



Gas Grill Ceramic Briquettes Replacement

This step-by-step guide will show you how to...

Written By: emma



INTRODUCTION

This step-by-step guide will show you how to replace gas grill ceramic briquettes. In this guide, we'll walk you through each stage of the replacement process, from preparing your grill for maintenance to safely installing the new ceramic briquettes.

During this guide make sure you read through carefully and complete the steps with caution. Make sure grill is not on and if it was recently used wait for it to cool down before proceeding with this guide.

This step-by-step guide is necessary if your ceramic briquettes are unusable.

The only tool you will need is in step 5, it will require you to use a Phillips head screwdriver.



TOOLS:

Phillips #0 Screwdriver (1)



PARTS:

Ceramic Briquettes (1)

Step 1 — Remove Grill Plate



- Carefully lift grill plate located above briquettes

⚠ Make sure the gas grill is off and the propane is turned off before removing the grill plate

Step 2 — Remove Ceramic Briquette Casing Panel



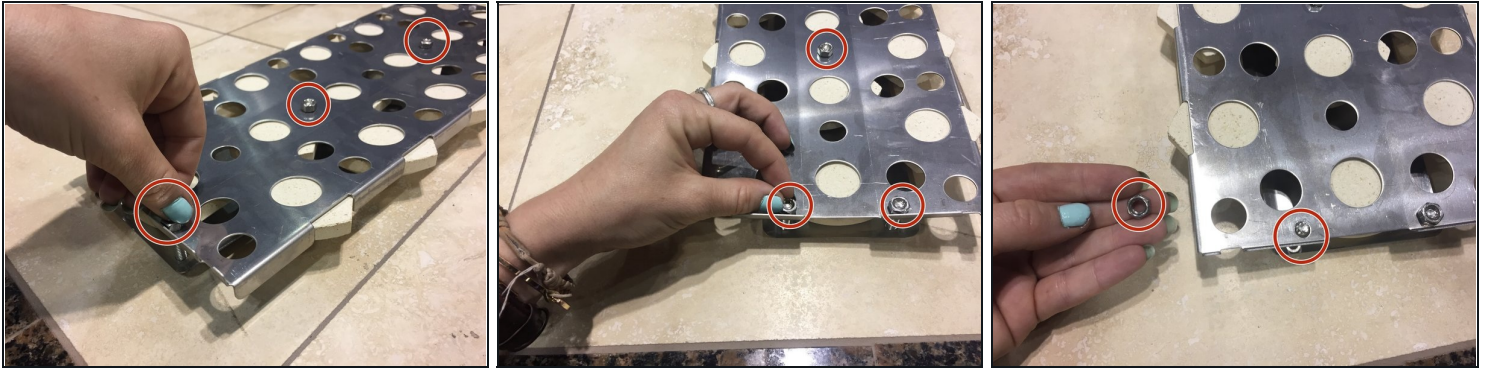
- Carefully remove entire ceramic briquette casing from above the stainless steel burner.

Step 3 — Unscrew Briquette Casing



- Locate the six screws located on top of the ceramic briquette casing and unscrew them using your phillips head screwdriver.
 - ① A small container is recommended to keep the screws together

Step 4 — Unscrew Washers



- Using your hands, gently unscrew washers from the back of the casing.
 - ① A small container is recommended to keep the washers together

Step 5 — Separate Two Pieces



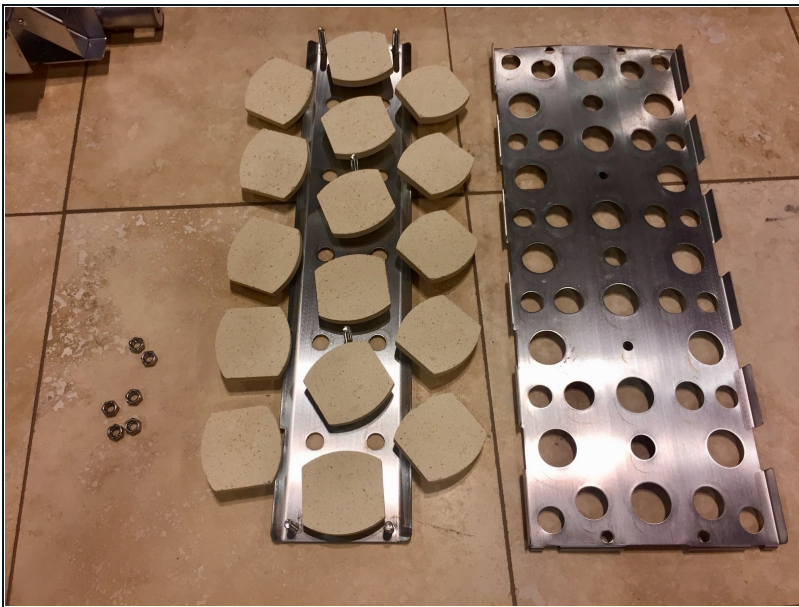
- Separate the front and back metal casings surrounding the briquettes.

Step 6 — Remove Old Briquettes



- Take out old and used briquettes and dispose of them. (They will probably be black and tarnished)

Step 7 — Replace With New Ones



- Take 16 new ceramic briquettes out and carefully align them inside the casing.
 - ① Be sure to pay attention to where you place them, as some should be straight and some diagonal for the casing to close back correctly.

To reassemble your device, follow these instructions in reverse order.