

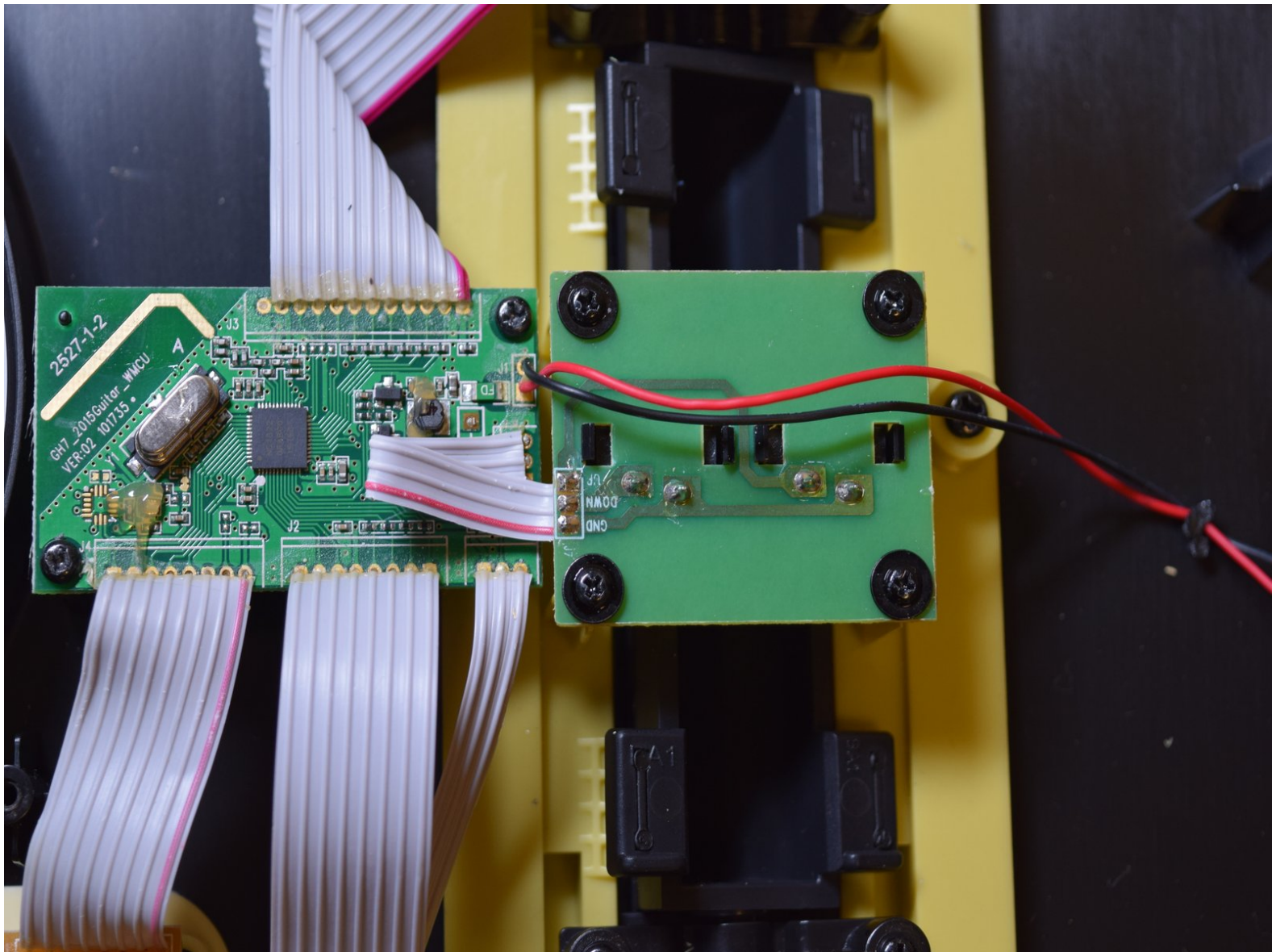


Activision Guitar Hero Live Guitar Controller

Motherboard Replacement

This guide will detail how to remove and replace the Motherboard on the Guitar Hero Live Guitar Controller.

Written By: Erik Wiseman



This document was generated on 2020-11-28 05:34:59 AM (MST).

INTRODUCTION

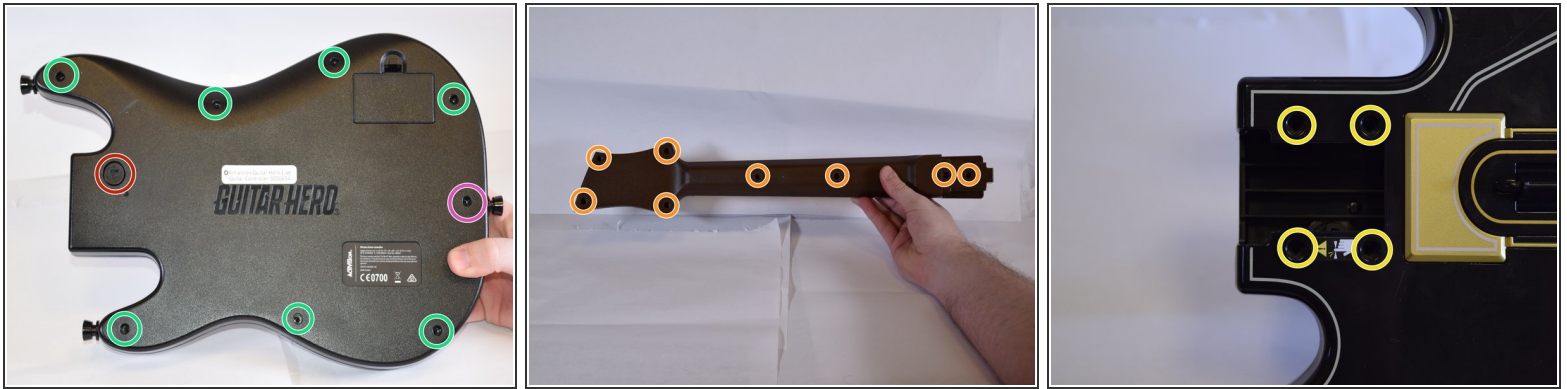
During this guide, we will be removing the component which controls all function of the Guitar Controller.



TOOLS:

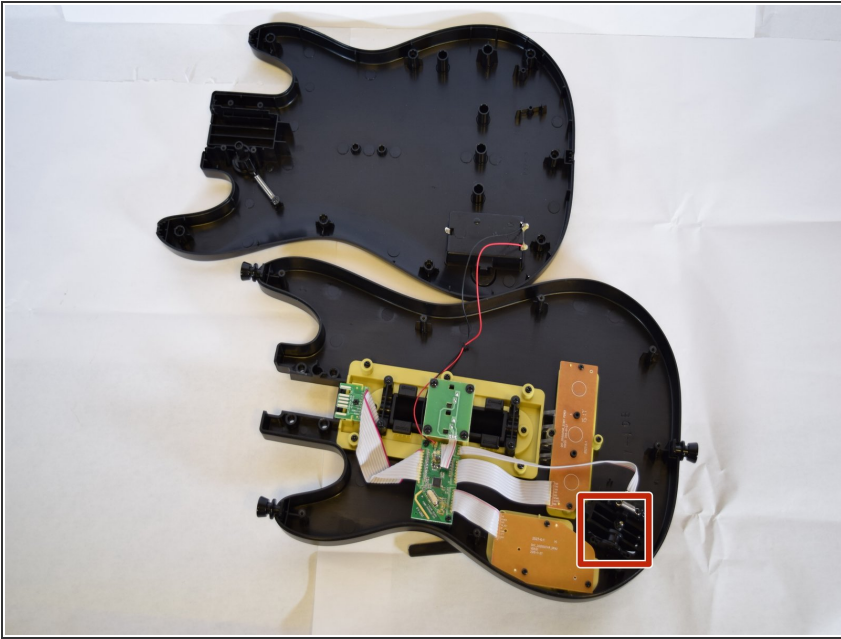
- [Phillips #00 Screwdriver](#) (1)
 - [.25" Flathead Screwdriver](#) (1)
 - [Phillips #0 Screwdriver](#) (1)
-

Step 1 — Casing



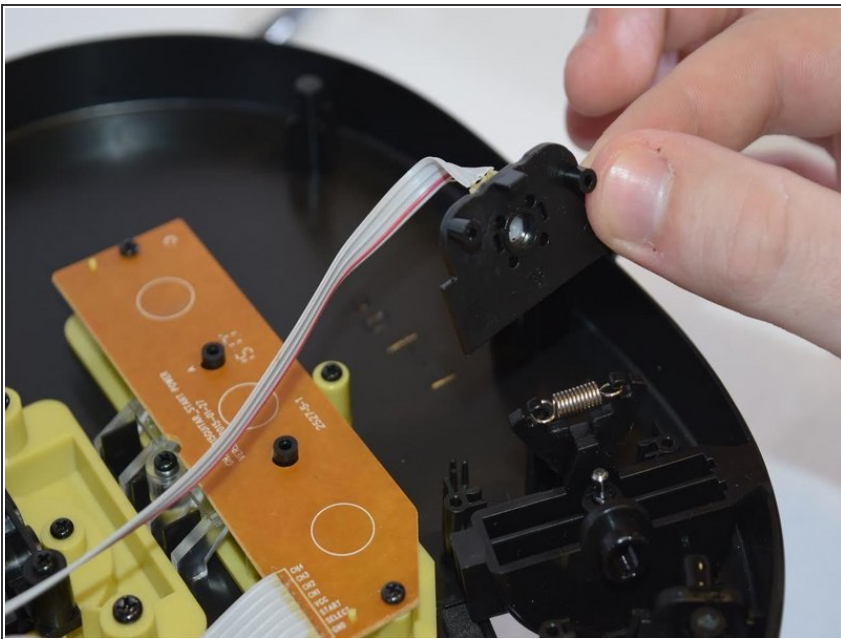
- The first thing we want to do is remove the neck from the body. This is necessary to access either the inside of the neck or the body.
 - The round tab with a triangle can be turned by inserting a .25" tip Flathead screwdriver and turning. Simultaneously, as the tab turns about a quarter circle, pull the neck and it should slide out with minimal force.
 - Once the neck has been separated from the body remove the eight screws from the back of the neck with a Phillips Head 0 screwdriver. All screws are 12 mm.
 - Next remove the four screws that were covered by the neck.
 - Finally, remove the eight screws from the back of the body.
 - This screw at the bottom of the body is a bit longer than the others.
 - With all the screws out, both the neck and the body shells should open with minimal force.
- ⚠ When separating the front and back half of the body do so carefully as the wiring from the battery pack to the components is fixed to each half with adhesive and can detach from any of the points if pulled to roughly.

Step 2



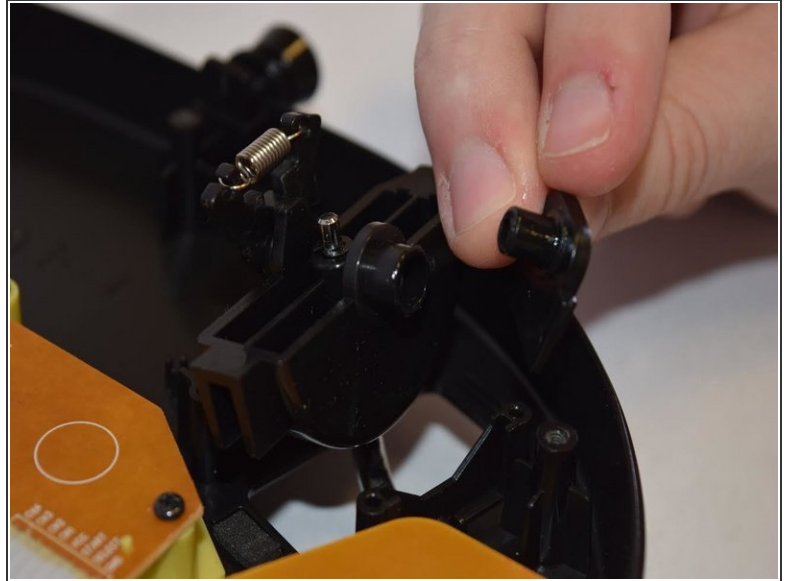
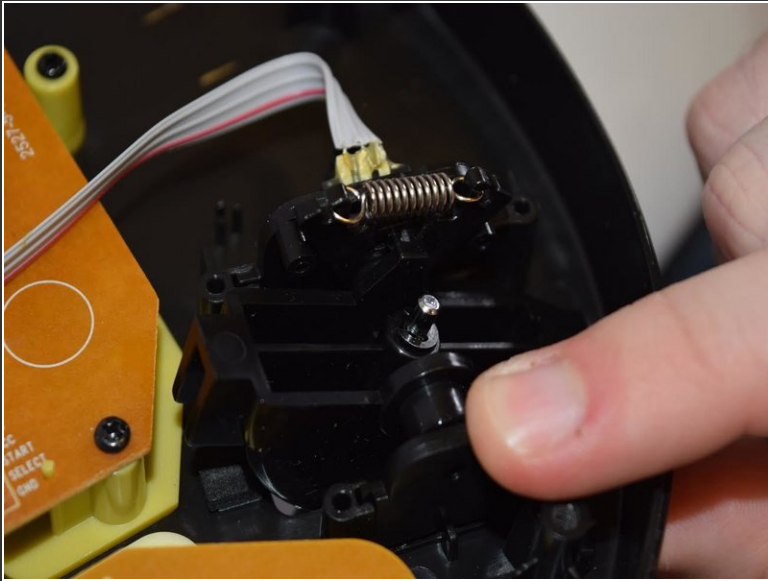
- These are the whammy bar components, we highly recommend removing these components before working on other areas of the body as the whammy bar protrudes making it difficult to rest on a flat surface.
- To remove the whammy bar, follow the steps included in the whammy bar replacement guide, found on our device.

Step 3 — Whammy Bar



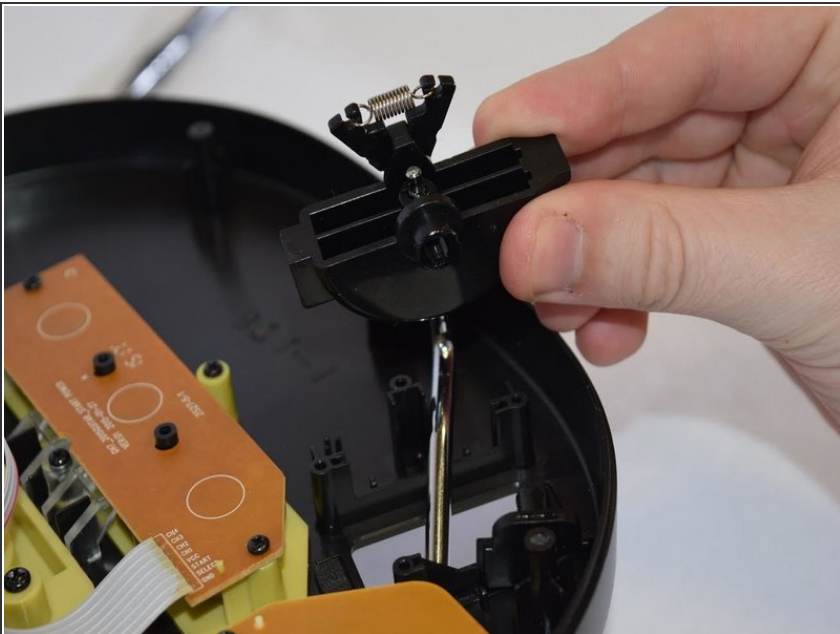
- After opening the controller carefully remove the piece of plastic connected to the strip of wire as shown in the photo.
- ⓘ After the piece of plastic which connects to the wire has been removed, set it aside where it won't be damaged.

Step 4



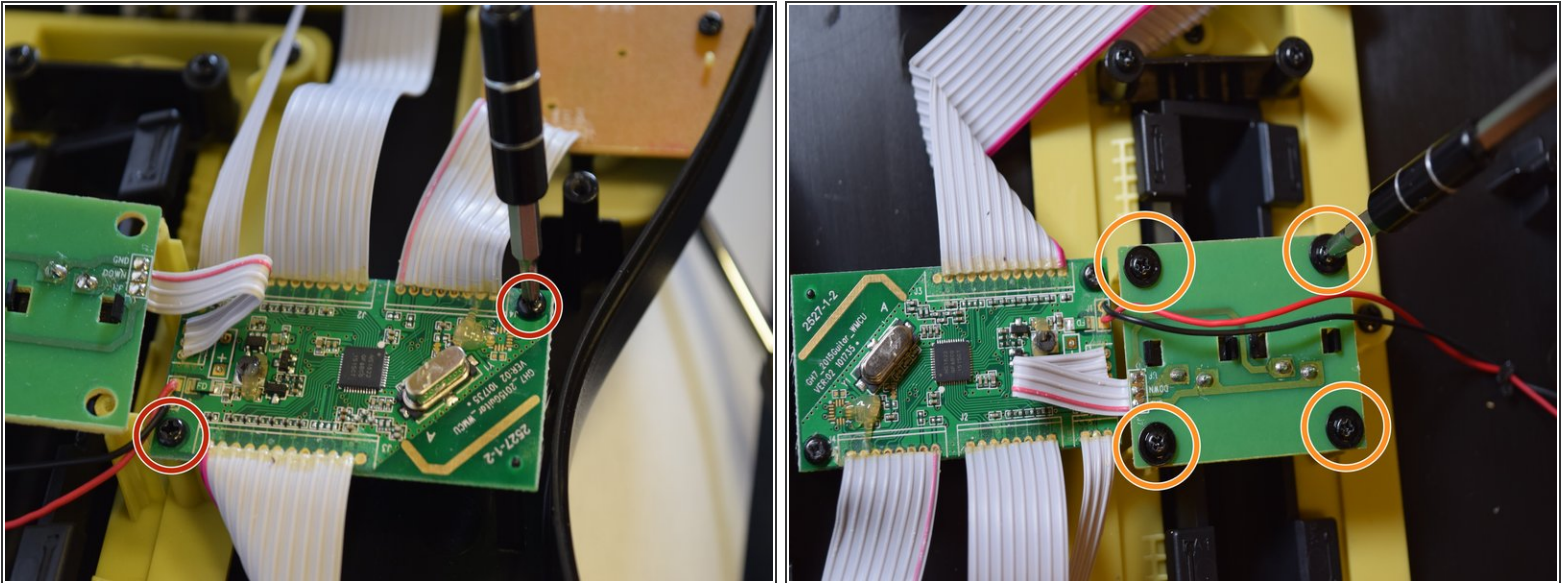
- Carefully remove the cylinder-shaped lid, by pulling outwards on the piece, it will slide out easily.
- ⓘ There should be a click when the piece has disconnected, then slowly slide part out and store safely.

Step 5



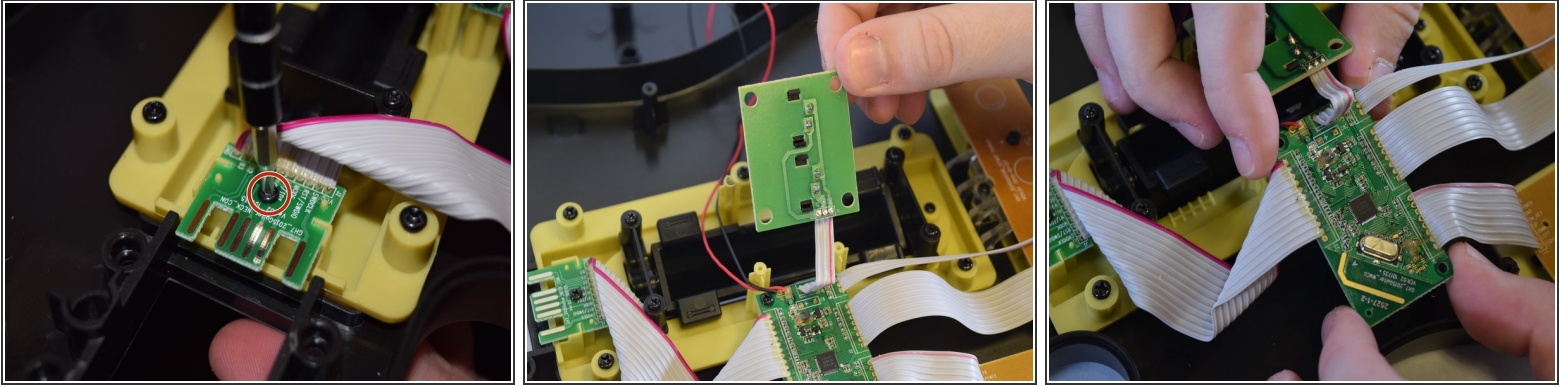
- Grab the Whammy Bar by the base of the component, and gently lift to remove the bar.
- ⓘ There won't be anything holding the Whammy Bar in place at this point, so if you feel any tension something may be caught on the Whammy Bar.

Step 6 — Motherboard



- First, identify the Motherboard, it will be the green panel which all five separate white wire wraps connect to.
- Once the Motherboard has been identified, begin unscrewing the Motherboard by using a Phillips Head 0 Screwdriver. There will be two 9 mm Phillips Head screws with, they are located on opposite corners.
- To completely remove the motherboard, you must also remove the panel located right next to the Motherboard. There are four additional 12 mm Phillips Head screws with flared edges which connect the separate panel to the Guitar Controller, here we will use the same Phillips Head 0 Screwdriver.

Step 7



- The last component you must remove to replace the Motherboard, is the Body-Neck adapter. This connector controls communication between the Guitar Keys and the body of the Guitar (Strum Bar, Whammy Bar, etc).
- To remove the Body-Neck adapter, simply unscrew the one 12 mm screw which holds it in place, using a Phillips Head 0 Screwdriver.
- Lastly, carefully lift all three components you have just unscrewed by the corners. The Motherboard will come off with little force.

To reassemble your device, follow these instructions in reverse order.