



HP Compaq LE2202X Monitor Power supply board Replacement

This guide will show how to replace the power supply board in the the HP LE2202X monitor.

Written By: Chayton





TOOLS:

- [Phillips #1 Screwdriver](#) (1)
 - [Phillips #2 Screwdriver](#) (1)
 - [Spudger](#) (1)
 - [Metal Spudger](#) (1)
-

Step 1 — Power supply board



- Orient the monitor screen down on a table. Be careful the work surface is not going to damage the screen when laying flat.
- Remove the 4 12 mm screws from the base using a PH2 bit and driver.
- Make sure to hold the screen at the bezel when the last stand screw is removed, gently lay the monitor flush with the table after the stand is removed.

Step 2



- With the monitor laying flush against a table remove the 12mm 1cm head screws using a PH1 bit.

Step 3



- Find the rectangular indentations in the front bezel. They are located to the right and left of the HP logo below the bezel.
- Using the plastic spudger insert it into the indentations and twist left and right like a screwdriver.
- ⓘ You should hear and physically see the separation of the front bezel and back case. If the above method does not work, use a metal spudger and more inward force.

Step 4



- Place the monitor screen down with the front bezel removed.
- ⚠ Hold the screen with the bezel when laying it flat because the screen is laying in the back case
- With the monitor laying flat lift up from where the stand originally was.

Step 5



- Peel back tape carefully, from all sides but not the top and where tape covers cables.
- Peel back aluminum tape carefully because it protects ribbon cable.

Step 6

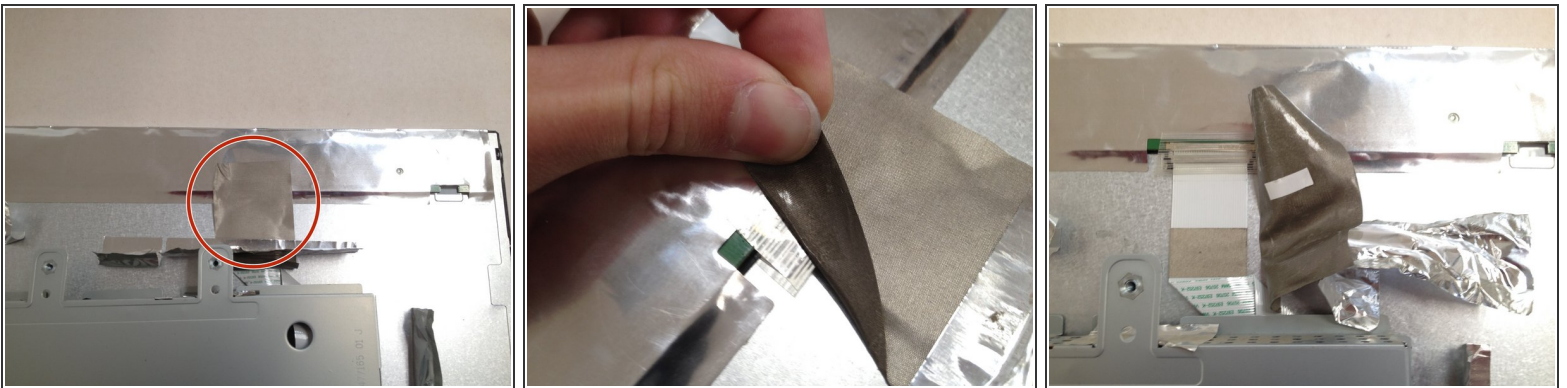


- Peel back tape from all visible cables.

⚠ Do not pull too hard on the tape as there is a possibility the cables or connector could be damaged.

- Remove the interface cable from the buttons by pulling away from you with the monitor power port facing you.
- Remove the back light power cable by pulling up

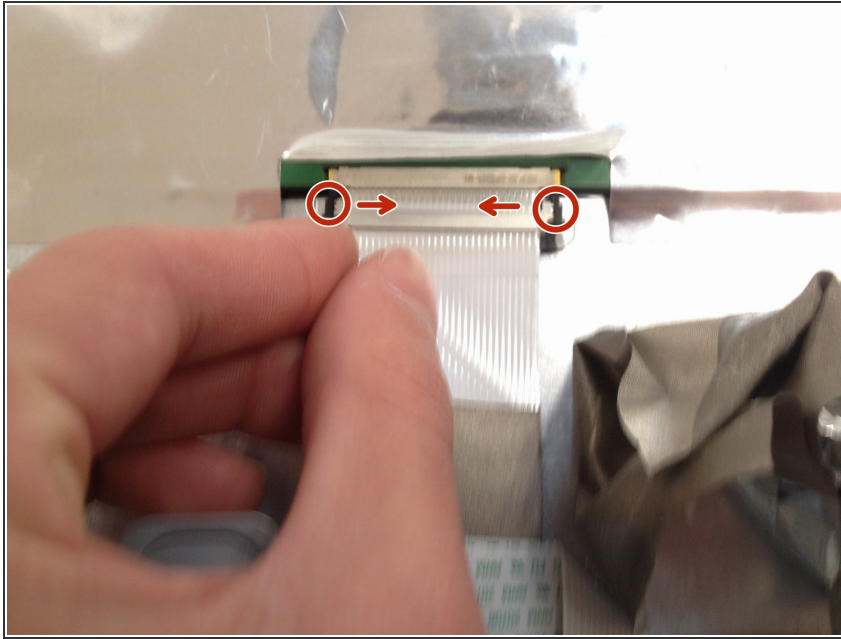
Step 7



- Locate the metal-cloth tape at the top of the monitor and slowly peel it back just enough to remove the ribbon cable connector.

⚠ Don't pull too hard on the tape as you may damage the ribbon cable connector.

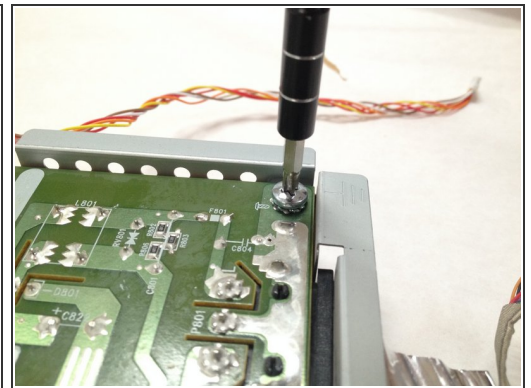
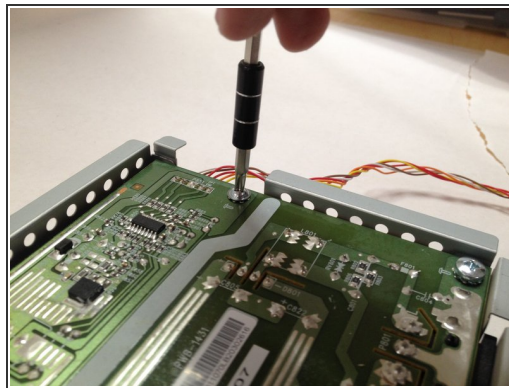
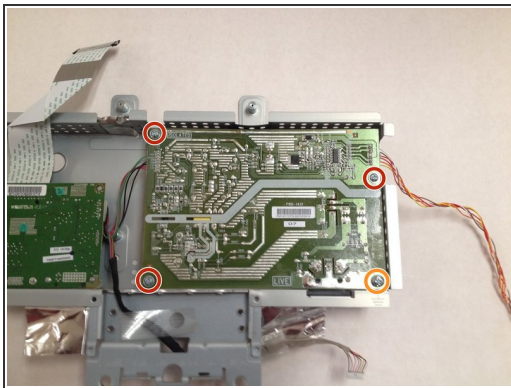
Step 8



- To remove the cable connector press in both levers towards the center.

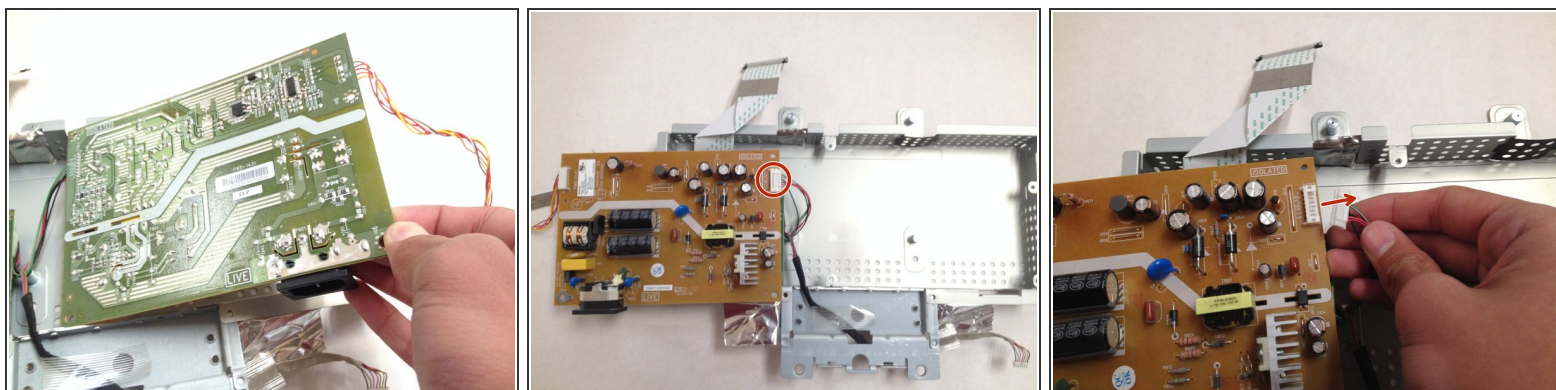
❗ If you are unable to press both at the same time, press one at a time and wiggle side to side until free.

Step 9



- With all tape and cables disconnected flip the case over to reveal the backs of the power supply and control boards.
- Remove the 3 10mm screws with a PH1 bit and driver.
- Remove the large grounding screw in the bottom left corner with a PH1 bit and driver.

Step 10



- Flip the power supply board over so the components are visible.

⚠ Mind the large capacitors in the middle of the board.

- Remove the cable connecting to the logic board and lift the power supply board away.

To reassemble your device, follow these instructions in reverse order.