



Canon PowerShot SD1000 Flash Unit Replacement

The Powershot SD1000 needs a new flash unit.

Written By: Phillip Phung



INTRODUCTION

If your Canon Powershot SD1000 has a broken or faulty flash unit, use this guide to remove and replace it.

A faulty flash unit may have a weak discharge, resulting in a dimly lit photo or failure to discharge entirely.

The flash unit of the Canon Powershot SD1000 is built into the main body of a camera, and will require disassembly of the main body.

Before using this guide, check the function settings of your camera to find what mode the flash is set to. Oftentimes, when set to "Auto," the flash will not discharge.



TOOLS:

- [Phillips #00 Screwdriver](#) (1)
 - [Spudger](#) (1)
-

Step 1 — Back Panel



- Remove the two 2.9 mm screws from the side panel closest to the camera lens.

Step 2



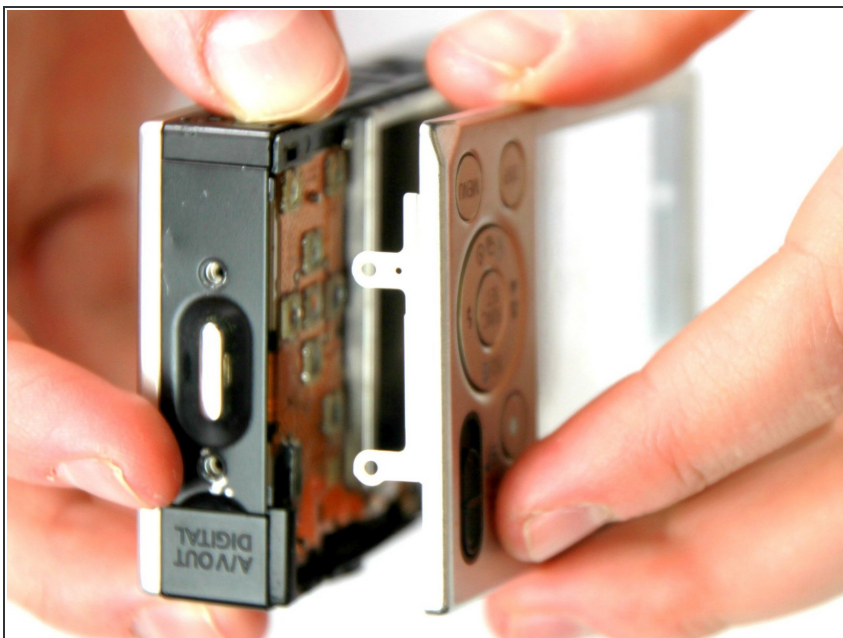
- Remove the two 2.9 mm screws from the camera bottom panel.

Step 3



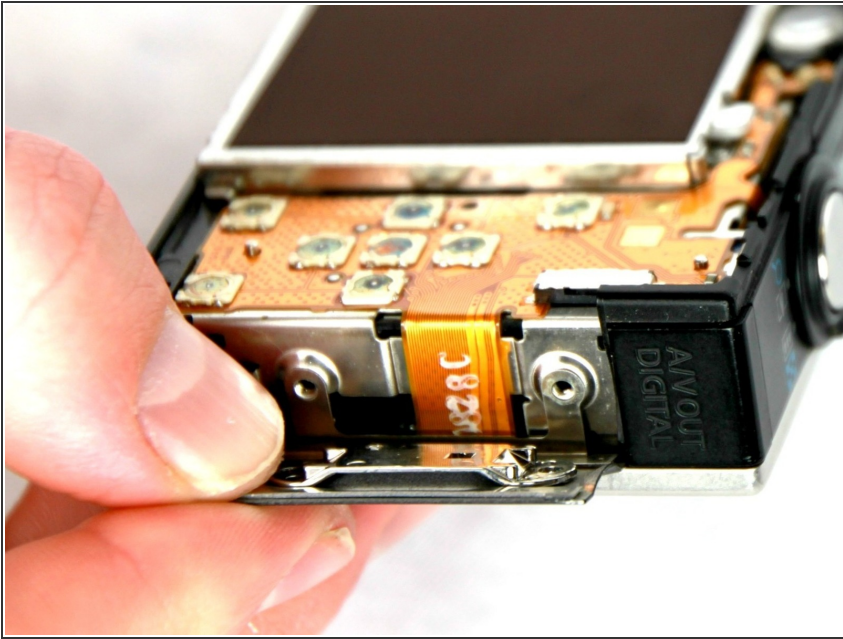
- Remove the two 2.9 mm screws from the side panel farthest from the lens.

Step 4



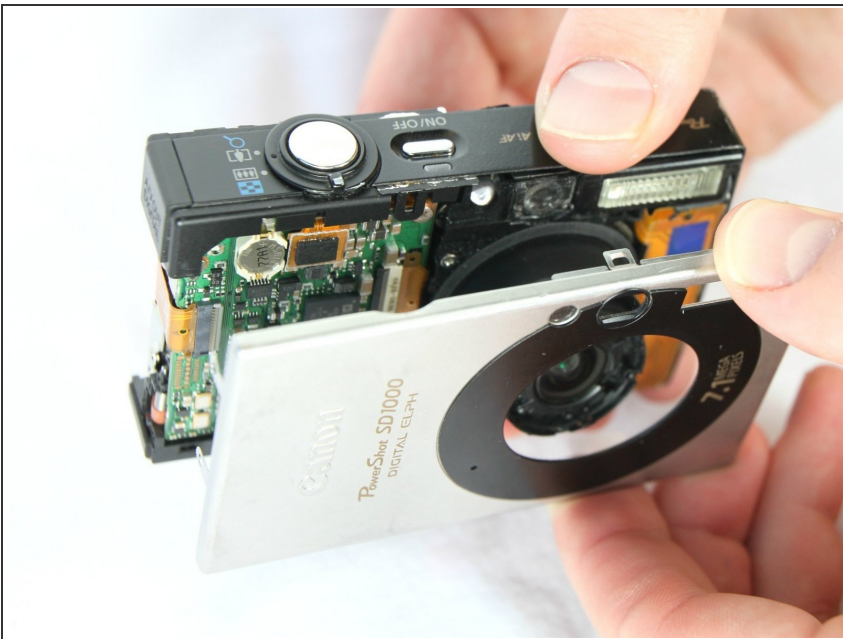
- Pull the back panel away from the camera body, starting at the end with the function buttons.

Step 5



- Remove the small cover panel and the attached wrist strap mount.

Step 6 — Front Case



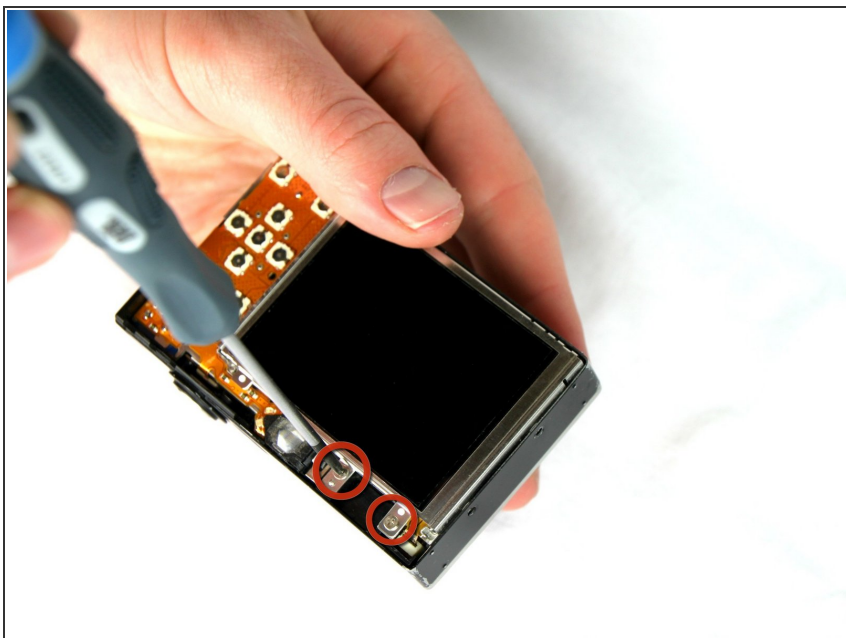
- Remove the front cover by gently pulling it away from the camera body.

Step 7



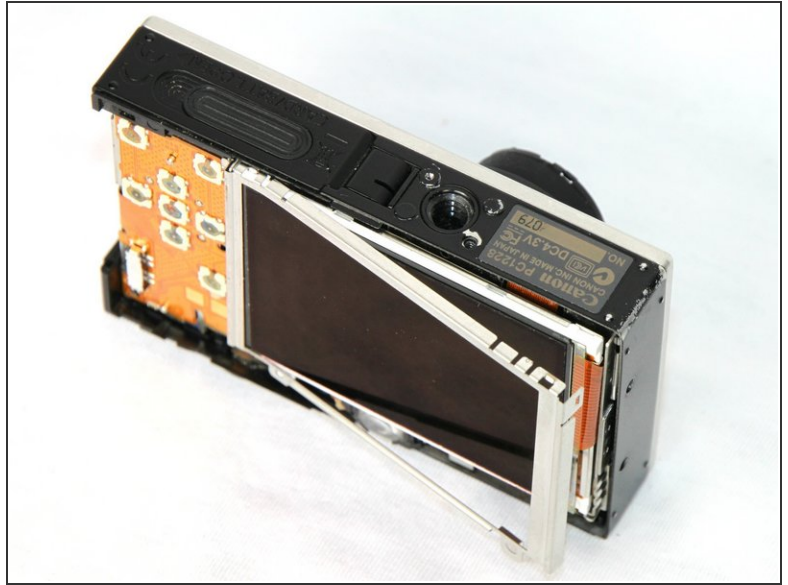
- Place the front cover, back cover, and wrist strap mount in a safe place until you are ready for reassembly.

Step 8 — LCD Screen



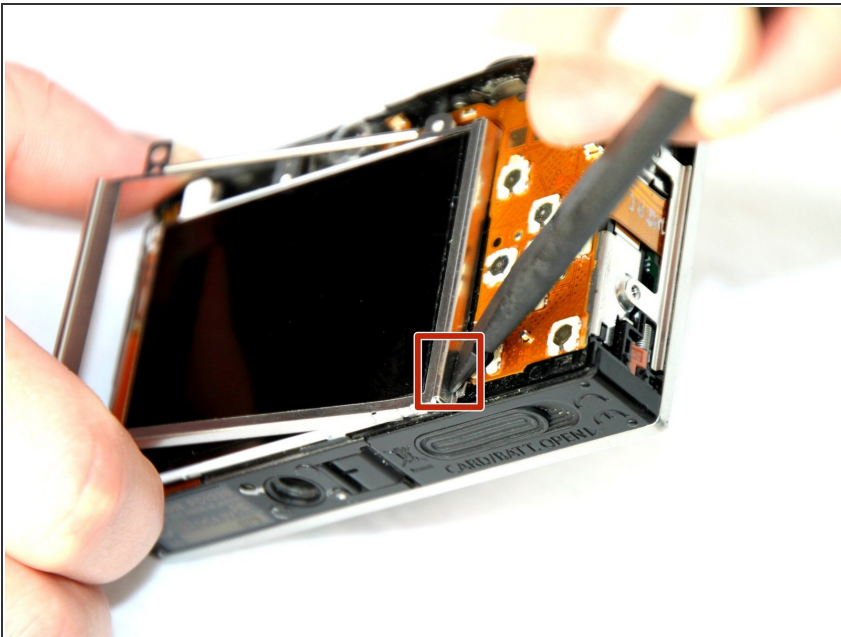
- Remove the two 2.4 mm screws located at the top of the LCD panel.

Step 9



- Pull up the metal frame surrounding the LCD screen starting at the side of the camera.

Step 10



- Push the metal frame away from the metal tab using the spudger to detach the frame.
- Rotate the metal frame upwards.
- ⓘ The metal framing should be attached by a metal tab towards the bottom of the camera, near the function buttons.

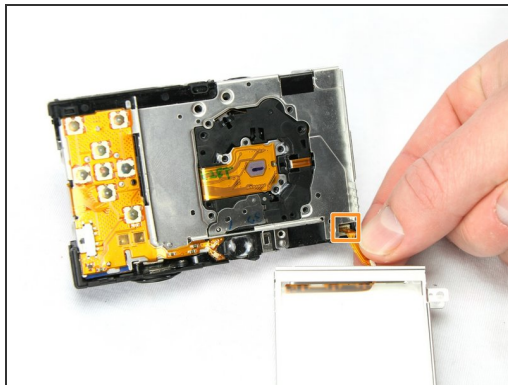
Step 11



- Carefully lift the metal frame from the camera.
- Remove the black LCD screen, leaving the thin lens pieces in place.

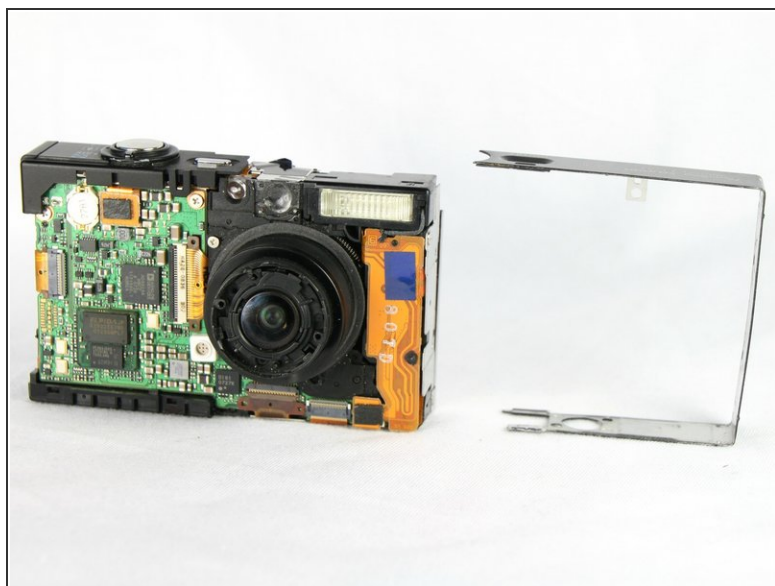
⚠ BE CAREFUL; both components are attached by an orange connector ribbon and cannot be removed yet.

Step 12



- Carefully pull on the orange connector ribbon to disconnect the LCD screen.
 - The LCD screen can be pulled out of the frame before disconnecting its connector ribbon.
- i** Tweezers are helpful to disconnect the ribbon.

Step 13 — Flash Unit



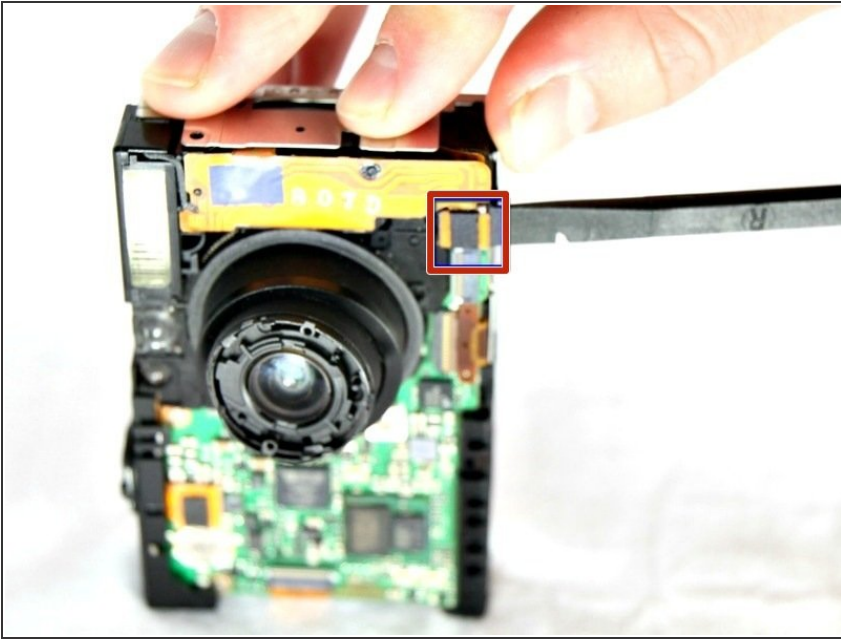
- Slide the metal frame off of the camera on the side that is closest to the flash mechanism.

Step 14



- Use a Phillips #00 screwdriver to remove the 2.4 mm screw that secures the flash assembly.

Step 15



- Use the spudger to gently and carefully disconnect the flash assembly ribbon from the black connector lock.

Step 16



- Pull the flash assembly forward out of the camera to remove it.

⚠ BE CAREFUL when handling the flash assembly. Touching the capacitor (the black cylinder attached to the flash assembly) could shock you.

To reassemble your device, follow these instructions in reverse order.