

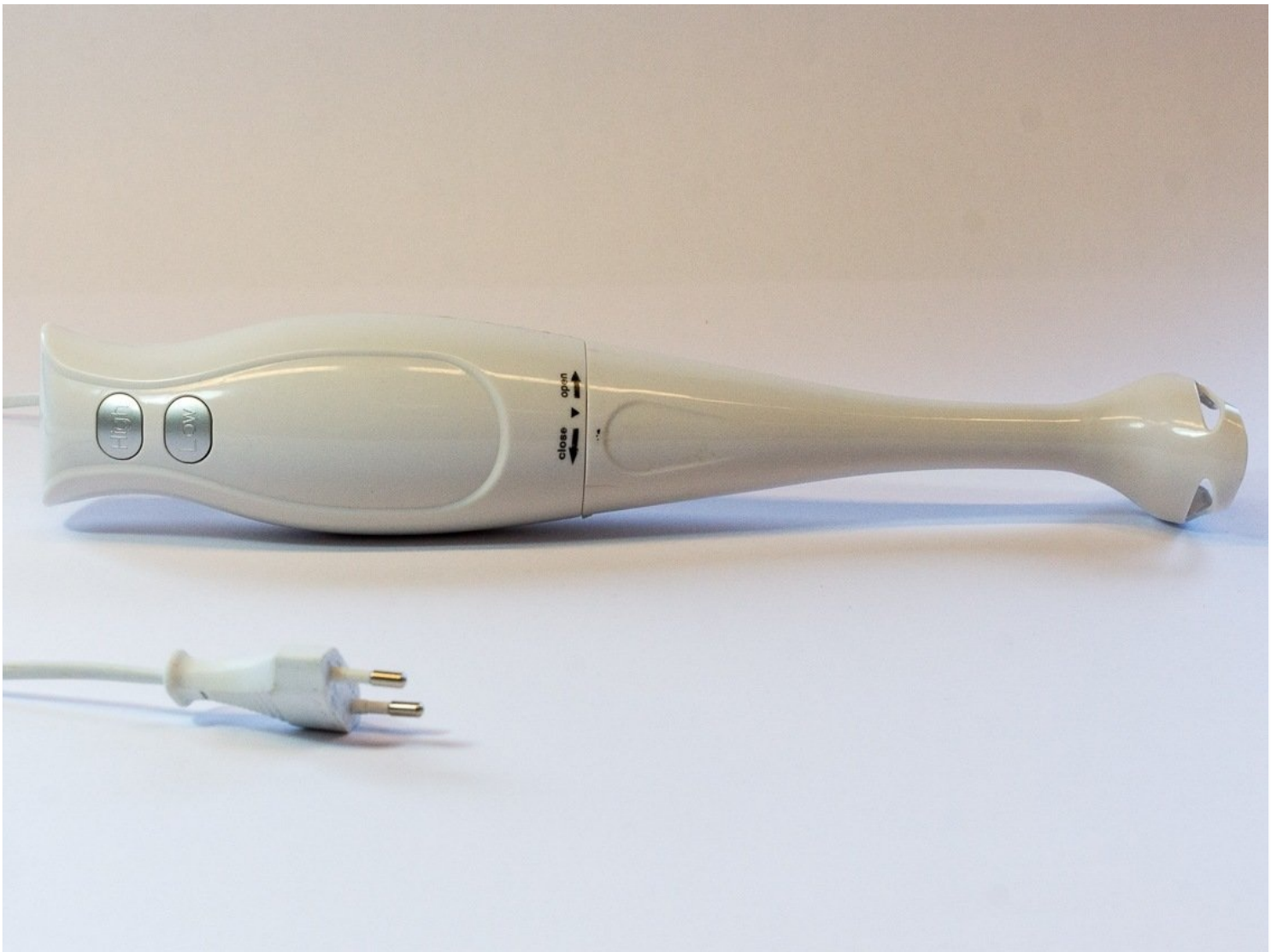


Gearchiveerd

Best Budget- Hand-held blender - high/low button replacement

Following this guide, you will learn how to...

Geschreven door: Diede van Malssen



INTRODUCTIE

Following this guide, you will learn how to dismantle this hand-held blender and how you can replace one or both the switches. You will have to solder and work precise to be able to fix the product.



GEREEDSCHAPPEN:

1: Single flat metal spudger (1)

<https://www.ifixit.com/Store/Tools/Metal-Spudger-Set/IF145-017-1>

2: Soldering station (1)

<https://nl.ifixit.com/Store/Tools/Soldering-Station/IF145-018-1>

3: Soldering wire (1)

4: Desoldering pump (1)

<https://www.conrad.nl/nl/toolcraft-zd-192-desoldeerpomp-antistatisch-588257.html>



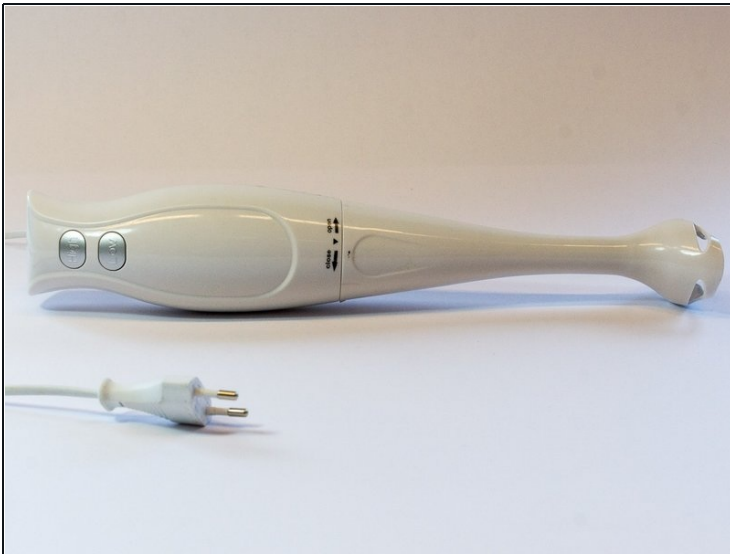
ONDERDELEN:

1 Replacement switch (1)

Jufond SW312

<https://www.china.cn/weidongkaiguan/3683166842.html>

Stap 1 — switch



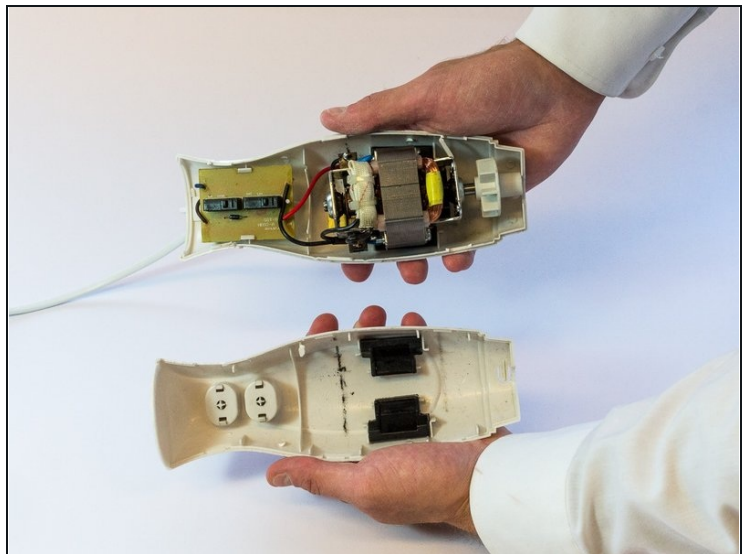
- Take out the lower part of the blender, by rotating it clockwise, as stated on the upper part.

Stap 2



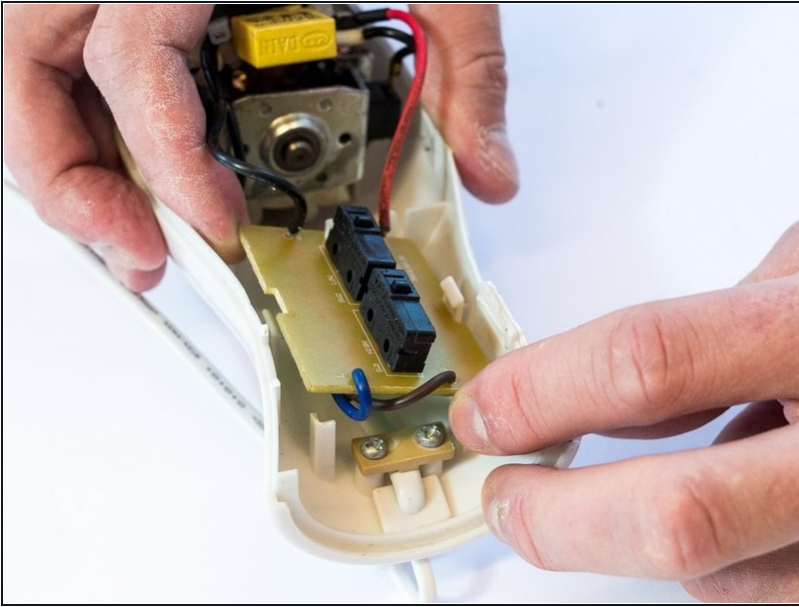
- Gently put the metal spudger (1) in the gap between the two shell parts and force a small gap, so that the parts loosen up.

Stap 3



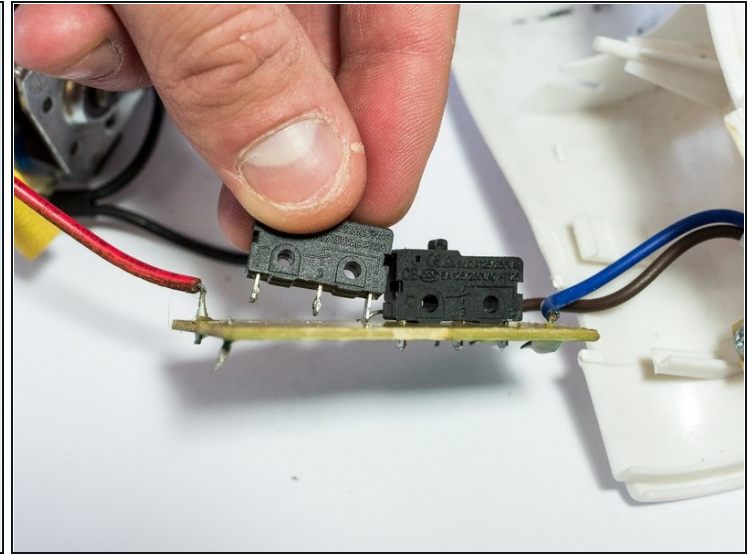
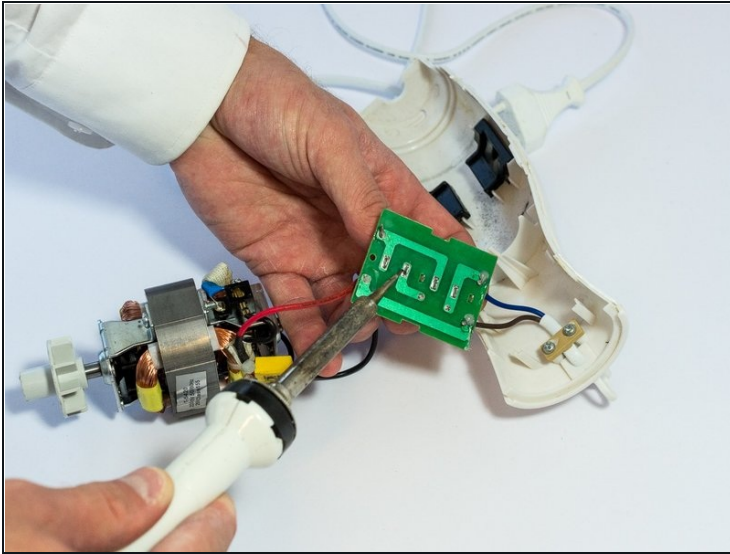
- Open up the click connections inside the shells by gently pushing the two shells together with the hand palms, right next to the gap.

Step 4



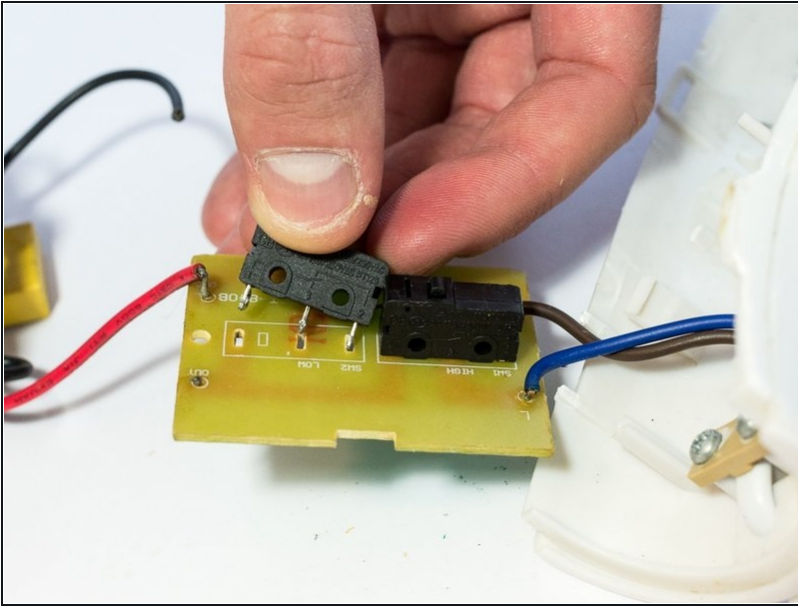
- Slide out the printboard by pushing it back and forth in the clicking connection with the shell.

Stap 5



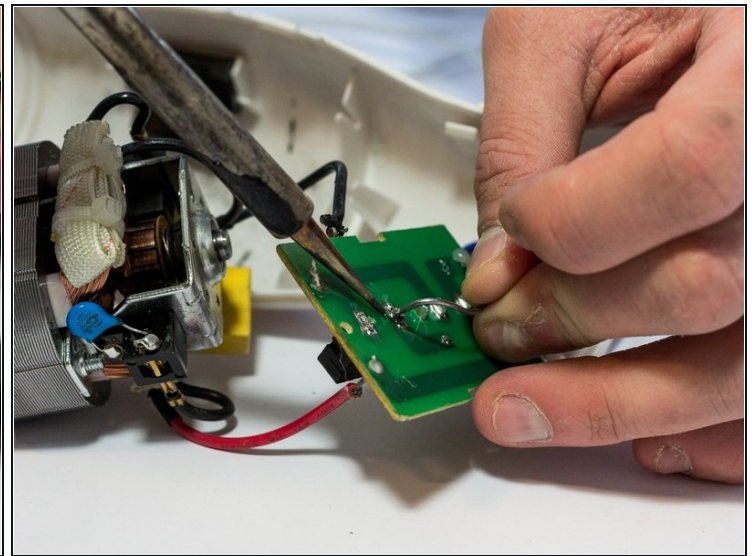
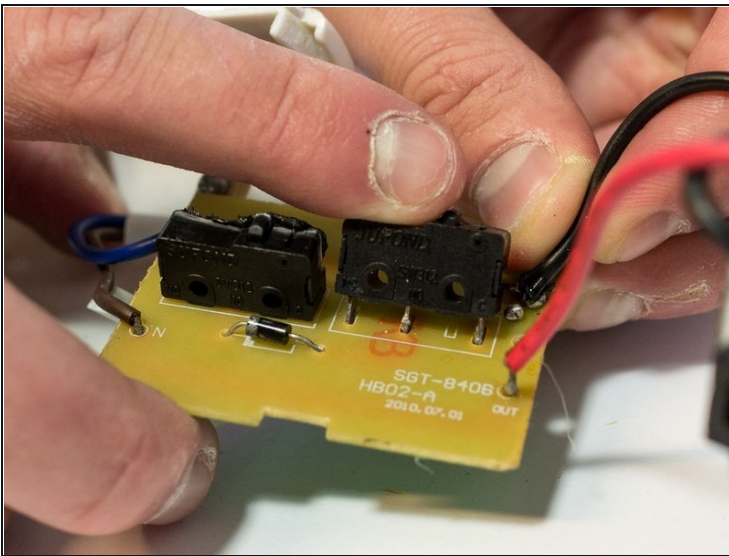
- Loosen the two soldering connections between the metal connectivity ends of the switch and the printboard by heating it with a soldering iron from the soldering station (2), at a temperature of around 380 degrees Celsius. Use a [desoldering pump](#) (4) to suck the soldering tin away. Gently pull the switch away till it disconnects.
- Take a look at this guide: [Hoe moet je \(de-\)solderen?](#)
- Watch out: the soldering iron is hot and may melt other parts in the product if you aren't careful.

Stap 6



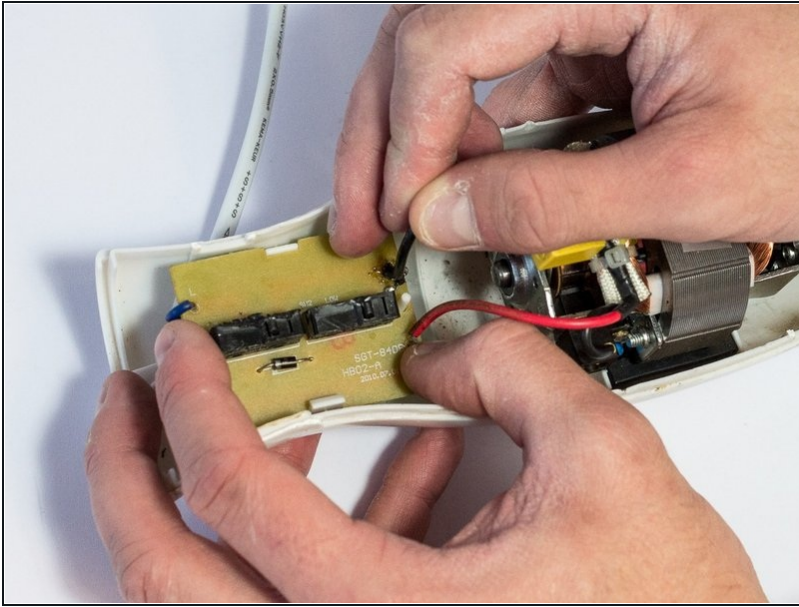
- Take the replacement switch (5).

Stap 7



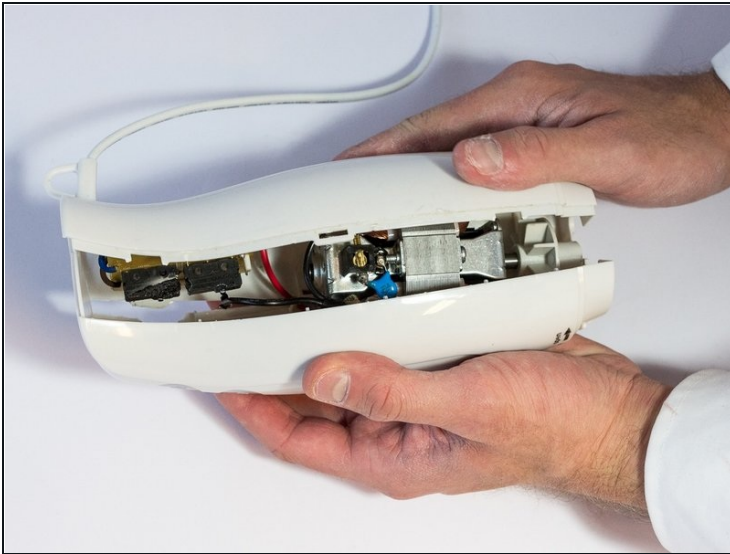
- Place the new switch in the empty holes of the printboard and use a soldering iron (2) and soldering wire (3) to reconnect the parts with the printboard. Make sure the connection is strong enough.
- Make sure the new switch is placed with the button in the right direction.

Step 8



- Put the printboard back into the clicking connection with the shell. Make sure the motor is at the right location as well.

Step 9



- Push the two shells together until you hear a 'click' and make sure the two shells are well connected.

Step 10



- Put the lower part of blender back at the two shells by rotating it counterclockwise, as stated on the upper part.

If you followed all the steps, you should be able to use the product again.