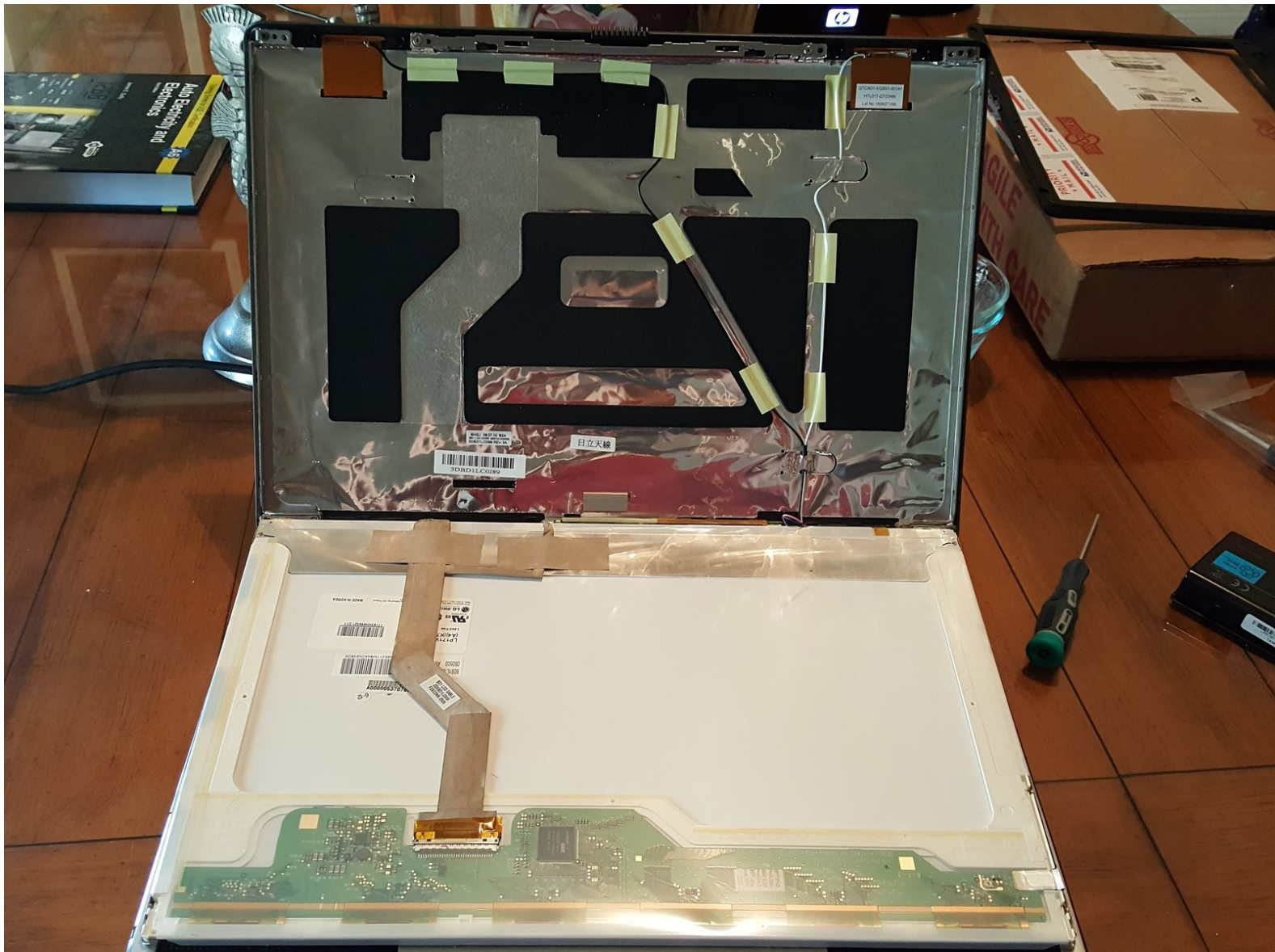




# Toshiba Satellite P105-S6024 LCD Display Replacement

Replacement of the LCD Display in the Toshiba Satellite P105-S6024

Written By: Jacob Micallef



## INTRODUCTION

A common problem with this particular model of the Toshiba Satellite is that the screen starts to go bad. The infamous solidly-colored lines start appearing over time and soon things become unreadable. In my case half the screen was unusable.

This repair requires a rather delicate hand. There are only 8 screws to remove, and a lot of tape and tiny connectors. I took about an hour to finish this repair, but I'm sure it can be done in at least half that time.



### TOOLS:

- [Phillips #00 Screwdriver](#) (1)



### PARTS:

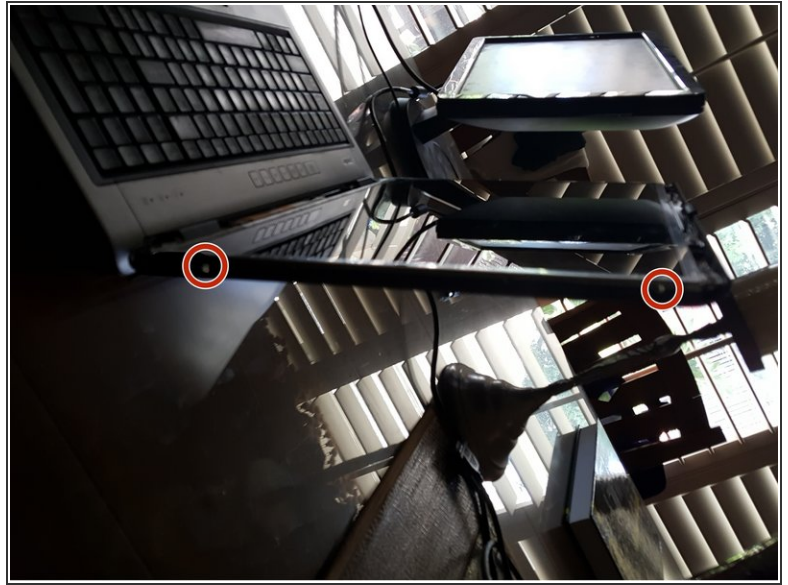
- [Toshiba Satellite P105-S6024 Display](#) (1)

## Step 1 — Accessing the Bezel



- Before you do anything, make sure the AC adapter is unplugged and the battery removed from the laptop.
- There will be 4 rubber grommets on the plastic bezel surrounding the screen, 2 square and 2 circular. You will have to pry these out or remove them somehow. They are small so set them aside where you will be able to find them later.
- ⓘ The grommets are held in their bores by adhesive. If upon reassembly they do not stick in their bores, attach a **small** amount of glue to keep them in.
- Directly behind the grommets will be 4 Phillips screws holding the bezel to the screen. These can be removed with a Phillips #00 screwdriver. As with the grommets, put these in a safe place where you can find them later.

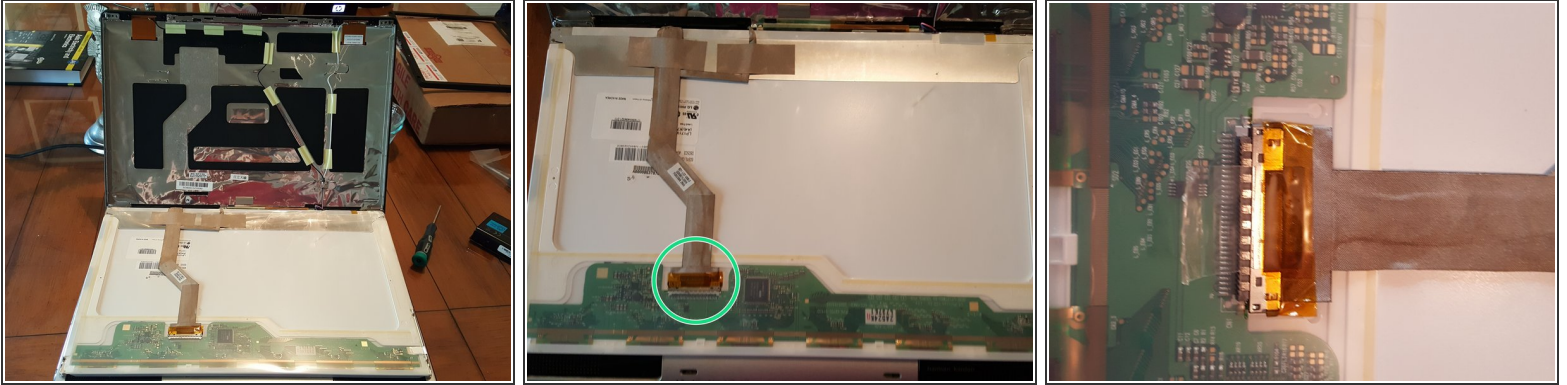
## Step 2 — Accessing the Display Assembly



- **GENTLY** pull the bezel off. I used a small flat-blade screwdriver out of a glasses repair kit to do this. First I gently pried the bezel corners to loosen them, then slowly worked my way around, carefully tugging and pulling the bezel out of the plastic locks.
- After you have the bezel off, there will be 4 Phillips screws on each side of the screen, near the edges (the picture shown here only shows 1 side). Again, use a Phillips #00 screwdriver to remove them.

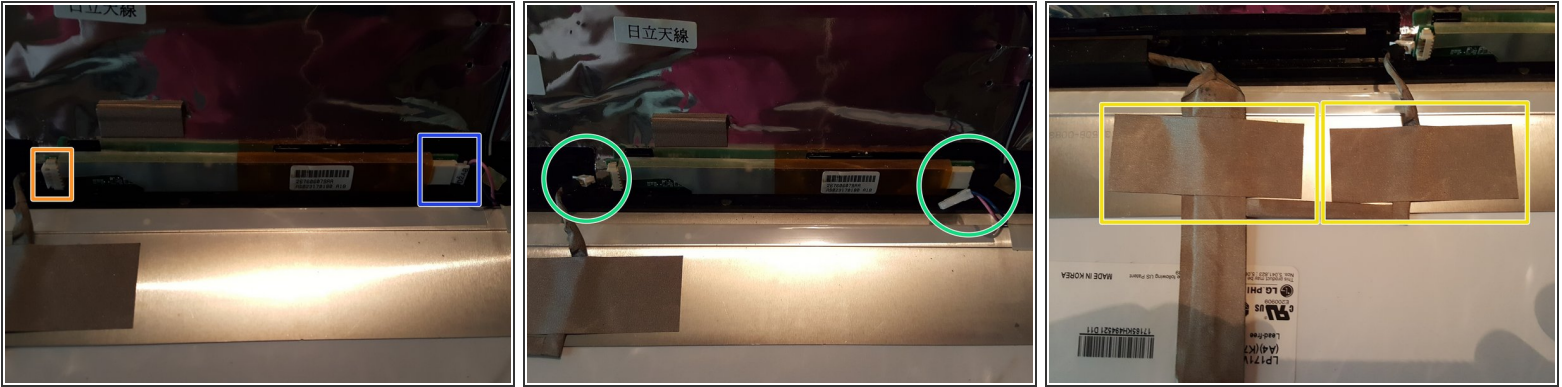


### Step 3 — Display Assembly Removal



- At this point, the screen assembly will be free to move. Gently pull it out and lay it on the keyboard.
  - ① You may wish to lay a cloth on the keyboard for increased protection of the screen and keyboard.
- Near the bottom-right of the screen will be a connector which is secured with clear tape. Remove the tape, pull the cable gently out of the connector and set it to the side.
  - ① You may find it helpful to fold the tape up (as shown in the third picture) so it doesn't stick anywhere else

## Step 4 — Disconnecting Display Cables



- At the top of the screen, near the center will be the inverter. On the left is the power cable and on the right is the backlight power source.
  - Power supply
  - Backlight power source
- Carefully pull the connectors out of the inverter. Do not pull on the wires, only the plastic connector. It may take a bit of maneuvering to get a solid grip on them.
- Holding the power supply and video cable in place are two strips of tape. Carefully peel them off, and then lift the cables up. The old screen can now be removed and the new screen installed.
- ❗ Upon reinstallation the cables must be taped down again. If the original tape no longer holds, you can use masking tape.

To reassemble your device, follow these instructions in reverse order.