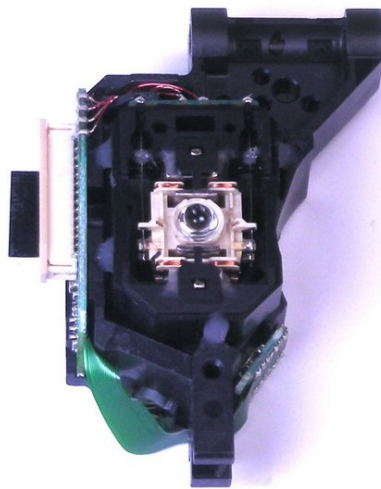




Sony DVP-FX730 Laser Replacement

The laser in your Sony DVP-FX730 sends the...

Written By: Oliver Woolsoncroft



INTRODUCTION

The laser in your Sony DVP-FX730 sends the DVD's data to the lens, so that it can be translated into audio and video signals. If the device is having difficulty reading the disc, first check that it's not due to a dirty or scratched disc. If the disc looks good, then the issue may be from a faulty or damaged laser. This guide offers step-by-step instructions for removing the laser, so that it can be replaced. All tools used in this guide are available from the IFIXIT website.

TOOLS:

Spudger (1)

T6 Torx Screwdriver (1)

Tweezers (1)

Phillips #0 Screwdriver (1)

Step 1 — Cover



- Remove the five exposed 7.9 mm screws using a Phillips screwdriver.
- Punch through the warranty sticker with the spudger.
- Remove the screw underneath with the Phillips screwdriver.

Step 2



- Remove the rubber feet using the spudger.
- Remove the screws that were covered by the rubber feet.

Step 3



- Hold on to the corners of the cover and gently lift the cover.

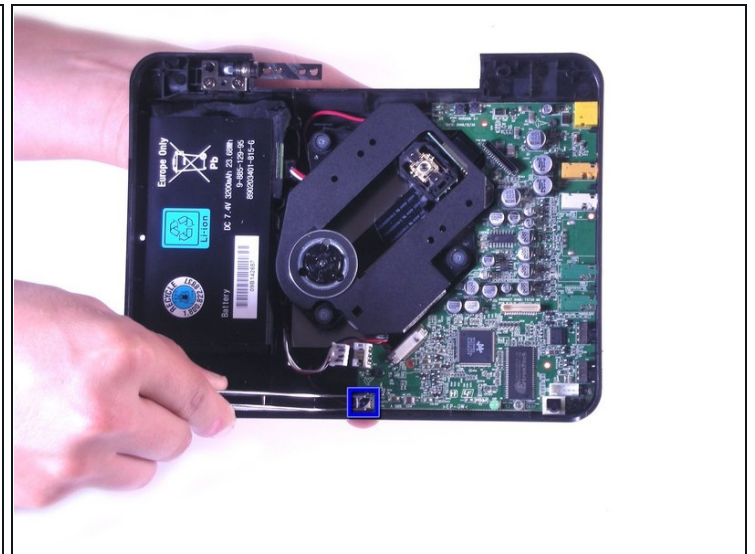
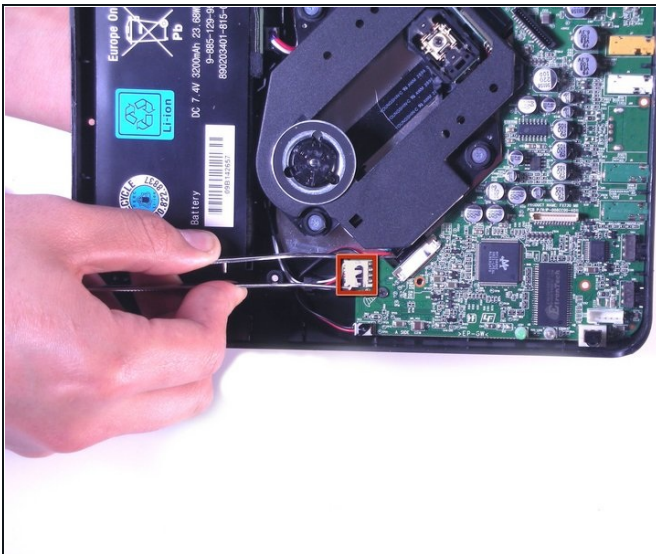
⚠ The tray is still connected to the base with wires.

Step 4



- Gently remove the wires with [tweezers](#) by pulling up on the base they are attached to.

Step 5 — Laser



- Remove the large connector.
- Remove the small connector.

Step 6



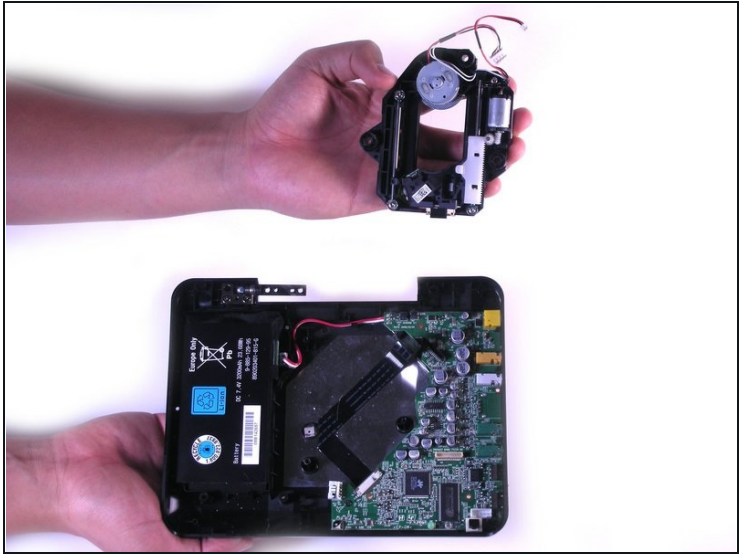
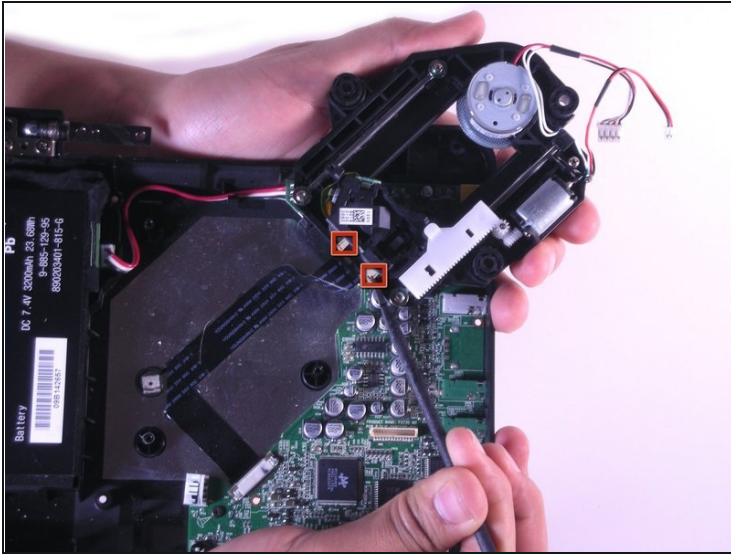
- Remove Philips screws with the #0 Philips Screwdriver.

Step 7



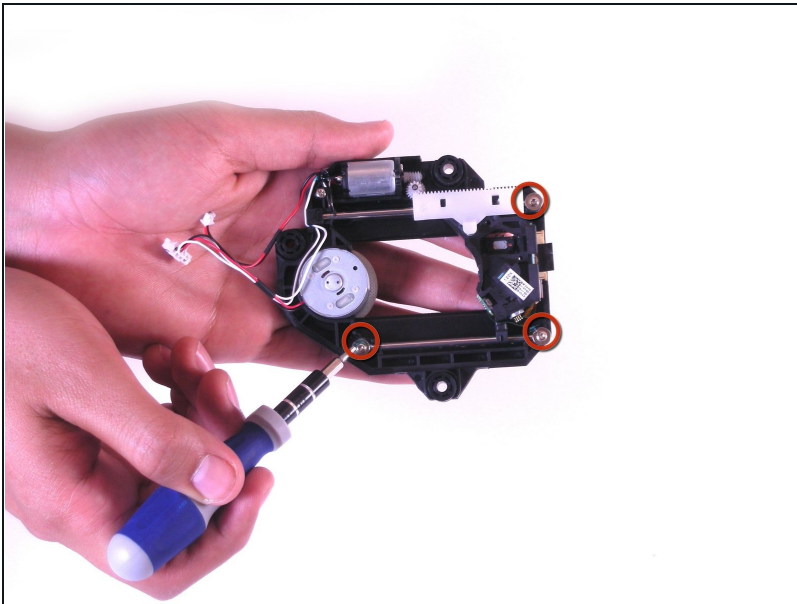
- Lift up the black piece connected to the wires.
- ⚠ Lift gently because the ribbon cable is attached to the bottom.

Step 8



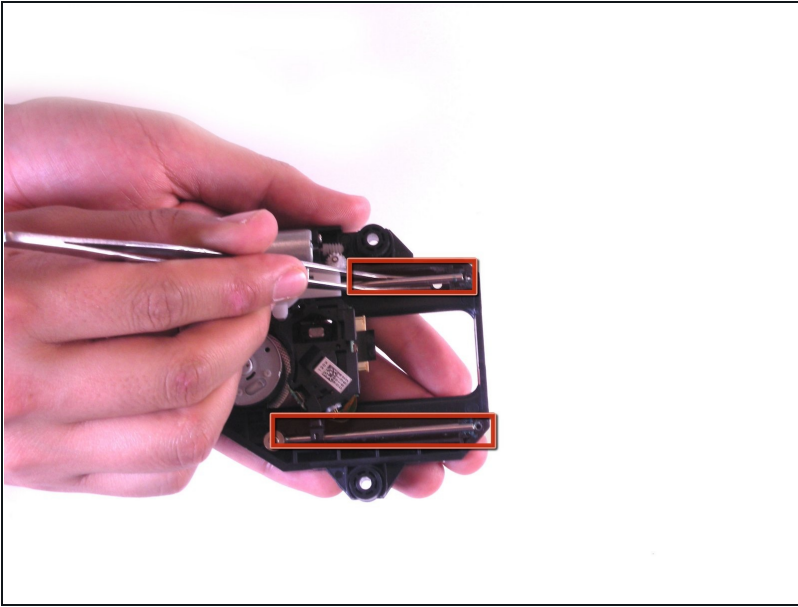
- Unlock the lock clip

Step 9



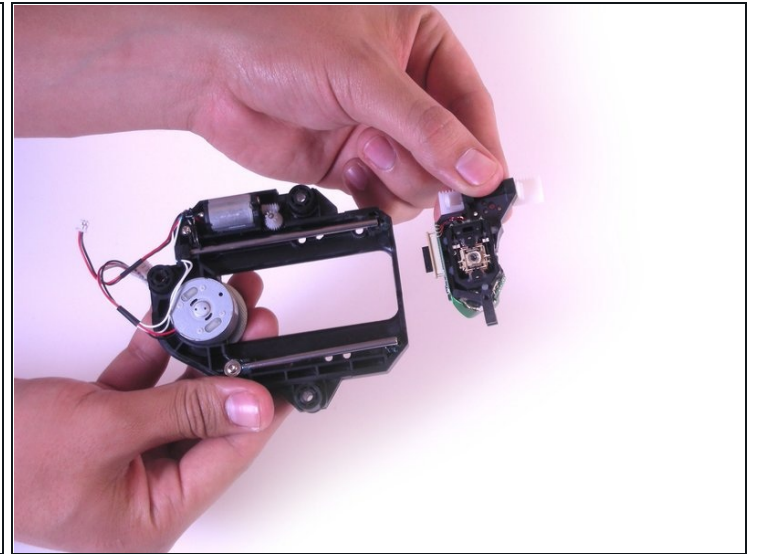
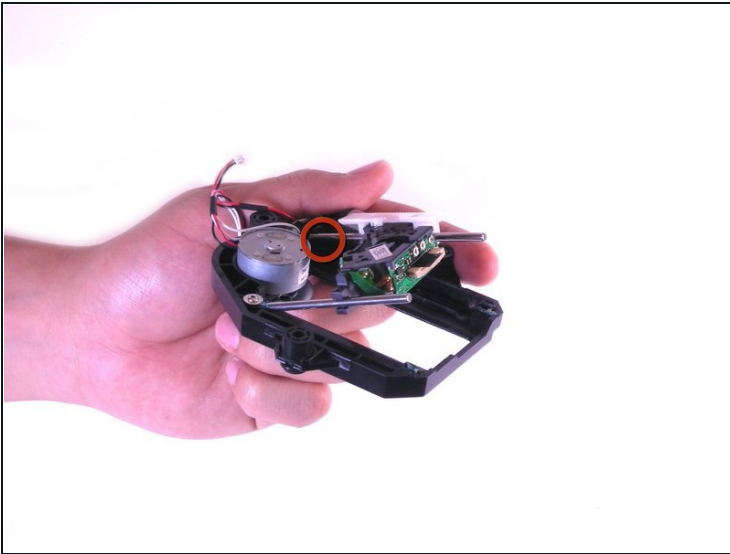
- Remove the T6 screws with the T6 screwdriver.

Step 10



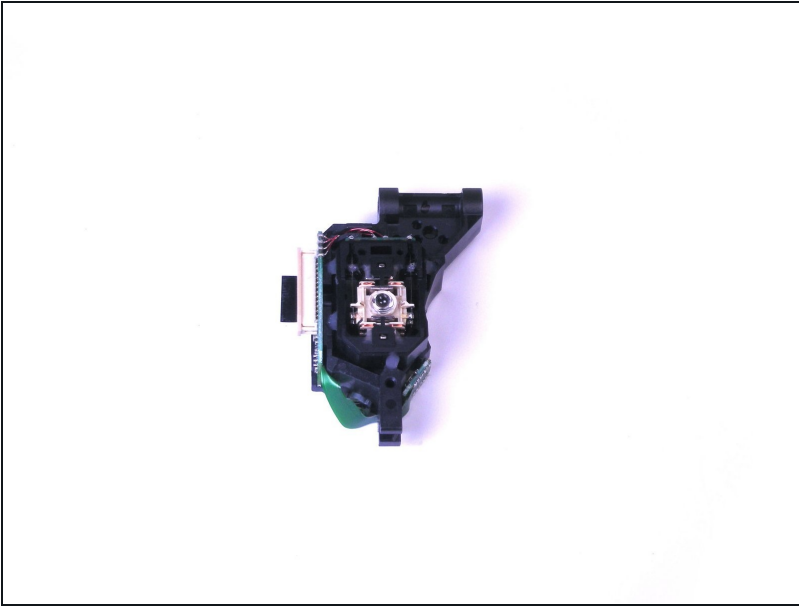
- Gently pull the rods out with [tweezers](#).
- ⓘ Be sure the laser is out of the way so that the rods can be removed.

Step 11



- Pull laser off of the rods.
- ⓘ Be careful when removing the rods because a fragile metal piece may break.

Step 12



- The laser is now removed.

To reassemble your device, follow these instructions in reverse order.