



Nikon COOLPIX S610c Rear Casing Replacement

This guide demonstrates the removal and installation of the exterior casing on the camera.

Written By: Kevin Backers



INTRODUCTION

If your rear casing needs to be replaced, if it's been cracked for example, follow this guide to remove the current rear case. In this guide ZxY denotes a screw with Z-length and Y-width.



TOOLS:

- [Phillips #00 Screwdriver](#) (1)
-

Step 1 — Battery



- On the bottom right of the camera, locate the battery flap switch.

Step 2



- Move this switch to the right so the battery flap can flip open.

Step 3



- Slide the orange switch to the right as shown. Now the battery can be pulled out. Reverse these steps to re-install.

Step 4 — Rear Casing



- Remove the three 3x3mm screws attached to the rear casing.

Step 5



- ❗ The panel can be identified by the wifi logo on its upper half on the camera's side.
- Remove the 5x3mm screw holding down the panel on the side closest to the lens.

Step 6



- Pry the panel off from the bottom using your fingernail.

Step 7



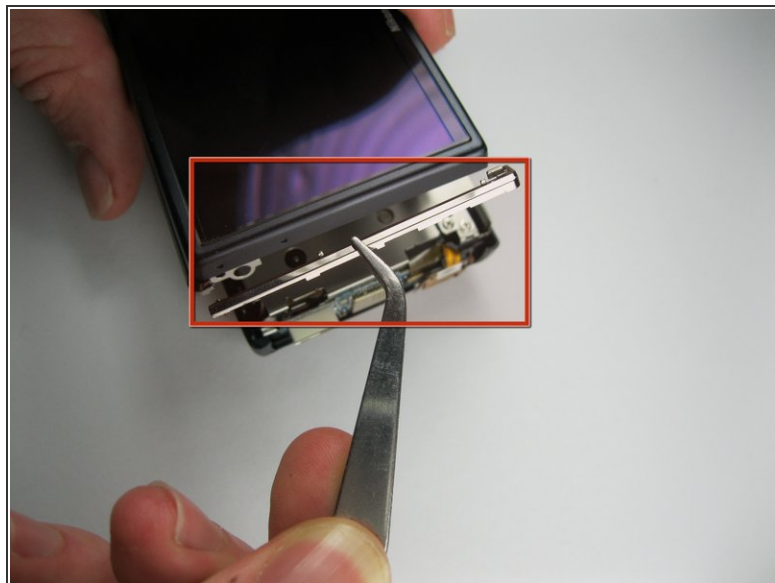
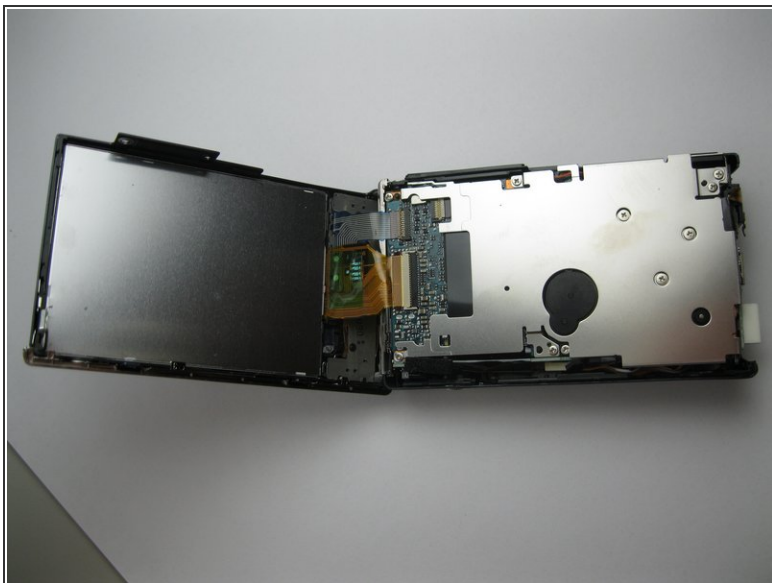
- Remove the 3x2mm screw underneath the panel near the top of the camera.

Step 8



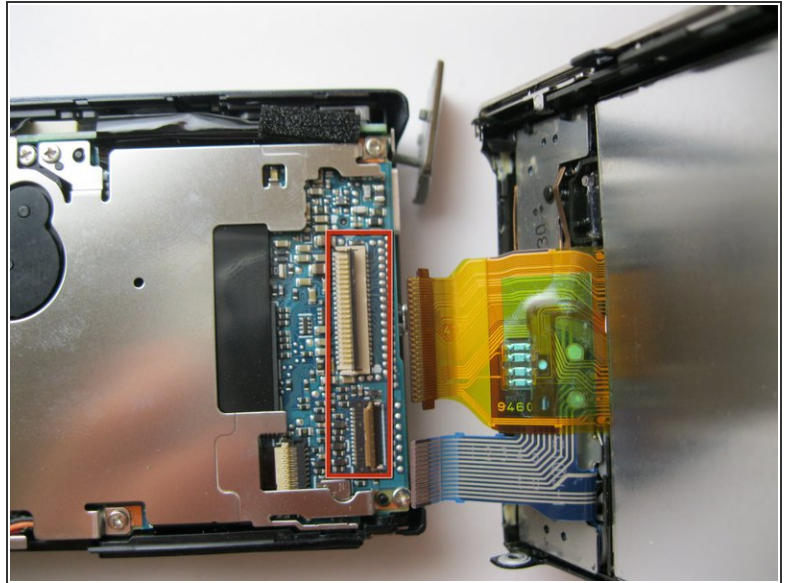
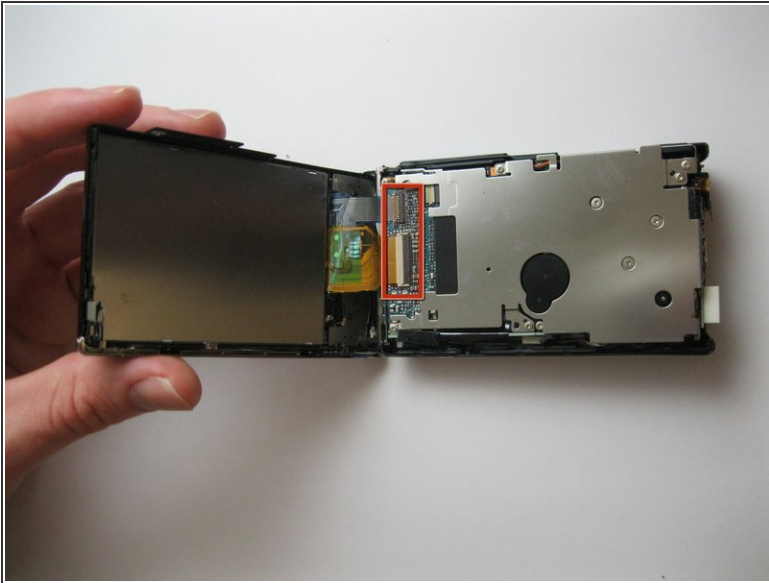
- Remove the 4x3mm on the opposite side near the selector wheel.
- Remove the 2x2mm and 3x2mm screws underneath the a/v flap.

Step 9



- Pry the back panel away from the body of the camera, using the space you just opened up.
- ⚠ Be careful not to damage the ribbon cable on the opposite end of the camera.
- A small piece of the frame of the camera may fall off, but it can be easily put back into place during reassembly.

Step 10



- Pry up the plastic ribbon connectors on the body of the camera to release the ribbon cables.
- ⓘ The center connector is detached by flipping the black latch up and away from the center of the camera.
- ⓘ The smaller connector is detached by flipping the tan latch up and away from the edge of the camera.

To reassemble your device, follow these instructions in reverse order.