



Disassembling Sigma 24-70mm F2.8 EX DG Macro Lens Zoom bearing

How to reach a part which makes the lens zoom.

Written By: Rimvydas



INTRODUCTION

Autofocus bearings were stuck, I could only focus between 0 to 0.5m.

This guide will roughly show you how to reach a part which moves the lens and makes it to zoom and focus.

TOOLS:

- [Phillips Screwdriver](#) (1)
-

Step 1 — Disassembling Sigma 24-70mm F2.8 EX DG Macro Lens Zoom bearing



⚠ Camera lens are delicate and intricate. Be careful with the disassembly and work slowly.

- Take the lens away from camera

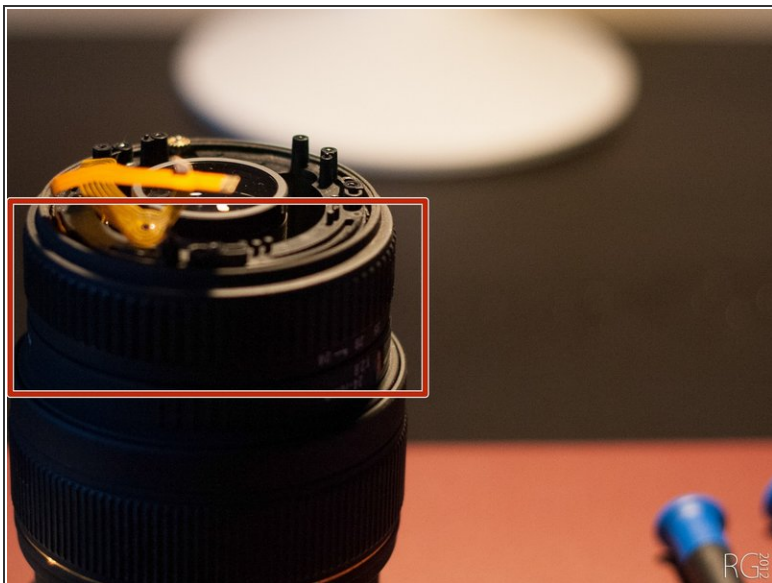
ⓘ DO NOT FORGET: THAT YOU ARE DOING ALL ON YOUR OWN RESPONSIBILITY

Step 2



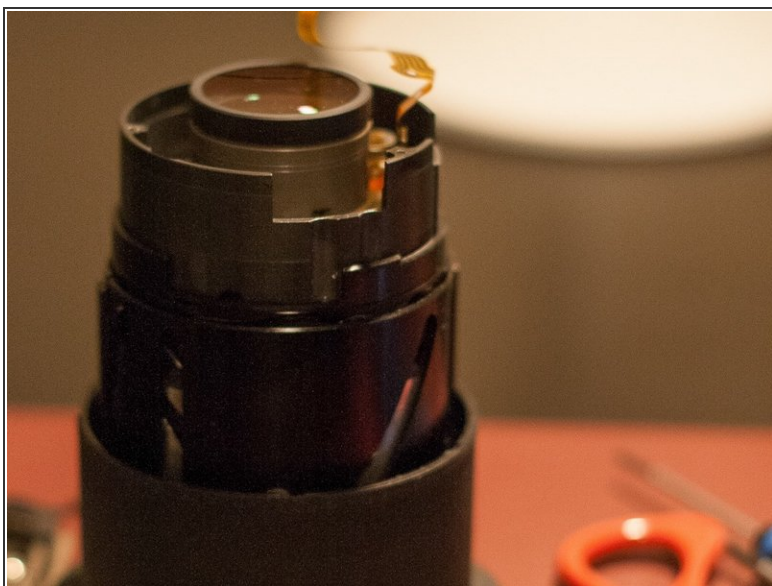
- Unscrew the top part and detach it.
- Unjoin cables. Be careful; they're delicate, and easily torn.
 - ⓘ Try to avoid touching sensitive electronic components.
- Unfasten the screws that hold the circuit board in place, and separate it from the rest of the lens assembly.

Step 3



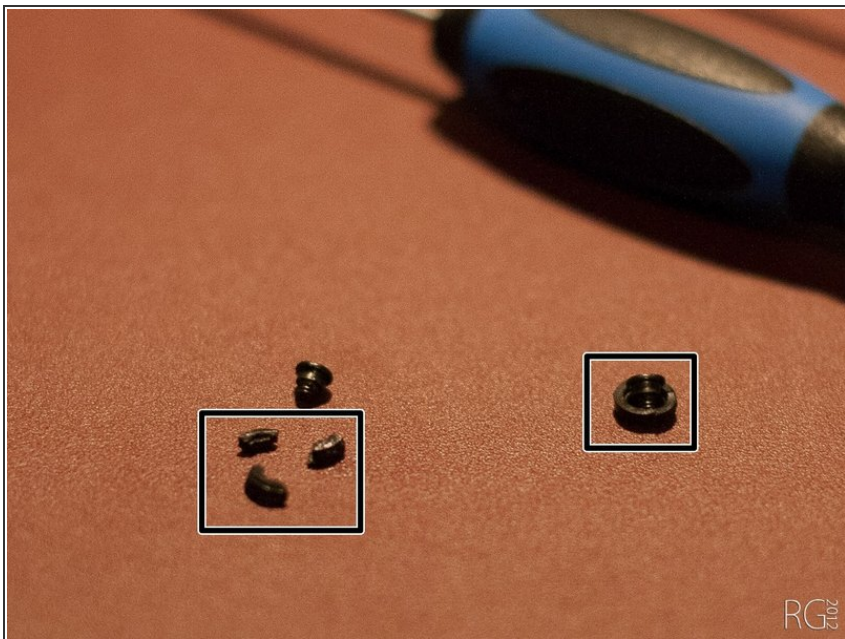
- Take away zoom rubber and you will find screws

Step 4



- Keep unscrewing and removing the parts until you reach what you need to fix.
- Zoom bearing can be taken away by unscrewing its screws.

Step 5



- Here is one of the parts which was broken, so I go to camera repair shop, and bought that parts. As this was not the only part broken, I had to leave for additional repair.
- When you finish you can put all back together

To reassemble your device, follow these instructions in reverse order.