



# Blackberry Bold 9650 Keypad Replacement

Written By: Ryan





## TOOLS:

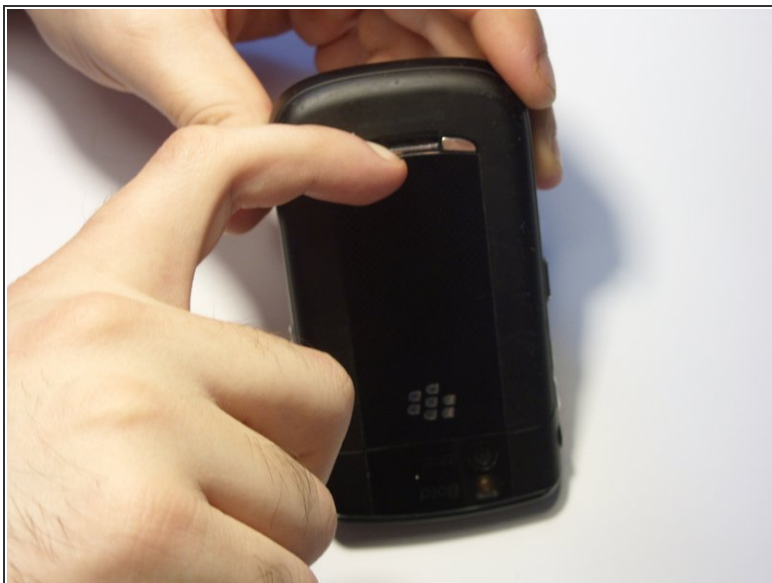
- [Tweezers](#) (1)
- [T6 Torx Screwdriver](#) (1)
- [iFixit Opening Tool](#) (1)



## PARTS:

- [Blackberry Bold 9650 Keypad](#) (1)

## Step 1 — Battery



- Turn the device upside down.
- Using your finger, slide the silver cover release button towards the top of the device.
- Lift and remove the back cover.

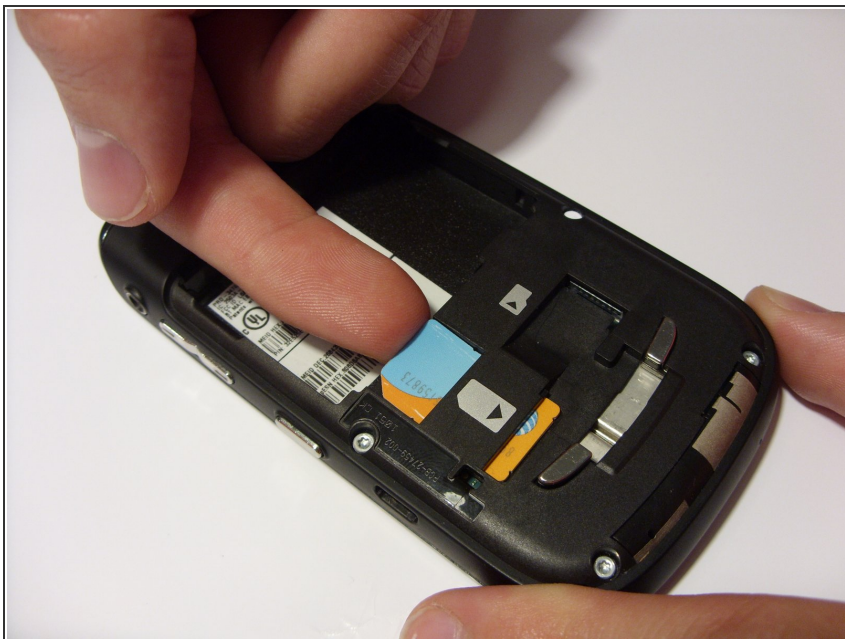
## Step 2



- Using your fingernails, lift the sides of the battery.
- Remove the battery.



### Step 3 — SIM Card



- Orient the device so that the screen is facing the ground.
- Using your finger, gently lift the top of the SIM card.

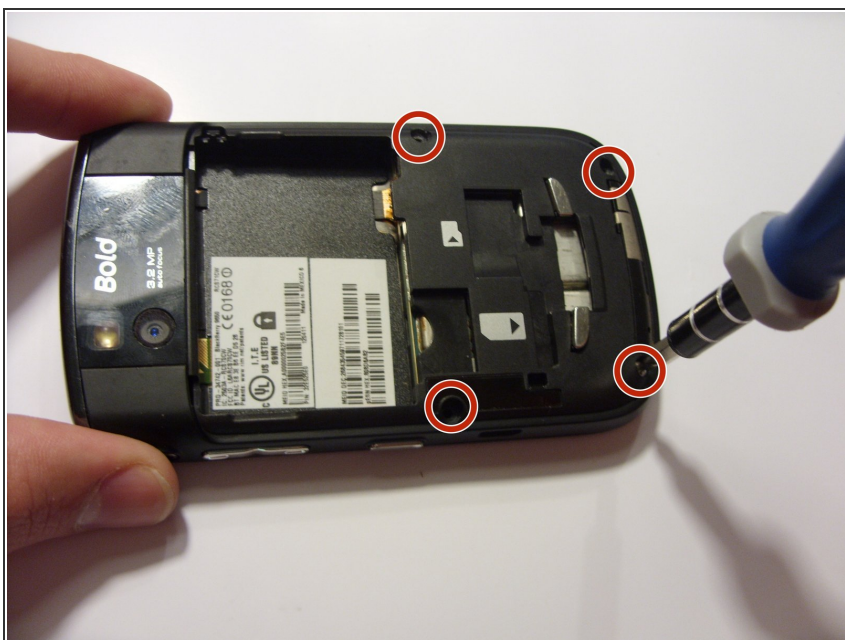
### Step 4



- Gently pull out the SIM card.

⚠ The card will break in half if you apply too much force when pulling out the card.

## Step 5 — Back Chassis



- Using a T6 Torx screwdriver, remove the four screws from the bottom half of the device.

## Step 6



- Orient the device so that the screen is facing you.
- Using a spudger, remove the ear piece cover.

## Step 7



- Using a T6 Torx screwdriver, remove the two screws from the top corners of the device.

## Step 8



- Remove the back chassis by gently pulling the chassis back and forth.

⚠ The headphone jack can break if the chassis is pulled too forcefully.

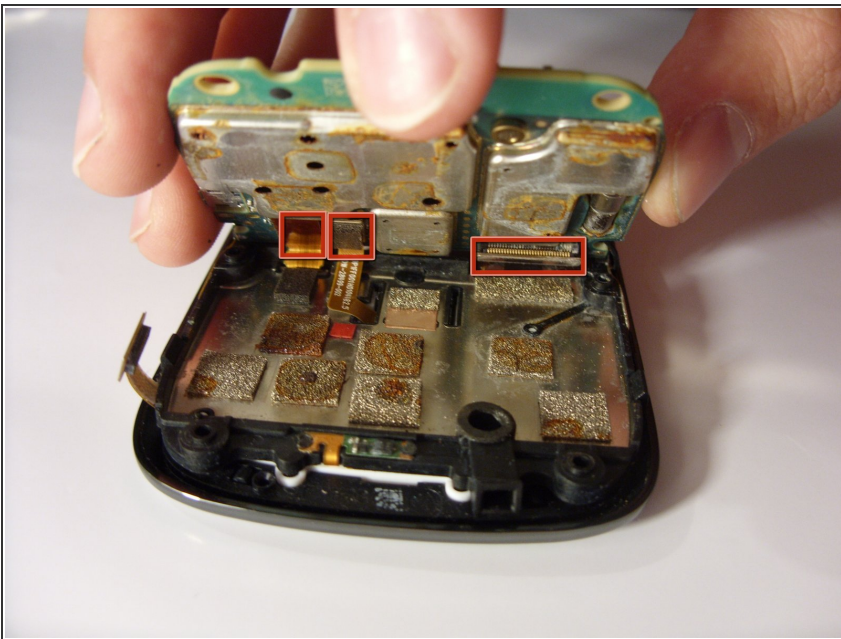


## Step 9 — Mother Board



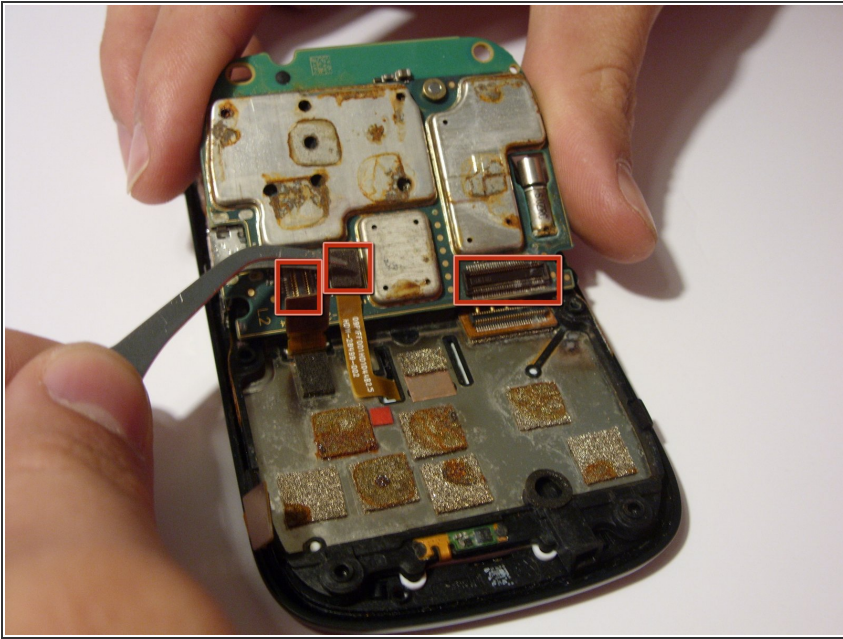
- Orient the device so that the screen is facing the ground, and the top of the phone is facing you.
- Using a pair of tweezers, lift and remove the following:
  - The two round connectors on the top of the mother board.
    - ⓘ The round connectors are hooked into the mother board.
  - The flat connector in the lower corner of the mother board.

## Step 10



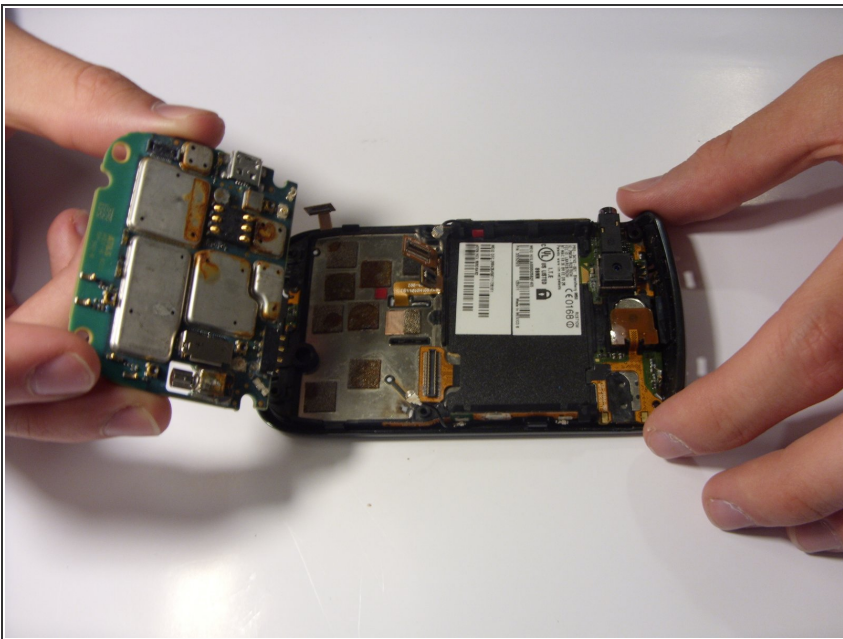
- Using your fingers, carefully lift and remove the mother board.
- ⚠ The connectors underneath the mother board are delicate and easily damaged.

## Step 11



- Using a pair of tweezers, remove the three ribbon connectors.

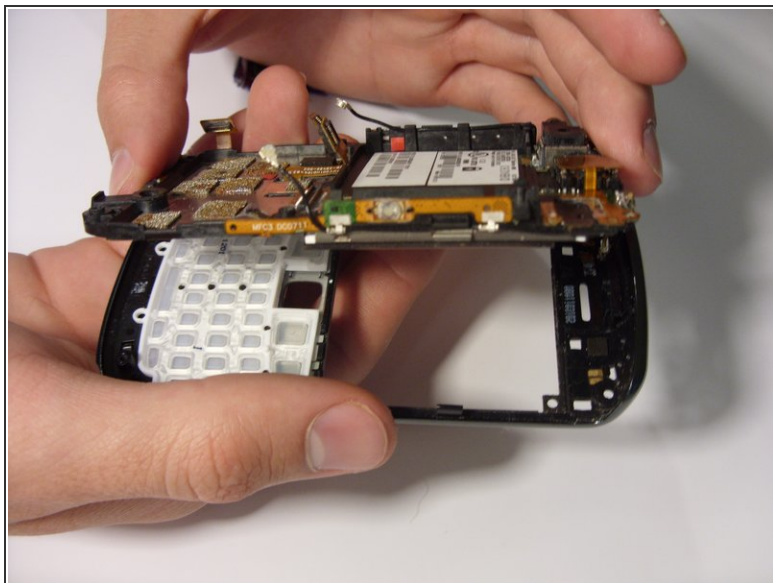
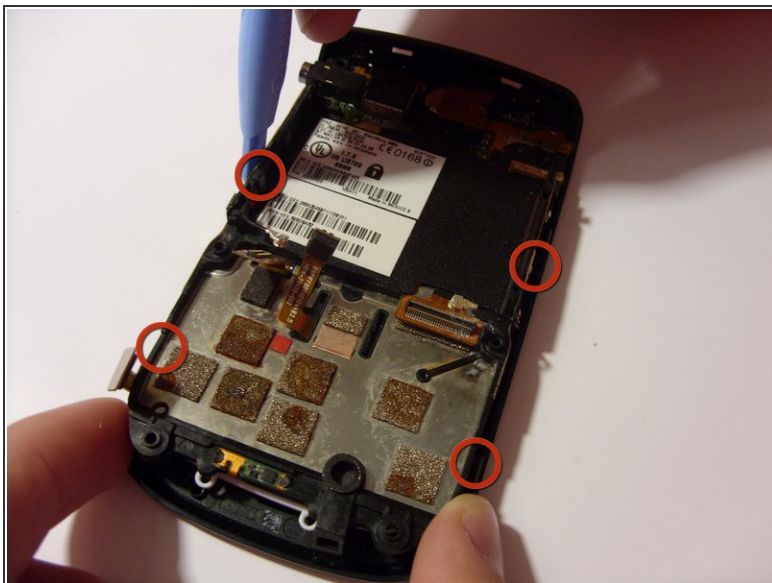
## Step 12



- Remove the mother board by lifting the board upward.

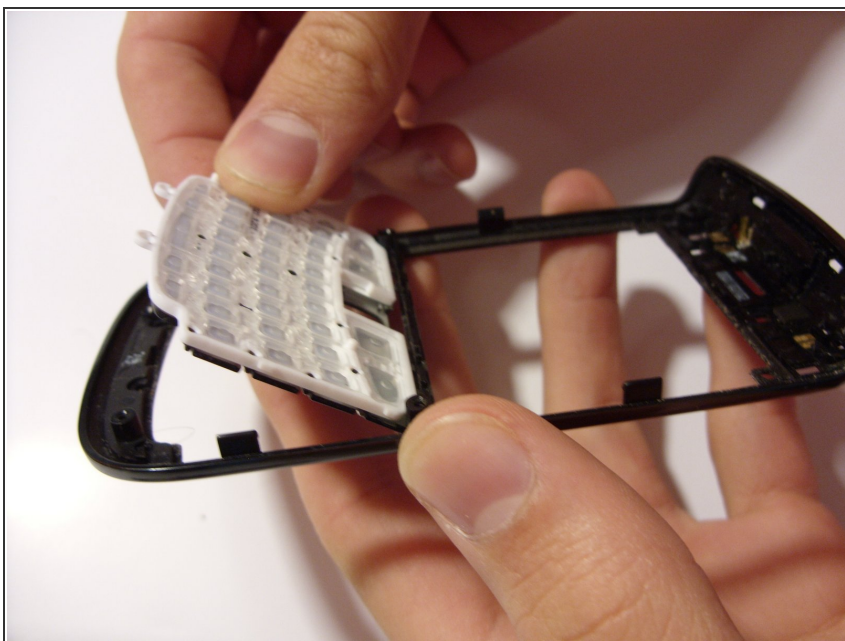


## Step 13 — Faceplate



- Using a pry tool, lift up on the four tabs located on the edges of the faceplate.
- Remove the faceplate by lifting the plate upward.

## Step 14 — Keypad



- Lift the keypad out of the the front cover.

To reassemble your device, follow these instructions in reverse order.