



Samsung Galaxy Tab A 7.0 Battery Replacement

During all steps, handle every component with...

Written By: Bradley Watson



INTRODUCTION

During all steps, handle every component with care as they are very delicate electronic parts.



TOOLS:

[iFixit Opening Tool](#) (1)

[Tweezers](#) (1)



PARTS:

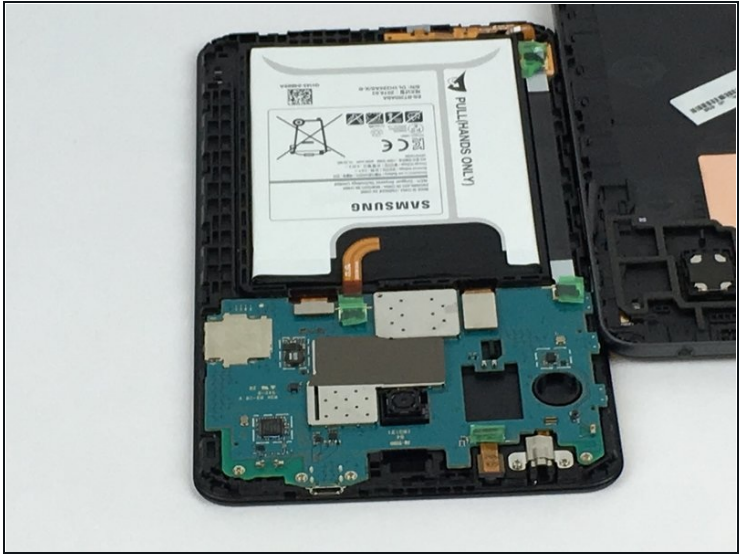
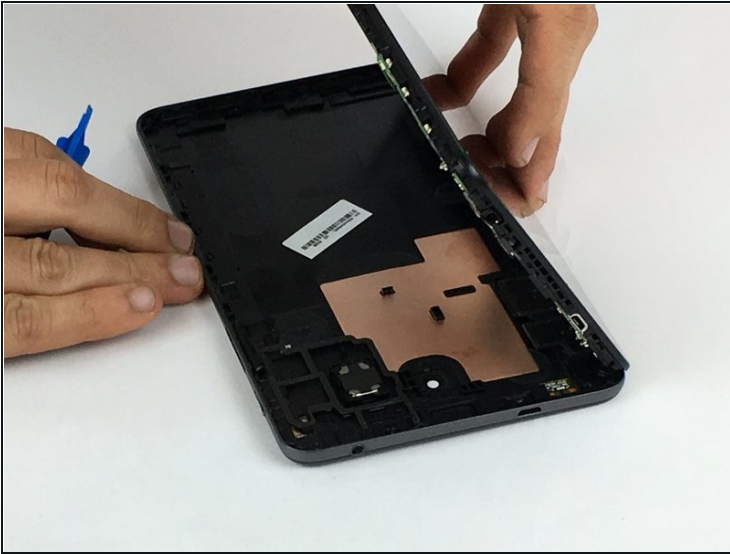
[Galaxy Tab A 7.0 Battery](#) (1)

Step 1 — Battery



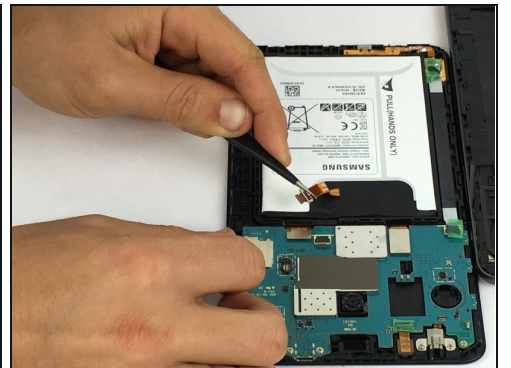
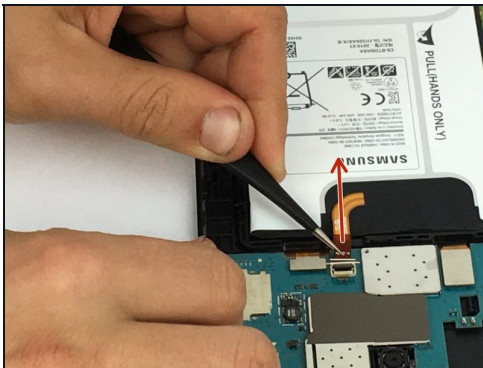
- Using the plastic opening tool, starting at any corner on the tablet, insert the tool between the back panel and the front panel.
- Slide tool around the tablet to unlock the panels from one another.

Step 2



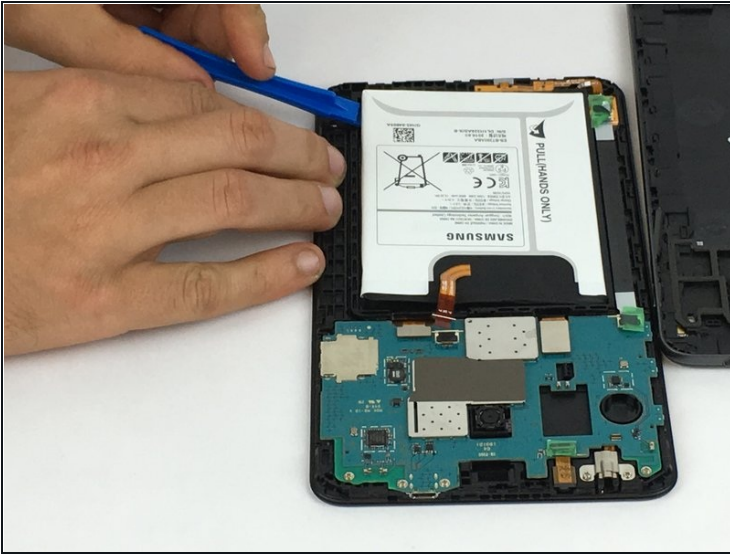
- Carefully remove the back panel from the front panel.
- The inner components of the tablet will now be exposed.

Step 3



- Using [tweezers](#), gently lift the black tab locking the wire connecting the battery to the motherboard.
 - Pull wire from connector.
- ⓘ This is the only connection for the battery to the motherboard.

Step 4



- Remove the battery from the device.
- ① Separating tool may be needed in order to lift battery from device.

To reassemble your device, follow these instructions in reverse order.