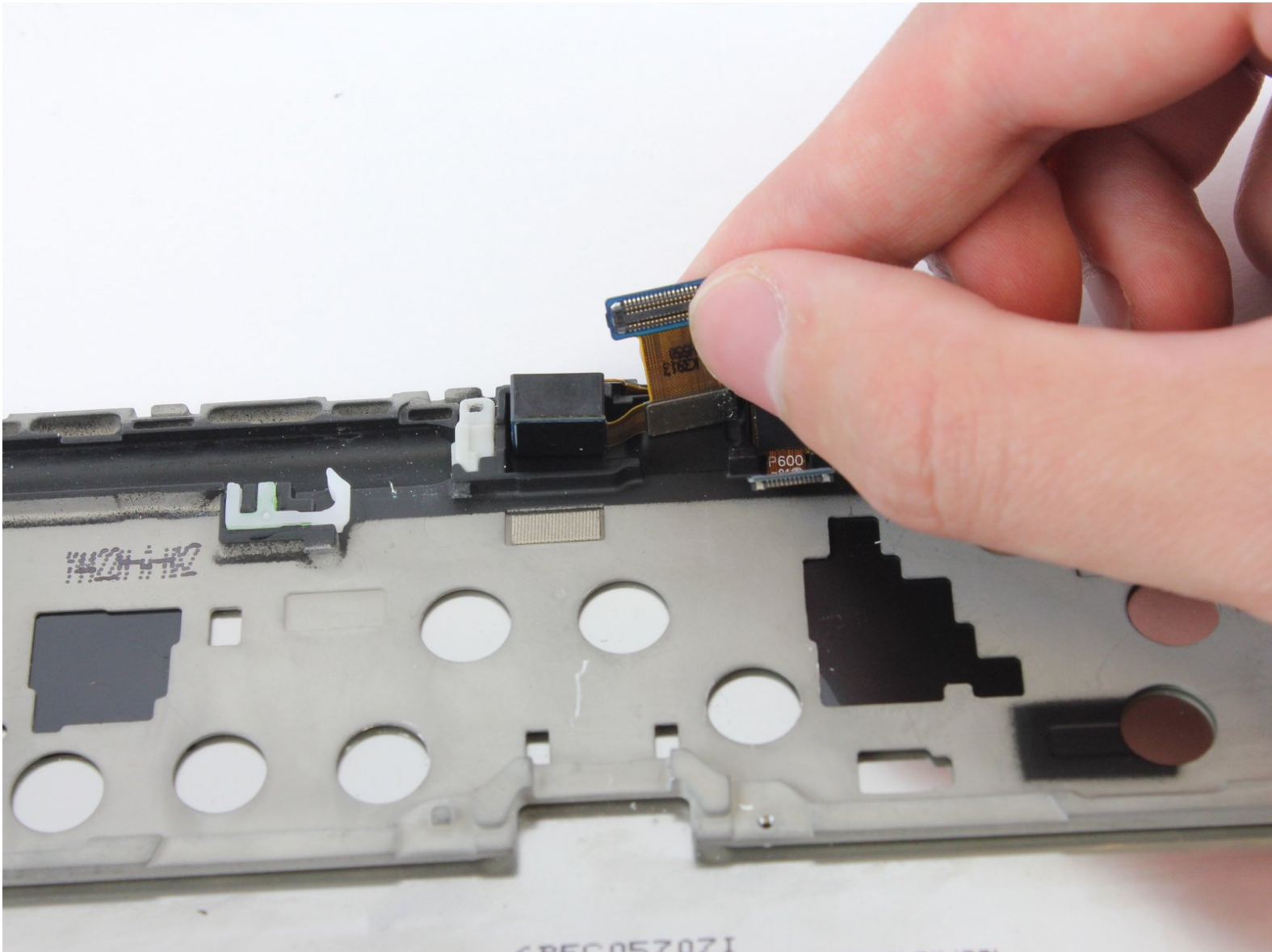




Samsung Galaxy Note 10.1 2014 Rear Camera Replacement

Use this guide to replace a nonfunctional camera in your Samsung Galaxy Note 10.1 2014 edition.

Written By: Joseph Rasico



INTRODUCTION

This guide will teach you how to replace a camera in your Samsung Galaxy Note 10.1 2014 edition.



TOOLS:

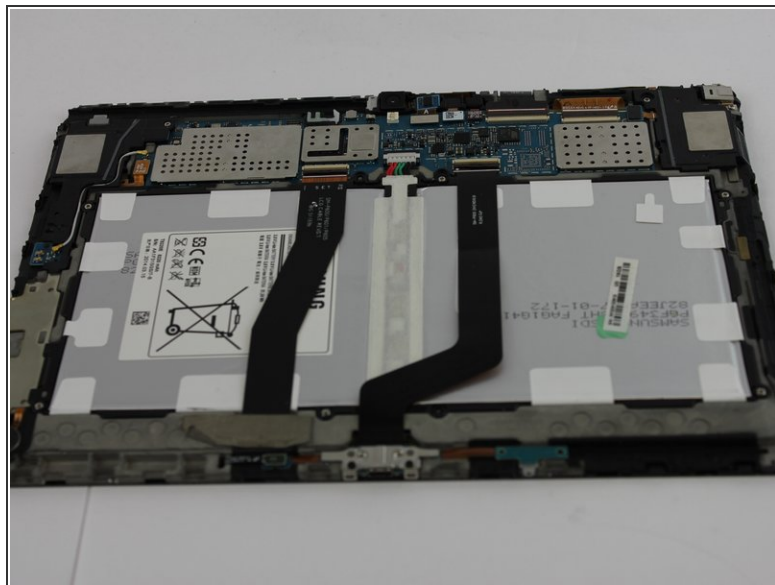
- [Black Nylon Spudger](#) (1)
- [Metal Spudger](#) (1)
- [Phillips #000 Screwdriver](#) (1)



PARTS:

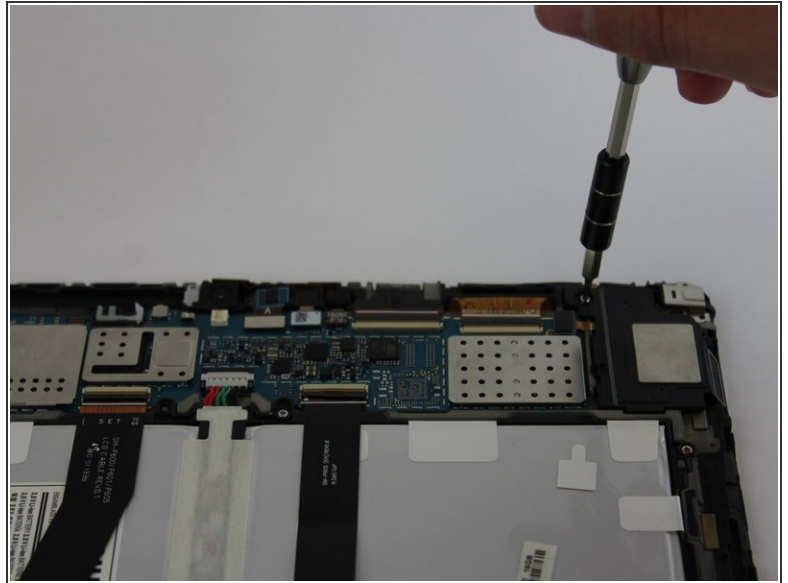
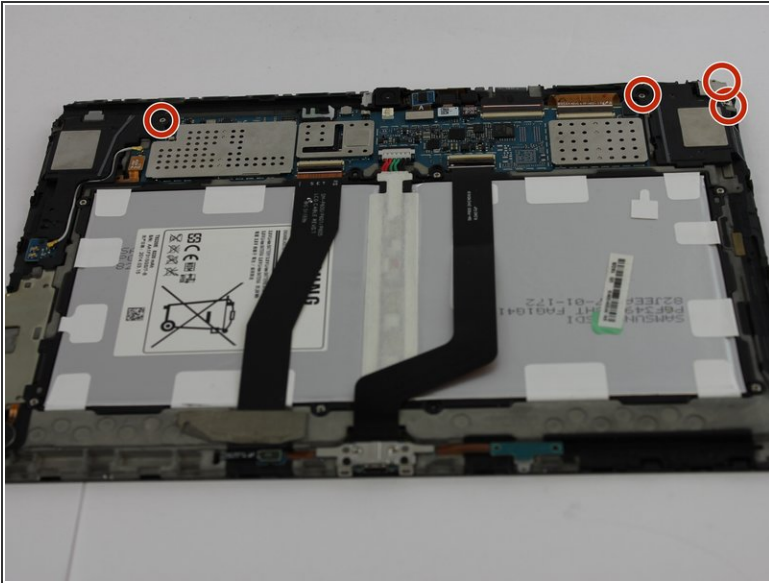
- [Galaxy Note 10.1 \(2014\) Rear Facing Camera](#) (1)

Step 1 — Case



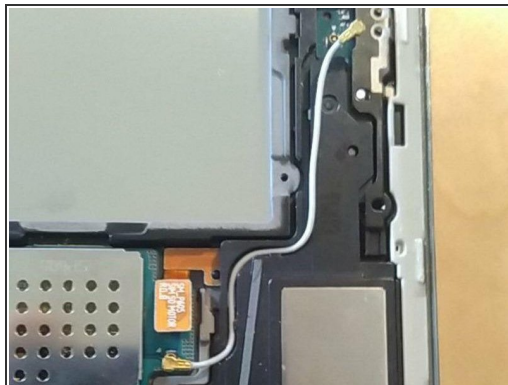
- Using the [nylon spudger](#) or [plastic opening tool](#) along the edges of the screen, separate the back case off of the device.
- ⓘ If possible, consider using the black nylon spudger for a gentler separation.

Step 2 — Loudspeaker Modules



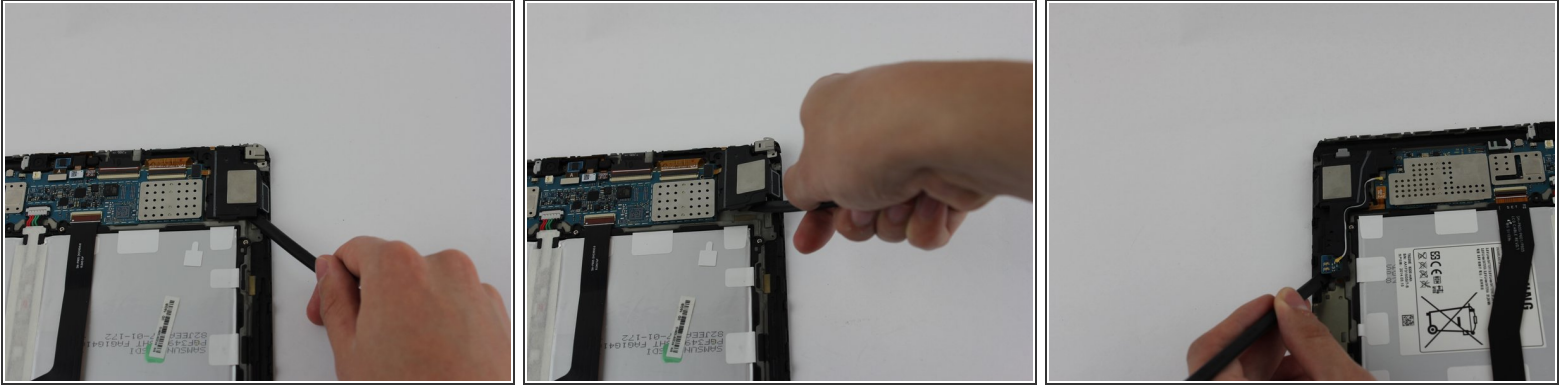
- Remove the three 3mm screws on the top right side of the device with the Phillips PH000 screw head.
- Remove the one 3mm screw on the top left side of the device with the same method.

Step 3 — loudspeaker - remove right speaker



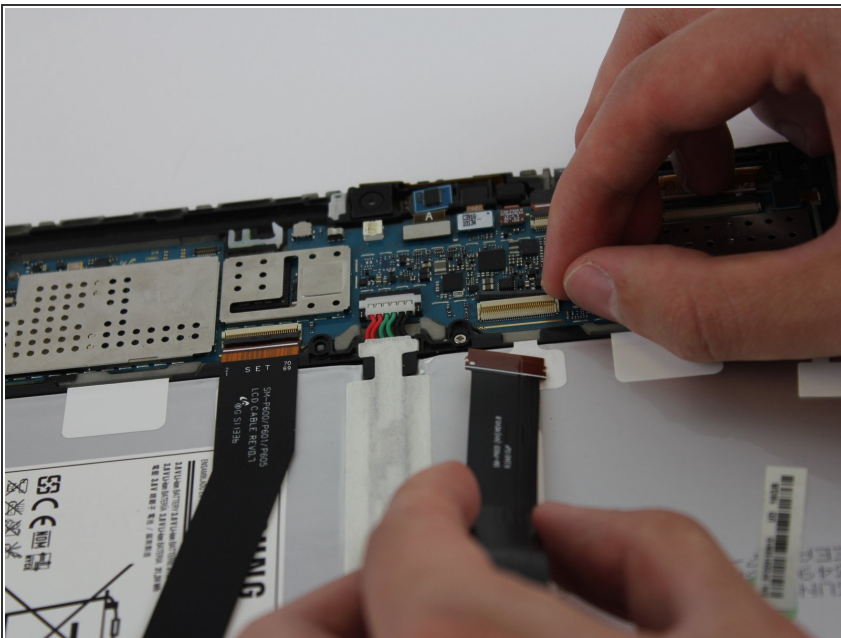
- Remove the gray rubber piece.
- Use a spudger or fingernail to disconnect the blue antenna cable from the motherboard.
- Remove the right speaker unit.

Step 4



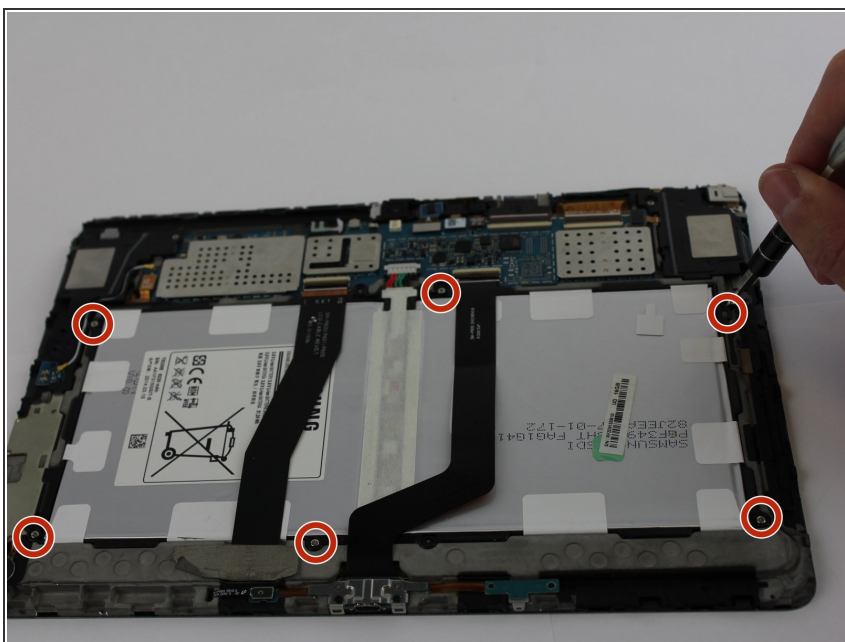
- Remove the loudspeaker modules located on the parts where the screws were removed by using the black nylon spudger.
- ⓘ They are the black pieces at the top left and right corners of the device that have metal squares on them in the middle.

Step 5 — Battery



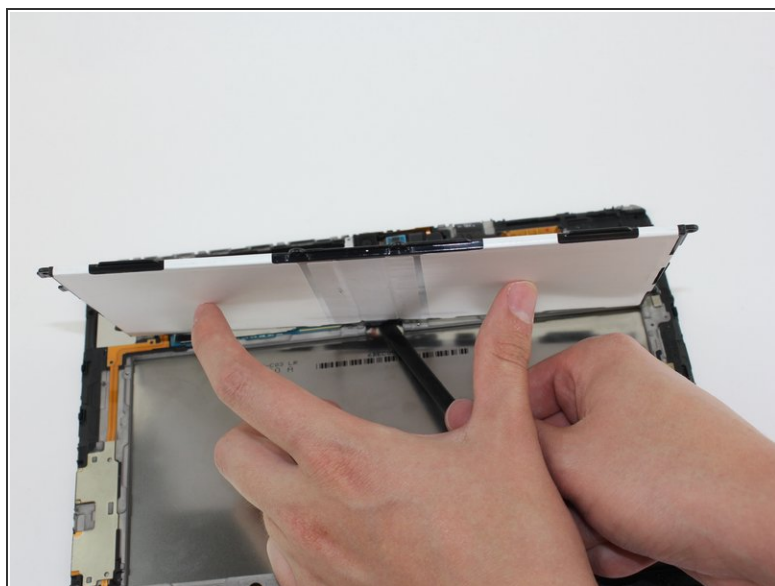
- Place your finger on the thin black bar at the end of the ribbon tape and flip each one up.
- Gently pull the ribbon tape on the battery away from the bar. Repeat this process for the second ribbon tape.

Step 6



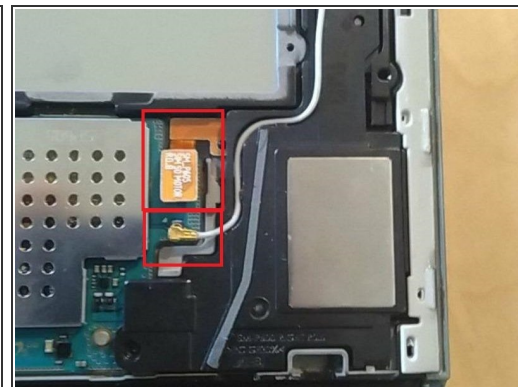
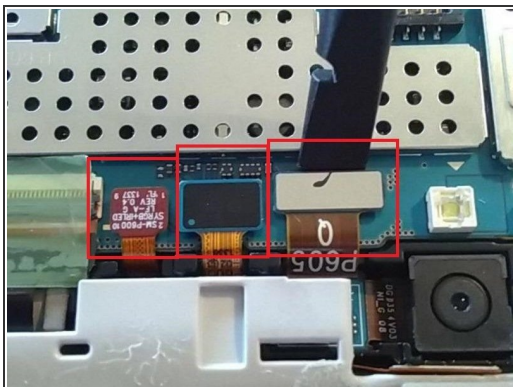
- Remove the six 3mm screws around the battery with the [Phillips PH000 screwdriver](#).

Step 7



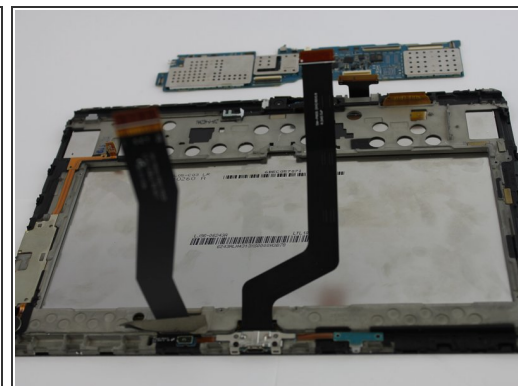
- Lift up the battery from the bottom and situate the [black nylon spudger](#) underneath the battery.
- Use the black nylon spudger to disconnect the multi-colored wires from the rest of the device.

Step 8 — Motherboard



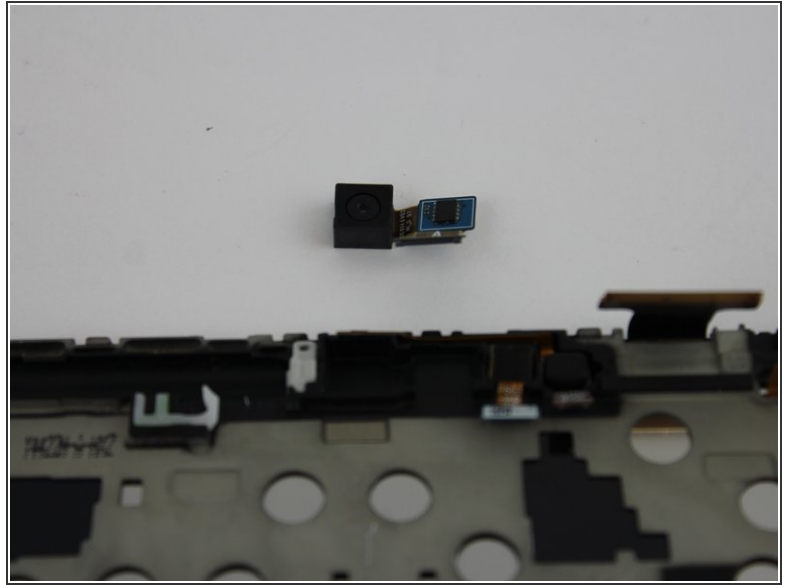
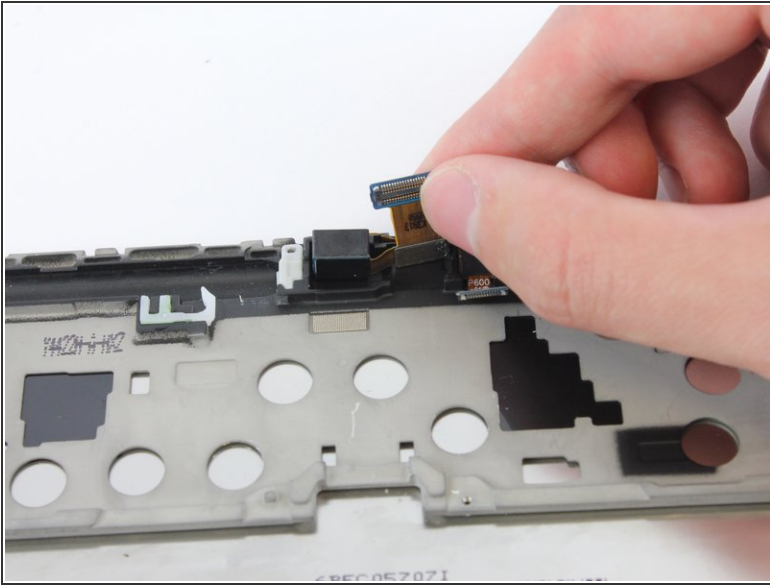
- Disconnect all cables on the motherboard.
- ⓘ See our [connector guide](#) for help safely disconnecting various types of connectors.

Step 9



- Use the black nylon spudger to gently lift the motherboard away from the frame.
- Remove the motherboard.

Step 10 — Rear Camera



- Disconnect the camera piece from the motherboard.
- ⓘ The camera piece is shaped like an "L".

To reassemble your device, follow these instructions in reverse order.