



Samsung Galaxy Tab A 7.0 Front Facing Camera Replacement

Replace faulty front facing camera for your Samsung Galaxy Tab A 7.0".

Written By: Bradley Watson



INTRODUCTION

During all steps, handle all components with care as they are delicate electronic components.



TOOLS:

- [iFixit Opening Tools](#) (1)
- [Tweezers](#) (1)



PARTS:

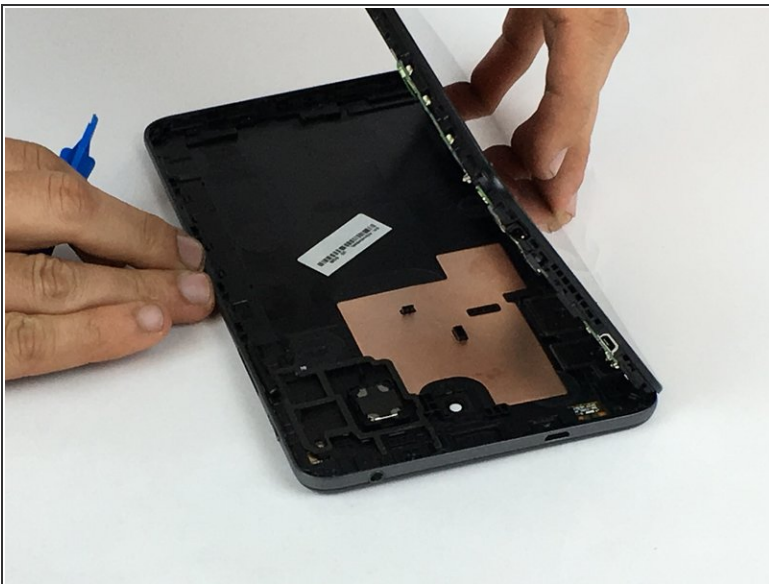
- [Galaxy Tab A 7.0 Front Facing Camera](#) (1)

Step 1 — Front Facing Camera



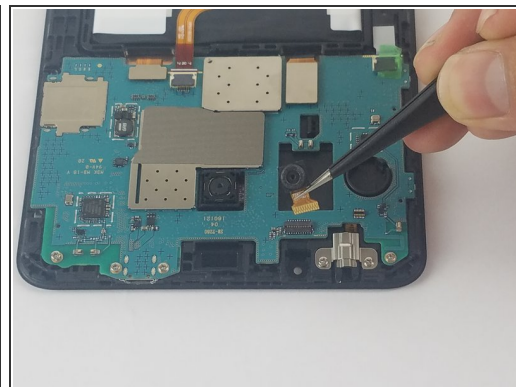
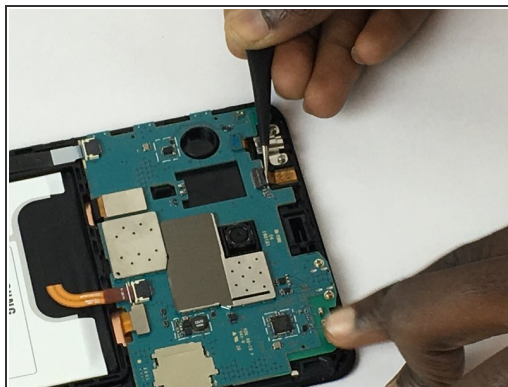
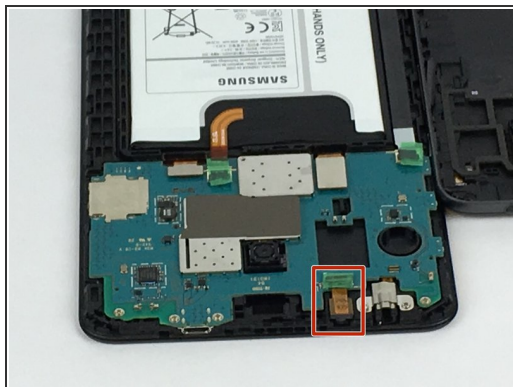
- Using the plastic opening tool, starting at any corner on the tablet, insert the tool between the back panel and the front panel.
- Slide tool around the tablet to unlock the panels from one another.

Step 2



- Carefully remove the back panel from the front panel.
- The inner components of the tablet will now be exposed.

Step 3



- Using tweezers, at the end of the gold wire, gently lift the black tab locking the wire connecting the camera to the motherboard.
- Pull the wire from the connector, disconnecting the camera from the device entirely.

To reassemble your device, follow these instructions in reverse order.