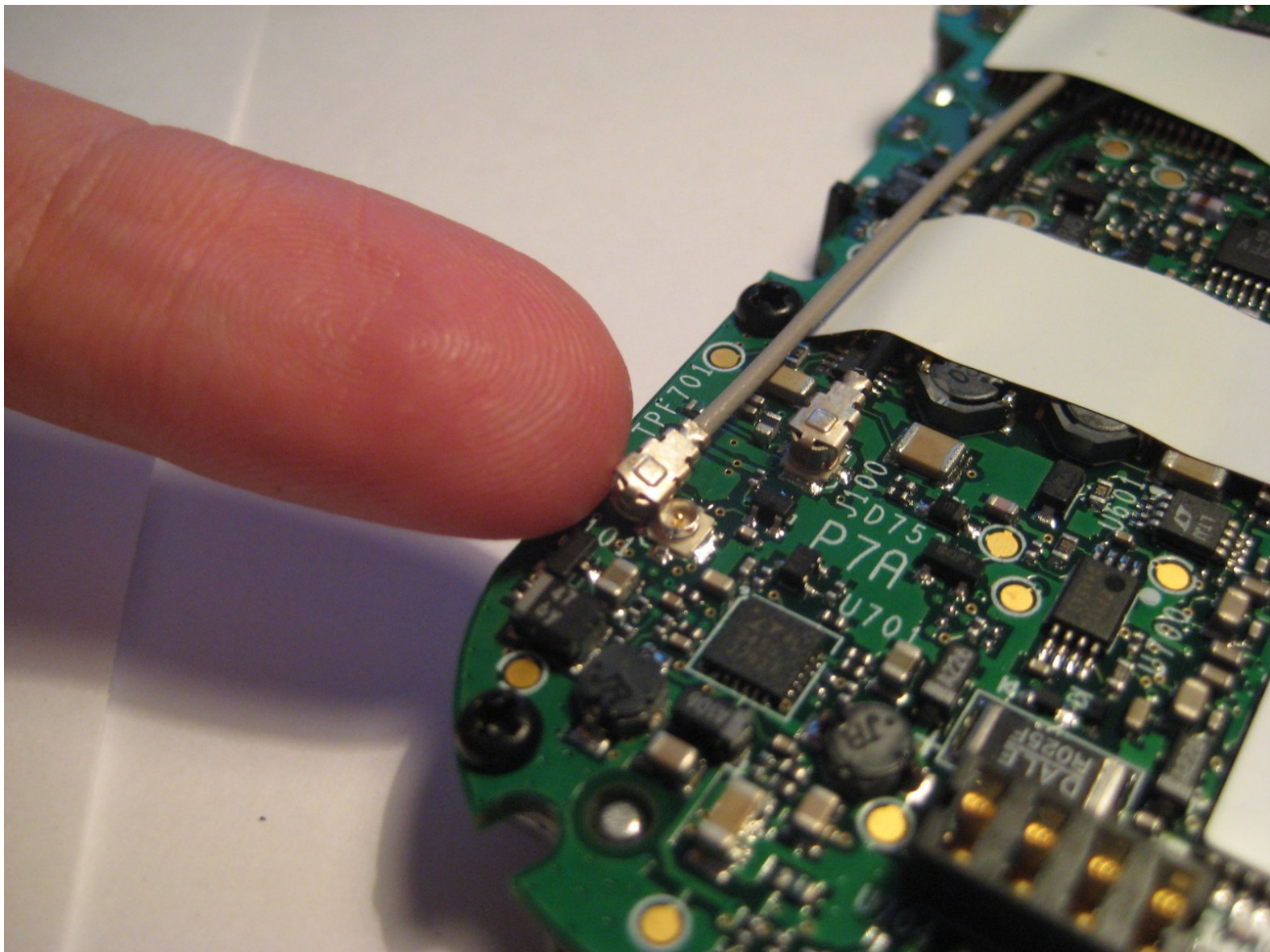




Reattaching Delphi MyFi XM2GO Antenna Connectors

This guide details an internal antenna connector check for the U.FL connectors on the Delphi XM2GO.

Written By: RoNique Staley





TOOLS:

- [T6 Torx Screwdriver](#) (1)
-

Step 1 — Battery Cover



- Locate the large button on the top of the device.
- Push down on the button and slide the cover away from the button.

 The battery removal tab may pop up.

Step 2 — Battery



- Grab the red pull tab and pull down to unlock the latch.
- Pull the battery out.

Step 3 — Motherboard



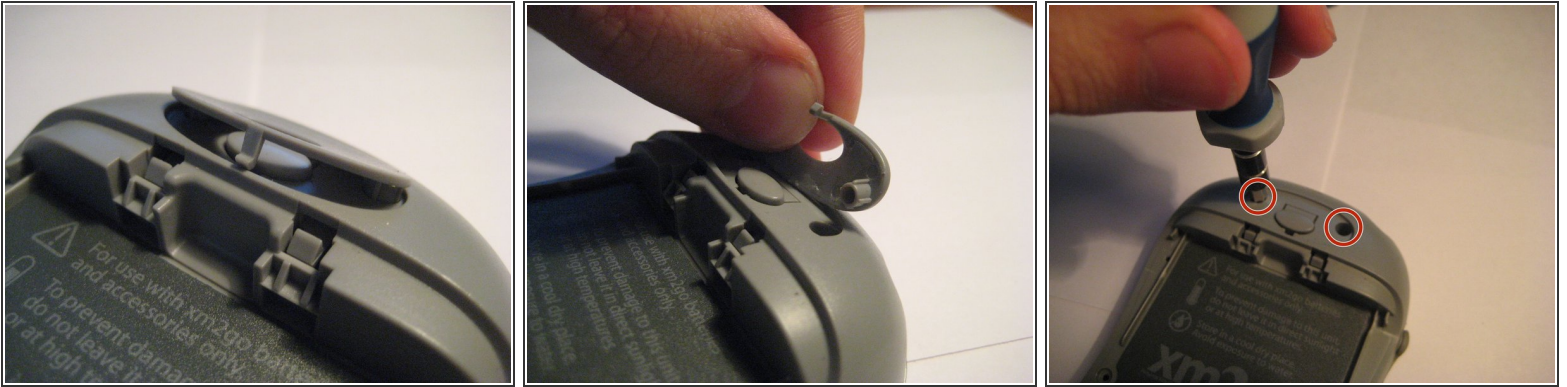
- Remove the four screws from the bottom of the device using a T6 Torx screwdriver.

Step 4



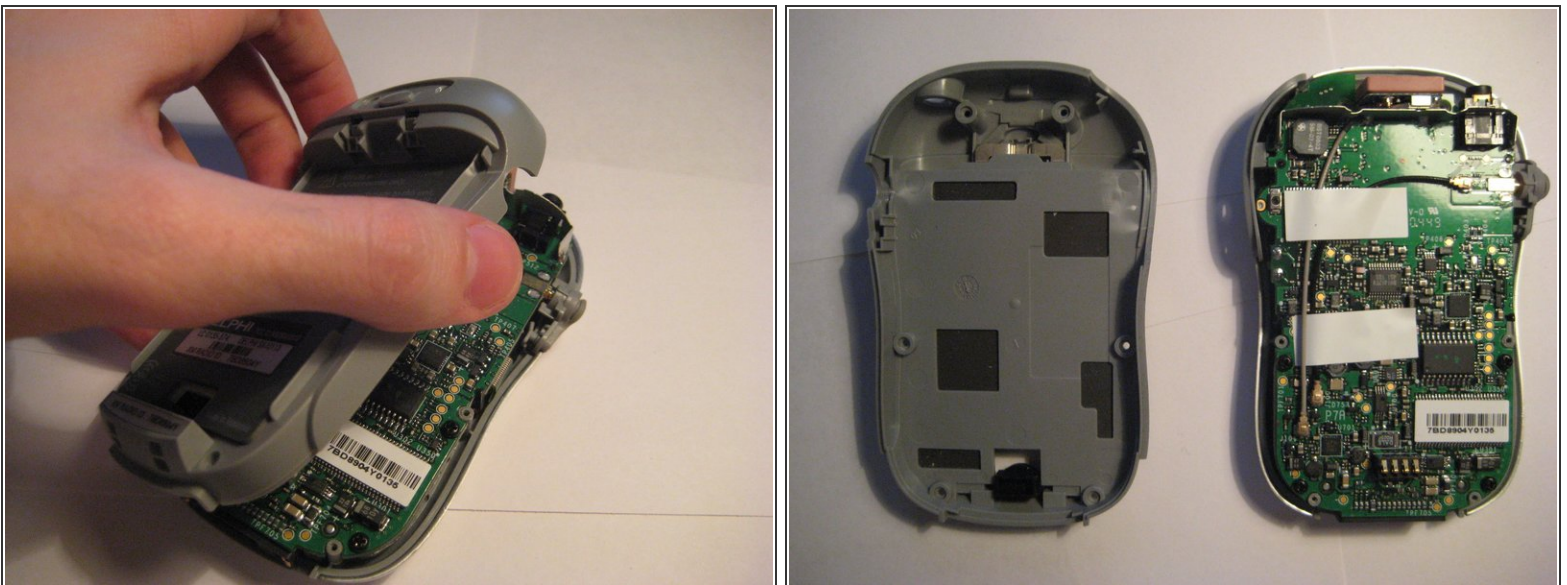
- Remove the button cover on the back of the device by prying it up with a spudger or your thumb nail.

Step 5



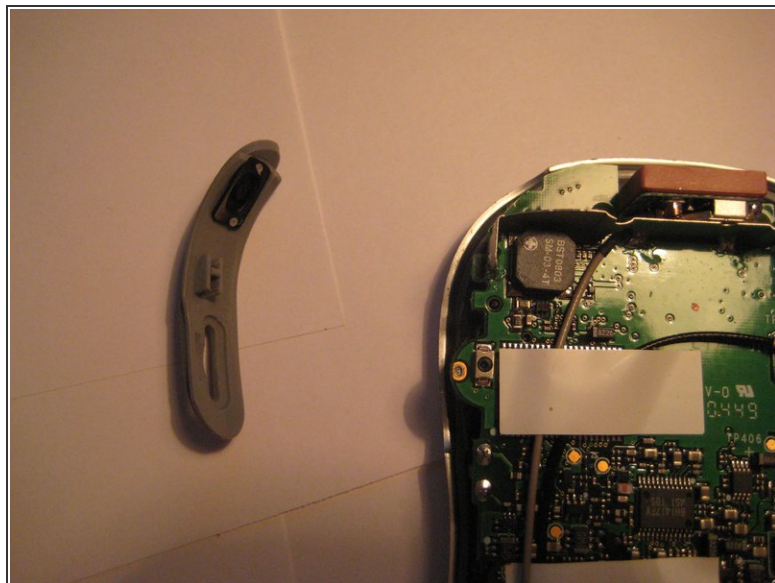
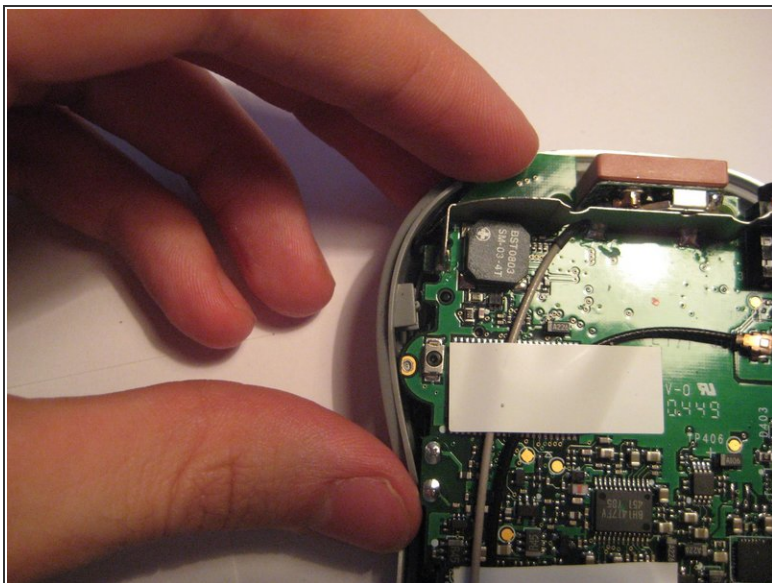
- Remove the two screws under the button using the T6 Torx screwdriver.

Step 6



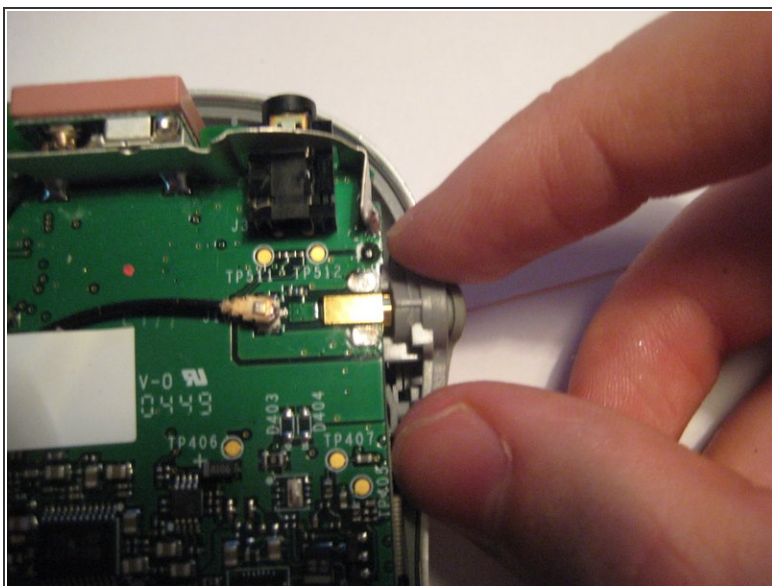
- Remove the back cover.

Step 7



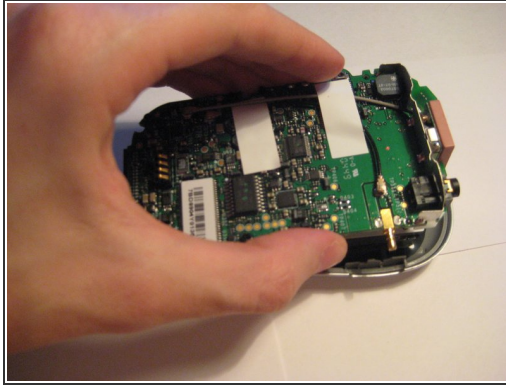
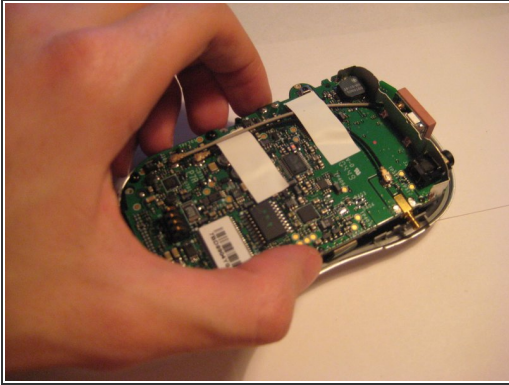
- Remove the power button by pulling it to the left.

Step 8



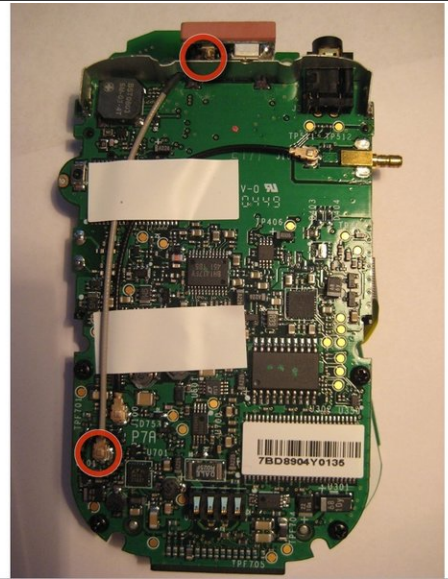
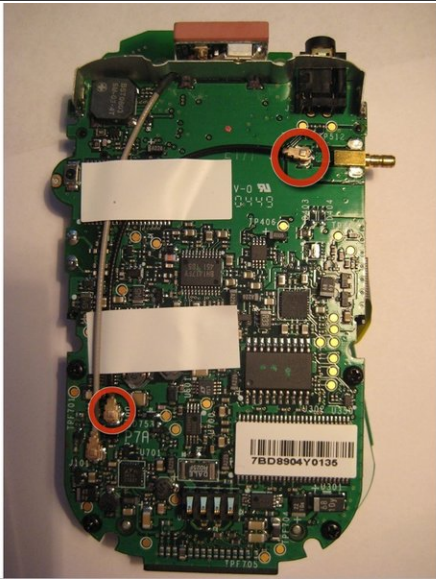
- Remove the plastic antenna extension connector on the right side of the device.

Step 9



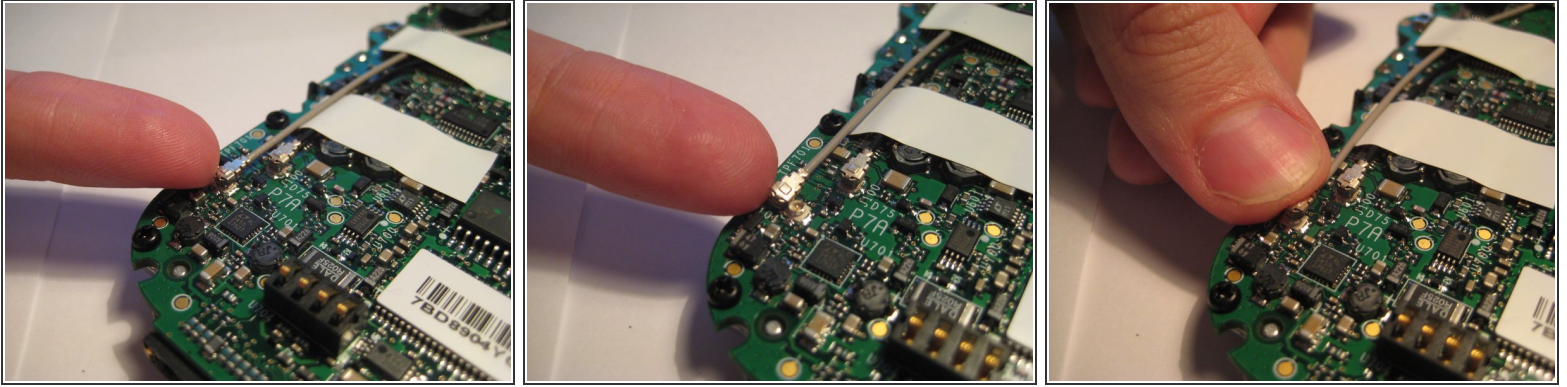
- Pull up on the motherboard to remove it from the device.
- ⓘ The LCD screen and keypad are only connected to the motherboard with ribbon cables. They will hang down as the motherboard is removed.

Step 10 — Reattaching Delphi MyFi XM2GO Antenna Connectors



- In the first picture, a connection may be seen with the black cable connecting the external antenna connector to the internal logic board (PCB) via U.FL connectors. The connectors on the ends of the cable are circled in red.
- In the second picture, a connection may be seen with the with the gray cable connecting the external antenna connector to the internal logic board (PCB) via U.FL connectors. The connectors on the ends of the cable are circled in red.

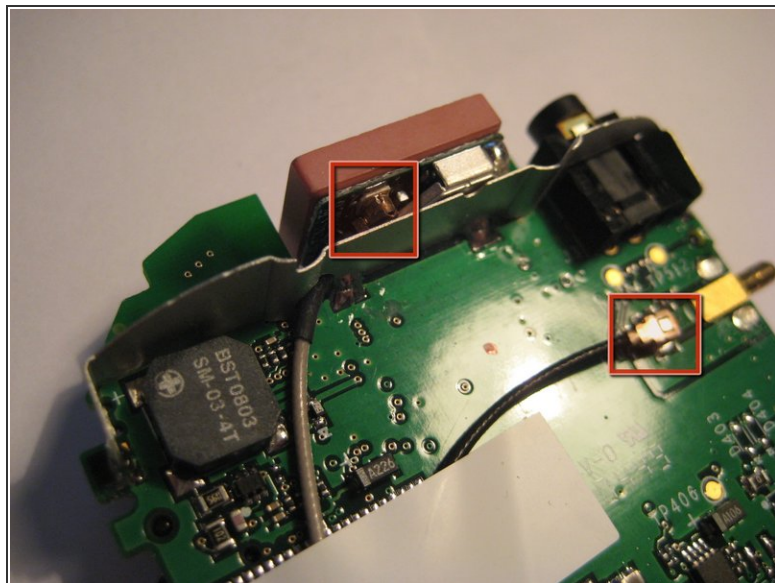
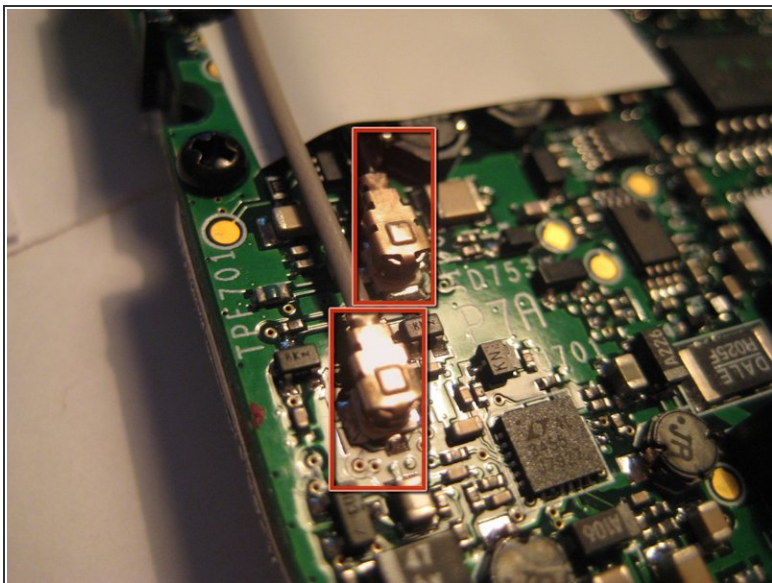
Step 11



- These antenna cables may need to be replaced should the connection drop from the XM Satellite service.
- To remove, catch the side of the connector with a fingernail moving upward until the connectors pops up from the board.
- After the U.FL connector is loose, center the new connector cable over the mating U.FL connector and press down firmly.

⚠ CAUTION: The connectors are delicate, so take much care when reconnecting.

Step 12



- The U.FL antenna connectors should be secure and immobile as shown in the pictures.
- Try moving them back and forth on the board to assure they are secure.
- The U.FL antenna connectors are shown to be secure in the pictures highlighted with red boxes.

To reassemble your device, follow these instructions in reverse order.