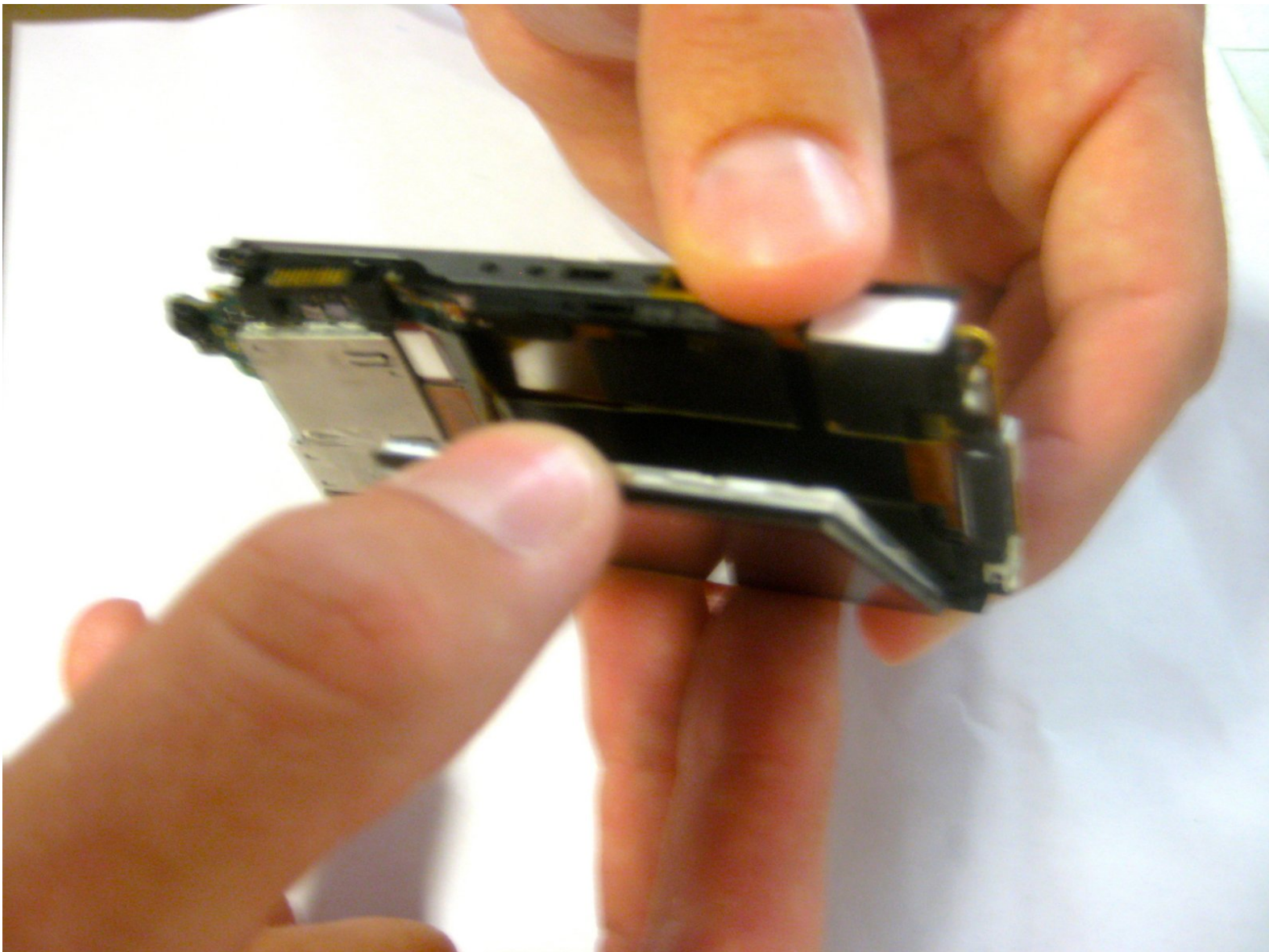




Sony Ericsson W350a Screen Replacement

This guide gives a step-by-step process for disassembling the Sony Ericsson W350a phone and replacing the screen.

Written By: Ldellos





TOOLS:

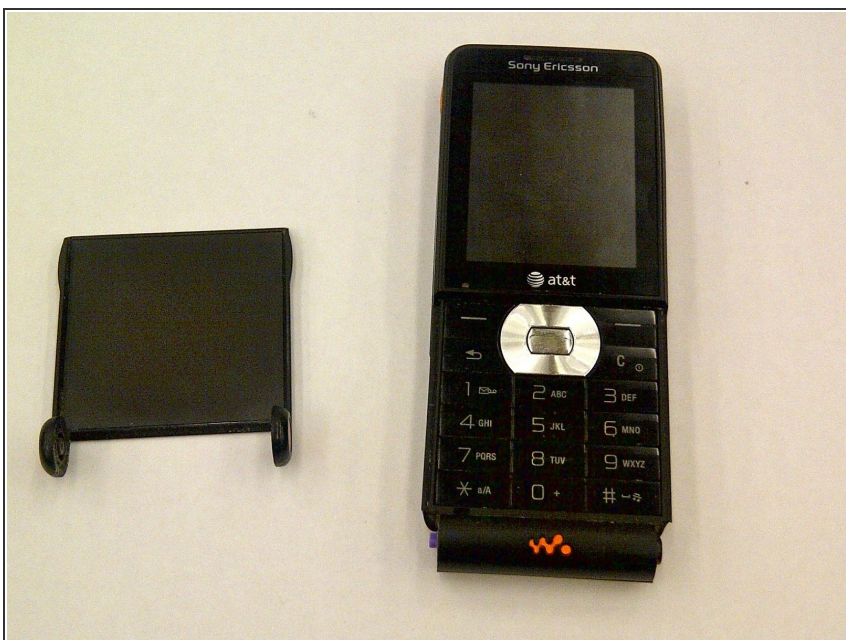
- [iFixit Opening Tools](#) (1)
- [Phillips #00 Screwdriver](#) (1)

Step 1 — Flip Cover



- Place the plastic opening tool in the bottom corner of the phone in the crevice between the flap to remove the cover.

Step 2



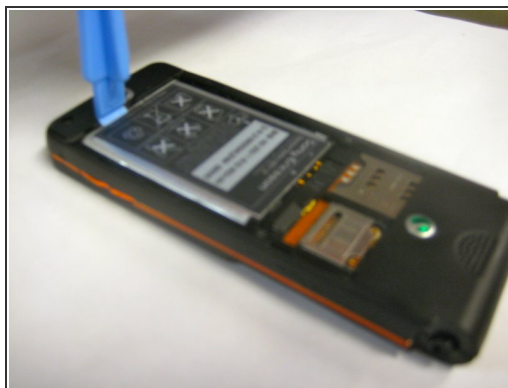
- Remove the cover with a slight twisting motion.

Step 3 — Battery



- Place the phone face down on a flat smooth surface so that the camera, logos, and speaker face up.
- Using the provided notch on the bottom of the back cover, insert a plastic opening tool and lift upwards to remove the back cover of the phone.

Step 4



- Set the cover to the side upon removal.
- Insert the plastic opening tool into the crevice between the camera and the battery of the phone. Using a gentle prying motion, lift the end of the battery and remove.
- After removal, recycle the defective battery appropriately.

Step 5 — Speaker



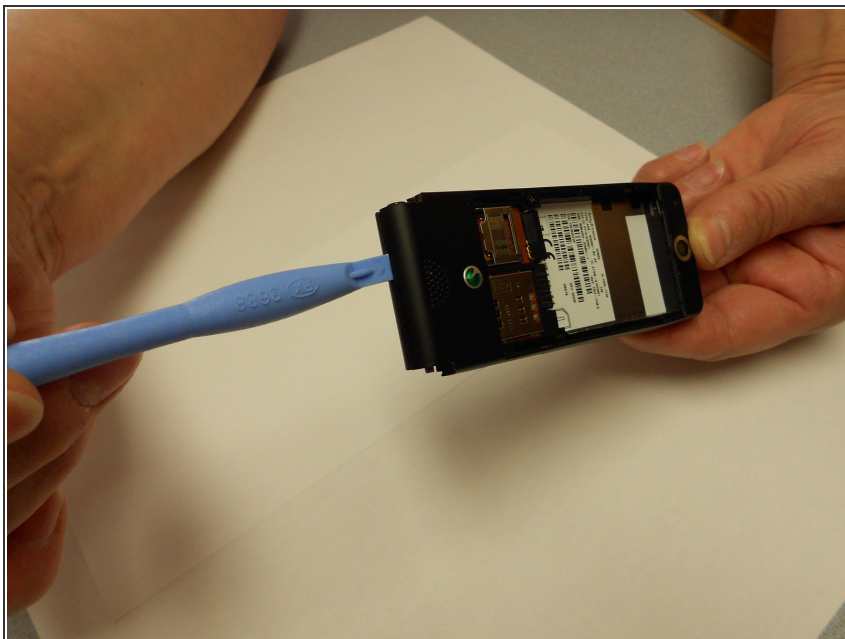
- Flip the phone over and remove the Sony Ericsson sticker that is over the phone's ear speaker.
- Using a T5 screwdriver, loosen and remove the two screws under the Sony Ericsson sticker by turning them counterclockwise.

Step 6



- Using a mini Phillips screwdriver, remove two screws by turning them counterclockwise.

Step 7



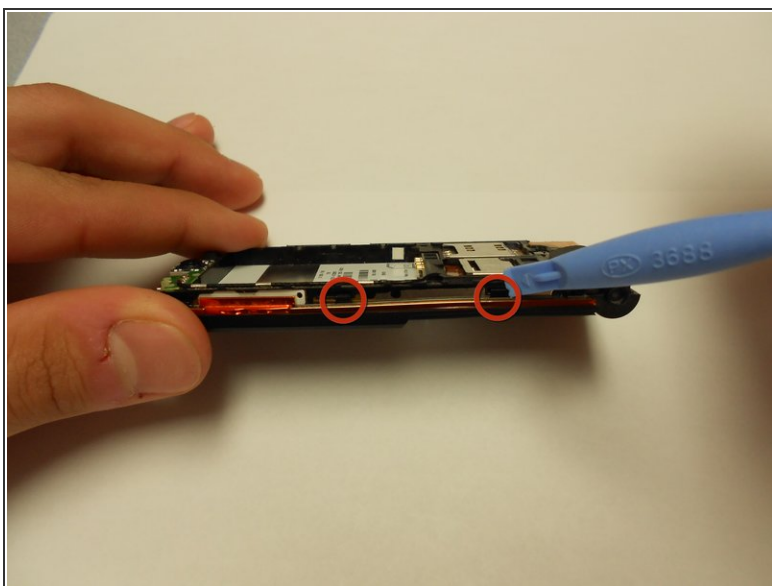
- Insert an opening tool in the bottom crack between the front and back plates and use a gentle upward pull to separate the back case from the front case.
- ⓘ Side buttons/controls may fall from their place in between the back and front casings.

Step 8



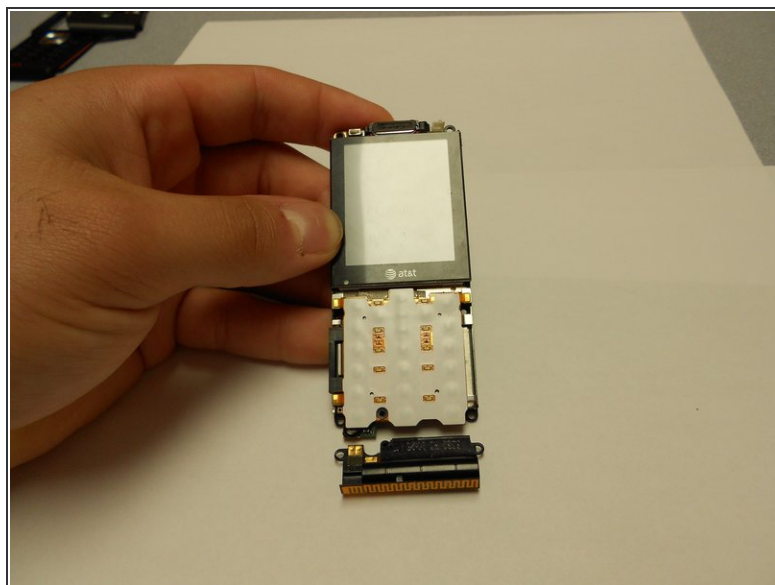
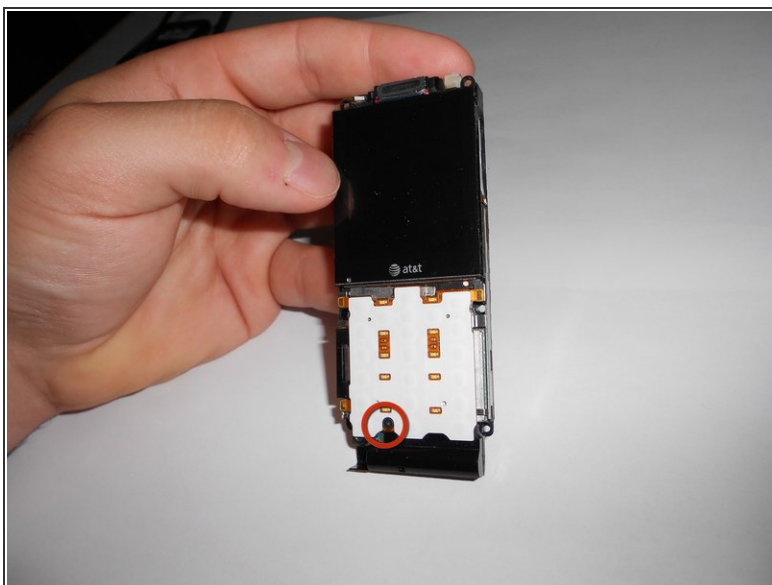
- Using a T5 screwdriver, remove the two screws by turning them counterclockwise.

Step 9



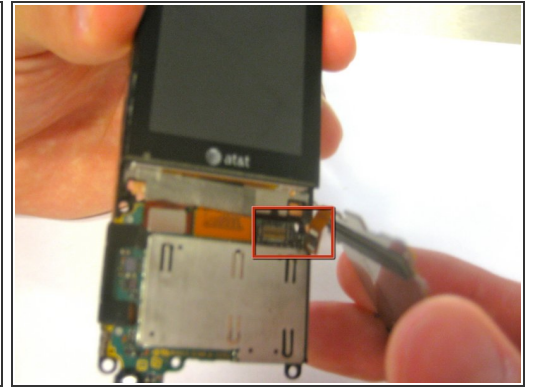
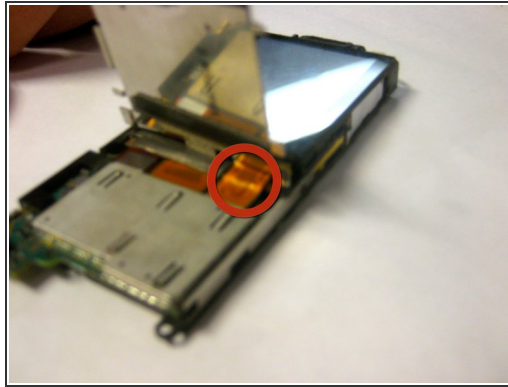
- Using an opening tool and a gentle outward motion, separate the front plate from the inner phone workings.

Step 10



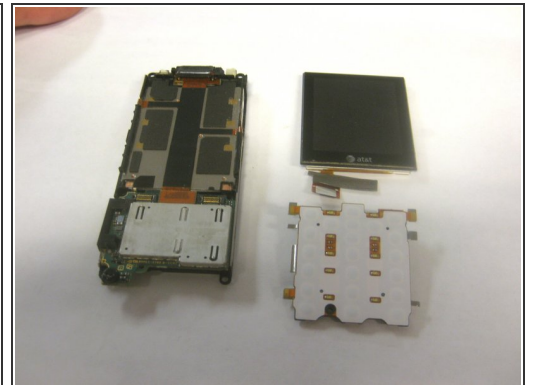
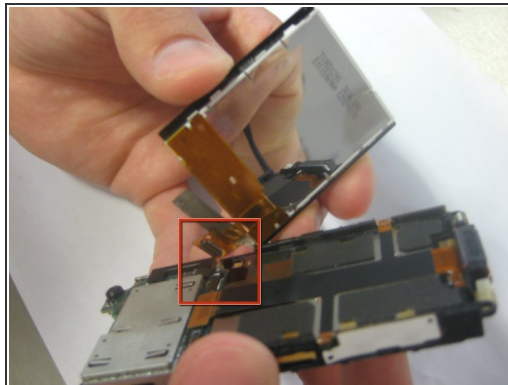
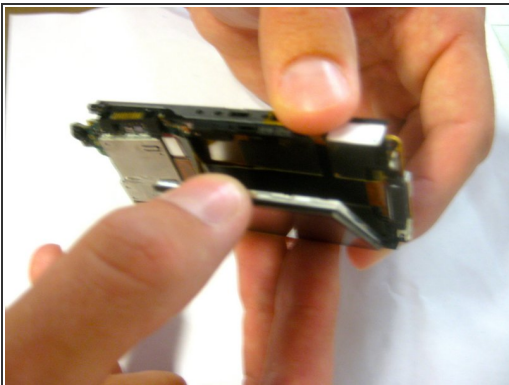
- Using a Phillips head screwdriver, remove the screw from the front number pad by turning it counterclockwise.
- Remove the speaker from the phone.

Step 11 — Keypad



- Disconnect the ribbon cable from its connection until the keypad "pops" off.
- Remove the keypad from the phone.

Step 12 — Screen



- After removing the keypad, gently pry apart the screen from the frame of the phone using your fingers and thumbs on opposite sides as shown.
- Even though the screen is detached from the frame, it will still be electronically connected in a similar fashion as the keypad. This connection is shown in the second picture. To sever this connection, gently pull the wire tape until the male member pops out of its counterpart of the phone.
- Once the screen and keypad are removed, the assembly of the phone should be as shown in the third picture.

To reassemble your device, follow these instructions in reverse order.