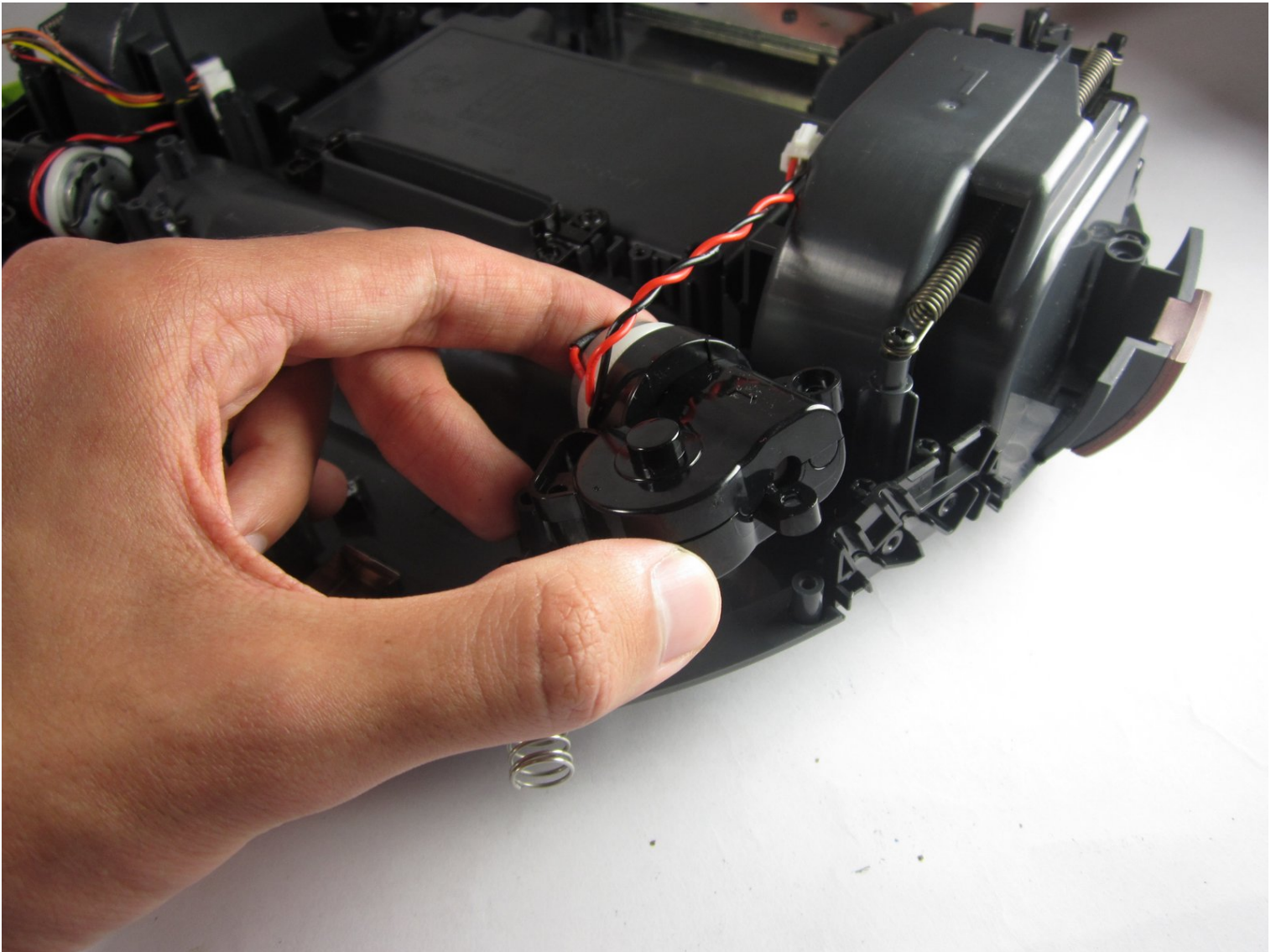




RYDIS H68 Pro Side Brush Motor Replacement

The side brushes are a problem many people...

Written By: jude auguste



INTRODUCTION

The side brushes are a problem many people encounter when dealing with the RYDIS H68 Pro. This guide will show you how to fix a side brush issue.

TOOLS:

Phillips #1 Screwdriver (1)

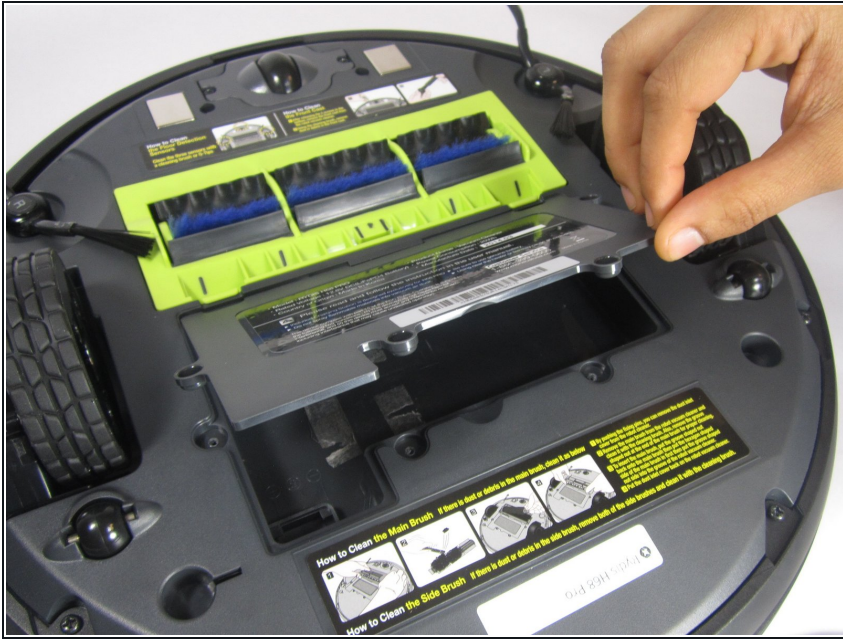
Metal Spudger (1)

Step 1 — Battery



- Flip the vacuum over so that the wheels are facing you.
- Use a Phillips #1 screwdriver to remove the four 10 mm screws that surround the battery cover.

Step 2



- Lift the battery cover up to reveal the battery.
- Remove the battery.

Step 3 — Bumper



- Remove the eight 10 mm Phillips #1 screws.

Step 4



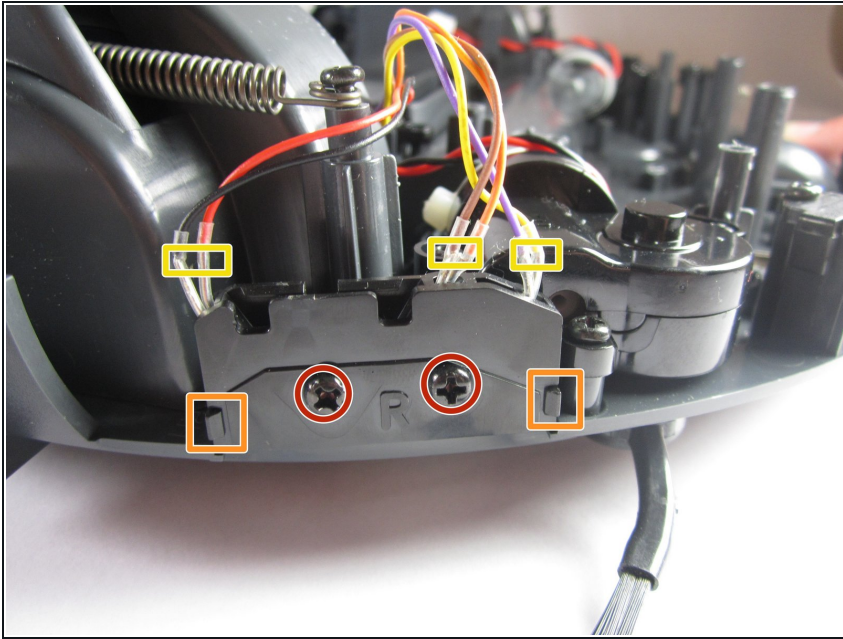
- Hold the front bumper and pull it off.
- ⓘ It requires a lot of force to pull the bumper off.

Step 5



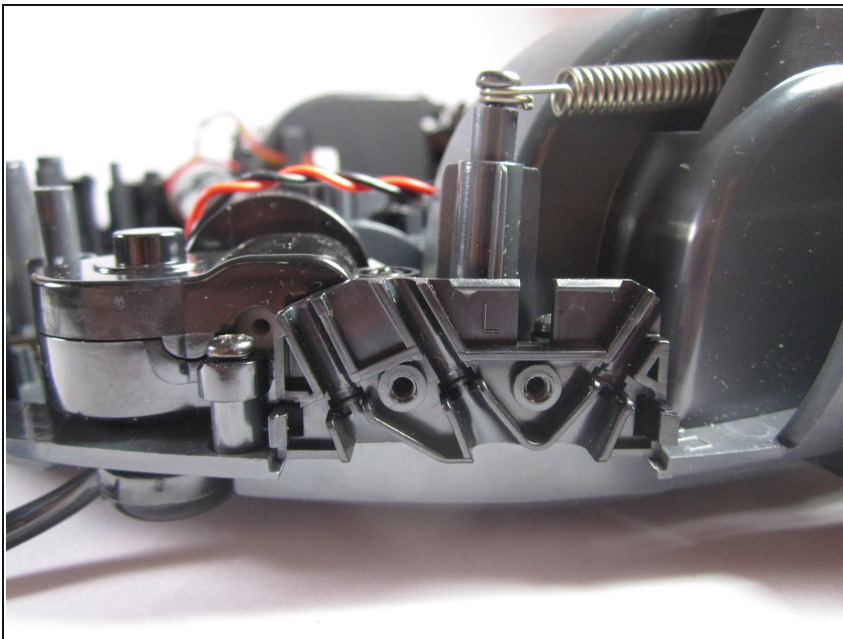
- Pry off the back bumper by going around the entire top of the bumper with the metal spudger.

Step 6 — Side Brush Motor



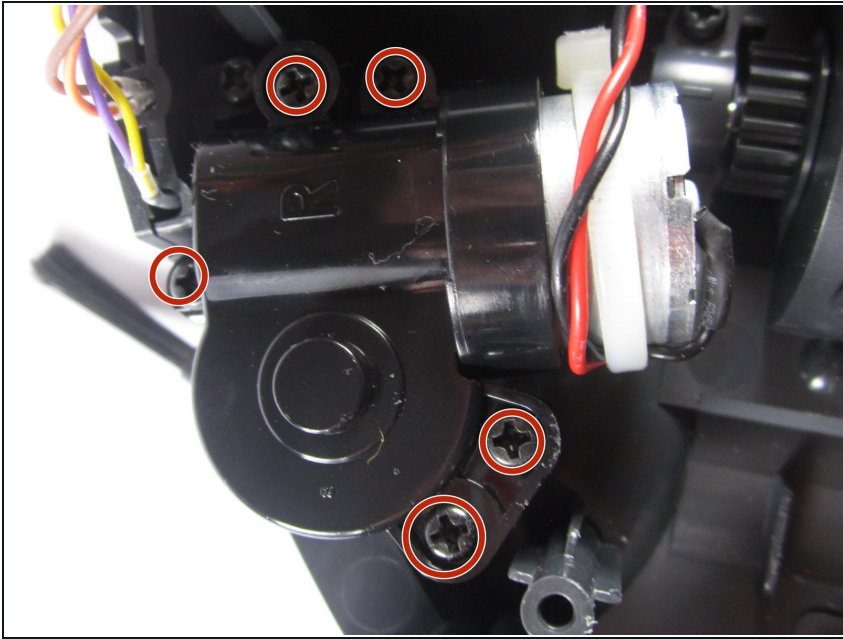
- Begin by unscrewing the 2 10mm screws using a Phillips #1 screwdriver.
 - Unlatch the latches indicated. It can be easily done with your finger.
 - Once unsecured, the covering for the sensors can easily be removed allowing access to the sensors.
- ⓘ The reason for these first few steps is to avoid damaging the signal wires for the sensor.

Step 7



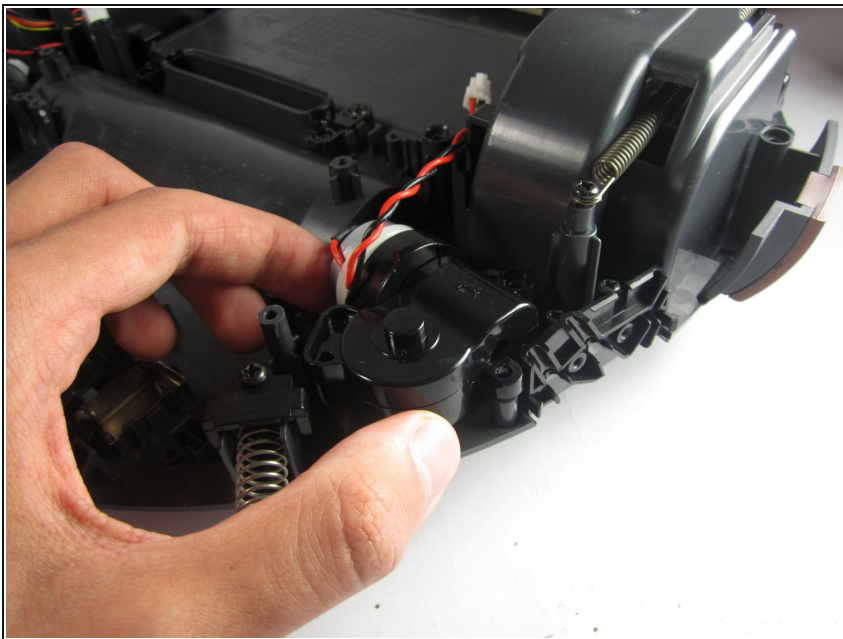
- This step just shows you how everything looks after the previous steps were completed.
- ⓘ There are sensors on both the left and right side. This can be done for either side.

Step 8



- Unscrew the five 10mm screws using a Phillips #1 screwdriver.

Step 9



- The side brush motor can now be removed by lifting it up.

To reassemble your device, follow these instructions in reverse order.