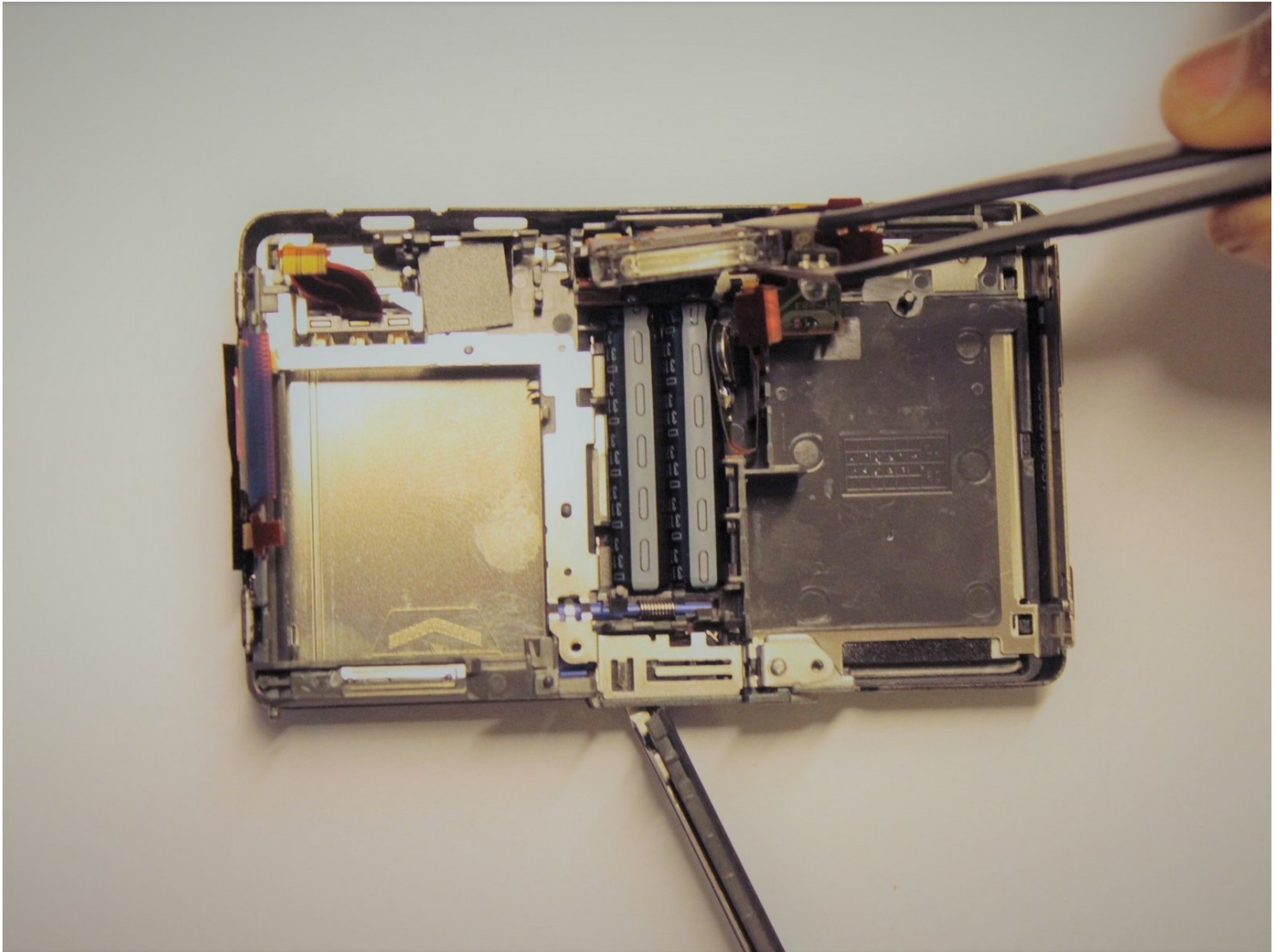




Sony Cyber-Shot DSC-TX9 Flash Replacement

This repair will solve any problems related to...

Written By: Yegor Shea



INTRODUCTION

This repair will solve any problems related to flash malfunctions. For example if the flash is not responding or the flash is not as bright as it should be, this repair will fix these issues.

TOOLS:

Spudger (1)

Phillips #0 Screwdriver (1)

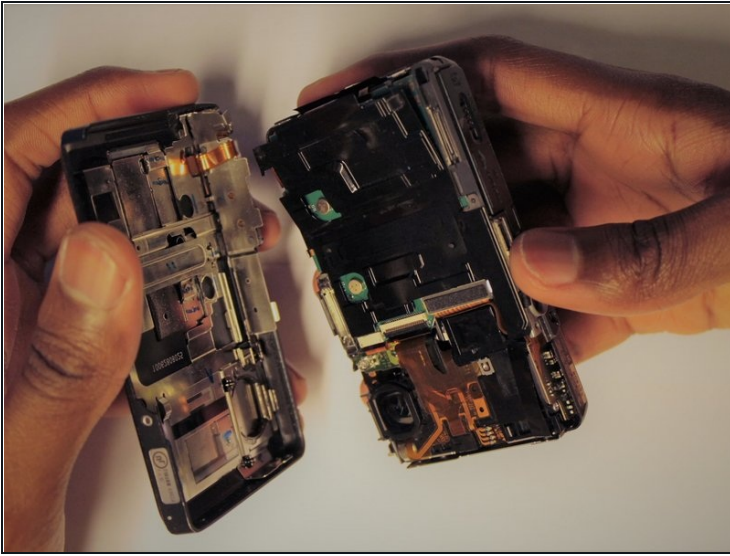
Tweezers (1)

Step 1 — Prerequisites Only



- Use a Phillips #0 screwdriver to unscrew the six 2mm screws on the outer case of the camera.
- ☑ If there is a battery or SD card inside remove before beginning the process.

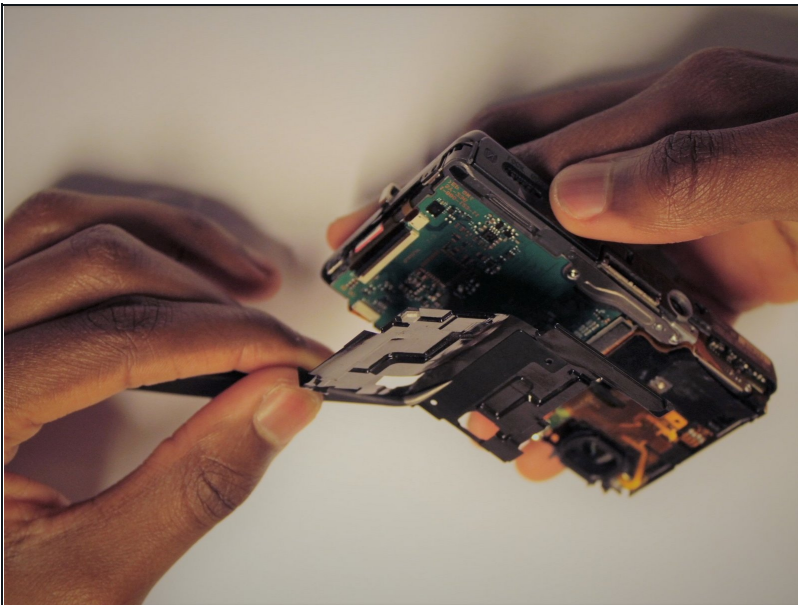
Step 2



- Use your hands or a Spudger to Pull off the front cover of the camera.

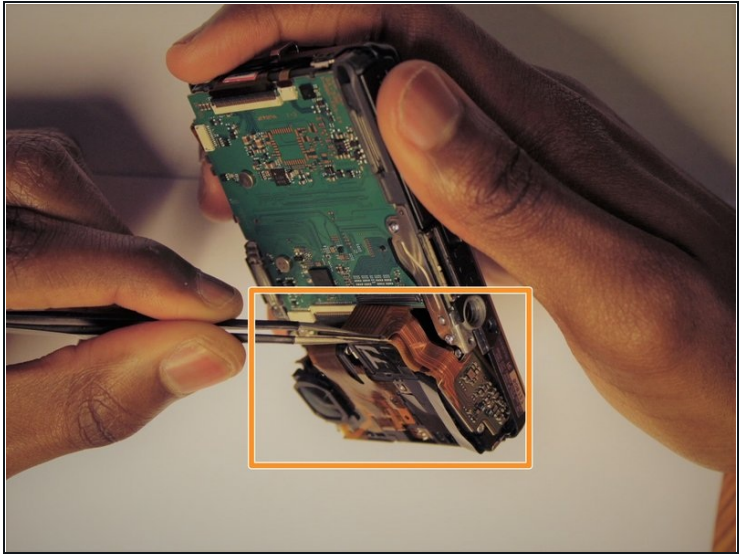
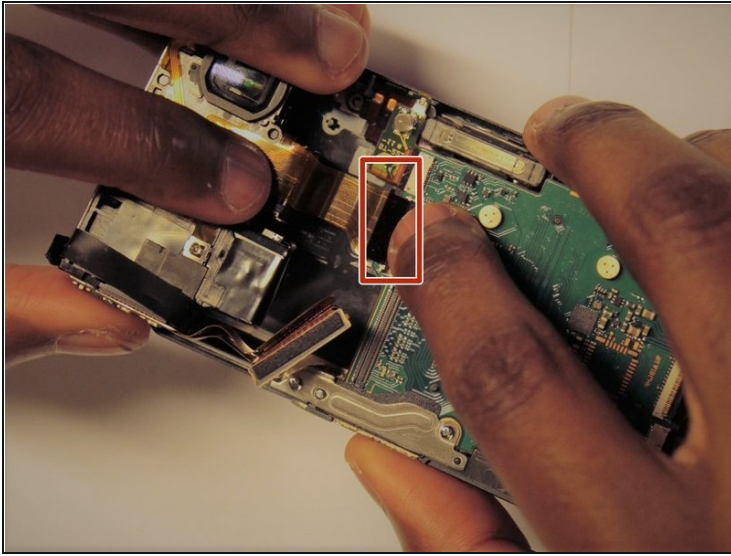
⚠ If the casing is not coming apart easily, do not force it.

Step 3



- Remove the protective black cover layer with your hands and set it aside.
- ① The use of [tweezers](#) may be necessary if the cover is difficult to remove.

Step 4

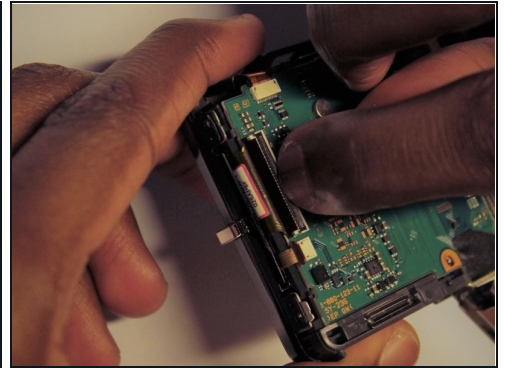
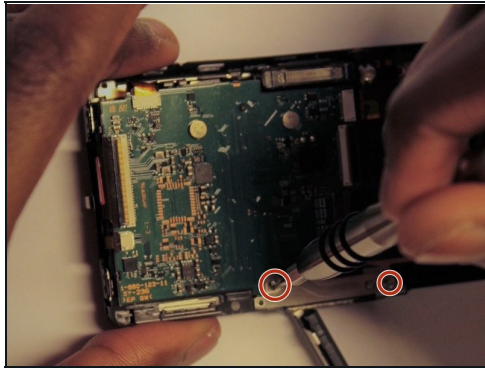
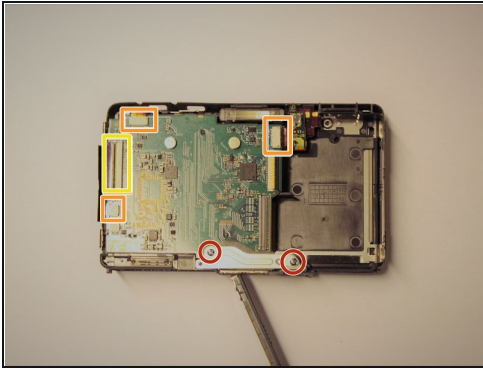


- The ZIF connector can be removed by flipping the small black holder into the upright position and then sliding the ribbon cable out carefully.
- Once this has been done, use tweezers to unplug the flat topped connector for the lens' circuit board from the motherboard.

⚠ DO NOT force the ribbon cables or they will rip.

i Refer to the ([Recognizing & Disconnecting Cable Connectors](#)) page for assistance.

Step 5 — Flash

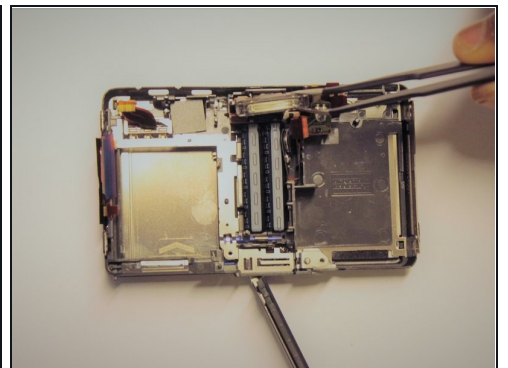
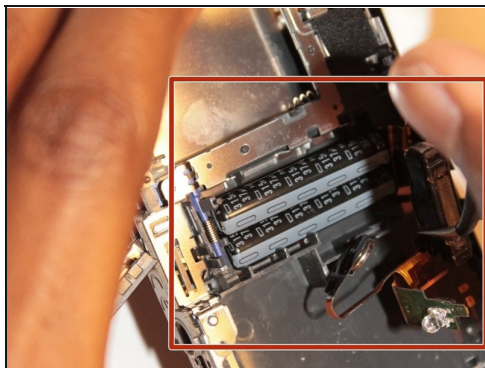
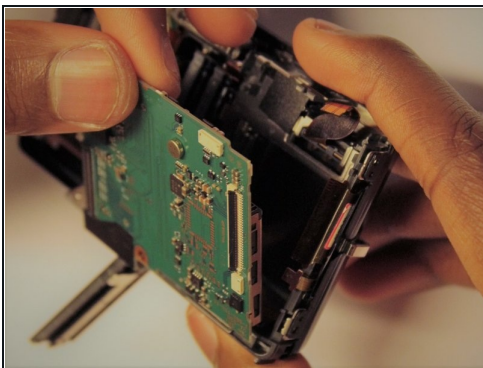


- Remove the two screws for the metal plate on the bottom.
- Detach the no fuse ribbon cables by sliding them out.
- Detach the ZIF connector cables by flipping the small black holder in an upright position and then sliding the cable out carefully.

⚠ Remove ribbons slowly and carefully or they **WILL** rip.

ⓘ Screws are of Phillips type, head size Y0 and 0.3 mm in length.

Step 6



- Carefully remove the Memory card circuit board. You will then be able to see the flash with the capacitors connected.
- Using [tweezers](#), carefully remove the components. They are all connected together.

⚠ The circuit board should come out with little force. If it does not, make sure all connections are disconnected.

To reassemble your device, follow these instructions in reverse order.