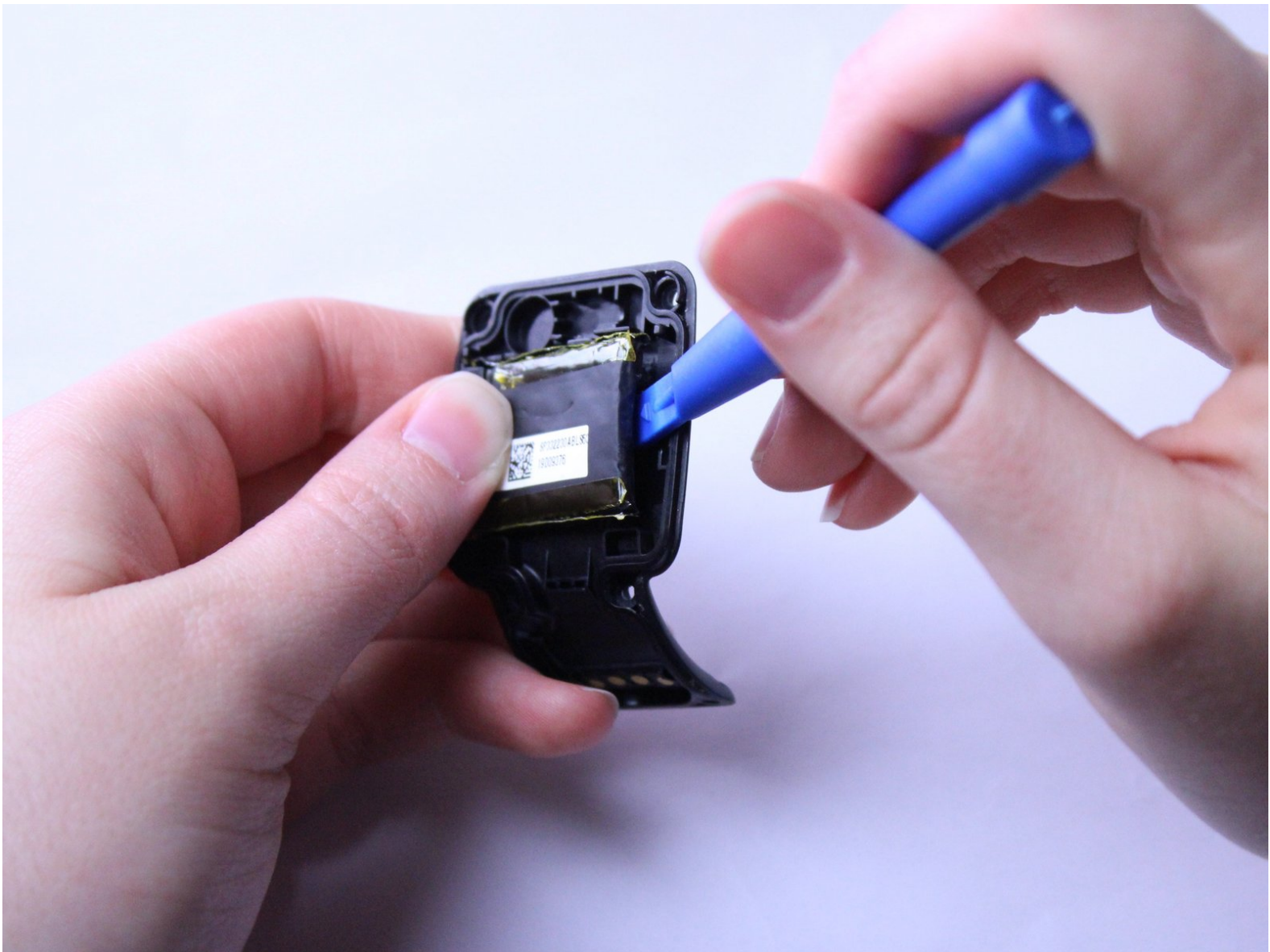




TomTom Runner Battery Replacement Guide

This guide shows you how to take apart your TomTom Runner watch so that you can replace the battery.

Written By: Amber Scarborough



INTRODUCTION

If the screen of your watch has an undamaged screen that won't light up or the battery won't keep its charge, then this replacement guide is what you need. It details how to take apart your TomTom Runner watch so that you can replace the entire battery. This guide is also useful for completely replacing the Back Panel.



TOOLS:

- [T5 Torx Screwdriver](#) (1)
 - [Heavy-Duty Spudger](#) (1)
 - [T4 Torx Screwdriver](#) (1)
 - [iFixit Opening Tools](#) (1)
-

Step 1 — Wristband



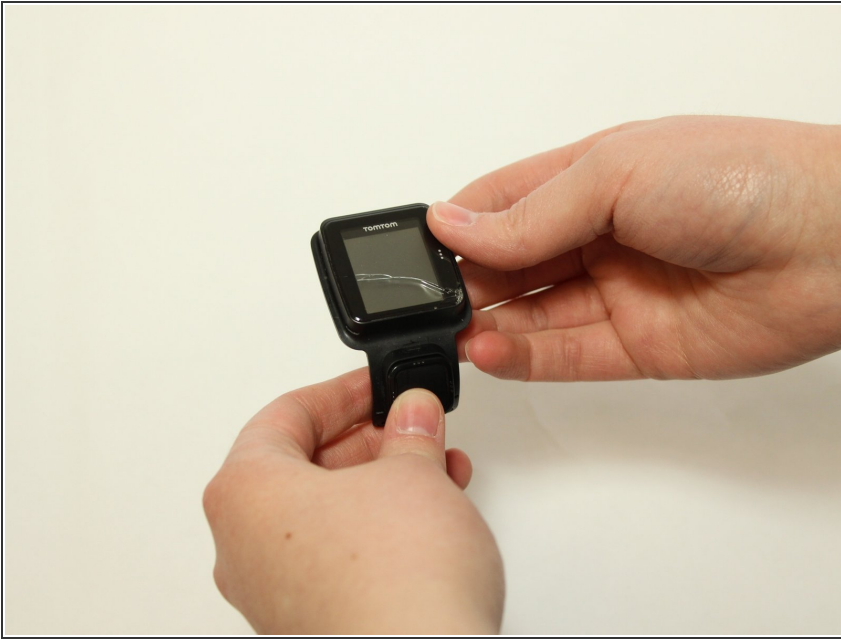
- First, lift the bottom part of the band to start removing the wristband from the button area of the watch.

Step 2



- Continue to lift up on the band until the screen of the watch becomes loose from the band.
 - ❗ You may need to apply a small amount of force downward on the face of the screen.
- Continue to pull up on the wristband until it is completely off the watch.

Step 3 — Back Panel



- Grab the watch once it is separated from the wristband.

Step 4



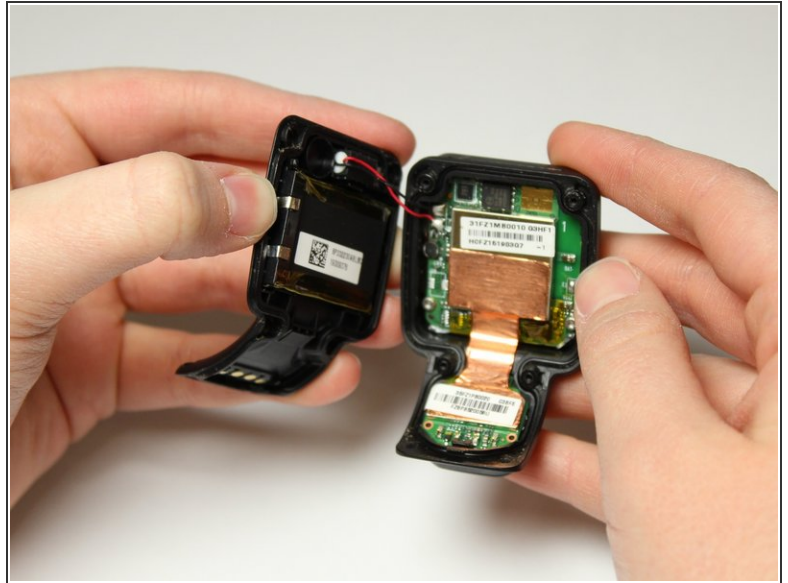
- Flip over the watch and remove the four 3.0 mm Torx head screws with a T4 Torx head screwdriver.

Step 5




- Remove the two 3.0 mm Torx screws from the front. Use a T4 Torx screwdriver to remove the screws.
- The two 3.0 mm Torx screws are painted blue at the end. These screws have screw holders around them that will also need to be removed.
- Unscrew the screws from the front of the watch casing and the screw holders fall out from the back of the watch casing.

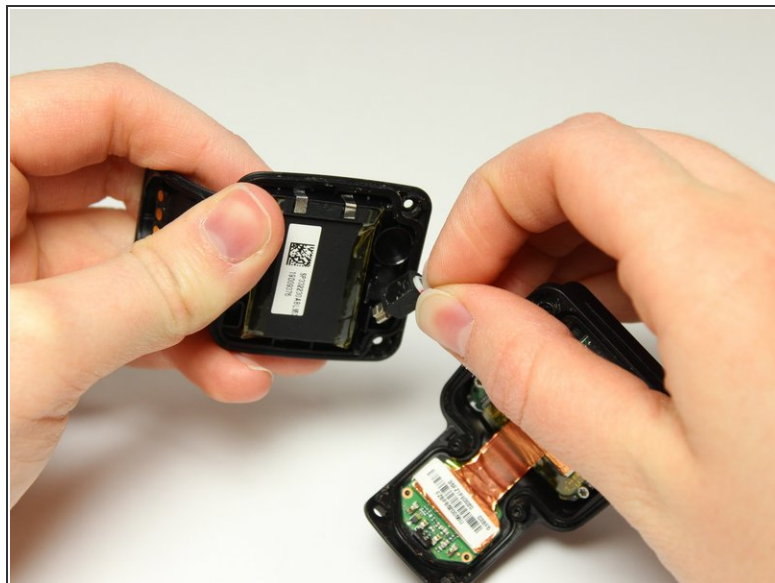
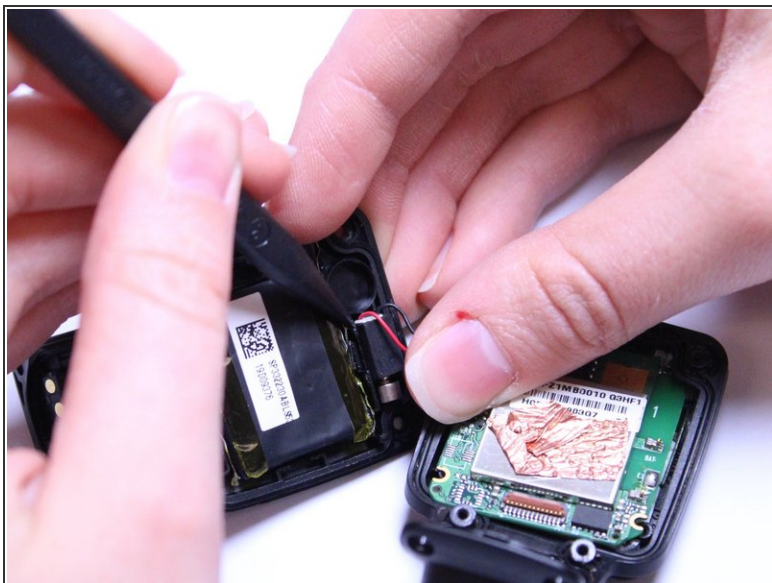
Step 6



- Gently pull the back panel away from the front panel.

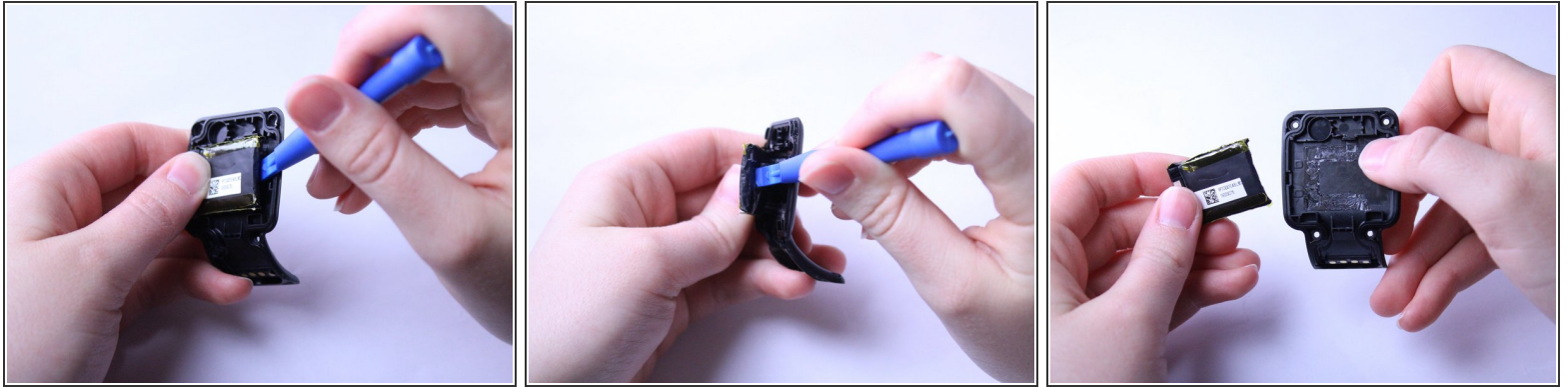
 Do not pull too fast or too hard. There are red and black wires connected to the vibrator component that should not be ripped.

Step 7



- Gently wiggle the black box vibrator component away from the back panel with your fingers or a Spudger tool.
 - ⚠ Be gentle with the red and black wires. You do not want them to rip or pop out.
- ⓘ The vibrator component is the small black box with the silver metal part at end. The black box is glued down, so it will take a little force to free it and it will be sticky.

Step 8 — Battery



- Grab the back panel and a blue, plastic opening tool to pry the black battery pack off the back panel.
 - ⓘ The battery pack is glued down, so it will be a bit sticky and harder to get off.
- After removing the battery, you are ready to replace it with a new one.
- If you need to replace the back panel, you are ready to take out the old battery and place it in the new back panel.

This guide is complete when you have successfully removed the battery from the back panel. To reassemble your device, follow these instructions in reverse order.