



Pacific Image Electronics CS3600 Button Spring Replacement

If the button has stopped working, this guide will show you step-by-step instructions on how to fix the spring.

Written By: Amber Berry



INTRODUCTION

Before beginning, please know that you will be completely taking apart the device in order to get to the button from the inside.



TOOLS:

- [JIS Driver Set](#) (1)
J0, J1
-

Step 1 — Button Spring



- Begin opening the device by unscrewing the 5 following 9mm x 7mm screws with a J1 screwdriver.

Step 2



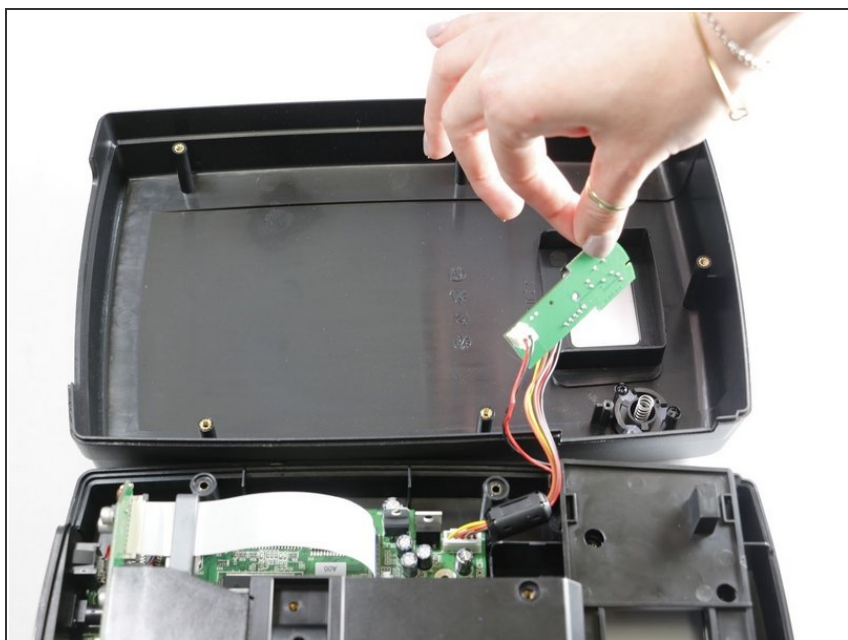
- Once the screws have been removed, with light force open the scanner by pulling it apart at the seam.

Step 3



- With a JIS J0 screwdriver remove the 1 screw that is 7mm x 6mm.

Step 4



- Lift and move the plate with the connected wires out of the way.

Step 5



- Remove the spring and replace it with a new one.

To reassemble your device, follow these instructions in reverse order.