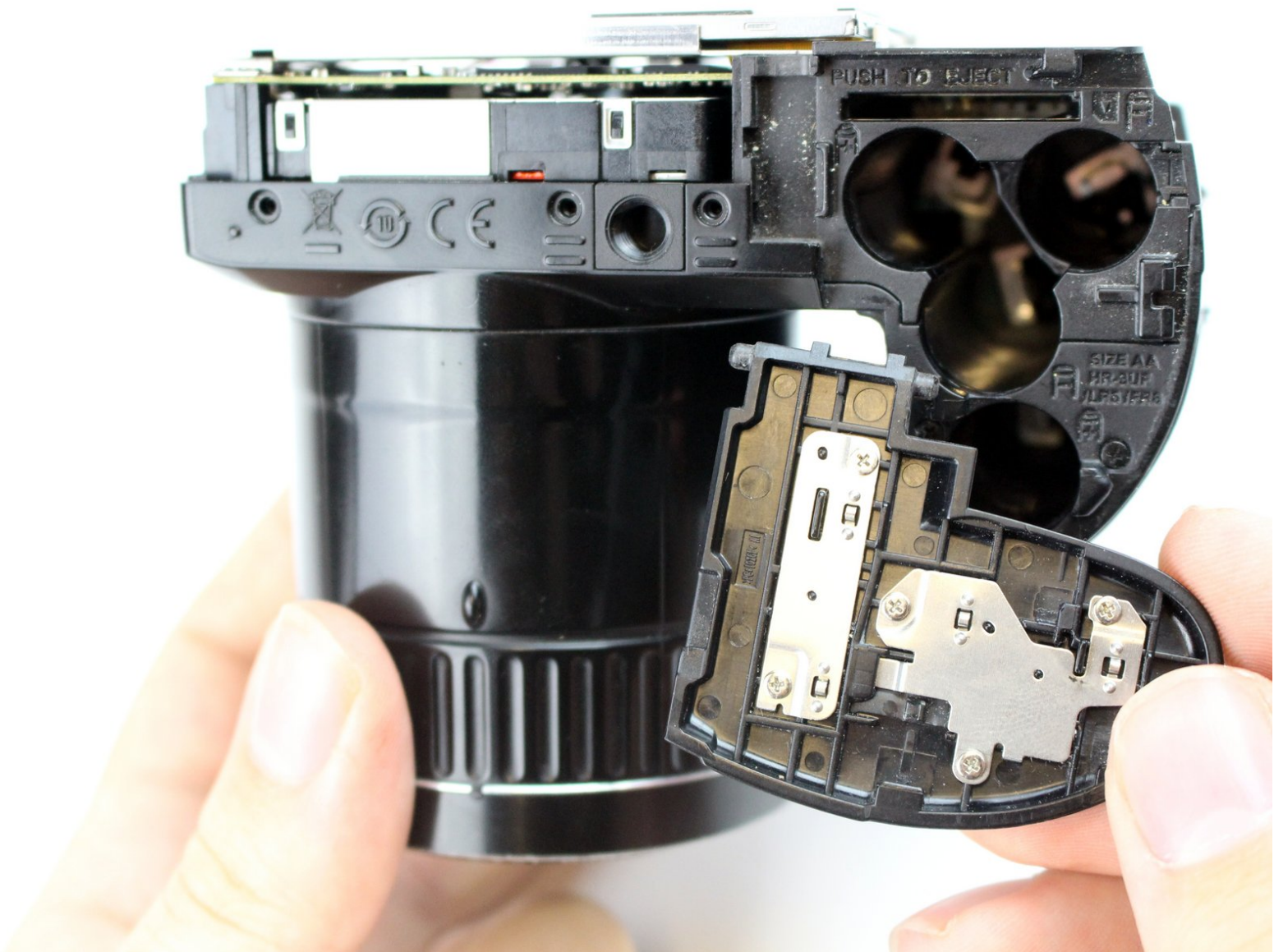




# Fujifilm FinePix S4800 Battery Compartment Door Replacement

This guide helps users to remove and replace the battery compartment door on the Fujifilm FinePix S4800. The door is located on the underside of the camera.

Written By: Lairhe Barreto Paez



---

## INTRODUCTION

In this guide, we will give you step-by-step instructions on how to replace the battery compartment door of the Fujifilm FinePix S4800. This involves taking off the rear plastic case of the camera by removing screws and using a plastic removal tool to separate the rear case from the rest of the camera.



### TOOLS:

- [iFixit Opening Tools](#) (1)
  - [JIS Driver Set](#) (1)
-

## Step 1 — Battery



- ❗ Make sure that the camera is powered off before continuing.
- Rotate the camera so that the label on the base of the camera is facing up.
- On the battery compartment door, there is a slider that says "open". Slide it down and push the door to the right to release the door.

## Step 2



- Remove all four batteries and set them aside.
- ★ When replacing the batteries, be sure to note the markings on the face of the battery compartment. These markings let you know which side of the battery ("+" or "-") needs to be facing up in each slot.

## Step 3 — Rear Case



- Remove the three 5.0 mm JIS #000 screws on the bottom of the camera.

## Step 4



- Rotate the camera so that the HDMI port is facing up.
- Remove the two 5.0 mm JIS #000 screws.



## Step 5



- Rotate the camera so that the text "30x superwide 24-720mm" is facing up.
- Remove the two 5.0 mm JIS #000 screws.

## Step 6




- Press the pop-up button highlighted in the picture to release the flash mechanism.
- Remove the two 5.0 mm JIS #000 screws highlighted in the picture.

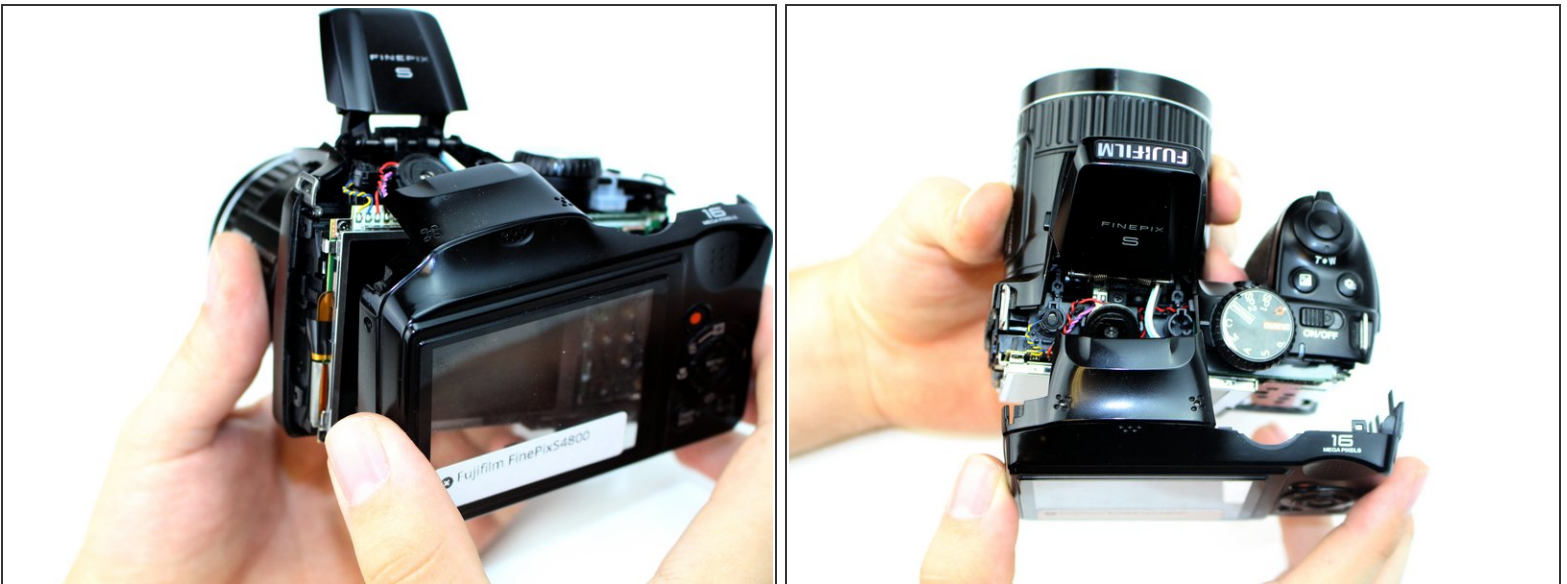
## Step 7



- Use a plastic opening tool to separate the rear case from the camera on each of the sides until the panel is completely separated.

 The plastic case is fragile, so take your time on each side making sure to pry each side evenly as you continue around the camera with the tool.

## Step 8



- Gently, remove the rear case from the camera and set it aside.

## Step 9 — Battery Compartment Door



- Once the rear case is removed, gently separate the battery compartment door from its position.

To reassemble your device, follow these instructions in reverse order.