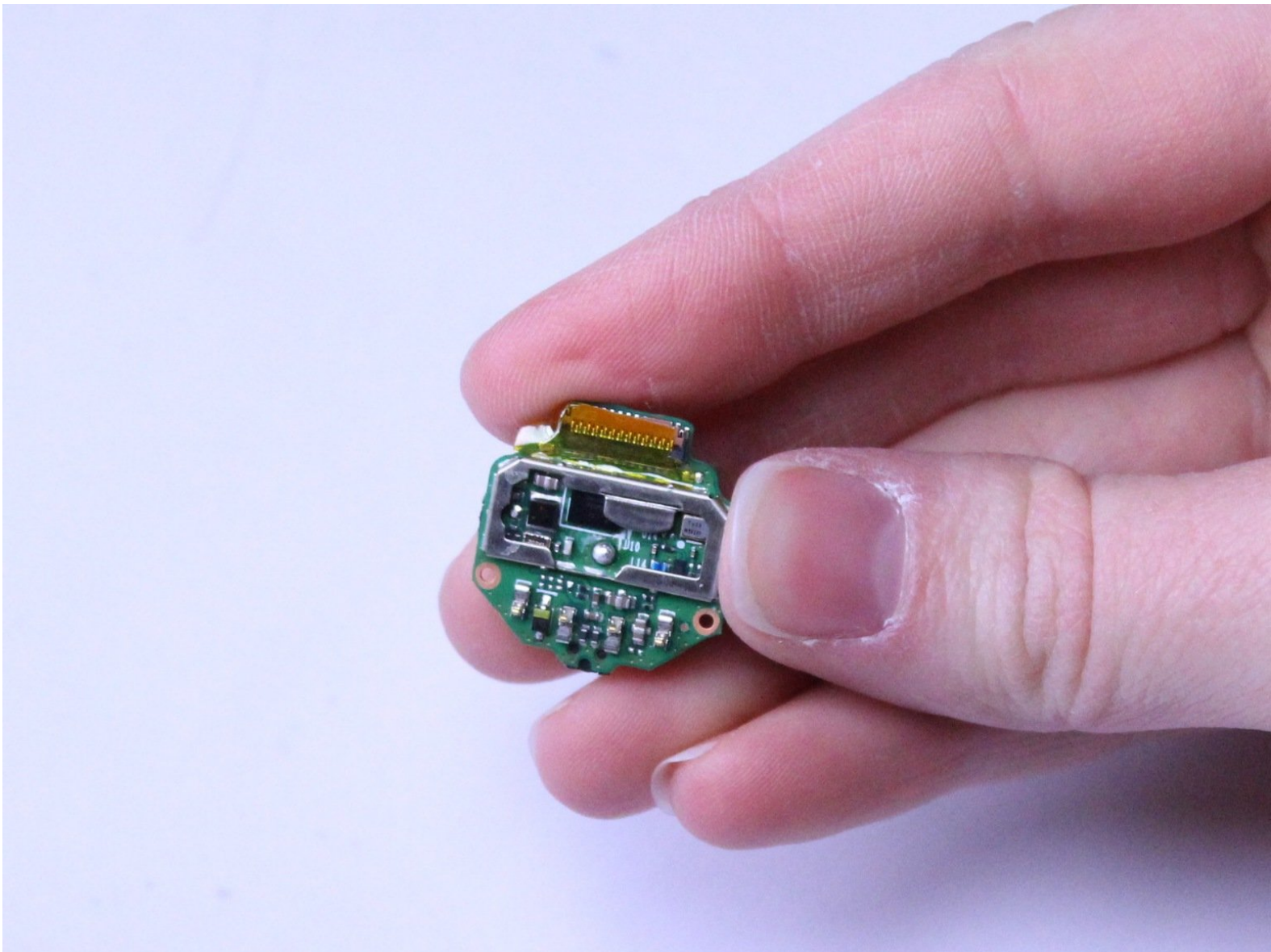




TomTom Runner GPS Component Replacement

This guide shows you how to open the TomTom Runner watch and how to expose the GPS component in order to replace it.

Written By: Amber Scarborough



INTRODUCTION

If the GPS function does not respond to you choosing it or it does not find your location after moving to an open area, this guide is what you need. You will find instructions for how to open the TomTom Runner watch and expose the GPS component to be able to replace it.



TOOLS:

- [T5 Torx Screwdriver](#) (1)
 - [Heavy-Duty Spudger](#) (1)
 - [T4 Torx Screwdriver](#) (1)
 - [Spudger](#) (1)
-

Step 1 — Wristband



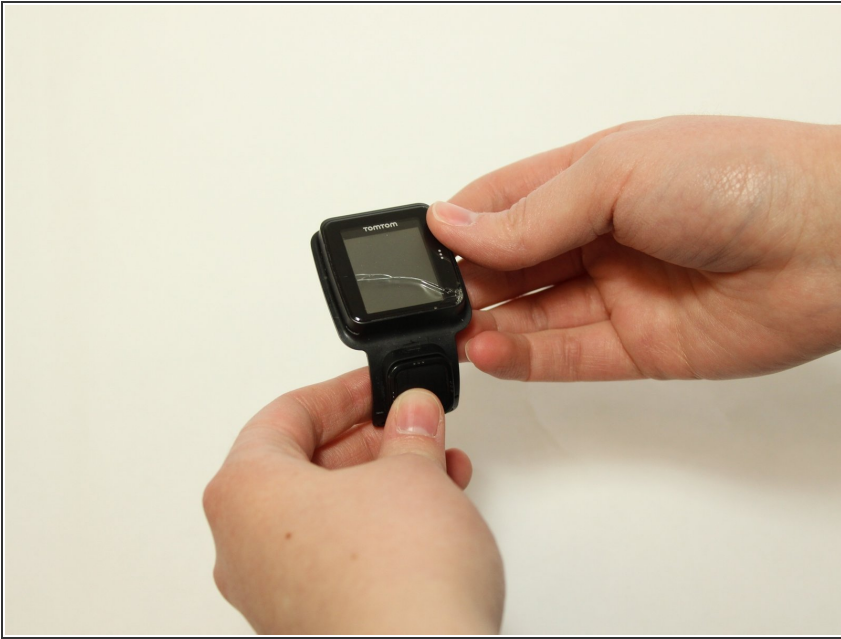
- First, lift the bottom part of the band to start removing the wristband from the button area of the watch.

Step 2



- Continue to lift up on the band until the screen of the watch becomes loose from the band.
 - ⓘ You may need to apply a small amount of force downward on the face of the screen.
- Continue to pull up on the wristband until it is completely off the watch.

Step 3 — Back Panel



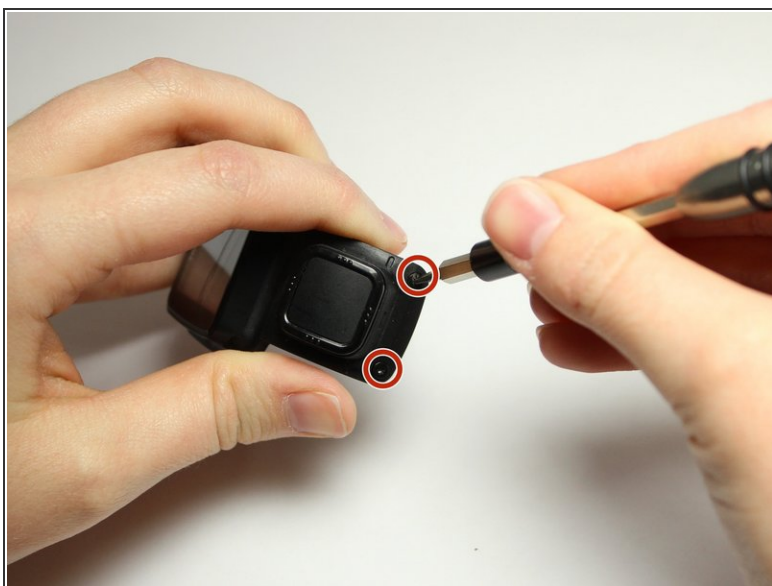
- Grab the watch once it is separated from the wristband.

Step 4



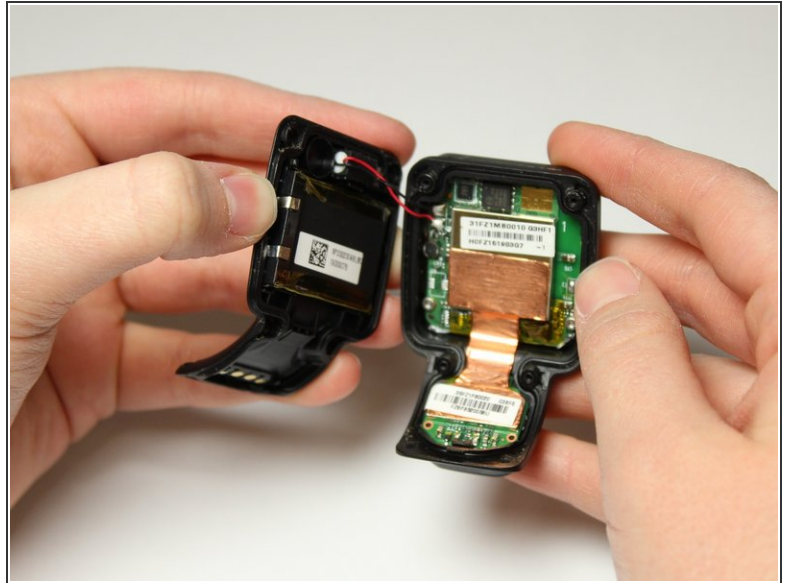
- Flip over the watch and remove the four 3.0 mm Torx head screws with a T4 Torx head screwdriver.

Step 5




- Remove the two 3.0 mm Torx screws from the front. Use a T4 Torx screwdriver to remove the screws.
- The two 3.0 mm Torx screws are painted blue at the end. These screws have screw holders around them that will also need to be removed.
- Unscrew the screws from the front of the watch casing and the screw holders fall out from the back of the watch casing.

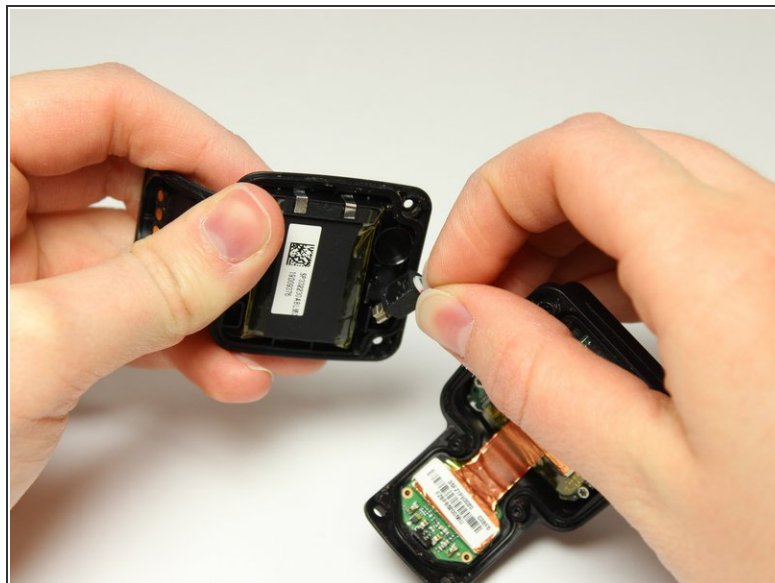
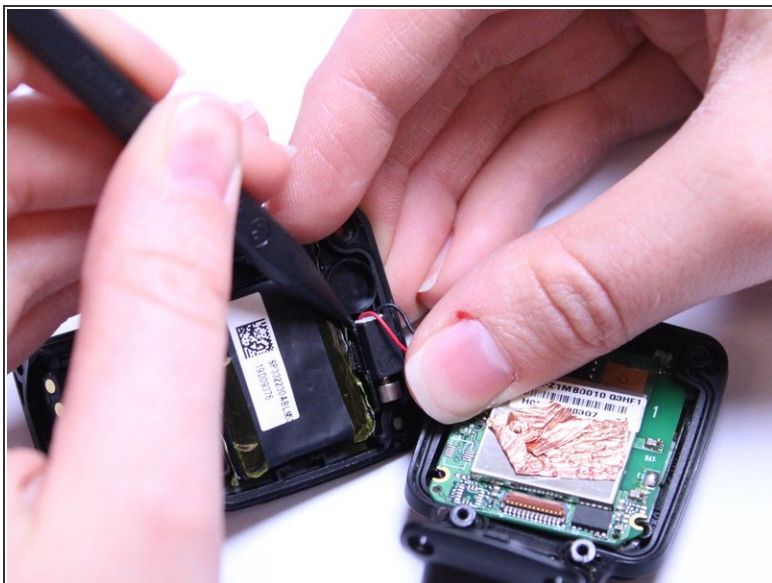
Step 6



- Gently pull the back panel away from the front panel.

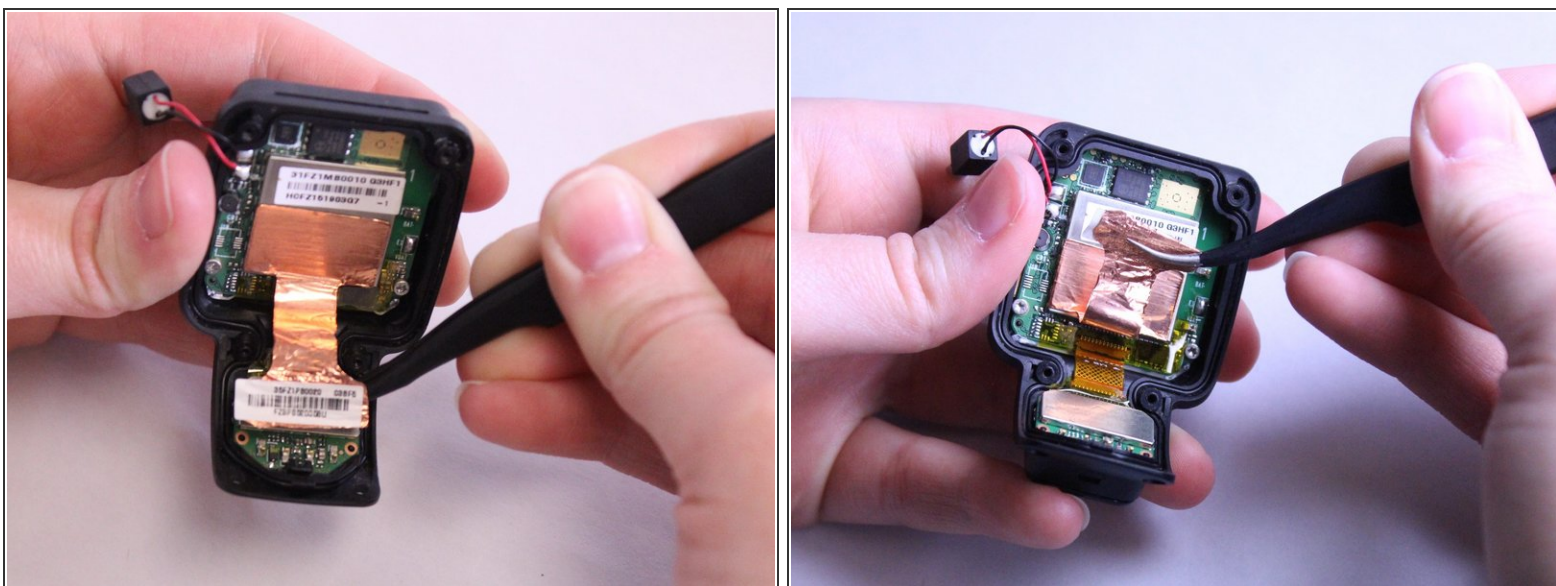
 Do not to pull too fast or too hard. There are red and black wires connected to the vibrator component that should not be ripped.

Step 7




- Gently wiggle the black box vibrator component away from the back panel with your fingers or a Spudger tool.
 - ⚠ Be gentle with the red and black wires. You do not want them to rip or pop out.
- ⓘ The vibrator component is the small black box with the silver metal part at end. The black box is glued down, so it will take a little force to free it and it will be sticky.

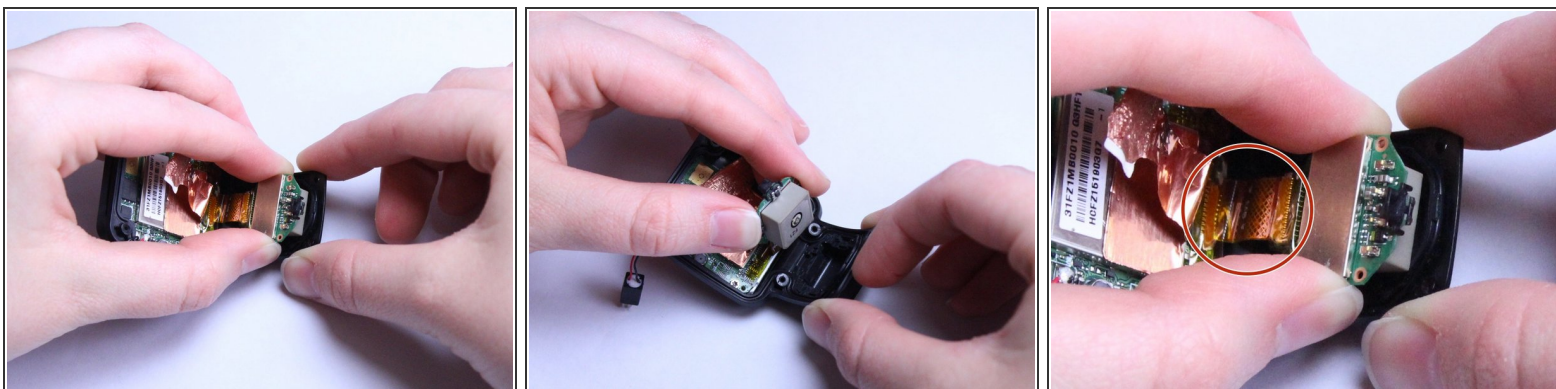
Step 8 — GPS Component



- Now lift the smaller square of copper off the front panel. Use the precision tweezers and slide it under the smaller square of copper lining then gently lift it up.

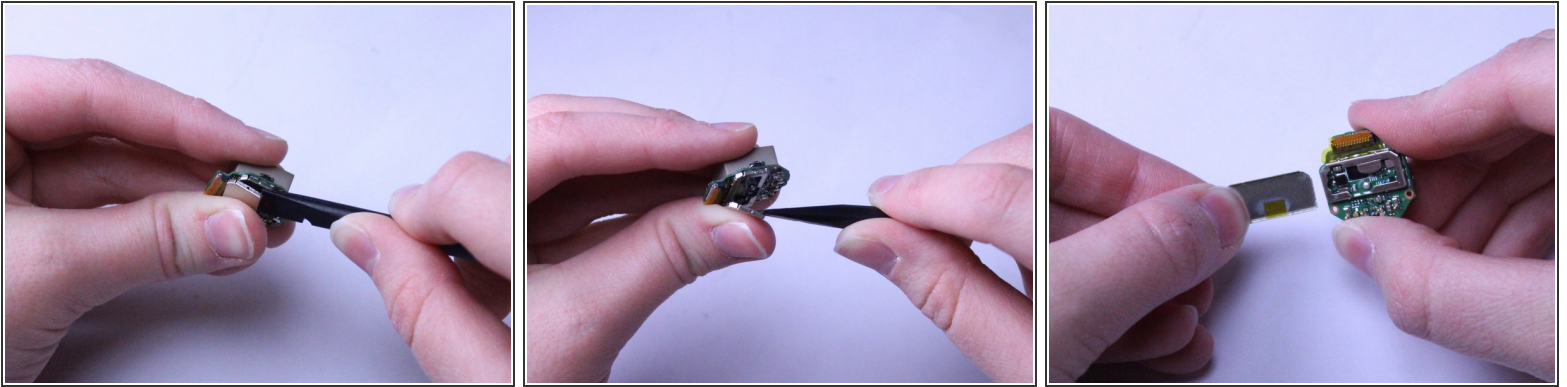
 You will need to be gentle and pull the copper slowly so that it does not rip.

Step 9



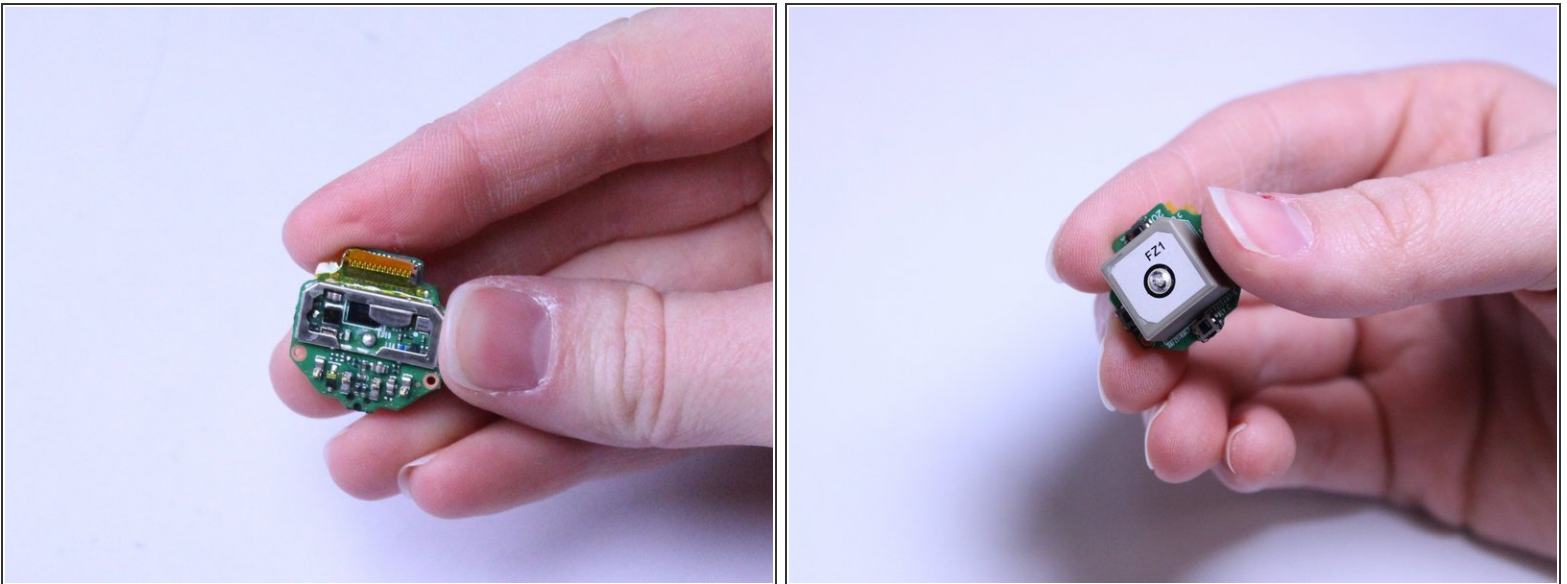
- Use your fingers to gently grab and lift the small square piece to remove the GPS and button component completely from the casing.
- Disconnect the ZIF Connector from the larger green motherboard.
 - The ZIF Connector is the flat, orange cable connecting the small green motherboard to the larger motherboard. It is meant to come apart at the port located on the larger motherboard. You will feel like you have broken it when it is disconnected. That is okay!

Step 10



- Get the GPS/Button Component by itself and use the Spudger tool to lift the silver cover off the GPS Component. This will expose the GPS Component.

Step 11



- Once the GPS Component cover is off and the GPS Component is exposed, you are ready to replace it.
- ⓘ The GPS Component is the entire square, grey box piece with the green motherboard attached to it.

To reassemble your device, follow these instructions in reverse order.