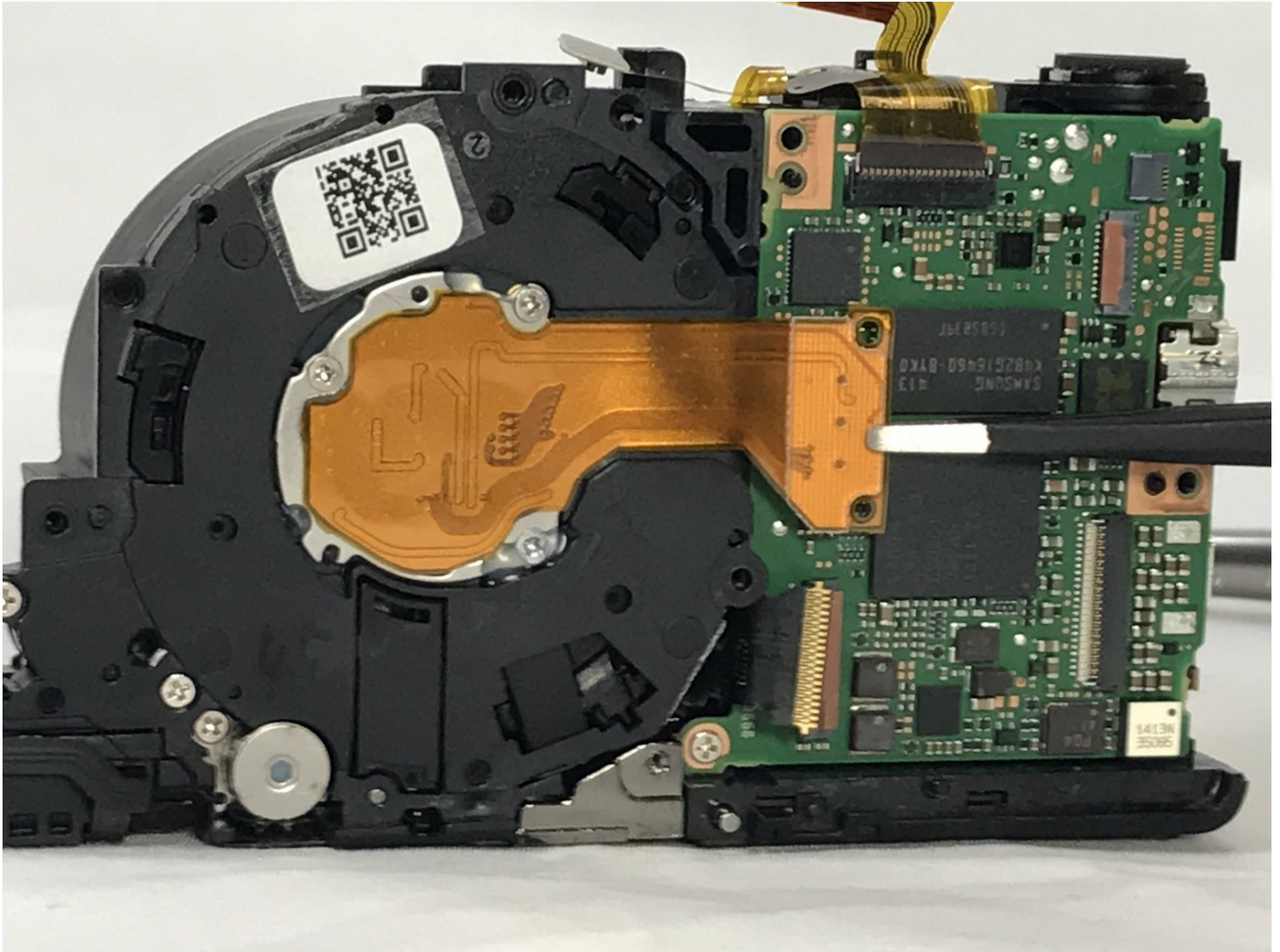




# Canon PowerShot SX600 HS Lens Piece Replacement

When your lens isn't working, your camera isn't...

Written By: Scott Childress



# INTRODUCTION

When your lens isn't working, your camera isn't working. Follow this guide to fix your troubles and get back to taking photographs.

---

## TOOLS:

[Phillips #000 Screwdriver](#) (1)

[iFixit Opening Tool](#) (1)

[ESD Safe Blunt Nose Tweezers](#) (1)

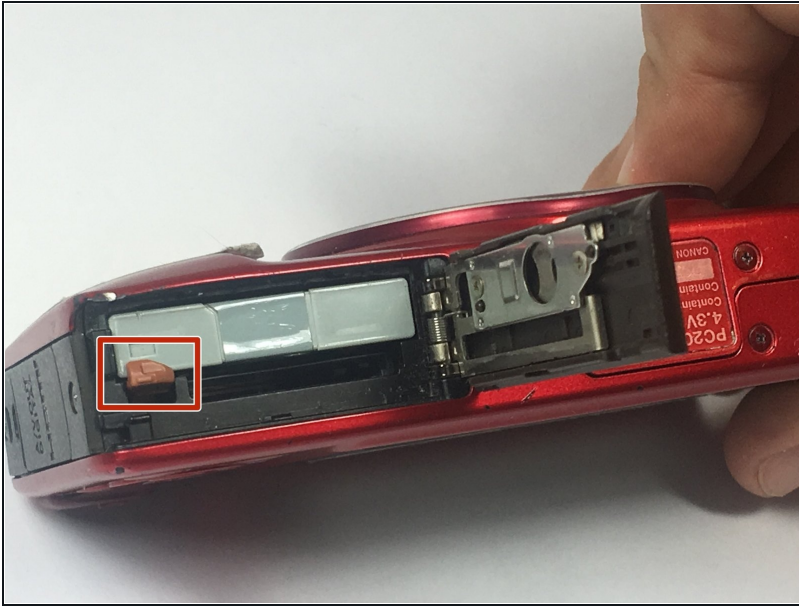
---

## Step 1 — Battery



- To remove the battery, locate the battery cover on the bottom of the camera.
- Using your thumb, press down on the cover and slide it outwards.

## Step 2



- Depress the orange lever holding the battery in place to unlock it.

## Step 3



- Use your fingers to remove the battery.
- ☒ Be sure to remember the alignment of the nodes for reassembly.



## Step 4 — Power and Shutter Buttons



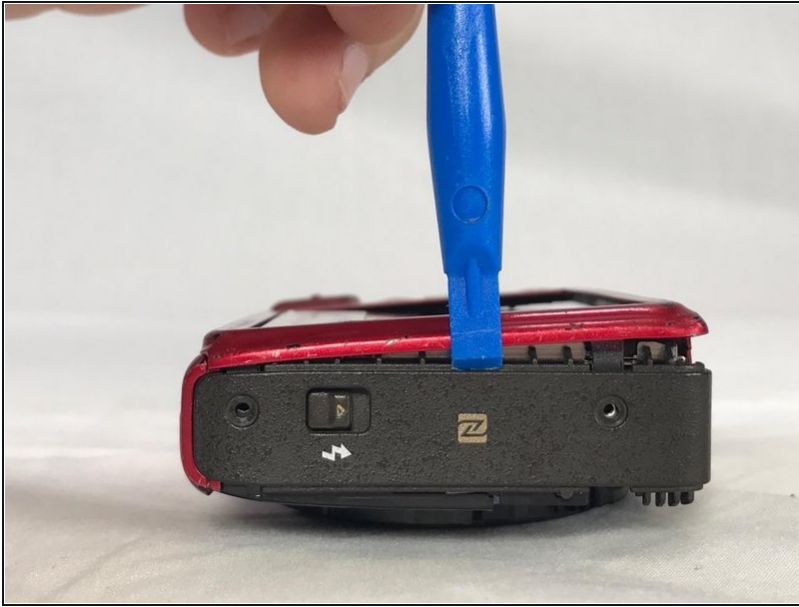
- Use a #000 Phillips screwdriver to unscrew the four 4mm screws located on the sides of the camera (2 for each side).

## Step 5



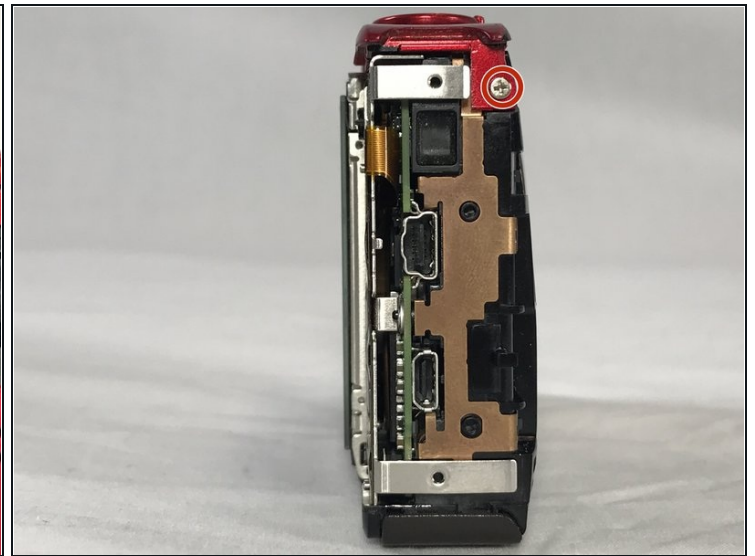
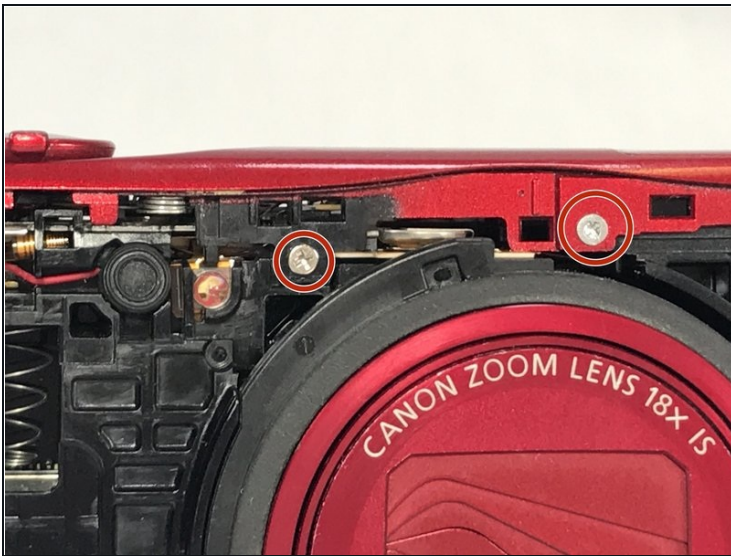
- Unscrew the four 2mm located on the bottom of the camera using a Phillips #000 screwdriver.

## Step 6



- Use a plastic opening tool to loosen and remove both the front and back plates of the camera, as well as the two side pieces.

## Step 7



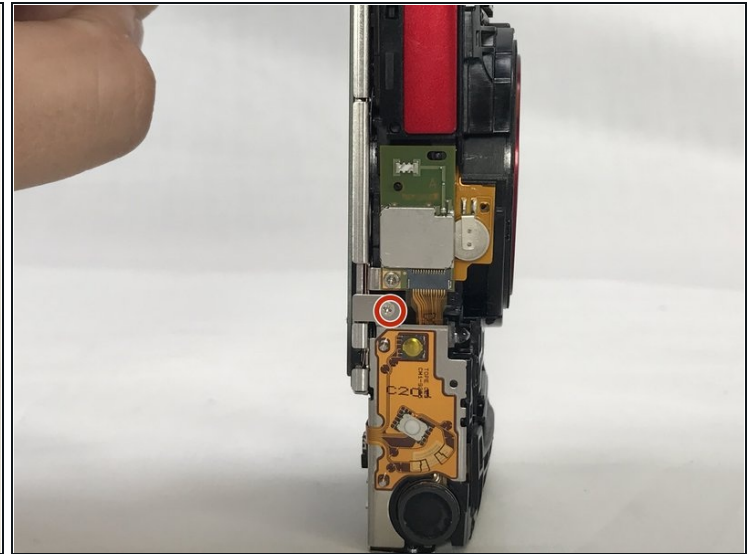
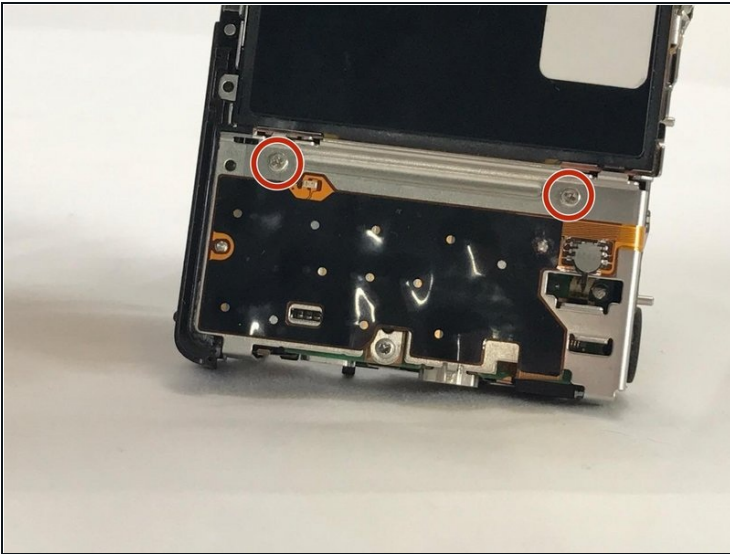
- Unscrew the three 2mm screws attaching the piece to the camera frame with a #000 Phillips screwdriver.

## Step 8



- Use an opening tool to gently remove the power and shutter button assembly from the frame.

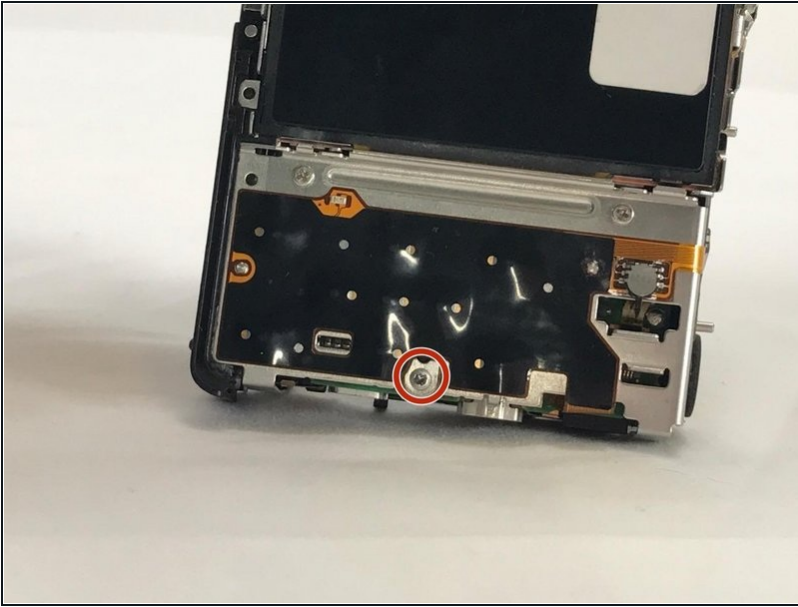
## Step 9 — Display Screen



- Unscrew the 2mm screw connections of the main board protector from the camera frame using a #000 Phillips head screwdriver (2 on front, 1 on top)

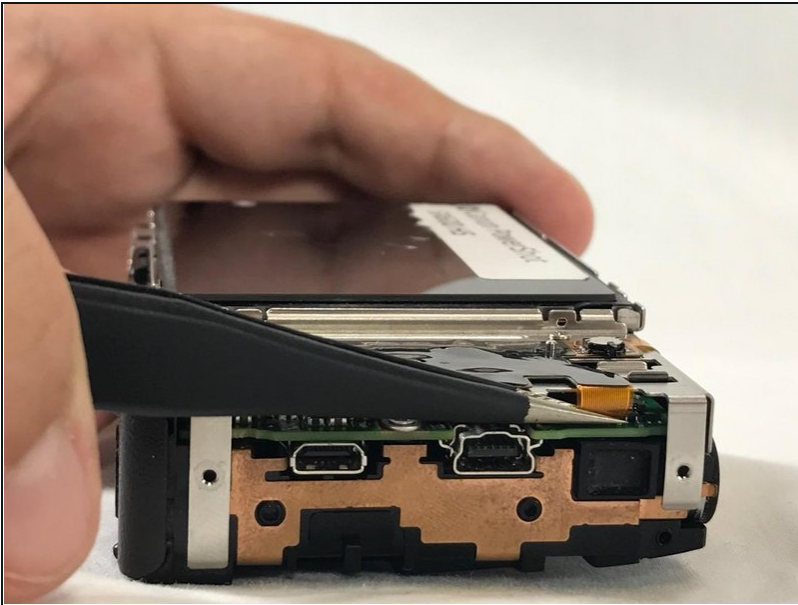


## Step 10



- Use a Phillips #000 screwdriver to unscrew the 4mm screw.

## Step 11



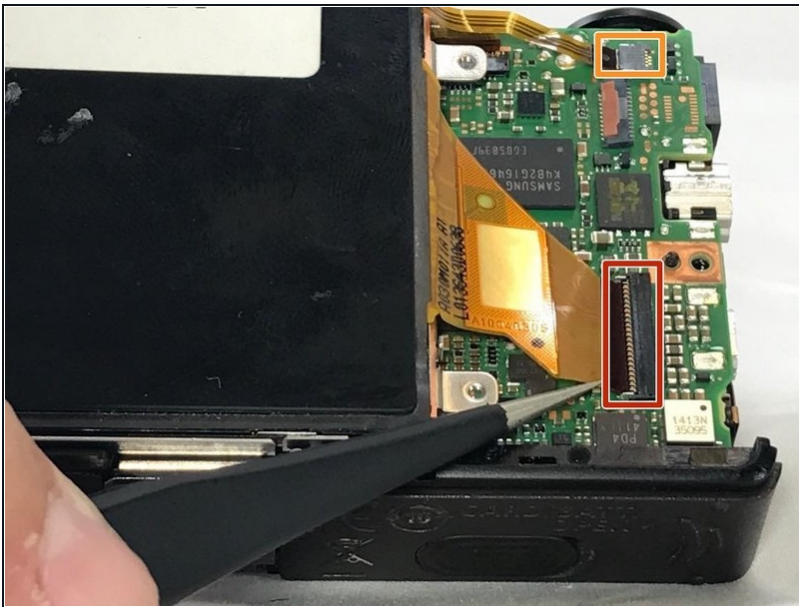
- Use a pair of [tweezers](#) to remove the no-fuss connector from its holder.

## Step 12



- Gently lift the protector from the frame.

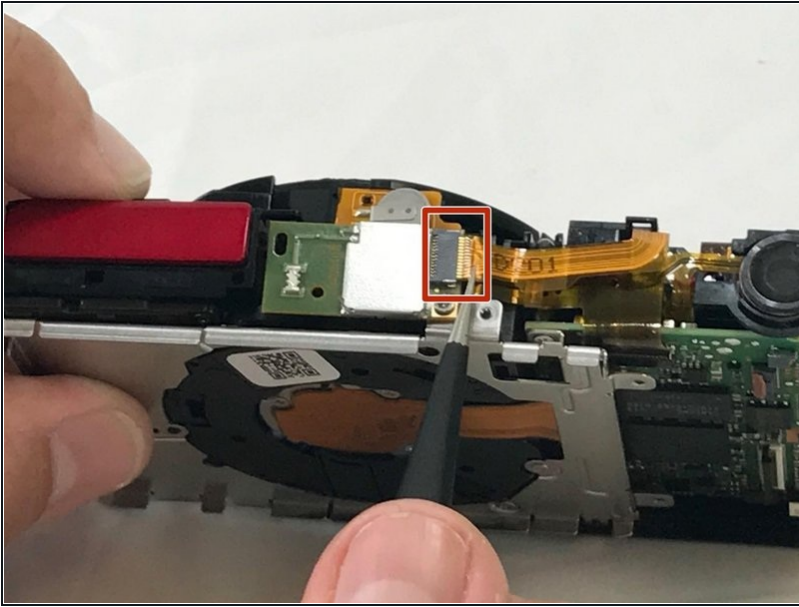
## Step 13



- Lift the LCD screen ZIF connector tab and remove the ribbon cable.
- Detach the no-fuss connector.
- Lift the screen from its holder.

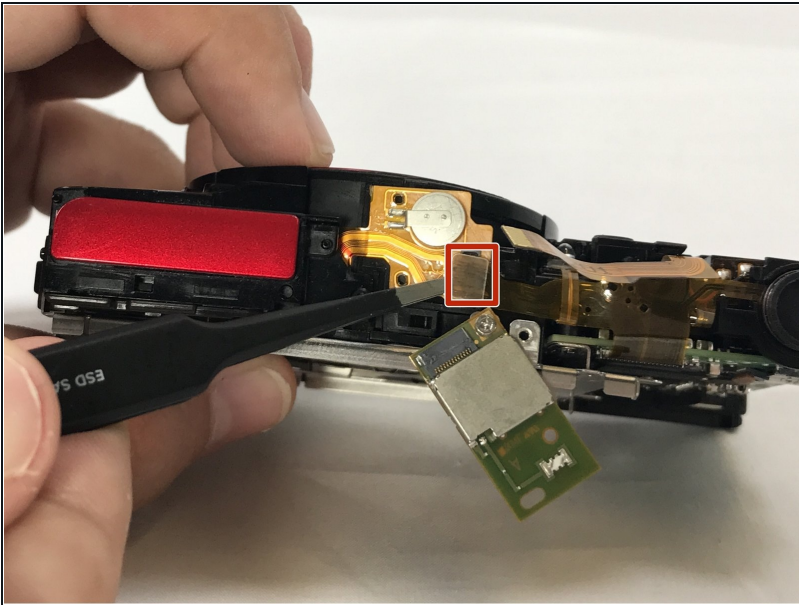


## Step 14 — Flash Assembly



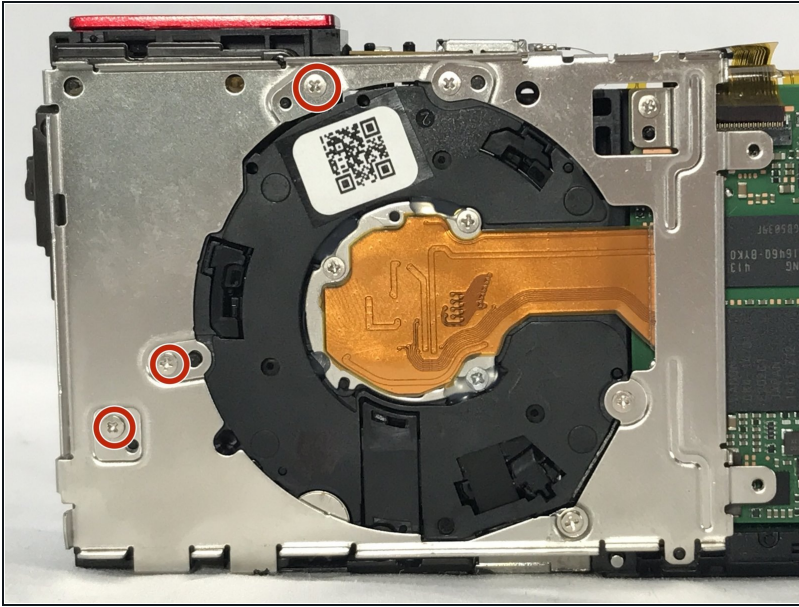
- Unplug the assembly from the main no-fuss connector.

## Step 15



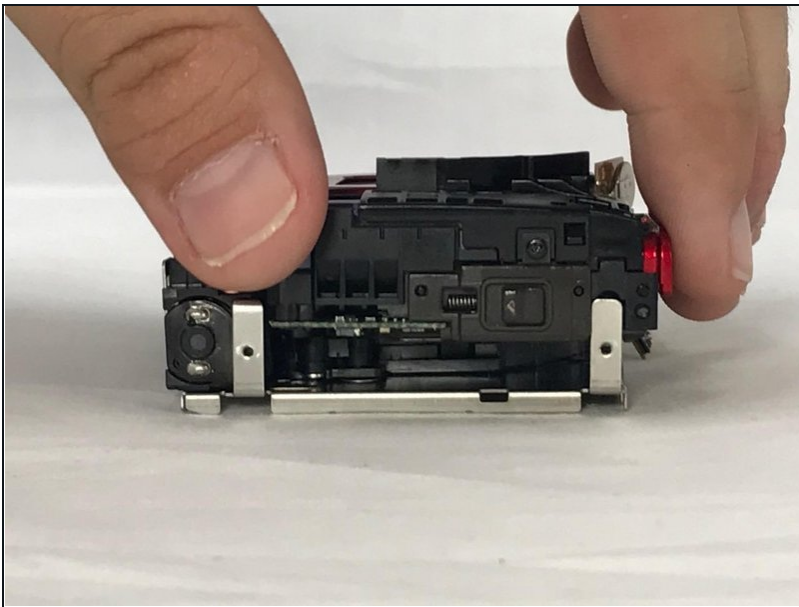
- Unplug the assembly from its flat-top connection.

## Step 16



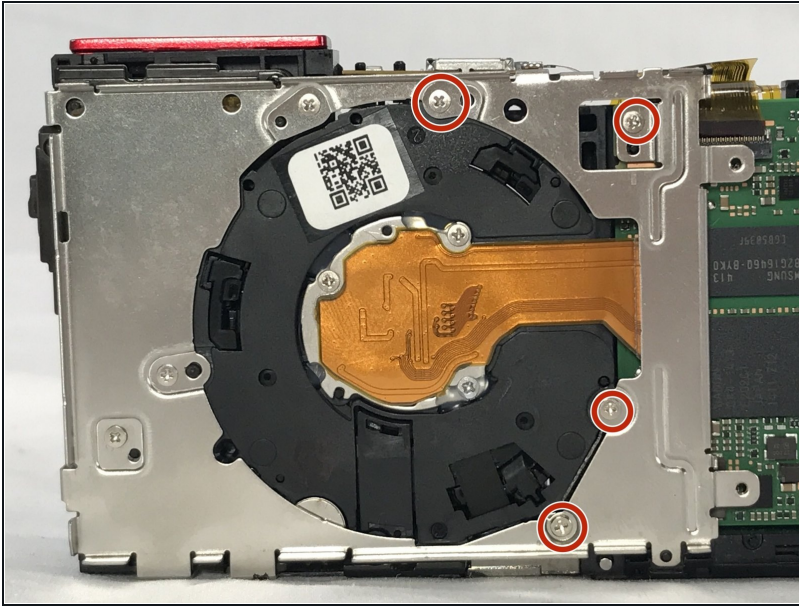
- Use a #000 Phillips screwdriver to remove the three 4mm screws that hold the assembly to the frame.

## Step 17



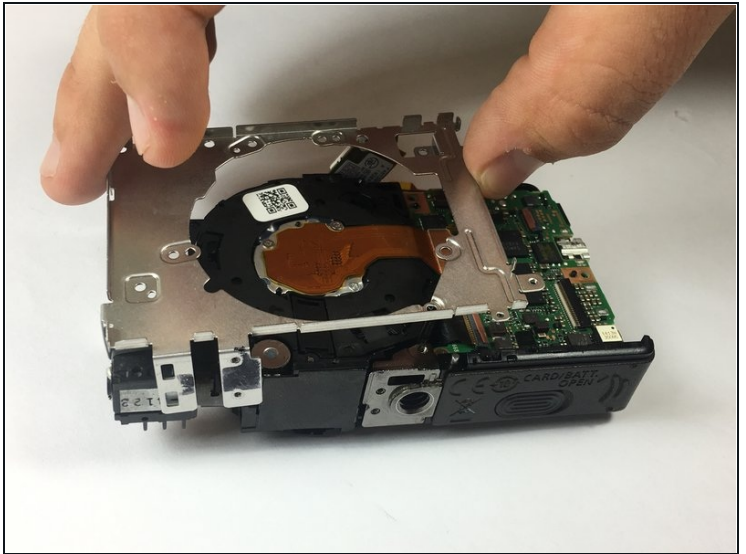
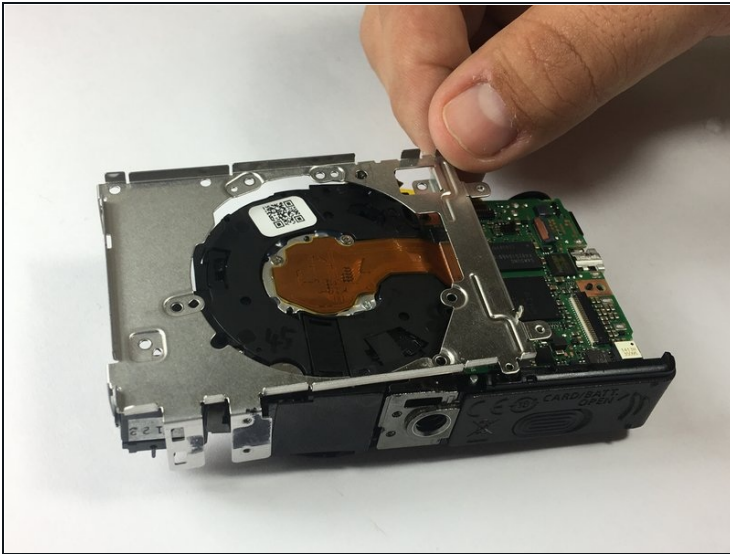
- Gently lift the assembly out of its place.

## Step 18 — Lens Piece



- Remove the 4 remaining 4mm screws in the frame with a Phillips #000 screwdriver.

## Step 19

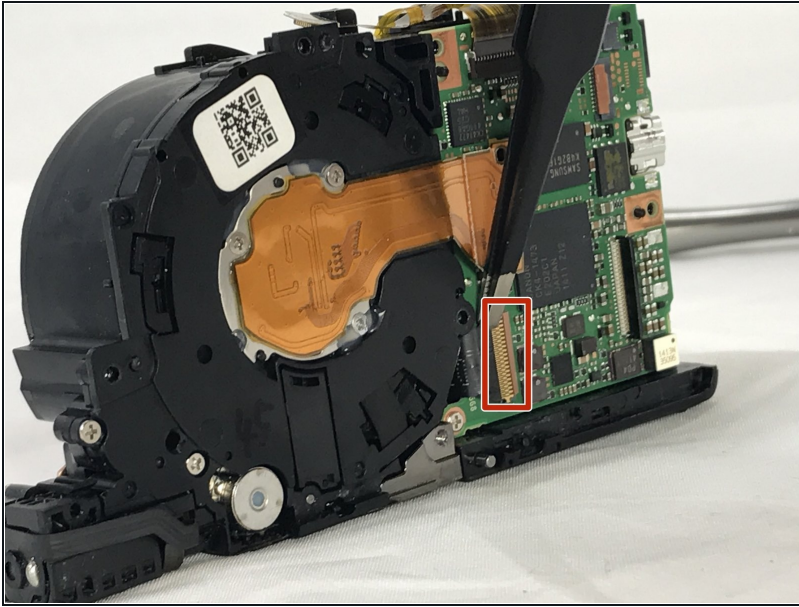


- Gently remove the frame. (Make sure to have a firm hold on the rest of the camera at this point)

⚠ The camera will be loose after this point. Be sure to have a firm hold on it.

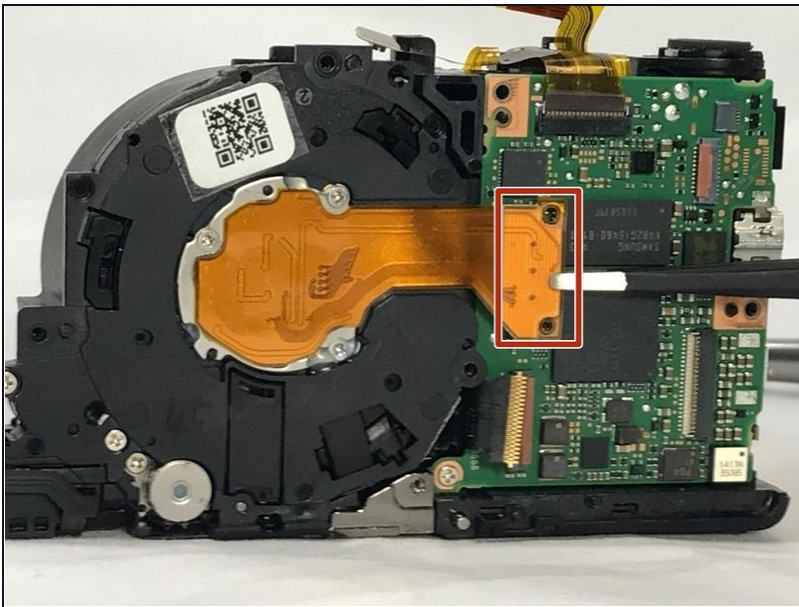


## Step 20



- Unplug the ZIF connection between the lens to the main processor.

## Step 21



- Detach the flat-top connection.

To reassemble your device, follow these instructions in reverse order.