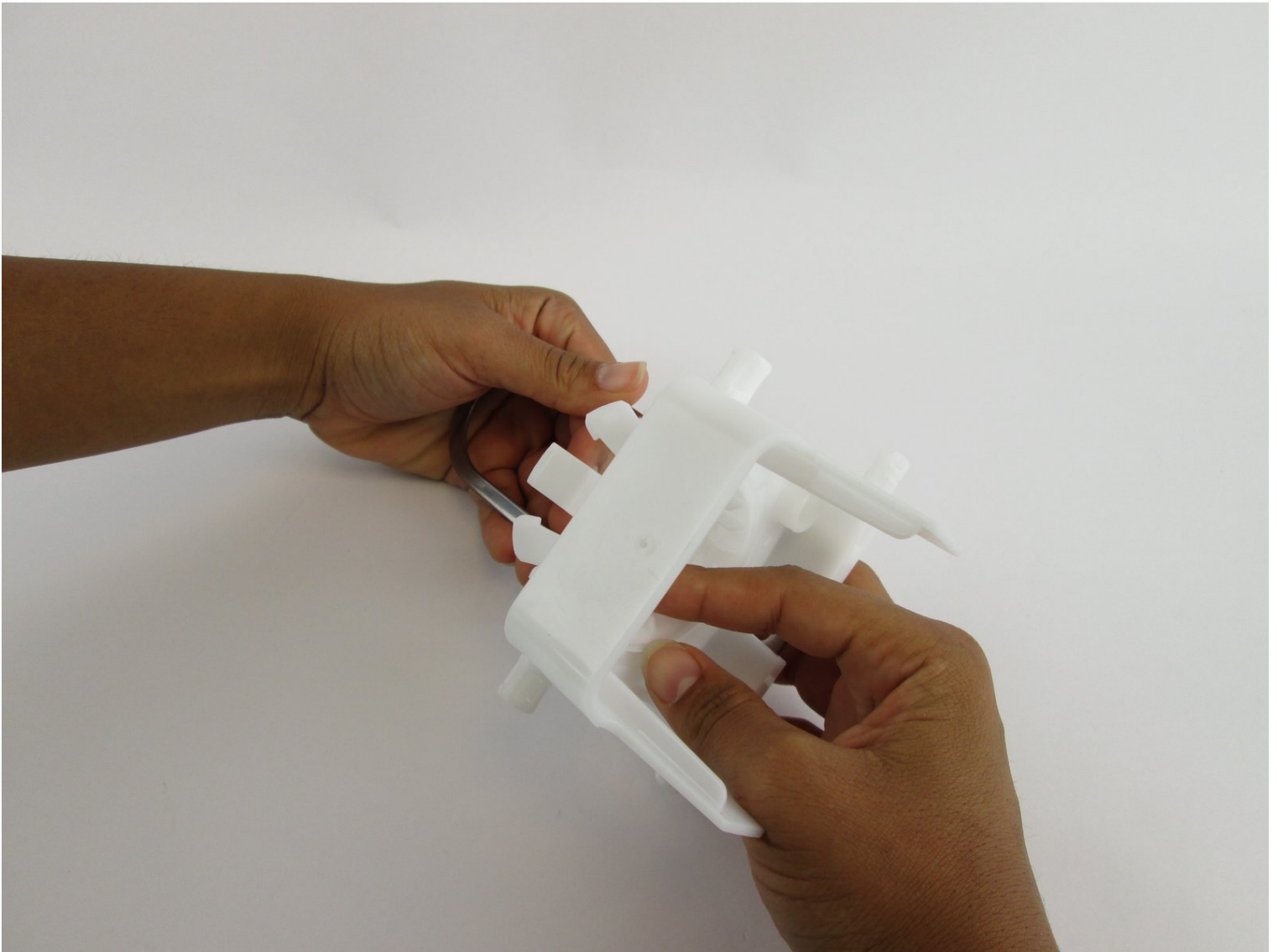




SodaStream Source Loader Tab Replacement

The SodaStream Source creates soda when the...

Written By: Angela Mossgrove



INTRODUCTION

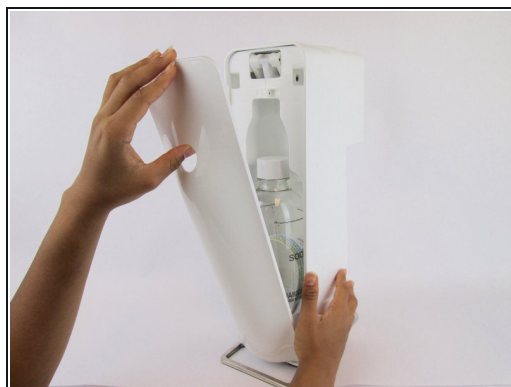
The SodaStream Source creates soda when the loader tab is engaged. Pressing on this tab initiates carbonation and flavor infusion. This tab may become damaged through use and can be replaced through the steps given in this guide. The tab is located within the carbonating block and has its own cover. Replacement of the loader tab requires both external and internal disassembly of the device. This guide shows the steps to access this internal component.



TOOLS:

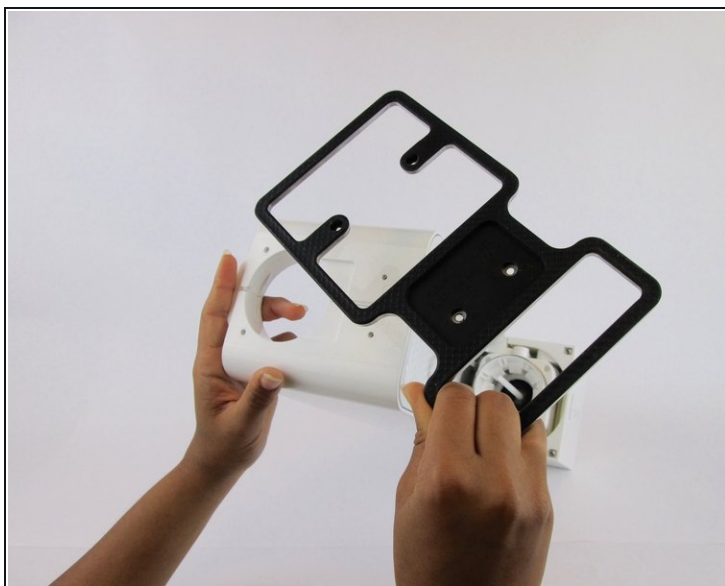
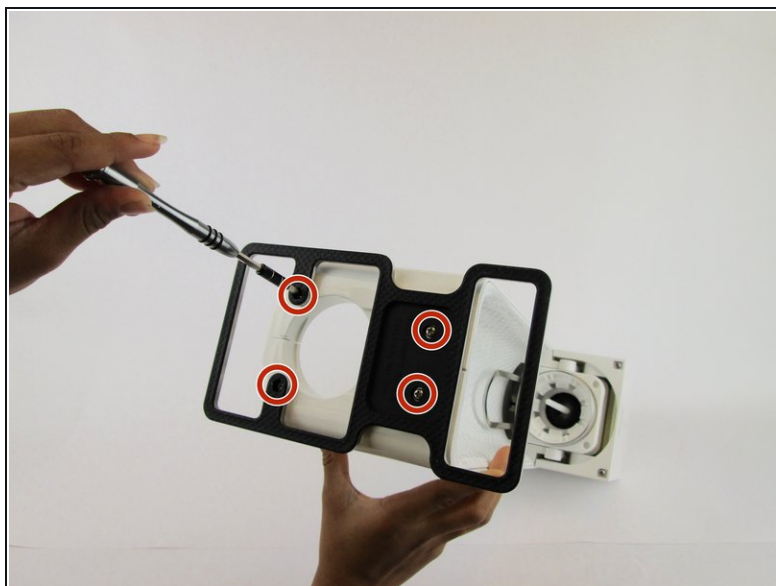
Phillips #1 Screwdriver (1)

Step 1 — SodaStream Source External Disassembly



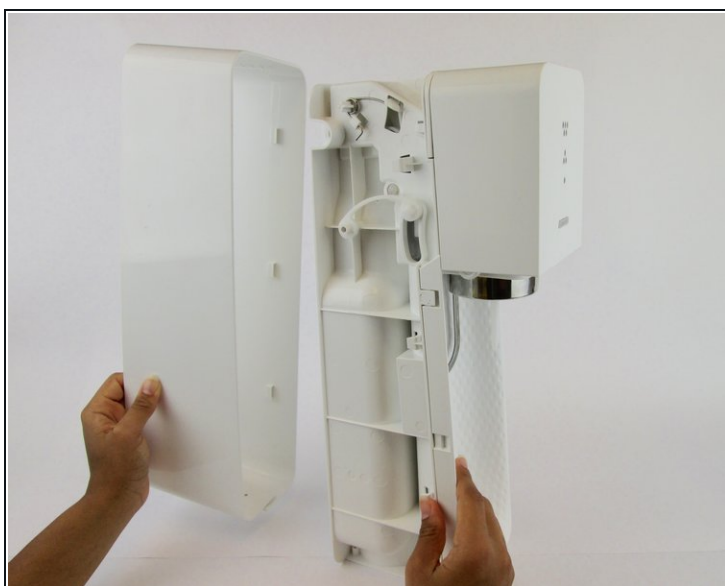
- Remove the soda bottle and the CO₂ canister from the machine.

Step 2



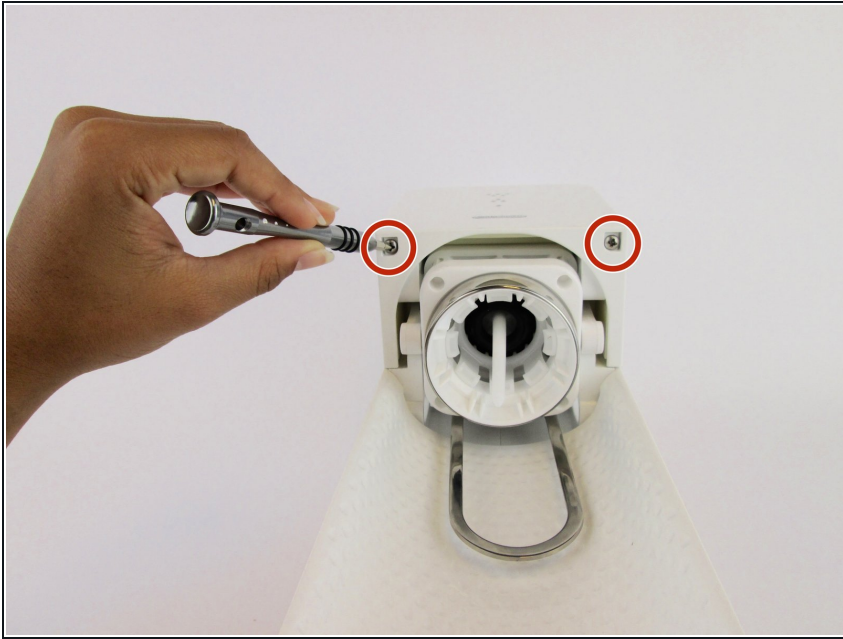
- Remove the four 17.8 mm screws from the bottom metal base using a [Phillips #1 screwdriver](#).

Step 3



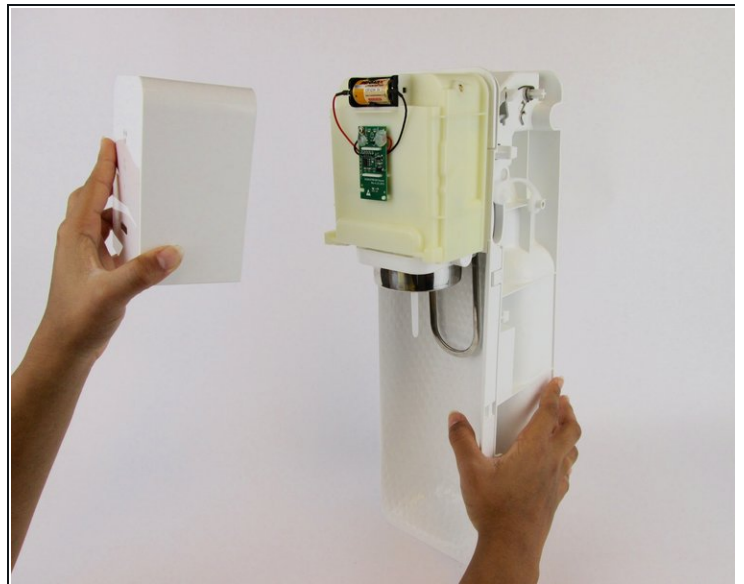
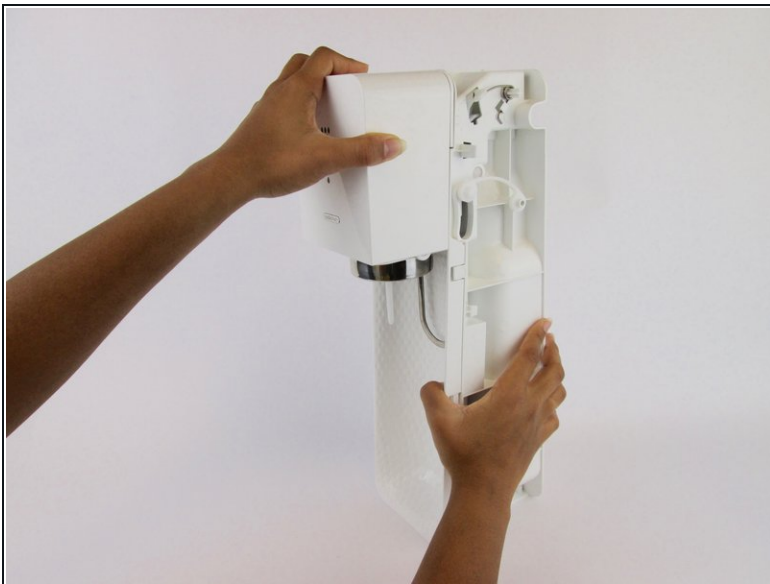
- Pull the outer cover away from the front of the device.

Step 4



- Remove the two 18.2 mm screws from the bottom of the front cover using a [Phillips #1 screwdriver](#).

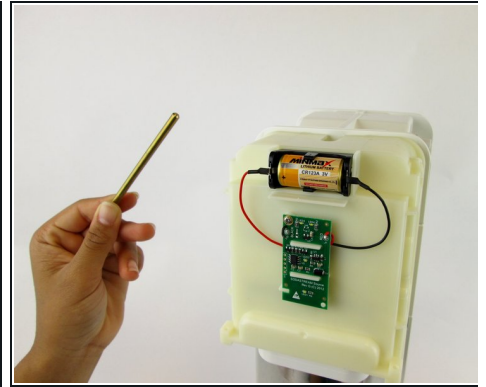
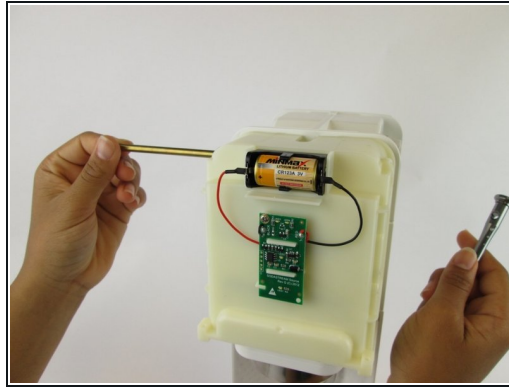
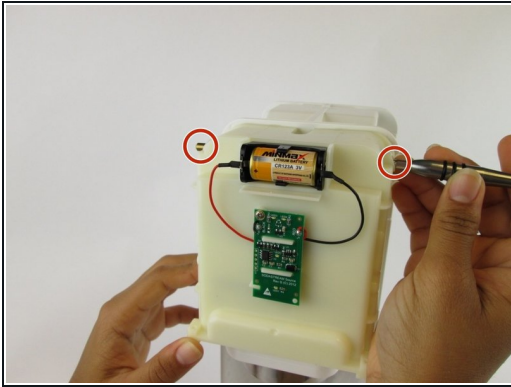
Step 5



- Firmly pull the front cover off.

i This piece is difficult to remove and requires force. It may help to use a wide, thin object to pry it off (like a [Jimmy](#)).

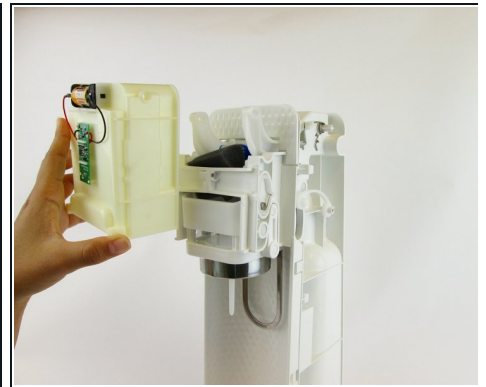
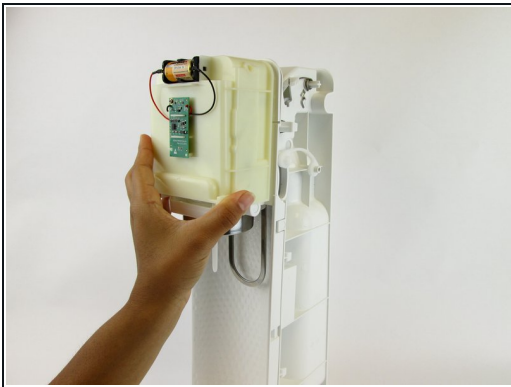
Step 6 — SodaStream Source Internal Disassembly



- Push the brass bar, located in the top of the device, out of the carbonating block.

i You can use the end of your screwdriver to push this piece out.

Step 7



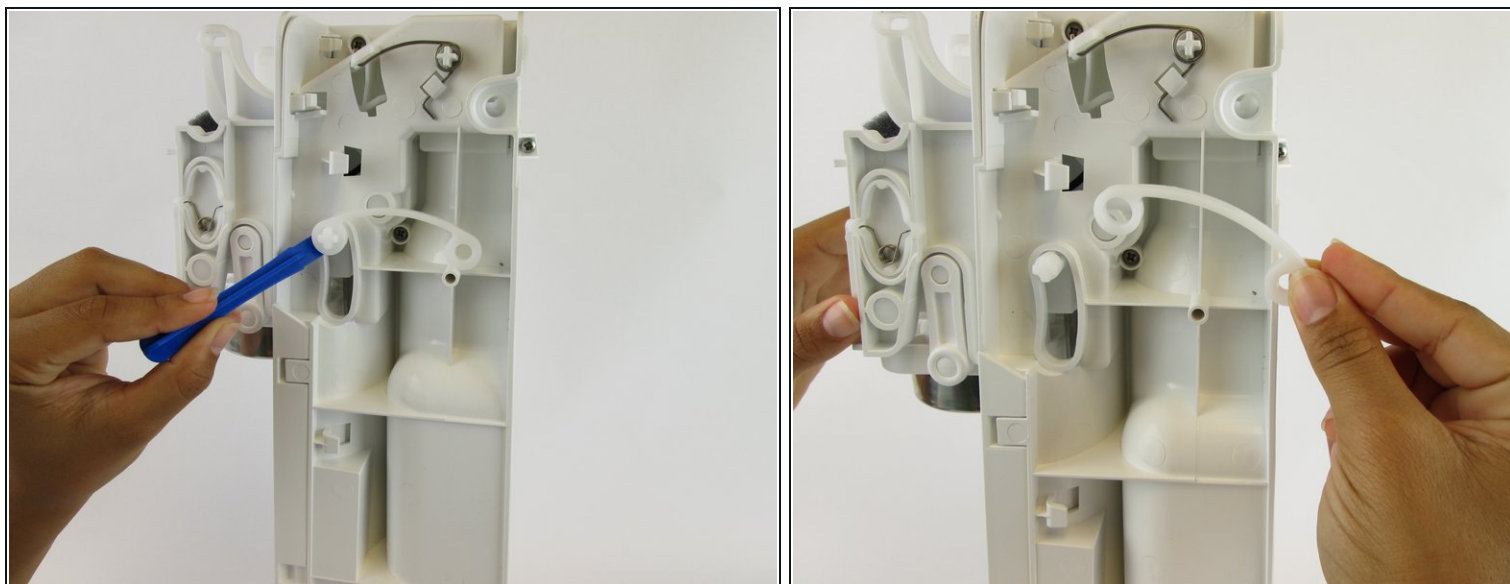
- Slide the yellow battery cover up and away to remove it from the device.

Step 8



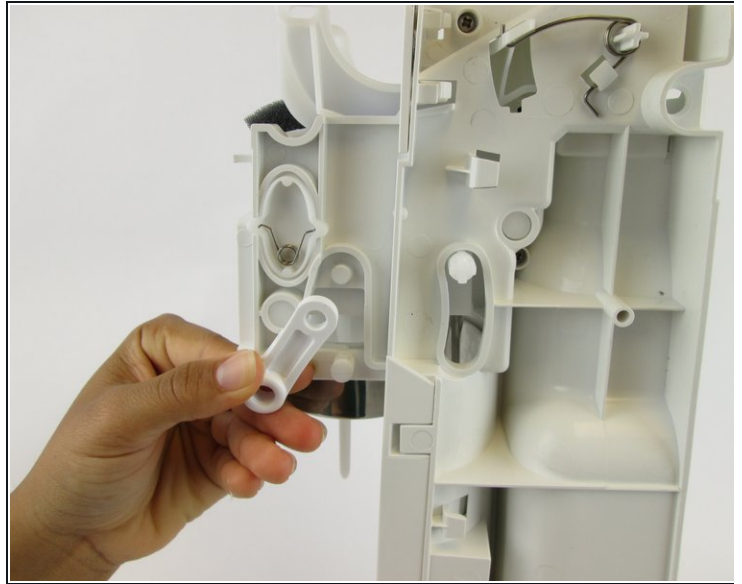
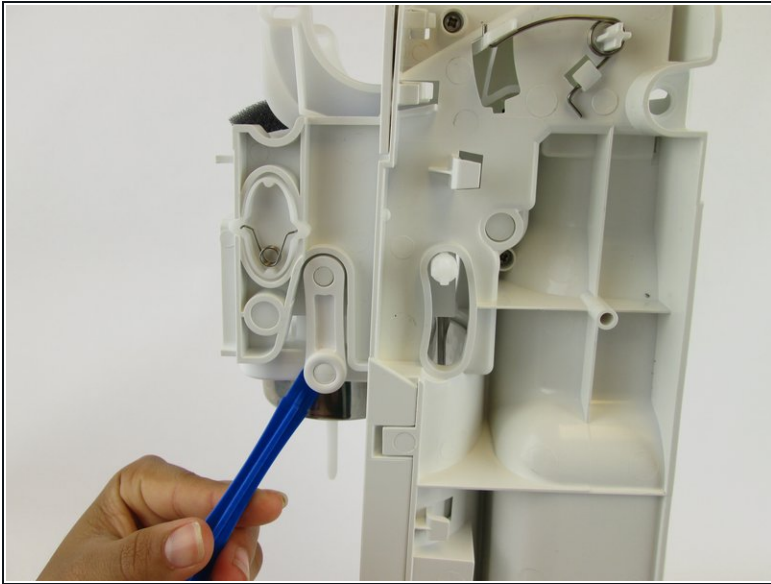
- Unhook the bottom piece of the plastic arm on each side of the device.

Step 9



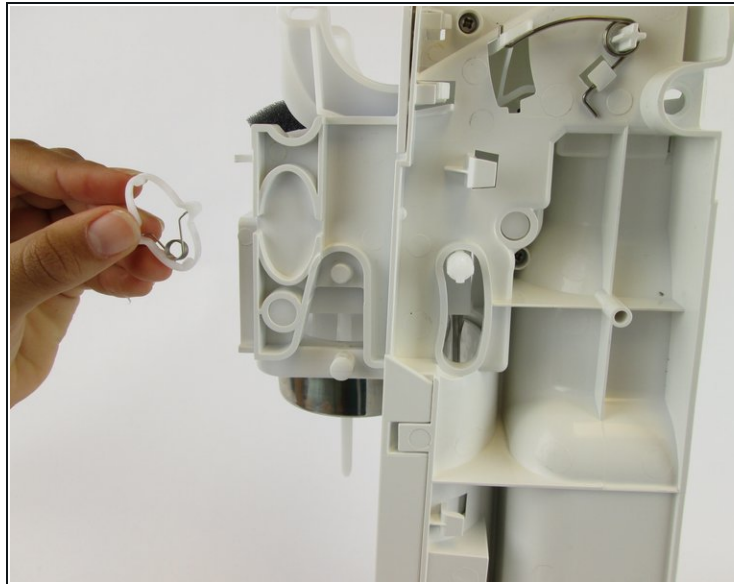
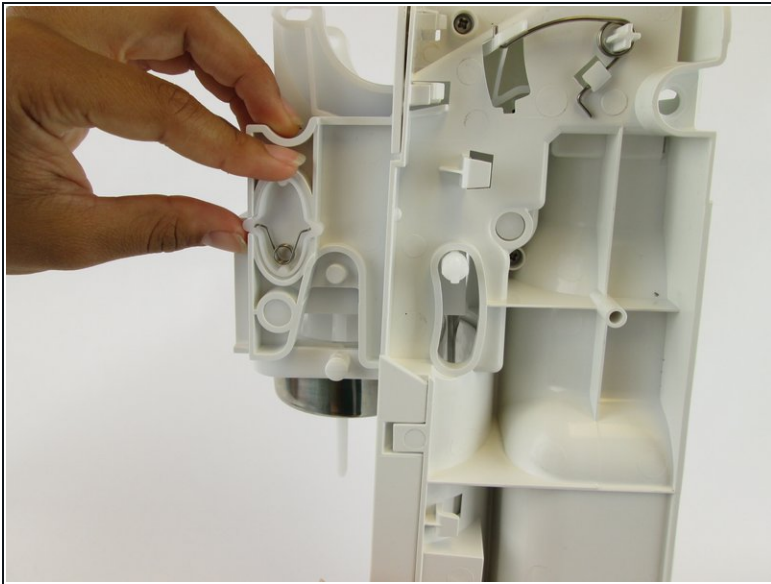
- Lift the top of the plastic arm with the spudger and remove it on both sides.

Step 10



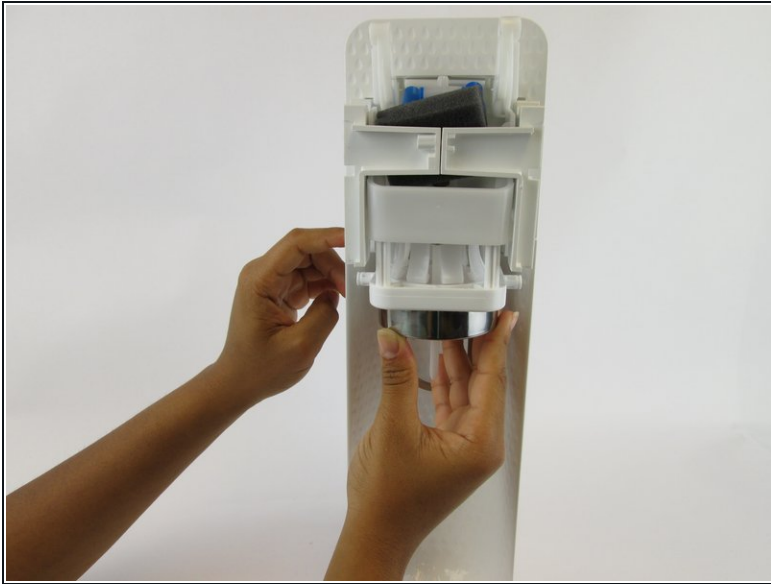
- Remove the plastic piece, located near the front of the carbonating block, from both sides of the device using a plastic opening tool or nylon spudger.

Step 11



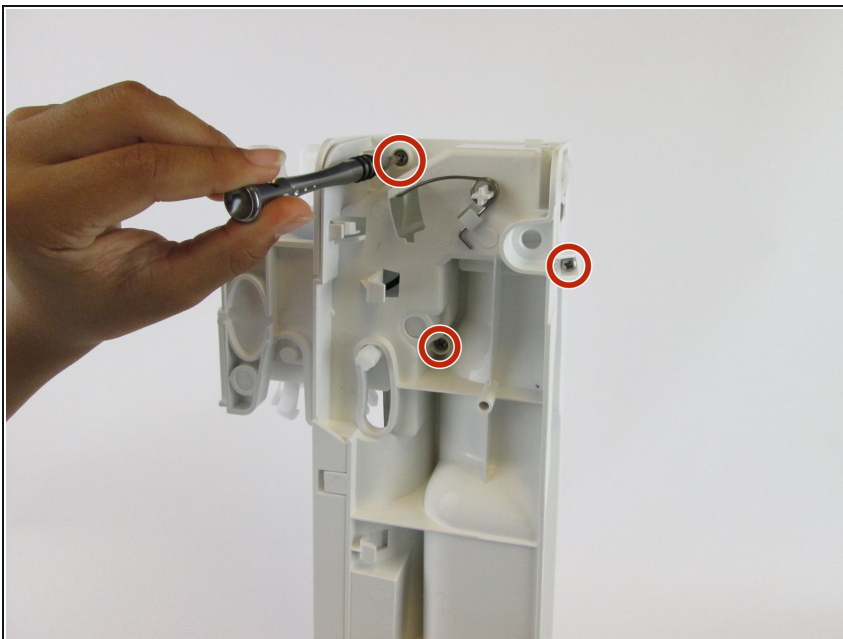
- Remove the plastic oval and the spring within it.

Step 12



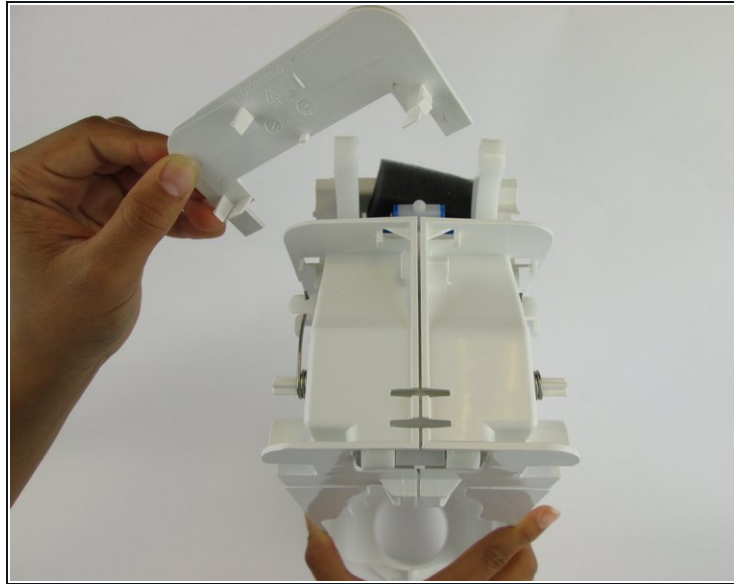
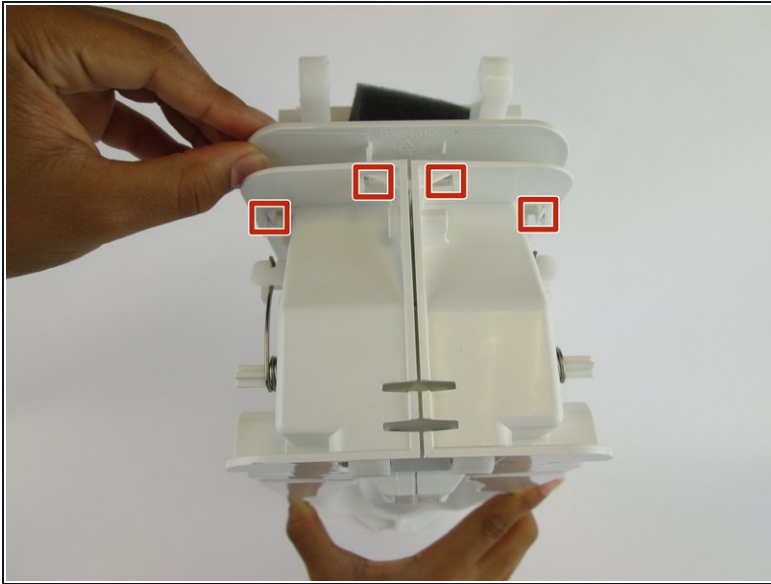
- Pull the loader tab cover down and away from the rest of the carbonating block.

Step 13



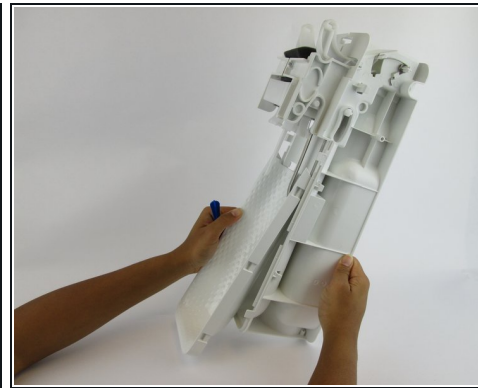
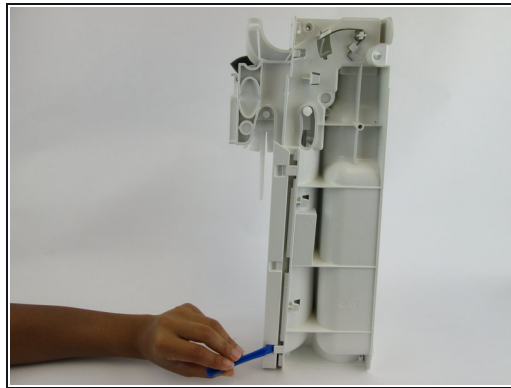
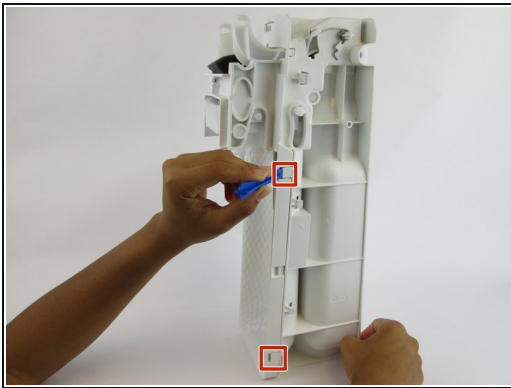
- Remove the three 17.9 mm screws located on the right side.
- ⓘ These screws may be difficult to access.

Step 14



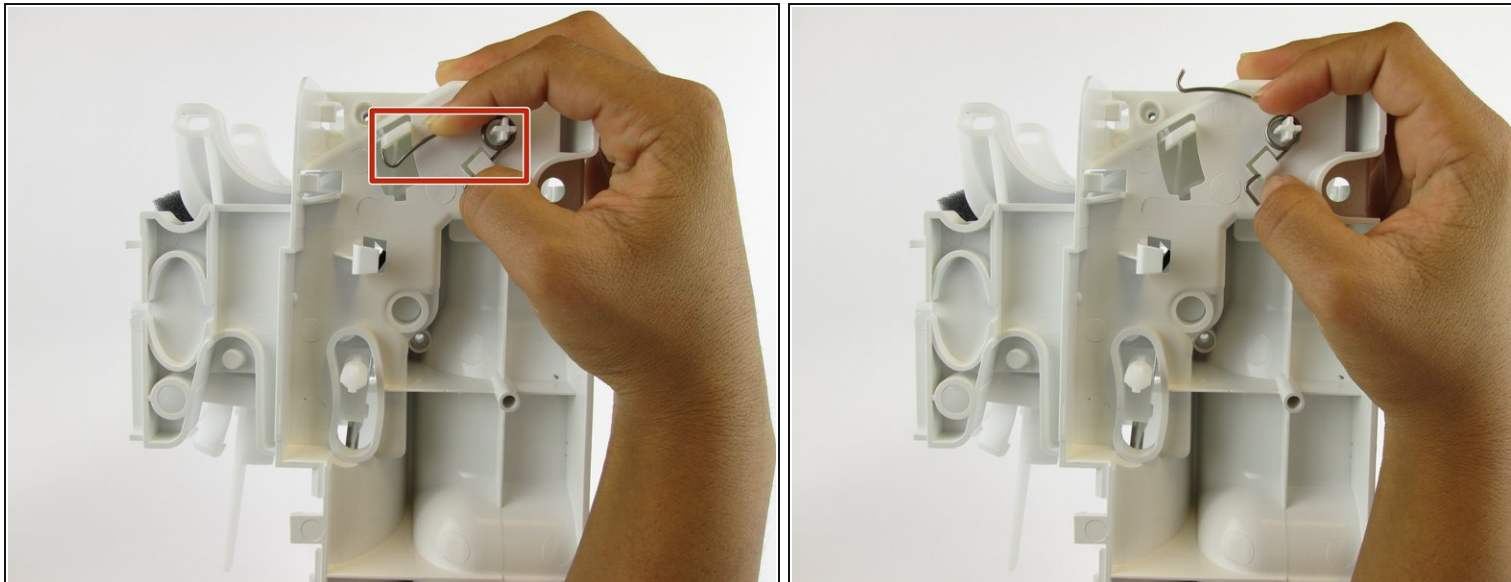
- Unhook the four clips on the top of the carbonating block and remove the plastic cover.

Step 15



- Lift the clips located on both sides with the plastic spudger. Slide the front cover off.

Step 16



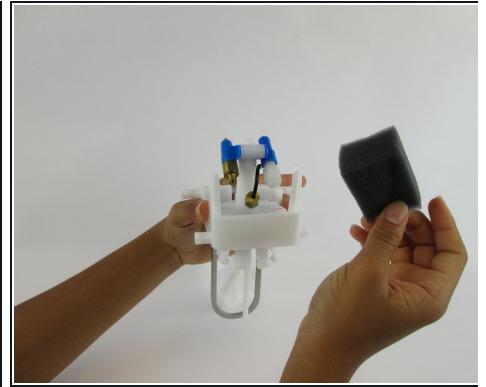
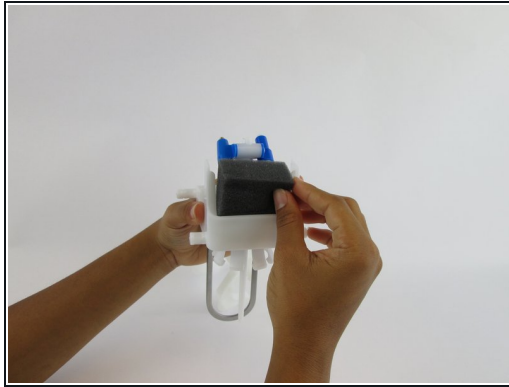
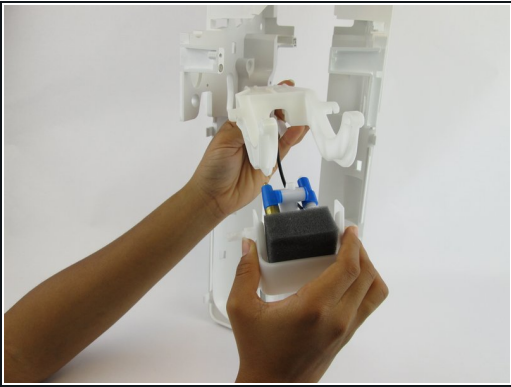
- Unhook the silver spring arms on both sides of the device by pushing down.

Step 17



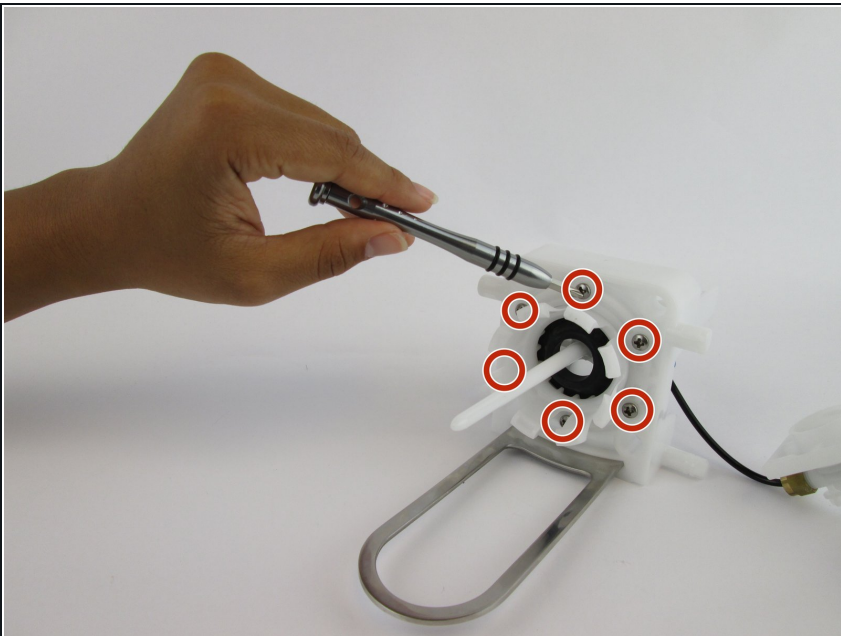
- Grip the right and left sides of the device and pull it into two identical halves.
- ① Once these two pieces are apart, all remaining internal components will fall out of the device.

Step 18



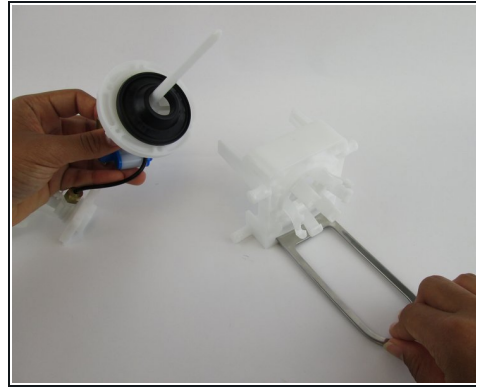
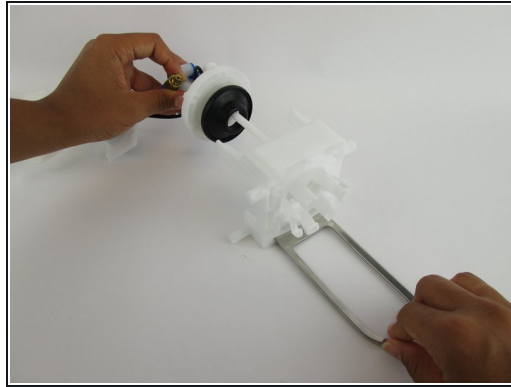
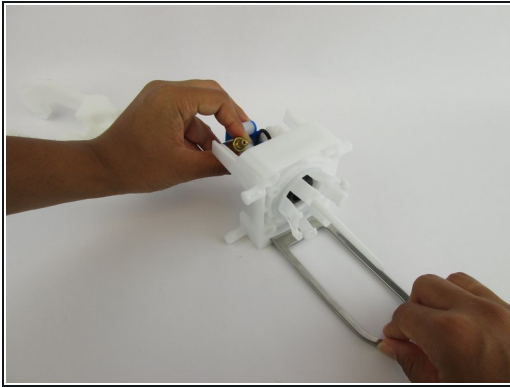
- Pull the foam pad up and remove it from the front side of the carbonation component.

Step 19



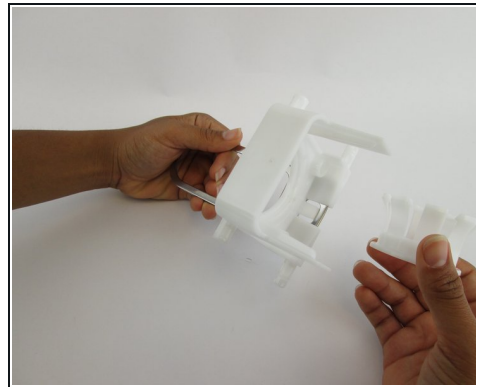
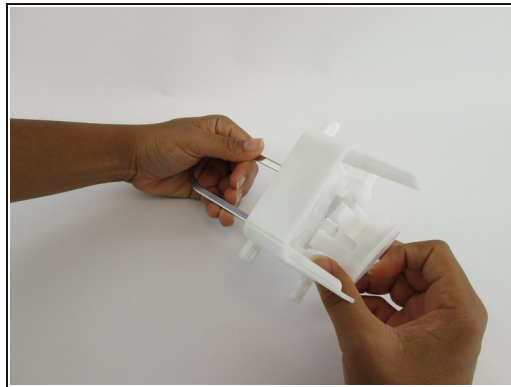
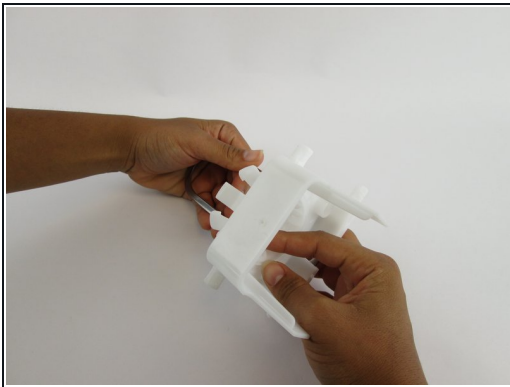
- Remove the six 17.7 mm screws from the underside of the loader tab piece.

Step 20



- Pull the loader tab out of the nozzle.

Step 21 — Loader Tab



- Pull the small inner plastic circle out of the large plastic loader tab piece.

To reassemble your device, follow these instructions in reverse order.