



Pebble Time Screen Cover Replacement

Replacement guide for the screen cover of the Pebble Time.

Written By: Nicolas Hempe



INTRODUCTION

Replacement guide for the screen cover of the Pebble Time.

TOOLS:

- [Metal Spudger](#) (1)
 - [iFixit Opening Tools](#) (1)
-

Step 1 — Screen Cover



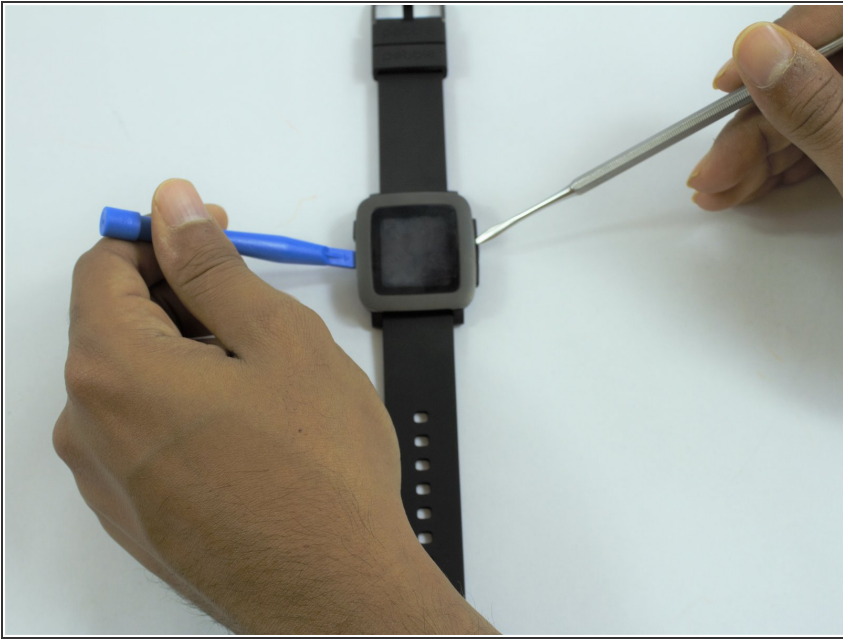
- Lay the watch flat on your workstation.

Step 2



- Use the metal spudger to carefully pull apart the screen cover from the case.
- Replace the metal spudger with a plastic opening tool to hold the cover open.

Step 3



- Use the metal spudger tool to carefully loosen the rest of the cover.

Step 4



- Carefully, pull apart the cover with the plastic opening tool.

To reassemble your device, follow these instructions in reverse order.