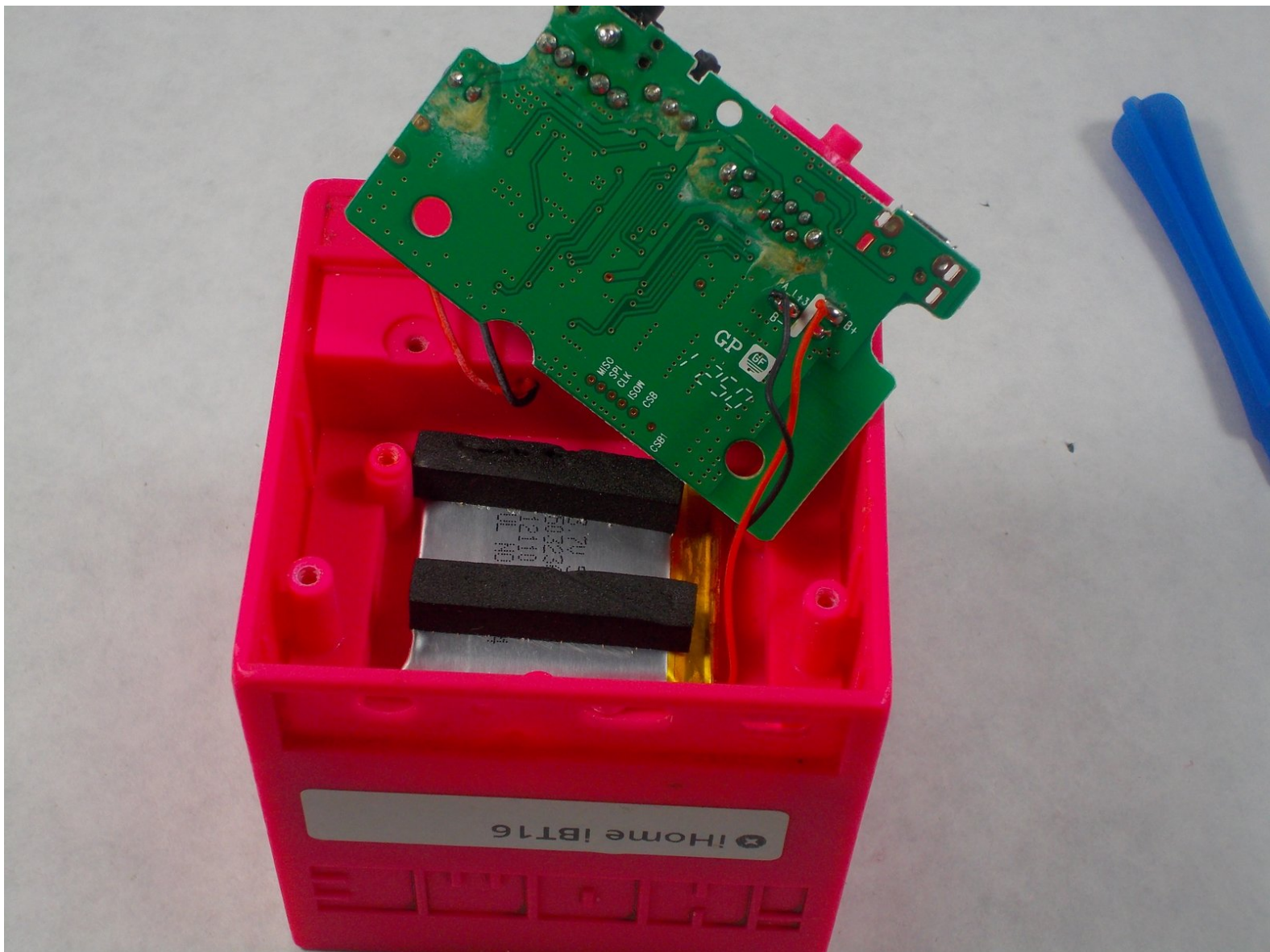




# iHome IBT16 Battery Replacement

This guide will teach you the steps needed to replace a bad battery within the iHome iBT16.

Written By: Steven Ferreira



# INTRODUCTION

This guide will teach you how to correctly remove the battery for this device.



## TOOLS:

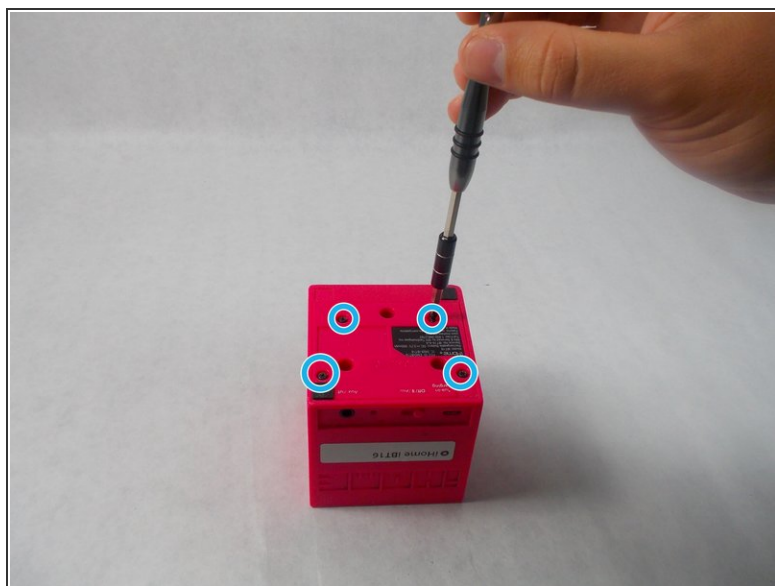
- [Phillips #00 Screwdriver](#) (1)
- [iFixit Opening Tools](#) (1)
- [Desoldering Braid](#) (1)
- [Soldering Iron](#) (1)






## PARTS:

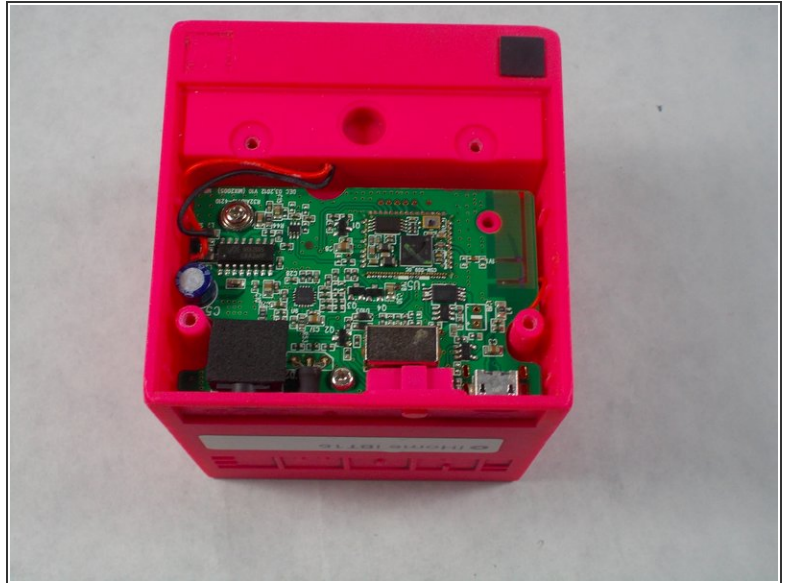
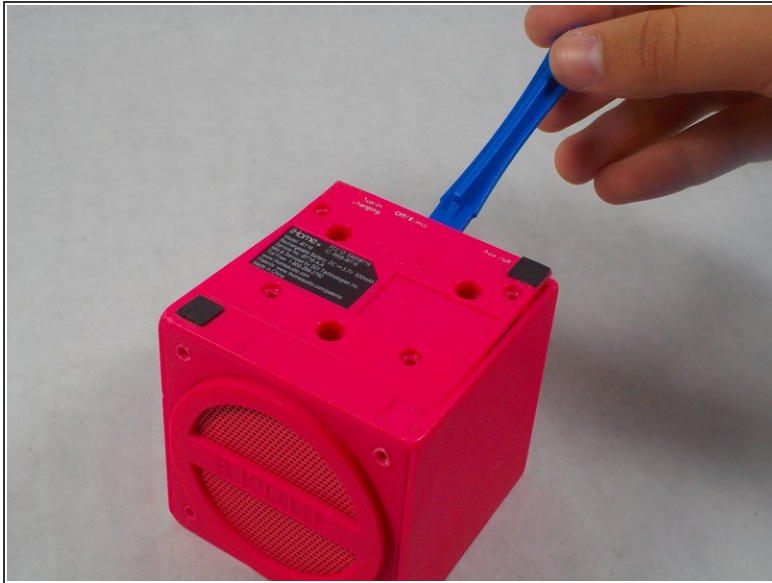
- [iHome iBT16 Base Plate](#) (1)
- [1 x Battery](#) (1)

## Step 1 — Base Plate



-  Make sure to flip the device over to get into the correct orientation
-  Using the Philips #00 Screwdriver, unscrew and remove the four 9mm black screws on the base plate of the device.
-  Make sure to keep these screws in a safe location so you don't lose them

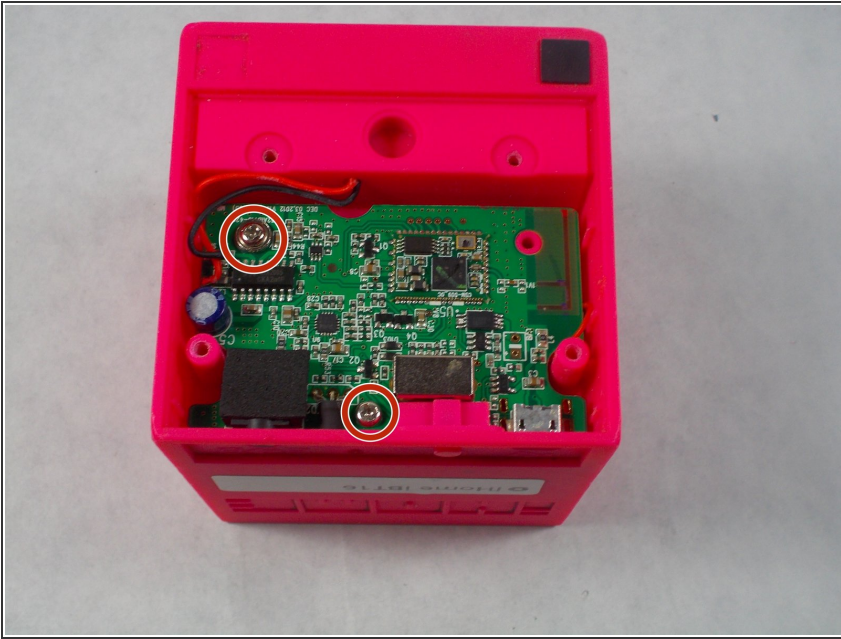
## Step 2



- Using the plastic opening tool, insert into the crack between the base plate and the main body of the device
- Using a lever like motion, push the opening tool down thus lifting the plate
- ⓘ You will need to use your fingers to lift the base plate off the main body of the device
- ★ The motherboard is directly underneath the base plate



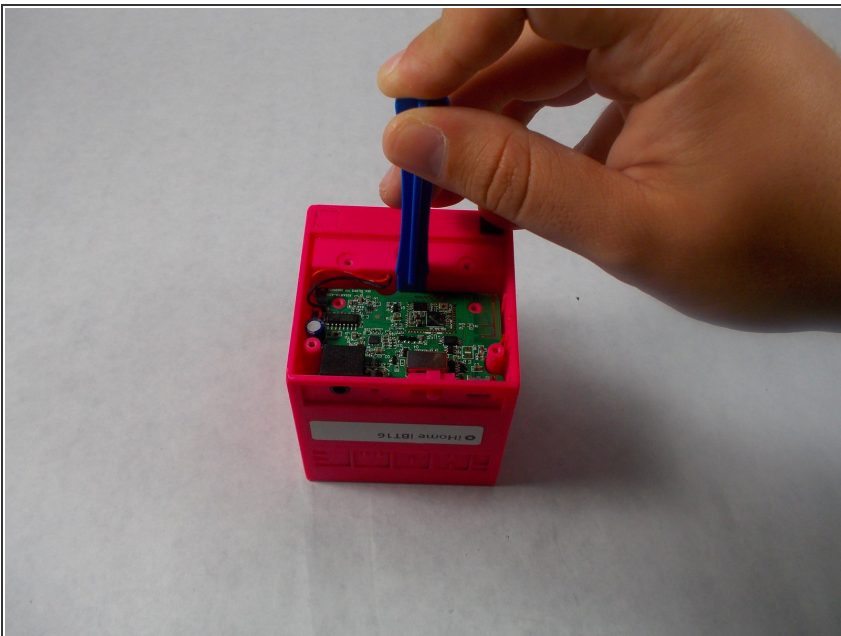
## Step 3 — Battery



- Inside the iHome remove the two 10mm silver Phillips screws that are on the motherboard.

⚠ Connect the ground strap to earth ground and put it around your wrist.

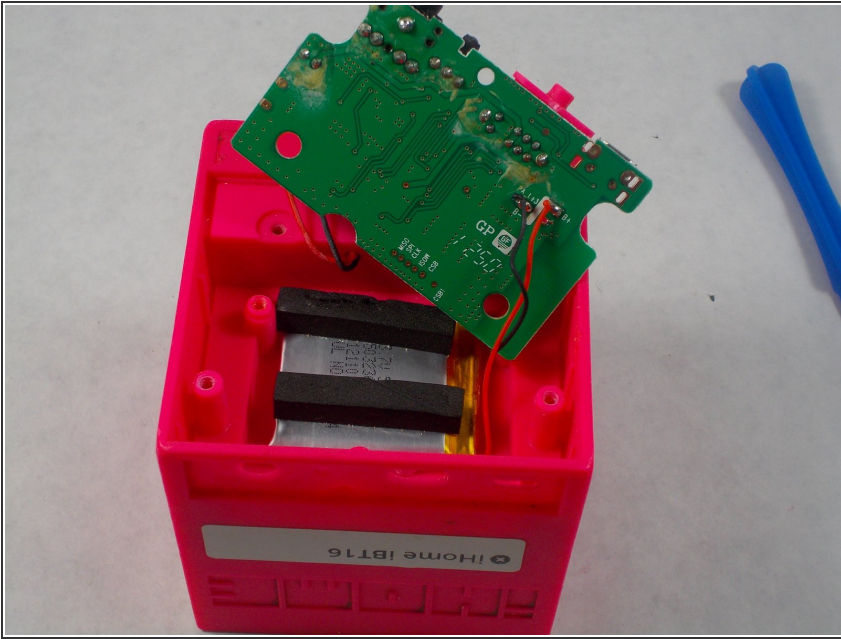
## Step 4



- Take the motherboard out of the device, use the Plastic opening tool to ensure the power switch doesn't get stuck.

⚠ Don't pull too hard as you could possibly rip some wires or break the switch.

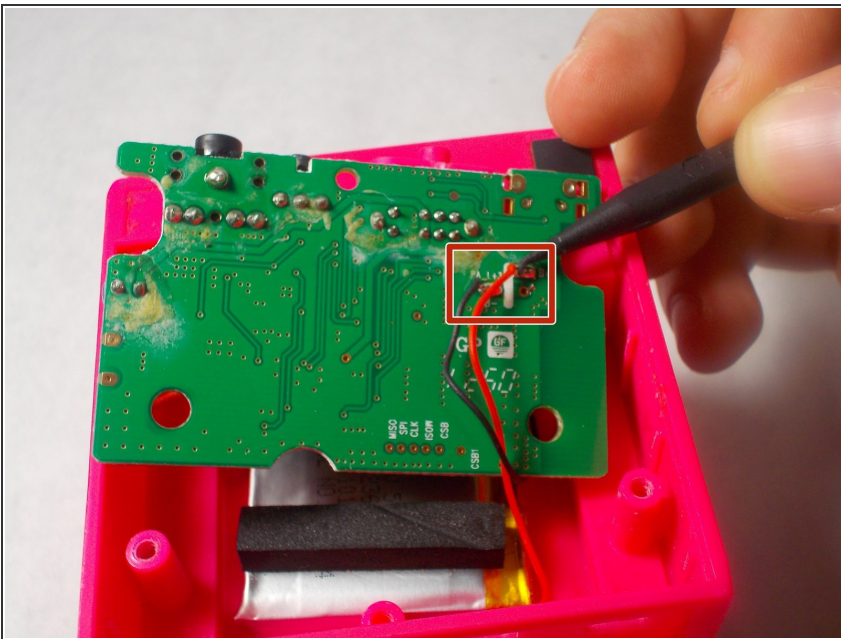
## Step 5



- Take the battery out from underneath the motherboard.

⚠ The battery is connected to the motherboard, don't pull the battery too hard or too far from the motherboard.

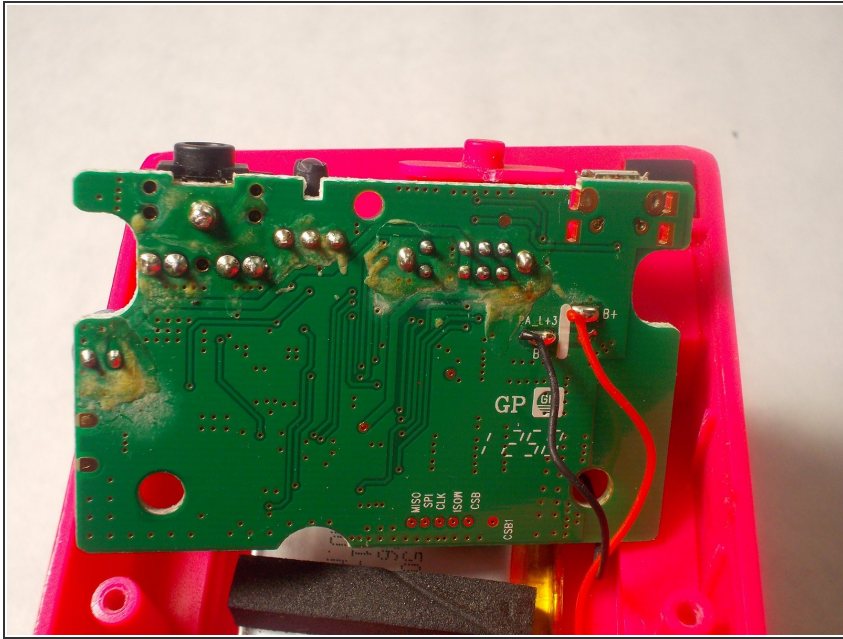
## Step 6



- Unsolder the black and red wires that are connected to the motherboard.

⚠ Don't hold the soldering iron to the solder joints for more than 10 seconds at a time.

## Step 7



- Remove the bad battery by unsoldering the red wire from the B+ solder joint and the black wire from the B-

To put it all back together, solder the battery wires to the correct solder joints. Then place the battery back under the motherboard and screw the motherboard back on. After that put the face plate back on, and screw on the face plate