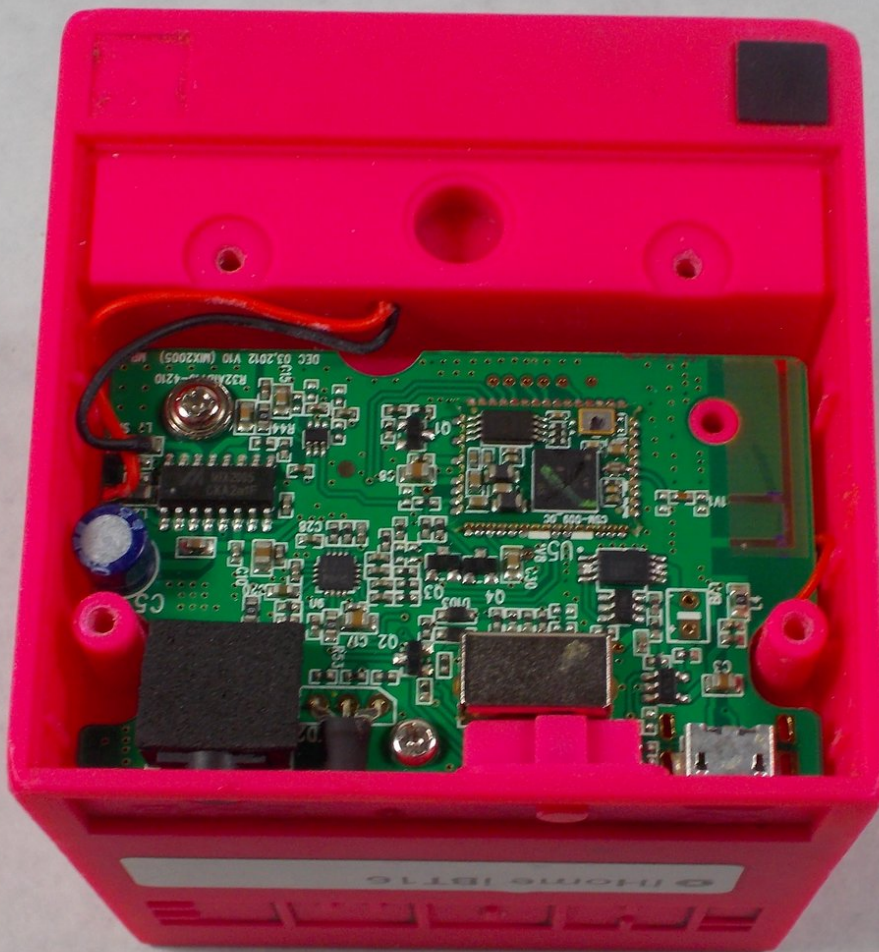




# iHome IBT16 Micro USB port Replacement

How to replace the micro USB port on the iHomeiBT16.

Written By: Steven Ferreira



---

# INTRODUCTION

After reading this guide you will know how to replace the micro USB port on an iHomeiBT16.

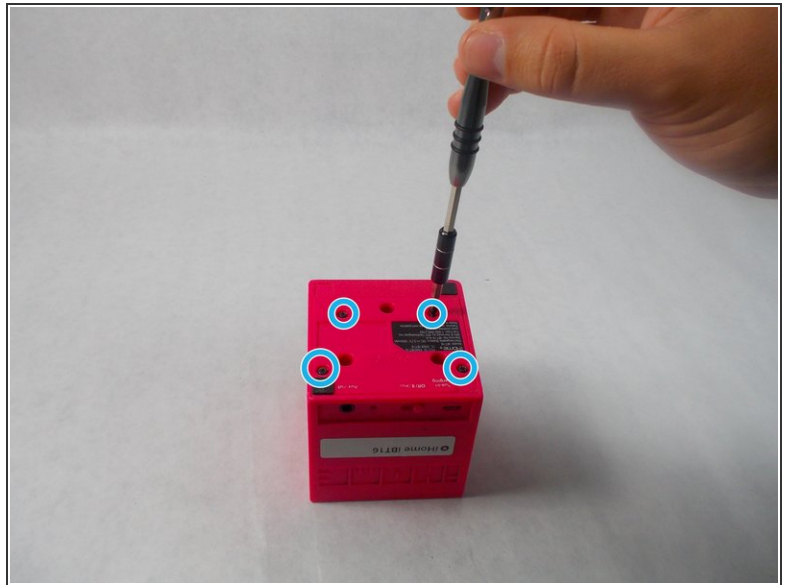
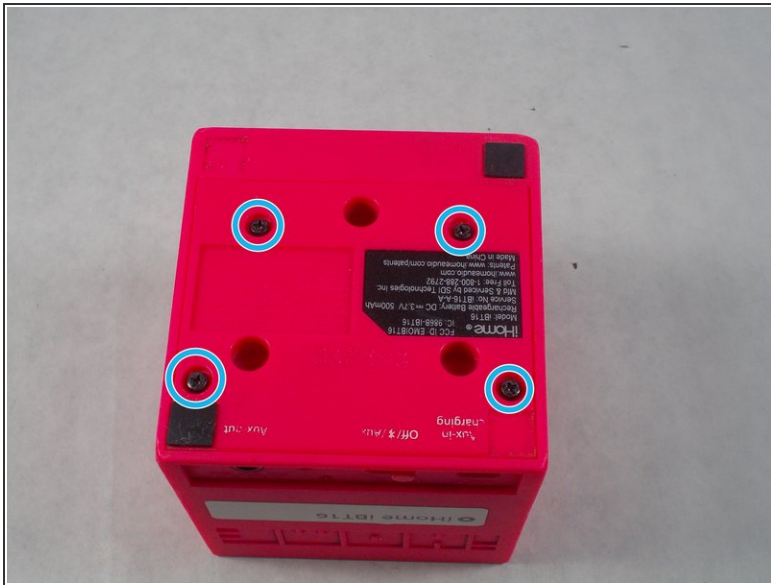
---






## TOOLS:

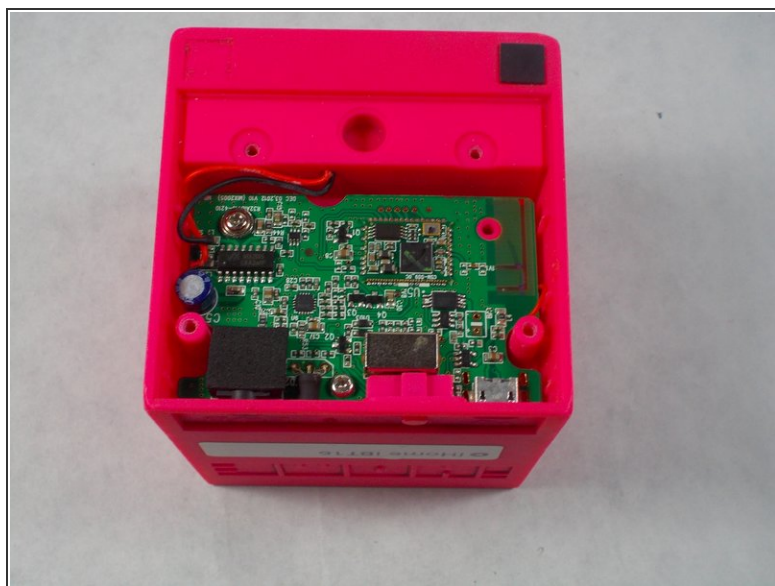
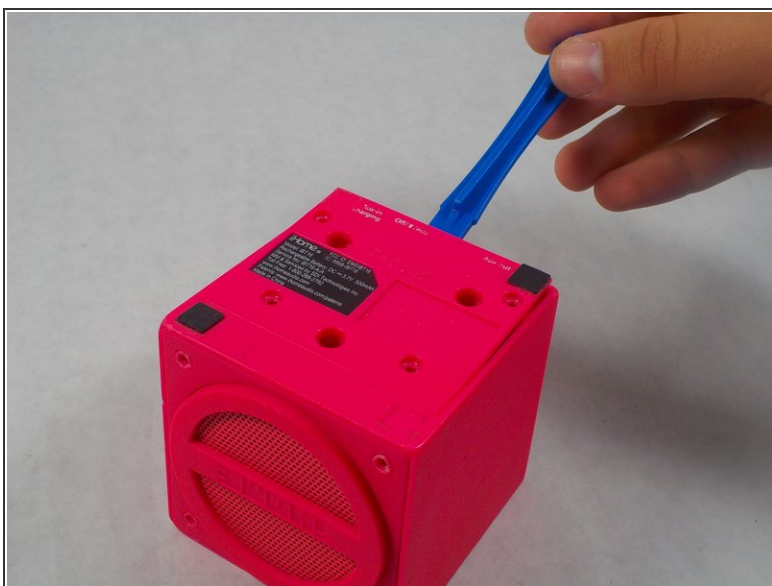
- [Phillips #00 Screwdriver](#) (1)
  - [iFixit Opening Tools](#) (1)
  - [Soldering Iron](#) (1)
  - [Desoldering Braid](#) (1)
-

## Step 1 — Base Plate



-  Make sure to flip the device over to get into the correct orientation
-  Using the Philips #00 Screwdriver, unscrew and remove the four 9mm black screws on the base plate of the device.
-  Make sure to keep these screws in a safe location so you don't lose them

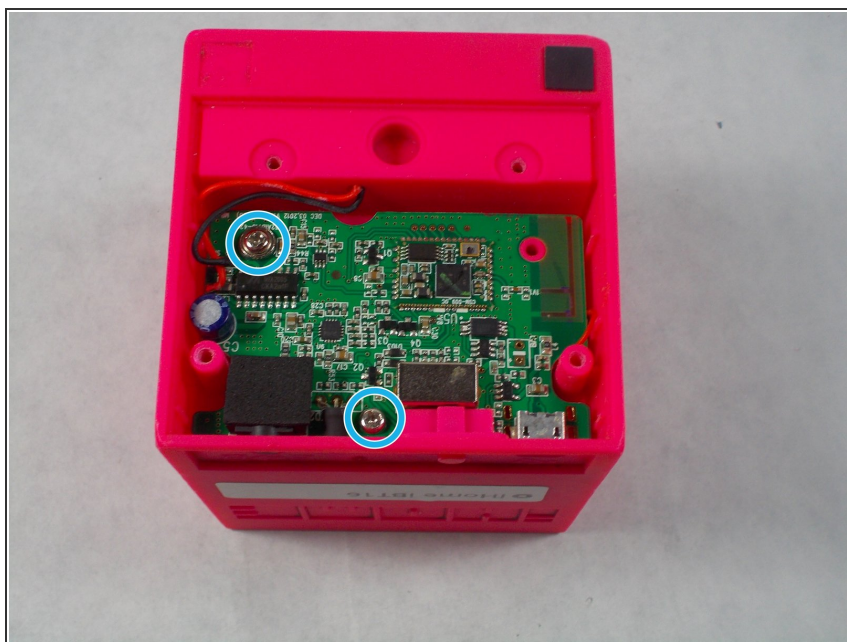
## Step 2



- Using the plastic opening tool, insert into the crack between the base plate and the main body of the device
- Using a lever like motion, push the opening tool down thus lifting the plate
- ⓘ You will need to use your fingers to lift the base plate off the main body of the device
- ★ The motherboard is directly underneath the base plate



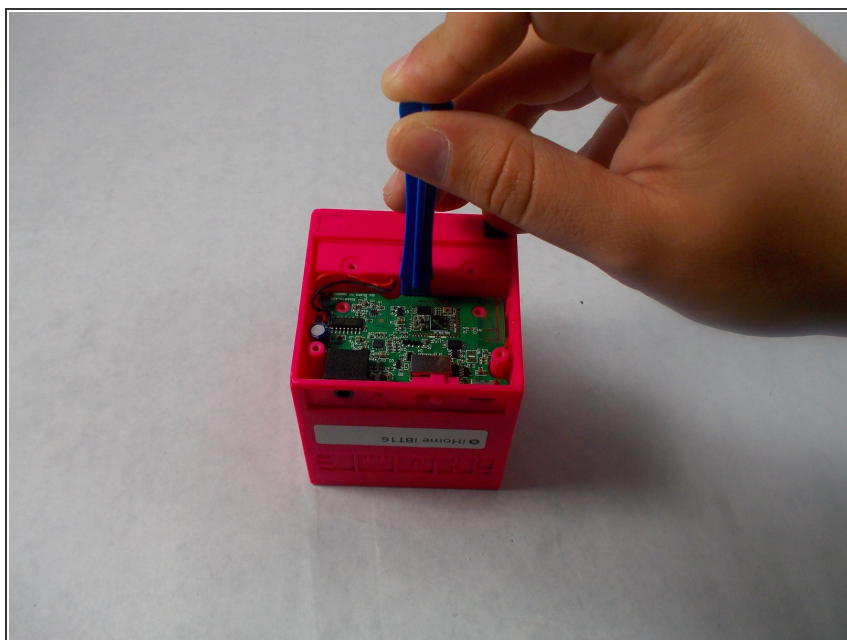
## Step 3 — Micro USB port



- Inside the iHome remove the two silver Phillips screws that are on the motherboard.

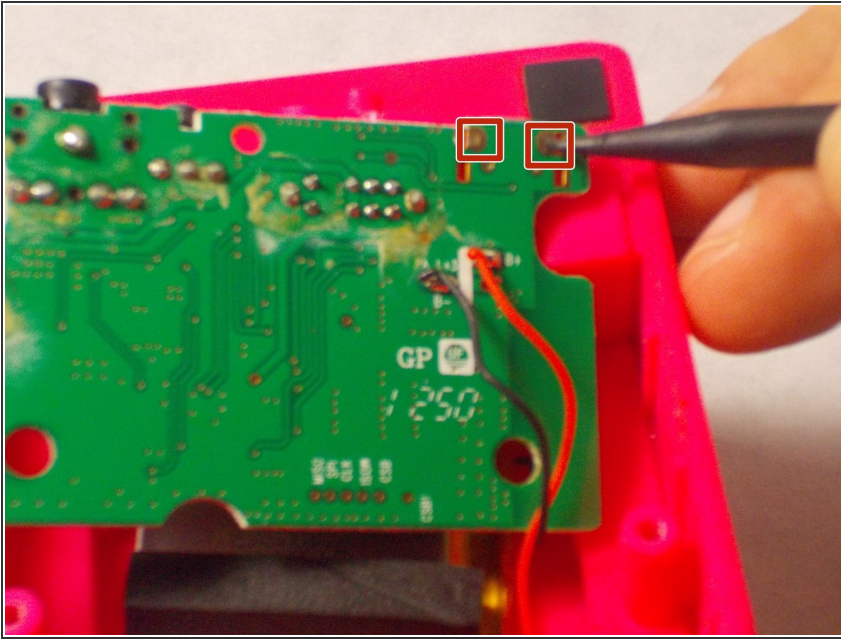
⚠ Connect the ground strap to ground, and then put the strap around your wrist.

## Step 4



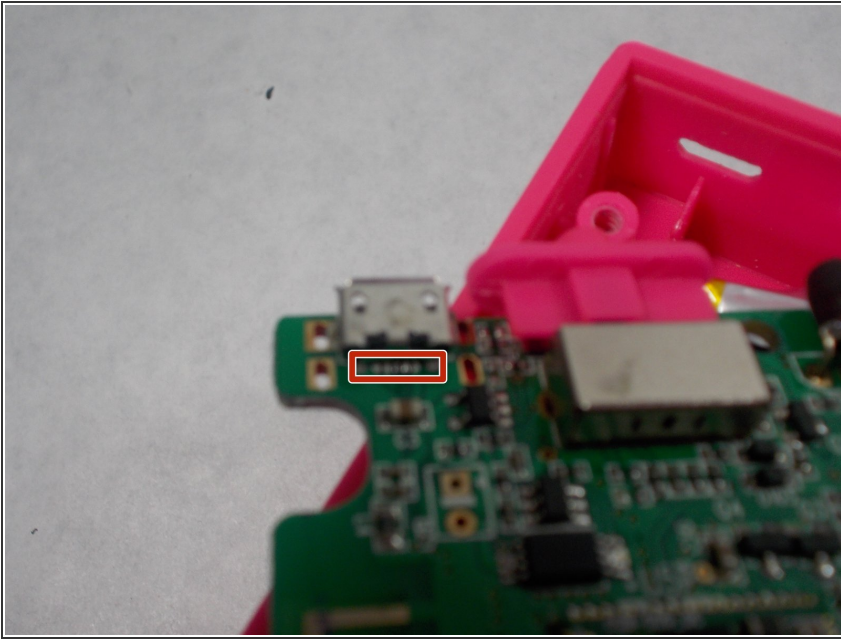
- Take the motherboard out of the device, use the plastic opening tool to ensure the power switch doesn't get stuck.

## Step 5



- On the other side of the motherboard unsolder the two biggest solder joints under the micro USB.

## Step 6



- On the side of the motherboard that the micro USB connector is there are five surface mount solder joints at the back of the connector. Unsolder these five solder joints.

To reassemble your device, follow these instructions in reverse order.