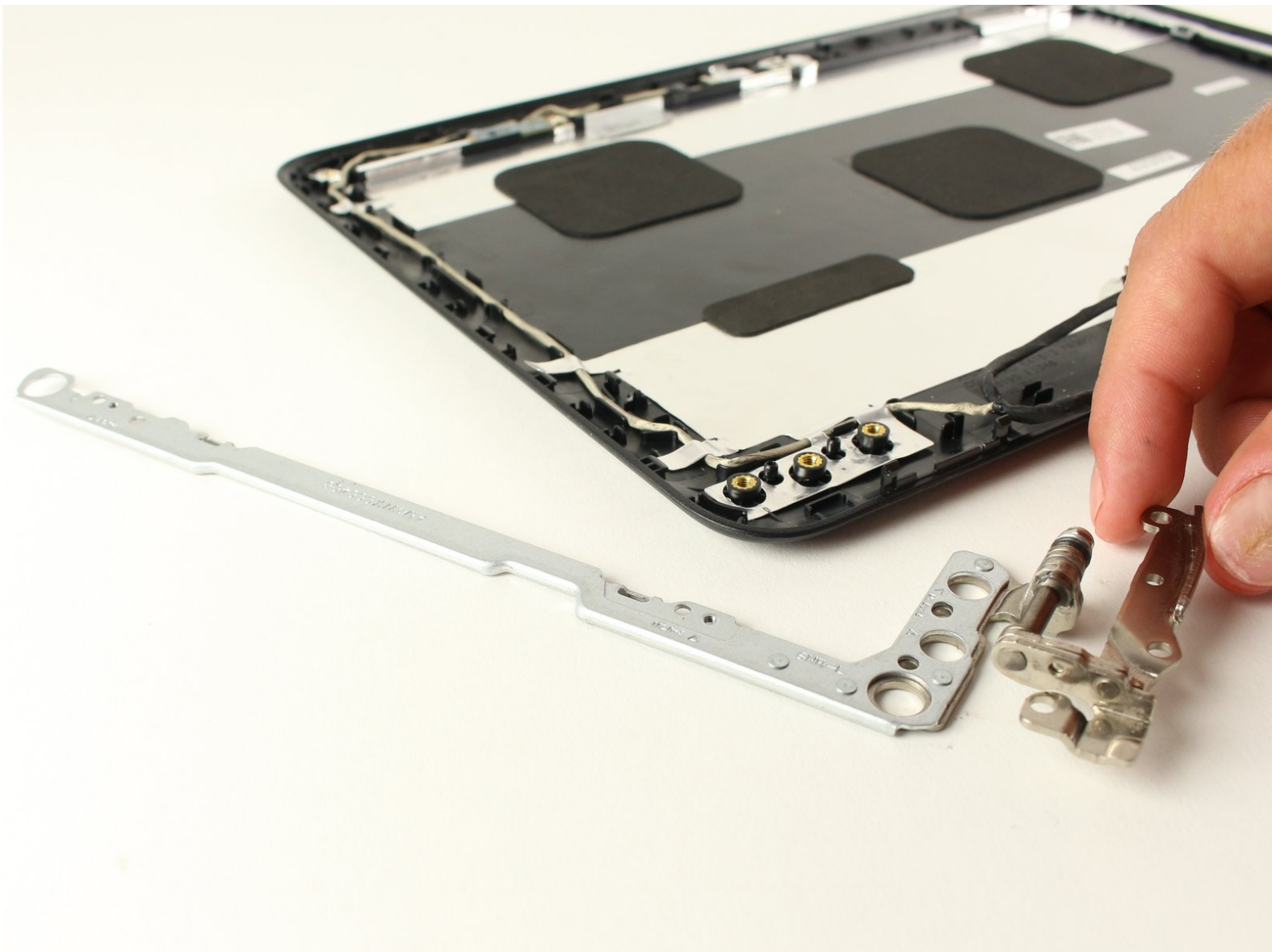




Dell Chromebook 11 3180 Display Hinges Replacement

This page will guide you through replacing the hinges of the Chromebook.

Written By: Devon Paul



INTRODUCTION

The display hinges of your laptop may need to be replaced. They can get damaged from dropping your computer, or even just from everyday wear. This replacement is a little bit more lengthy, but still very conquerable for someone with minimal experience working with electronics.



TOOLS:

- [Phillips #0 Screwdriver](#) (1)
 - [iFixit Opening Tool](#) (1)
 - [Tweezers](#) (1)
-

Step 1 — Back Cover



- Set your laptop upside down on your work space.

Step 2



- Using tweezers, remove the circular stickers that are covering the two screws near the middle of the back cover. Stick them to the laptop next to the screws.

Step 3



- Using a Phillips #0 screwdriver, loosen all seven 2.5mm screws on the back cover of the device.
- ⓘ These screws will stay attached to the back cover, so just loosen them until they rattle around.

Step 4



- Using a plastic opening tool, begin to separate the back cover from the body of the computer.

i If you have trouble prying a particular part of the back cover off, make sure that the nearest screws are fully loosened.

Step 5



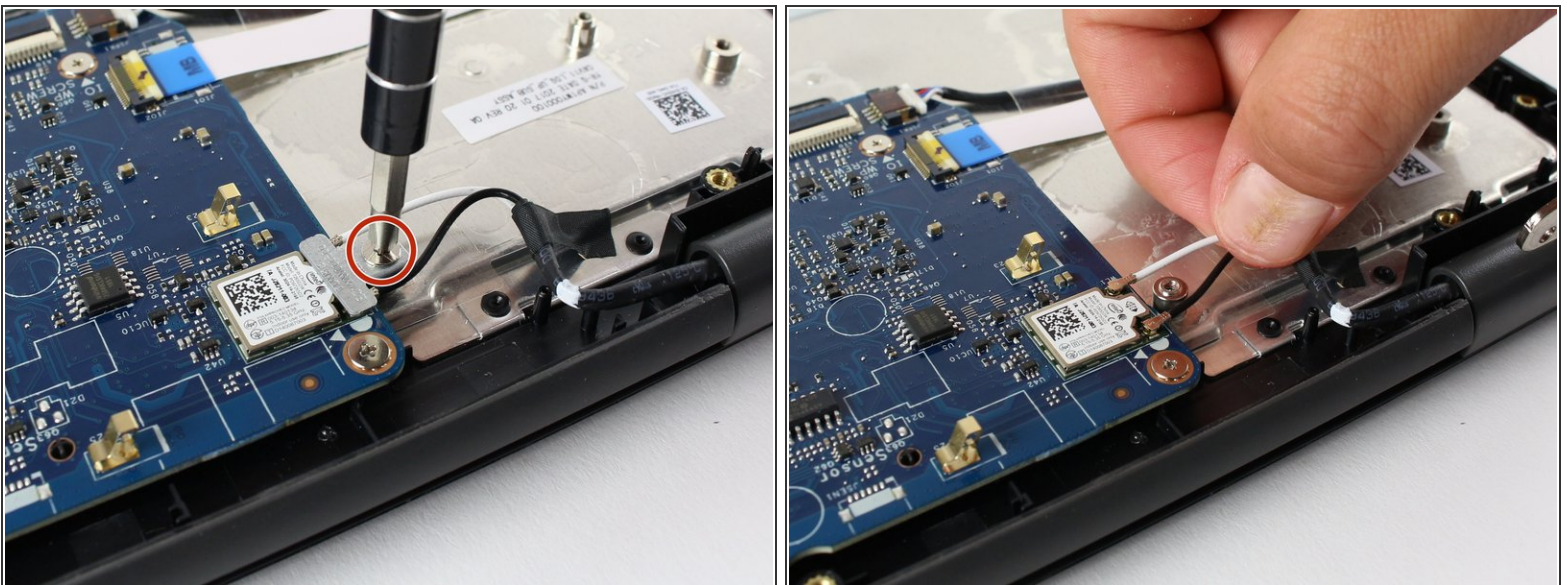
- Using your hands, pull the back cover fully off of the body of the computer.

Step 6 — Screen



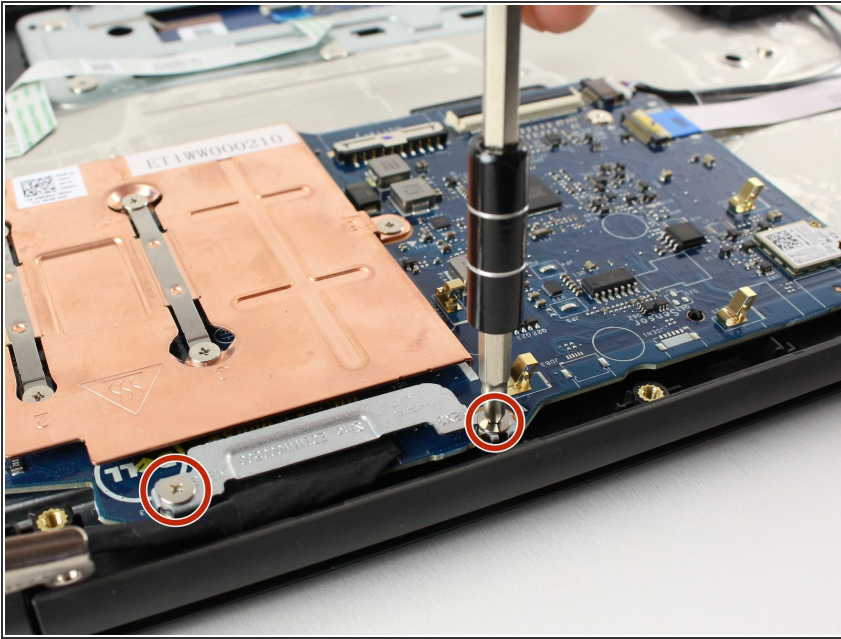
- Using a Phillips #0 screwdriver, remove each of the five 5.5mm screws.

Step 7



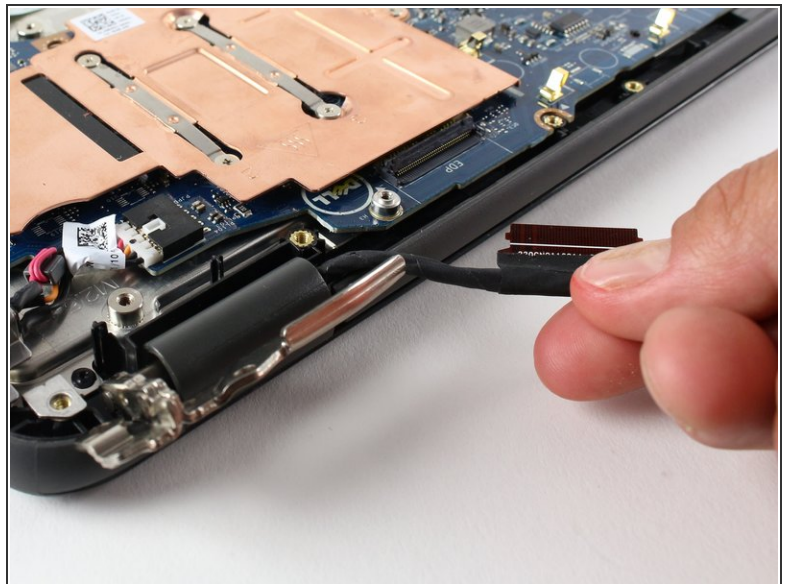
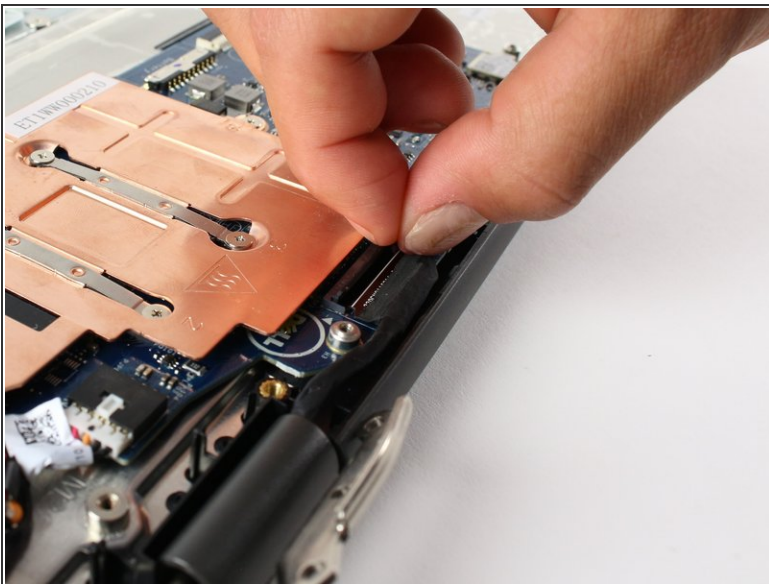
- Using a Phillips #0 screwdriver, remove the single 3mm Phillips head screw holding down the small metal bracket that covers where the small black and white wires connect to the motherboard.
- Once this screw has been removed. Unplug these two wires by gently pulling them up and away from the motherboard. Hold the wire as close to the end as possible.

Step 8



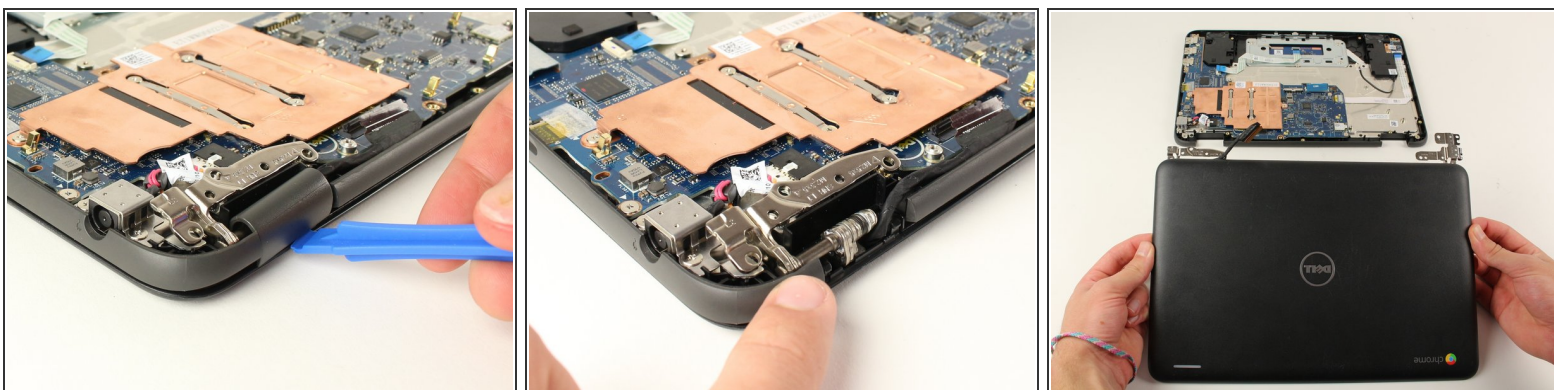
- Using a Phillips #0 screwdriver, remove the two 3mm Phillips head screws from the metal bracket that covers where the wrapped cable from the screen attaches to the motherboard.

Step 9



- Remove the screen connector cable. To do this, gently lift up on the black tab where the cable plugs into the motherboard.
- Once you have lifted the tab, gently pull the cable horizontally away from the motherboard connector to unplug it.

Step 10



- Using a plastic opening tool, remove the plastic hinge covers by inserting the tool into the gap and prying away from the computer.
- You should now be able to separate the screen assembly from the rest of the laptop.

Step 11



- Once it's separated from the rest of the computer, place the screen assembly face up on your work space.
- Using tweezers, remove all four stickers covering screws on the front. Stick these to the computer, a few inches from the screw holes.
- Using a Phillips #0 screwdriver, remove all four 3.5mm Phillips head screws from the front of the display assembly.

Step 12



- Using a plastic opening tool to start, and then eventually your hands, pry the front most face of plastic off of the screen assembly.

Step 13



- Using a Phillips #0 screwdriver, remove all four silver 3mm Phillips head screws that hold the screen tabs to the bracket.

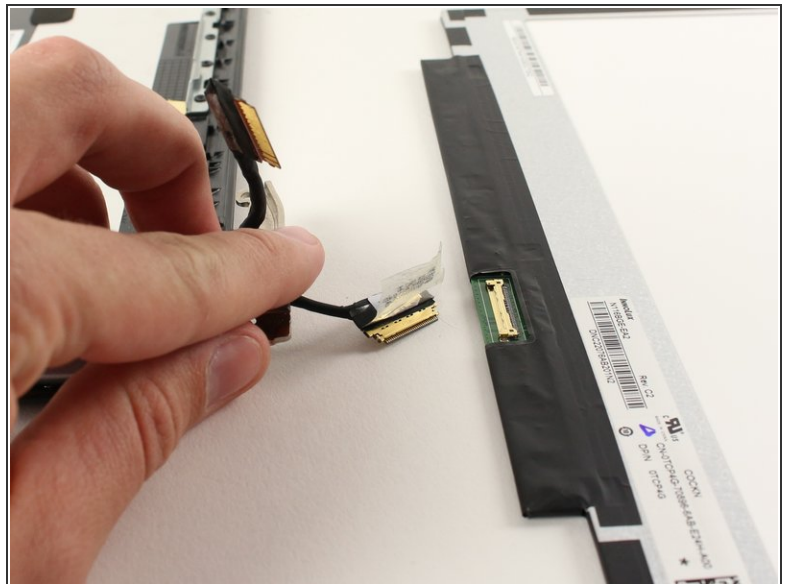
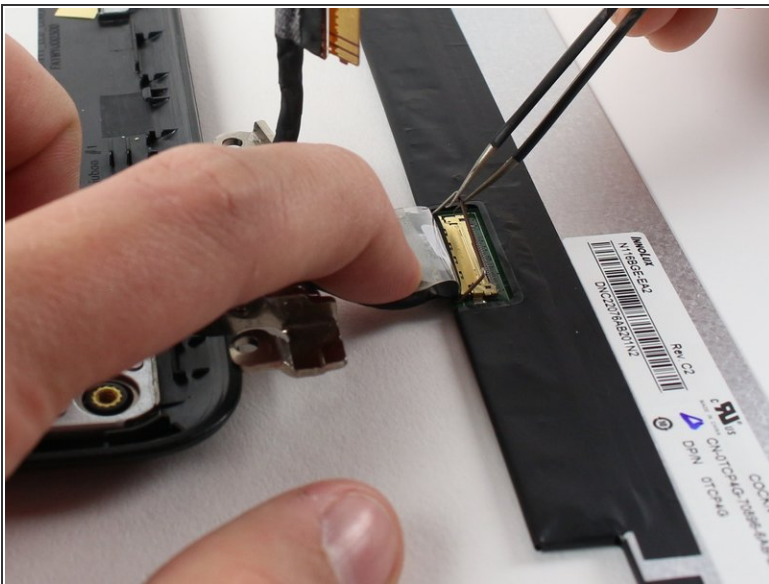
Step 14



- Lift the screen itself away from the rest of the assembly. Place it face down next to the rest of the assembly.

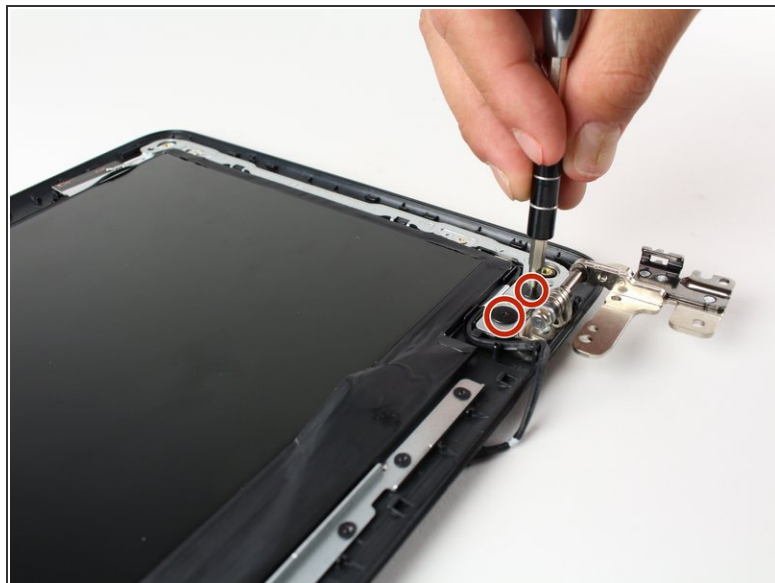
⚠ There will still be cables attached between the screen and the rest of the assembly. Make sure not to tug on them as this may cause damage.

Step 15



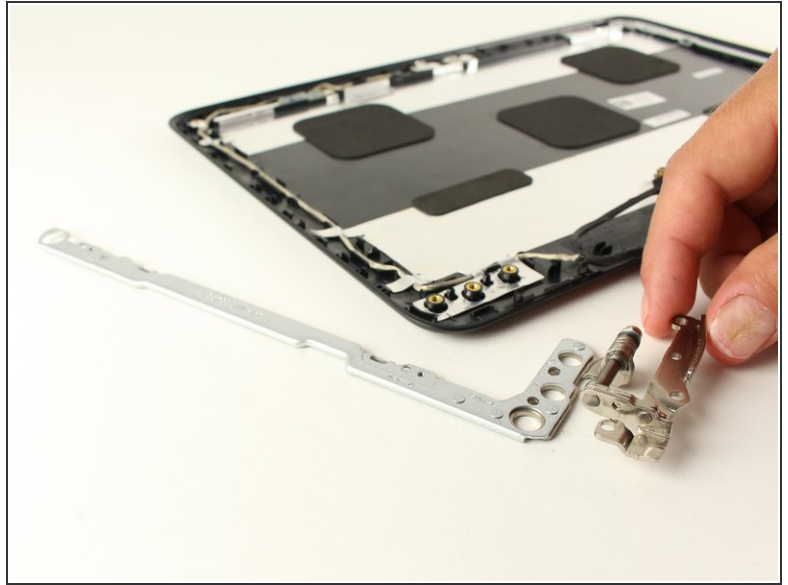
- To unplug the screen, use tweezers to lift the small metal wire on the connector, and then gently pull the cable away from the screen.

Step 16 — Display Hinges



- Using a Phillips #0 screwdriver, remove all four of 2.5mm Phillips head screws from the silver metal bracket.
- ⓘ Though the picture shows this step with the screen still in, you should remove the screen first and then remove this bracket.

Step 17



- Once the screws have been removed, use a plastic opening tool to pry the metal bracket and hinge assembly off of the plastic backing.

To reassemble your device, follow these instructions in reverse order.