



Samsung Galaxy Tab S2 8.0 Screen Replacement

Follow this guide if you need to replace your...

Written By: Jonathan Wood



INTRODUCTION

Follow this guide if you need to replace your Samsung Galaxy Tab S2 8.0 screen. If your screen is cracked or not displaying images as it should, replacing it will fix these problems.



TOOLS:

- [iFixit iOpener](#) (1)
 - [iFixit Opening Picks \(Set of 6\)](#) (1)
 - [iFixit Opening Tool](#) (1)
 - [Suction Handle](#) (1)
-

Step 1 — Screen



⚠ Working on a device that is turned on may yield an electric shock. Make sure your device is turned off before working on it.

- Apply heat using an iFixit iOpener or another heating gun in order to weaken the adhesive around the edges of the screen.

Step 2



- Insert the plastic opening tool into the gap between the screen and tablet in the location where you want to start removing the screen.
- Put an opening pick in the gap created, in between the screen and the panel.
- Repeat all around device, putting 2 picks on top and bottom, and one on each side.

This document was generated on 2023-01-29 04:20:32 AM (MST).

Step 3

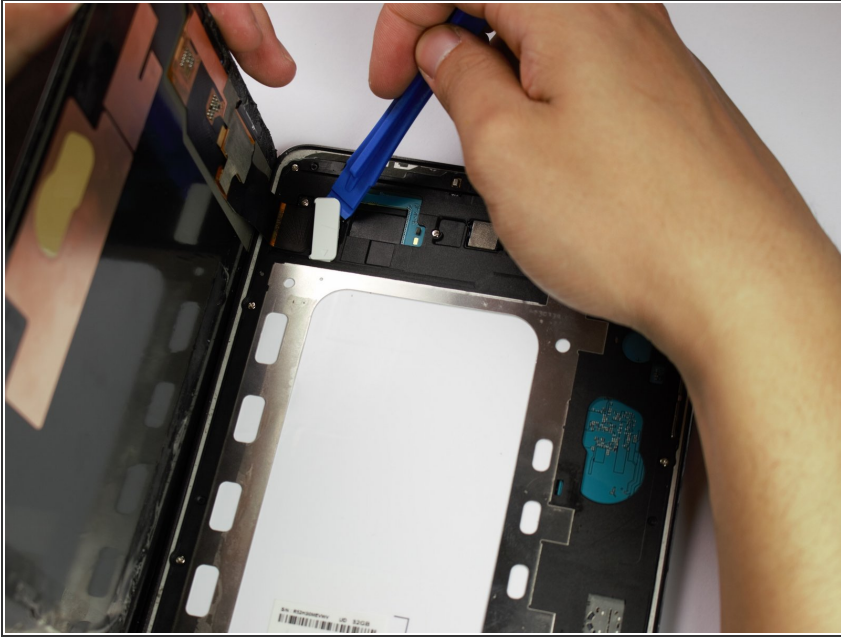


- Carefully remove the small suction cup from the corner without moving the screen.
- Place the small suction cup in the center of the screen and lift to remove screen.

⚠ Make sure to separate all glue under the middle parts of the screen as well as the edges - use a thin stiff card to slice through it. Avoid the ribbon cable. Do not attempt to lift the screen until all glue is separated.

⚠ The screen is still connected to the rest of the device by a cable, so don't pull the screen up too quickly.

Step 4



- Place the plastic opening tool underneath the ribbon cable connecting the screen to the tablet.
- Carefully lift the plastic opening tool to detach the ribbon from the tablet.

⚠ Make sure to discharge any static electricity by touching a grounded metal object, like a quarter, before touching the inside of the device.

Step 5



- The screen is now detached from the rest of the tablet.

To reassemble your device, follow these instructions in reverse order.