



Written By: David Troy



---

## INTRODUCTION

If you're having sound issues, your speakers may be broken. Follow these steps to replace them.

---

### TOOLS:

- [Phillips #1 Screwdriver](#) (1)
  - [Spudger](#) (1)
-

## Step 1 — Battery



- Turn the device so the screen is facing down.

## Step 2



- Slide the battery lock switch next to the power slider to the unlocked position.



## Step 3



- Slide and hold the switch by the fan vent to the unlocked position. Firmly grasp the battery and pull away from tablet.
- ☑ When replacing the battery, place the end near the fan vent in first. Make sure to keep the other switch in the unlocked position while pushing the battery into place.

## Step 4 — Bluetooth Module



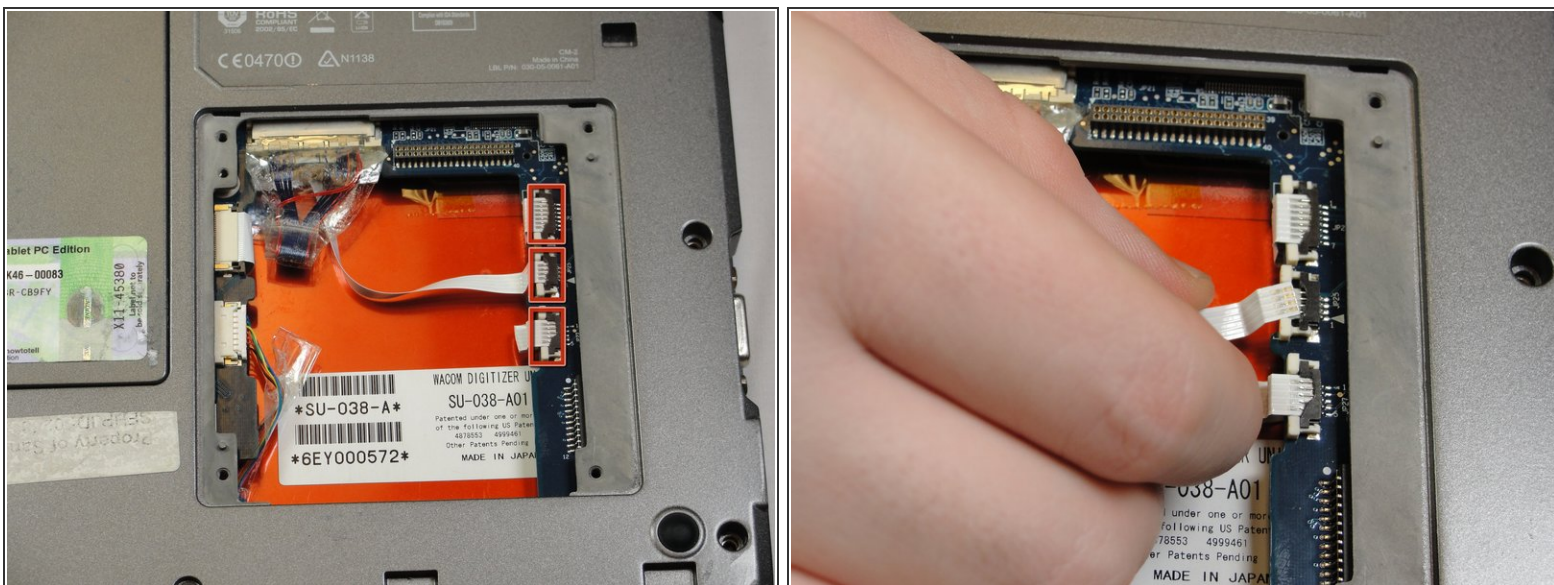
- Unscrew hard drive panel using a Phillips head #1 screwdriver.
- (Our device was not given to us with a hard drive or a hard drive panel)

## Step 5



- Pull clear plastic tab to detach hard drive from tablet.

## Step 6



- To disconnect the three white ribbon cables on the side closest to the hard drive connector, pull the white plastic tabs.



## Step 7



- Pull the brown tabs to disconnect the white ribbon cable on the other side.

## Step 8



Caution: do not pull on the wires, instead pull from the plastic connectors.

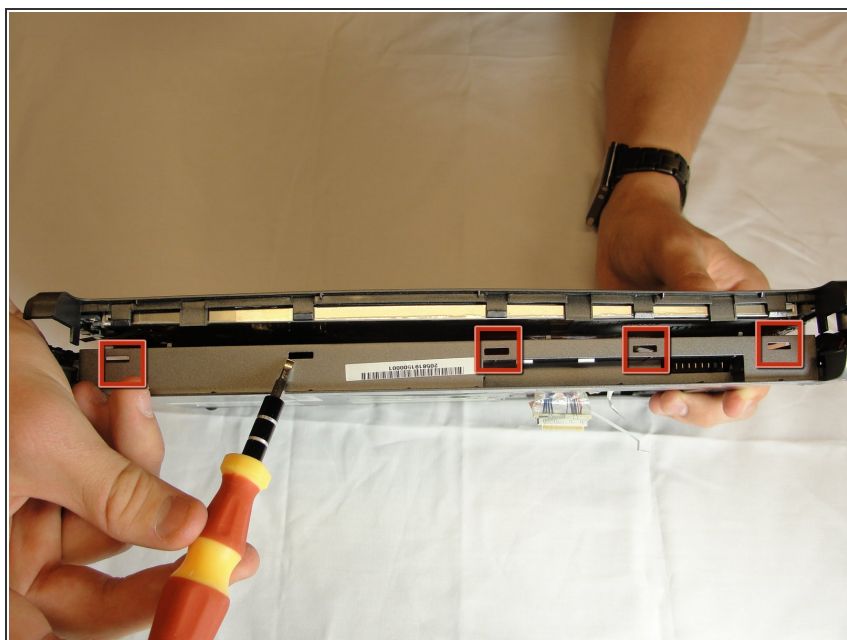
- To disconnect the remaining ribbon cables, pull the plastic connectors away from their connections.

## Step 9



- With a Phillips #1 screwdriver, Unscrew the nine 10mm screws holding the case together.

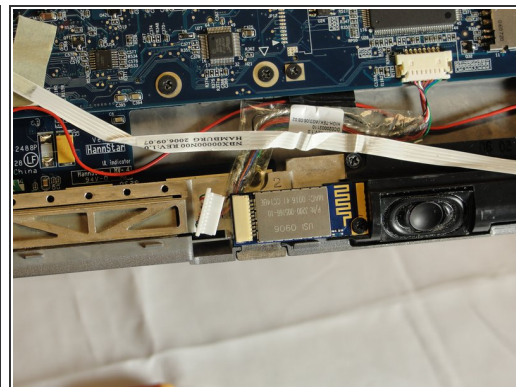
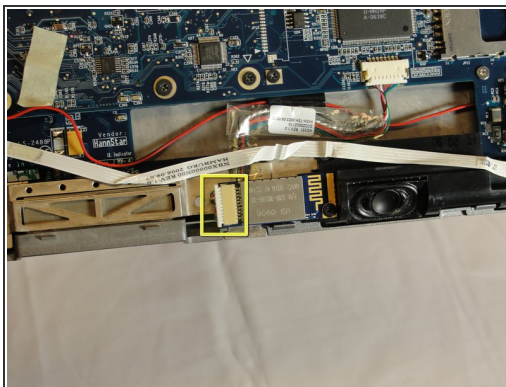
## Step 10



- Using a spudger, press in the five tabs on the side where the battery was.
- This should separate the two halves of the device. Carefully set the side with the display off to the side.

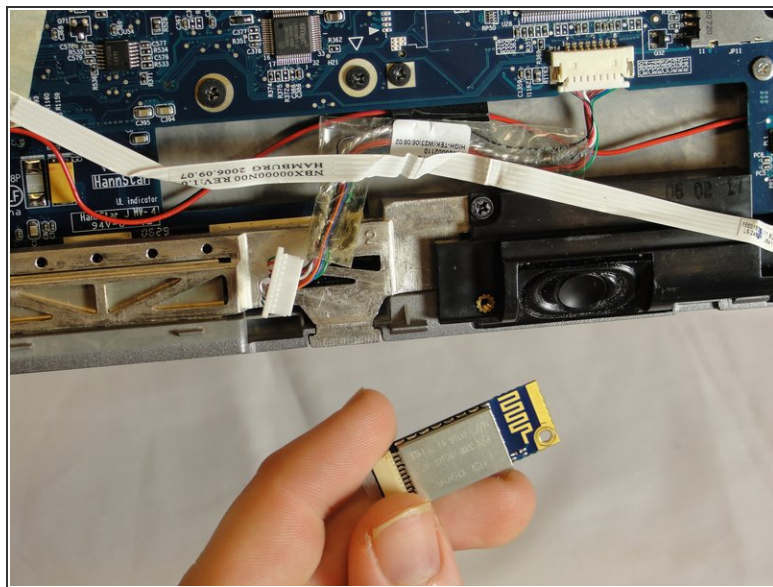
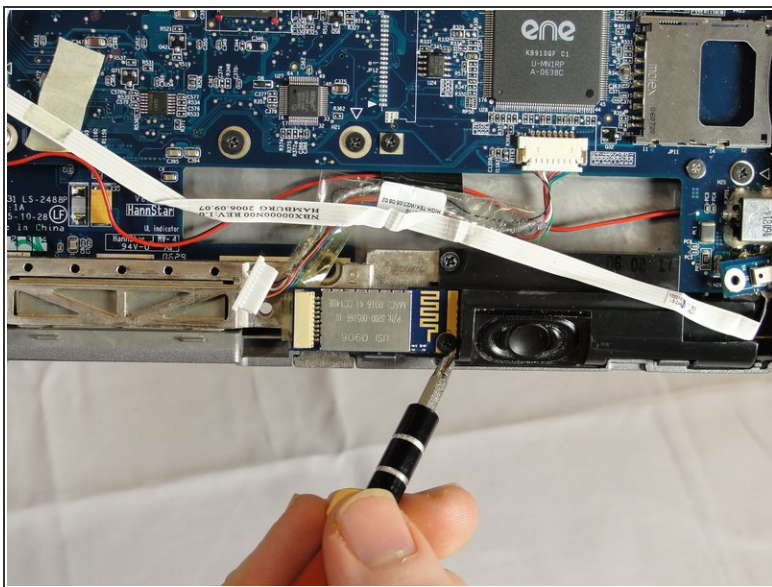


## Step 11



- Locate the Bluetooth board.
- Disconnect the ribbon cable by pulling on the plastic connector.

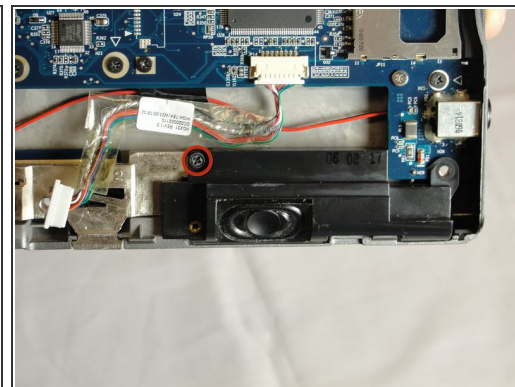
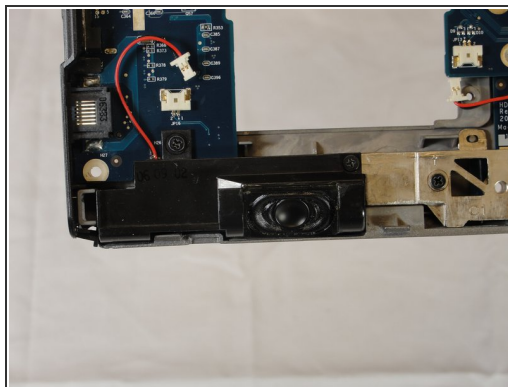
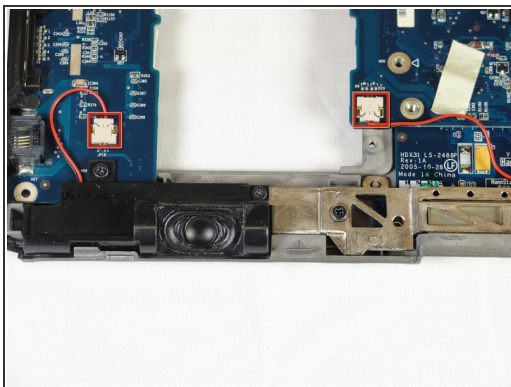
## Step 12



- Unscrew the 4mm screw holding the board onto the tablet.
- Lift the board out of the tablet and carefully set it aside.

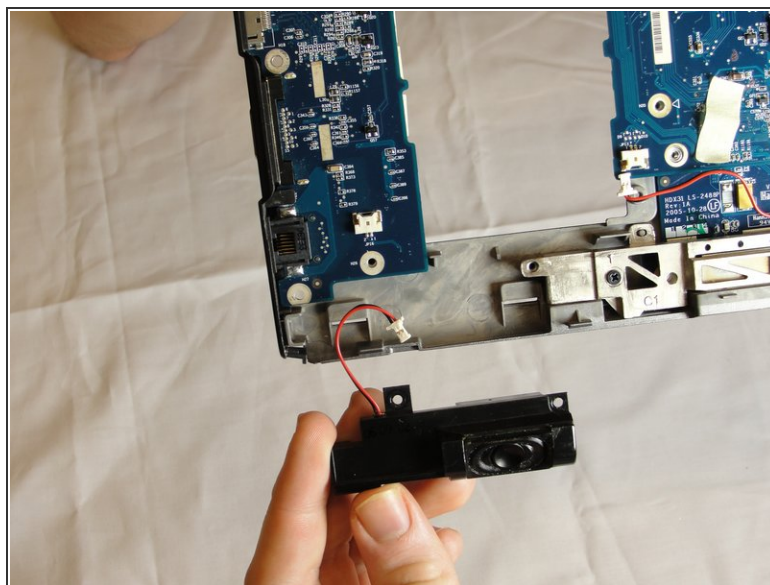
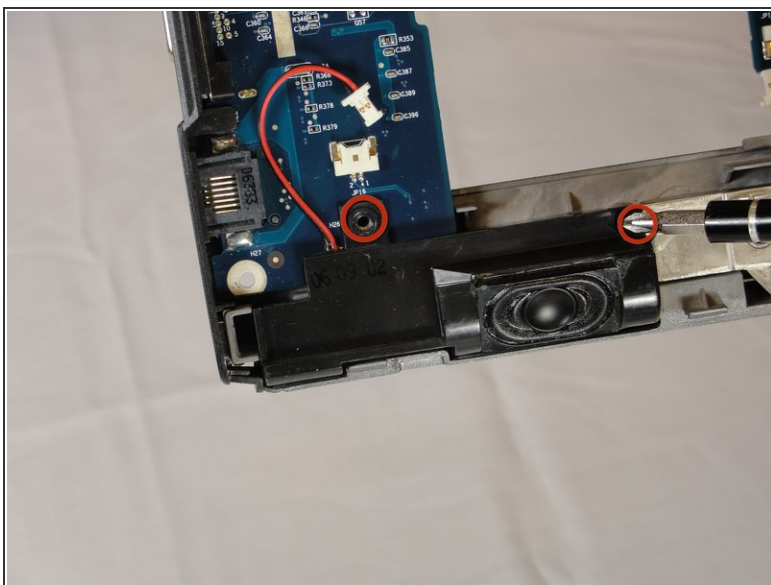


## Step 13 — Speaker Modules



- Locate speaker connectors on tablet and unplug them by pulling on the plastic heads.

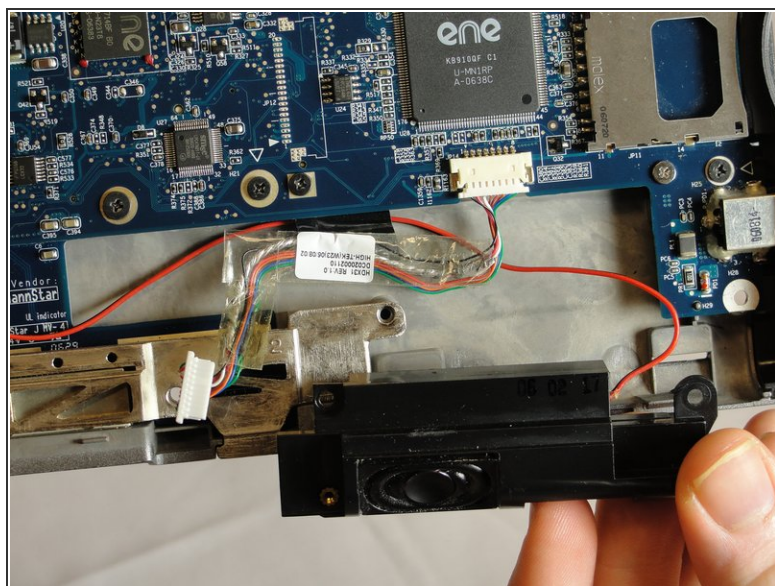
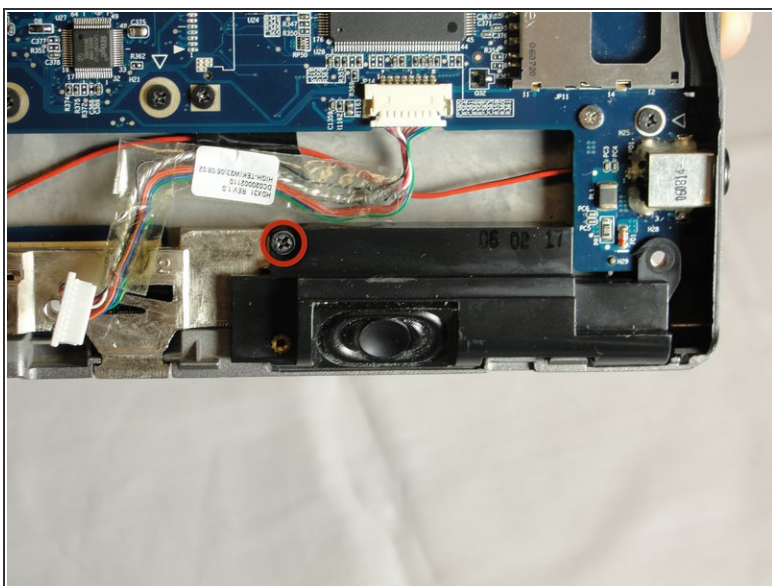
## Step 14



- To remove the speaker near the network port, unscrew the two black 4mm screws securing it to the tablet and pull away.

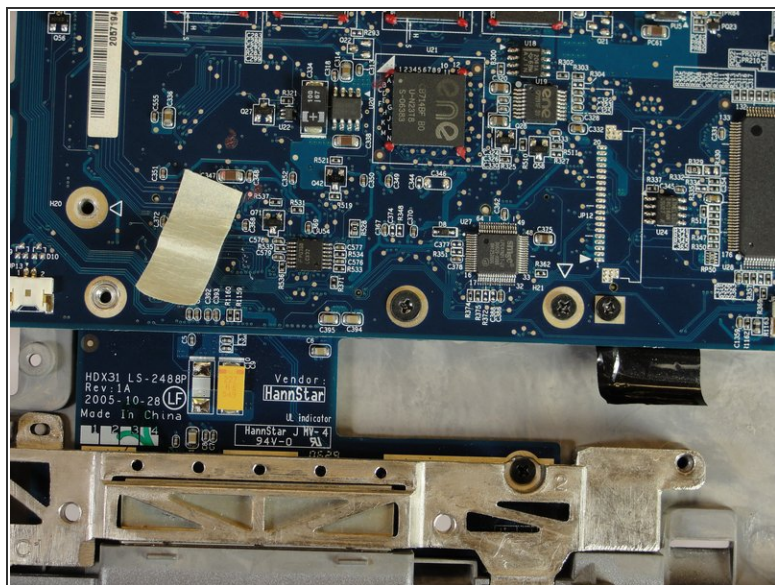
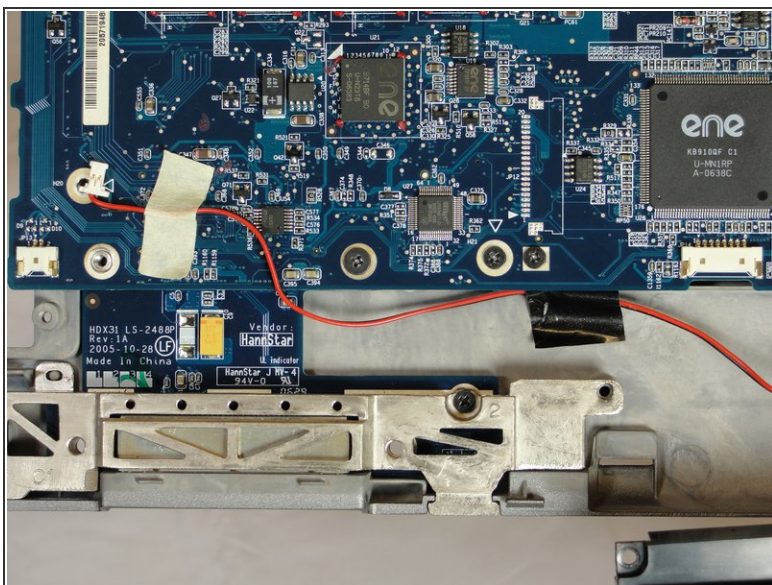


## Step 15



- To remove the speaker near the headphone jack, unscrew the one 4mm black screw securing it to the tablet.

## Step 16



- Unstick the white masking tape and the black electrical tape holding the black and red wire down.
- Pull out the wire and speaker.



To reassemble your device, follow these instructions in reverse order.