

[illegible]

INTRODUCTION

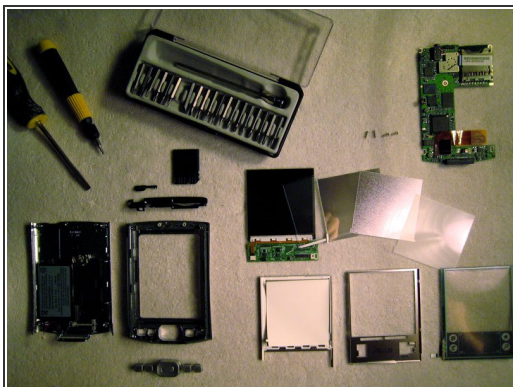
Curious about what's inside your Palm Pilot? This teardown shows step by step how the Tungsten E was taken apart. Further investigation into the nitty gritty rendered it useless, but it revealed how one might replace the battery, replace the screen or clean out the keypad if you spill something sticky in it. Enjoy!!



TOOLS:

- [Fingers](#) (1)
 - [T6 Torx Screwdriver](#) (1)
-

Step 1 — Tungsten E Teardown



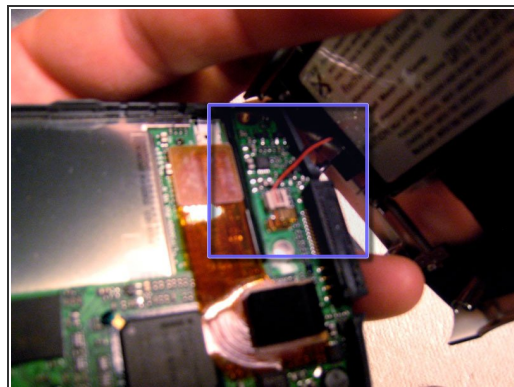
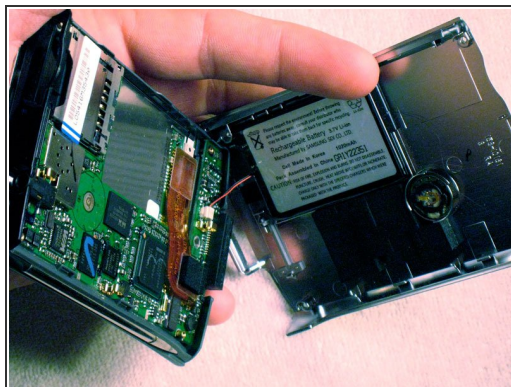
- There are quite a few parts to keep track of. While many of these parts will easily snap back into place, there are several that result in "oops" and will probably make your Palm useless. Proceed with caution!!

Step 2



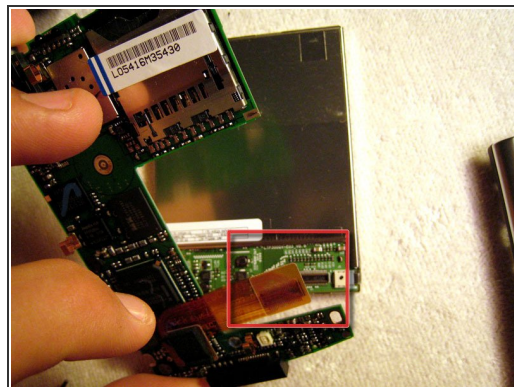
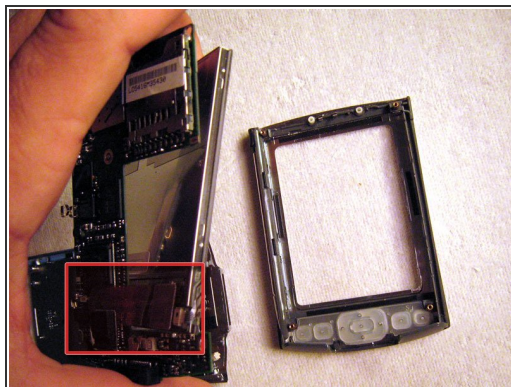
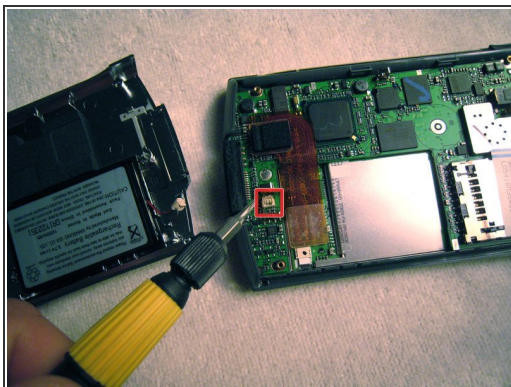
- There are four T6 screws on the backside of the Palm which must be removed for access into the inner workings. The tool is a T6 screwdriver, available in the parts store. Either purchased separately as the [T6 Torx screwdriver](#) or as a kit in the 20 Piece Bit Driver Kit.

Step 3



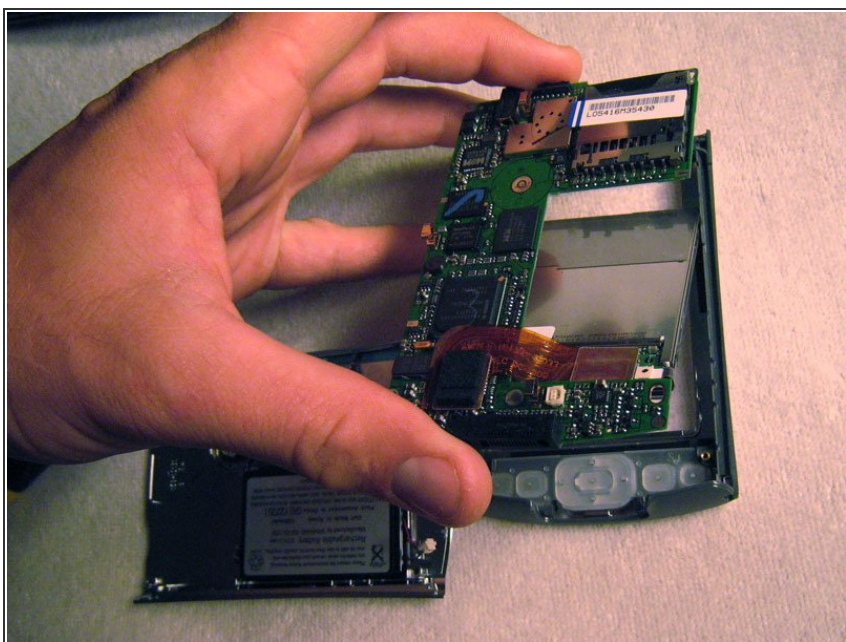
- To detach the back cover use your fingernail to gently pry the top edge. It will come apart like a clamshell. Be careful for the red and black cord attaching the two pieces. This is the battery cable. Use your fingers to unclip the cable connector from the circuit board. The battery is glued to the back cover.

Step 4



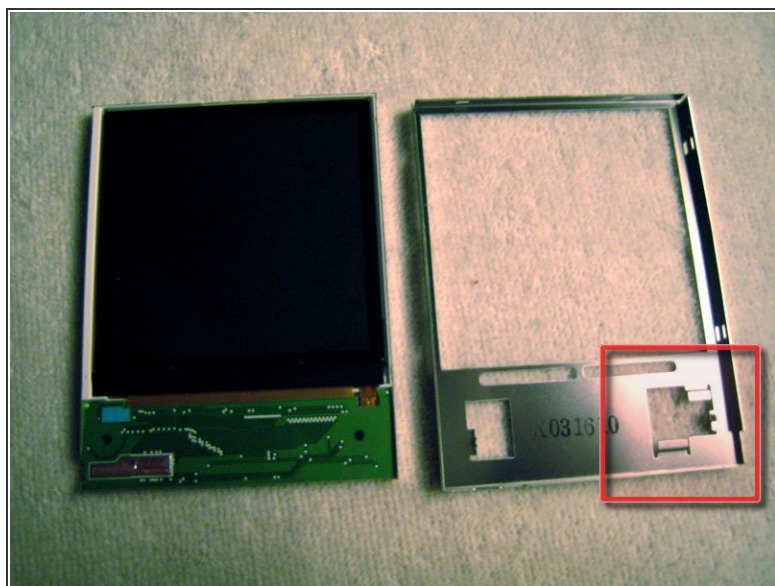
- The back panel has been removed, note the small red rectangle which highlights the battery terminal. The circuit board and the screen can now be separated. They are connected by the brownish flat cable which is clipped into the clip on the screen. Unclip and proceed.

Step 5



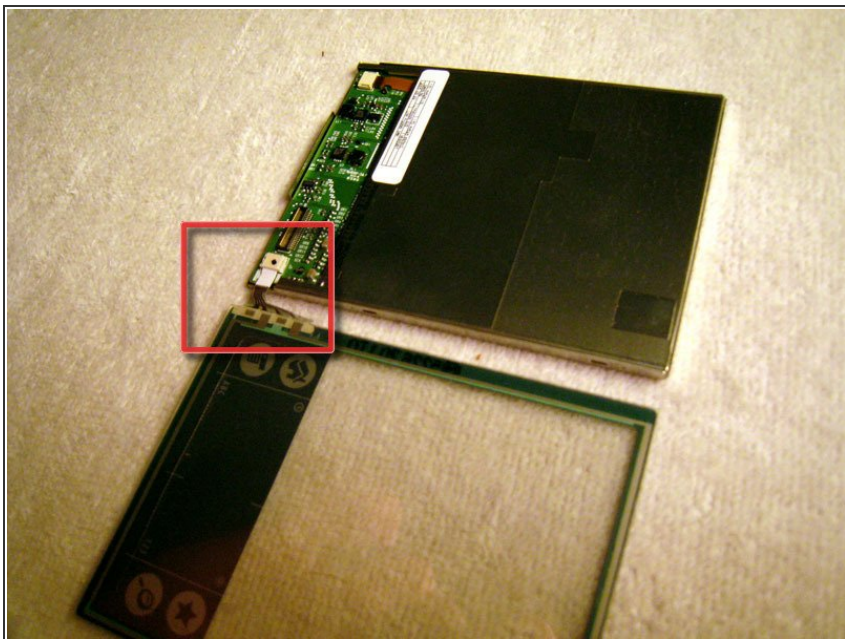
- Seen in this photo is the clear keypad. You might want to clean this off if you've spilled a soda on it or otherwise got it sticky.

Step 6



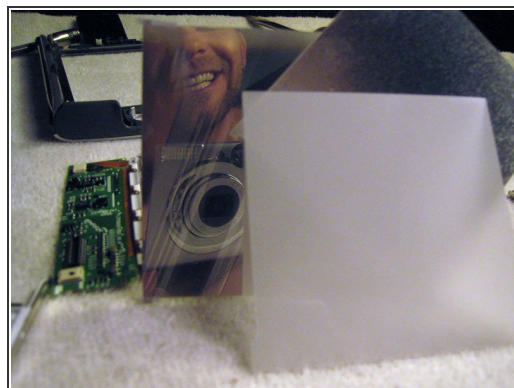
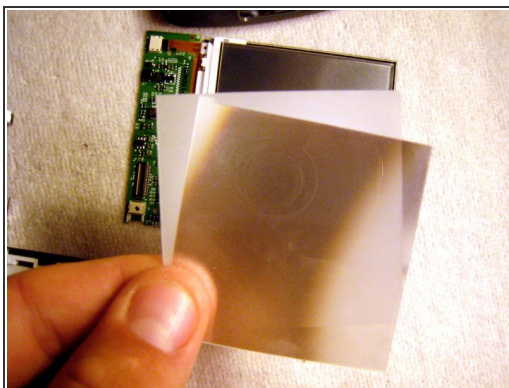
- The screen is sandwiched in a metal case. It didn't seem clipped together but it was a snug fit. I pushed on the circuit board through the cutouts in the metal to pry the pieces apart.

Step 7



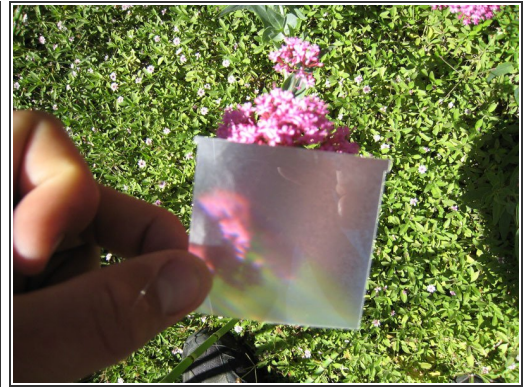
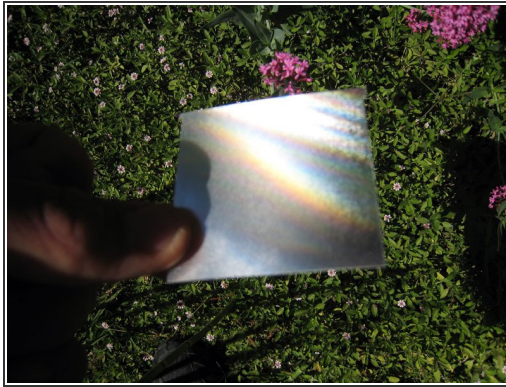
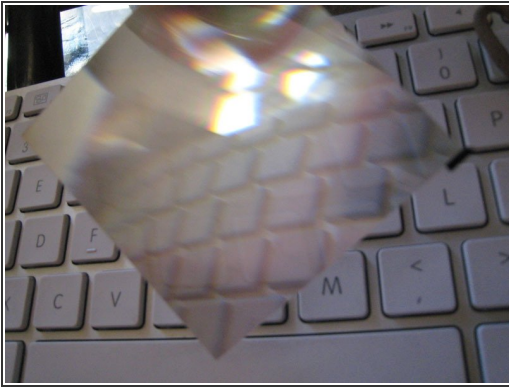
- The touchscreen part of the screen assembly is glued to the LCD panel. It will peel off. Notice the cable connecting the two. It pulled out and I couldn't figure out how to make it stay again. Pulling out is NOT a good method!!!

Step 8



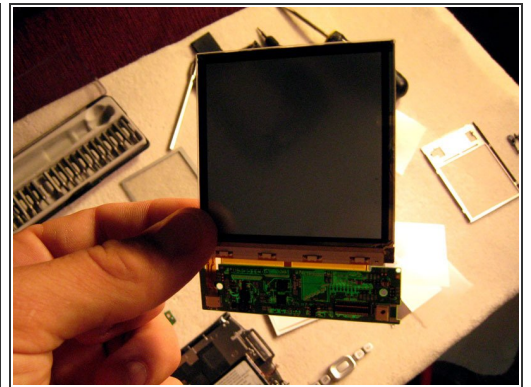
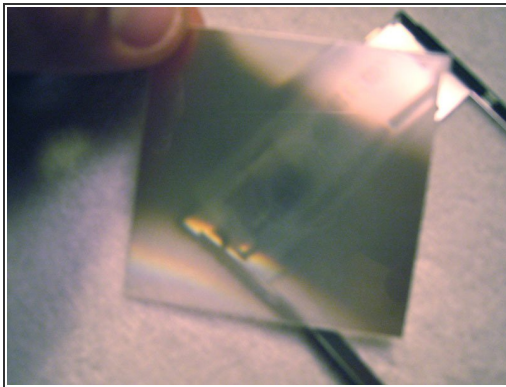
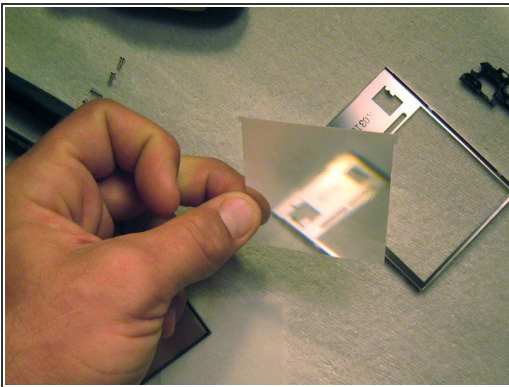
- There are about 6 layers which make up the screen. A clear hard plastic, a shiny flimsy opaque one, a polarizing film, and a really nifty one that either magnifies or reflects depending on the lighting.

Step 9



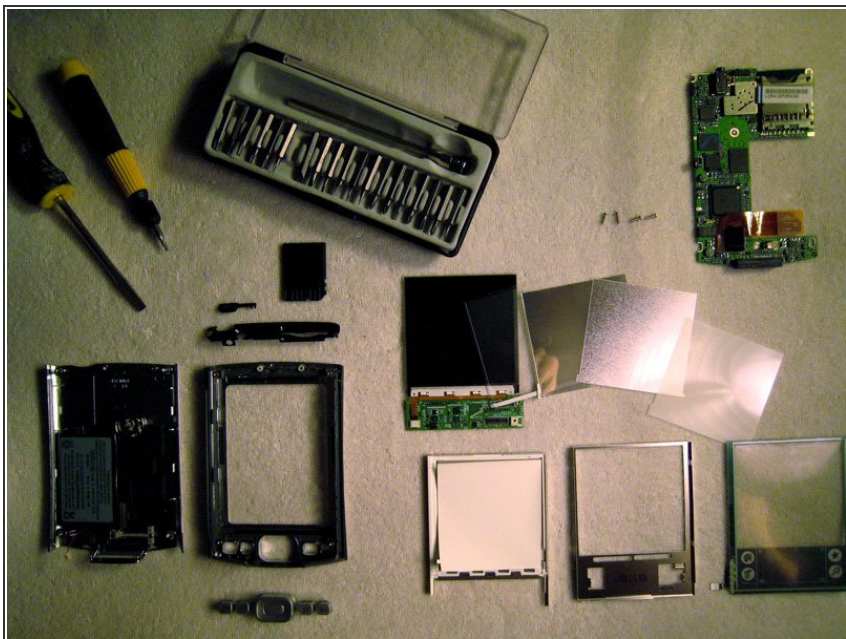
- fun with the films

Step 10



- more fun with the films and a shot of the screen.

Step 11



- The final discombobulation of fully non-functioning bits and pieces. The sum of all its parts was never as purdy. To the recycle bin. Bye bye!!

To reassemble your device, follow these instructions in reverse order.