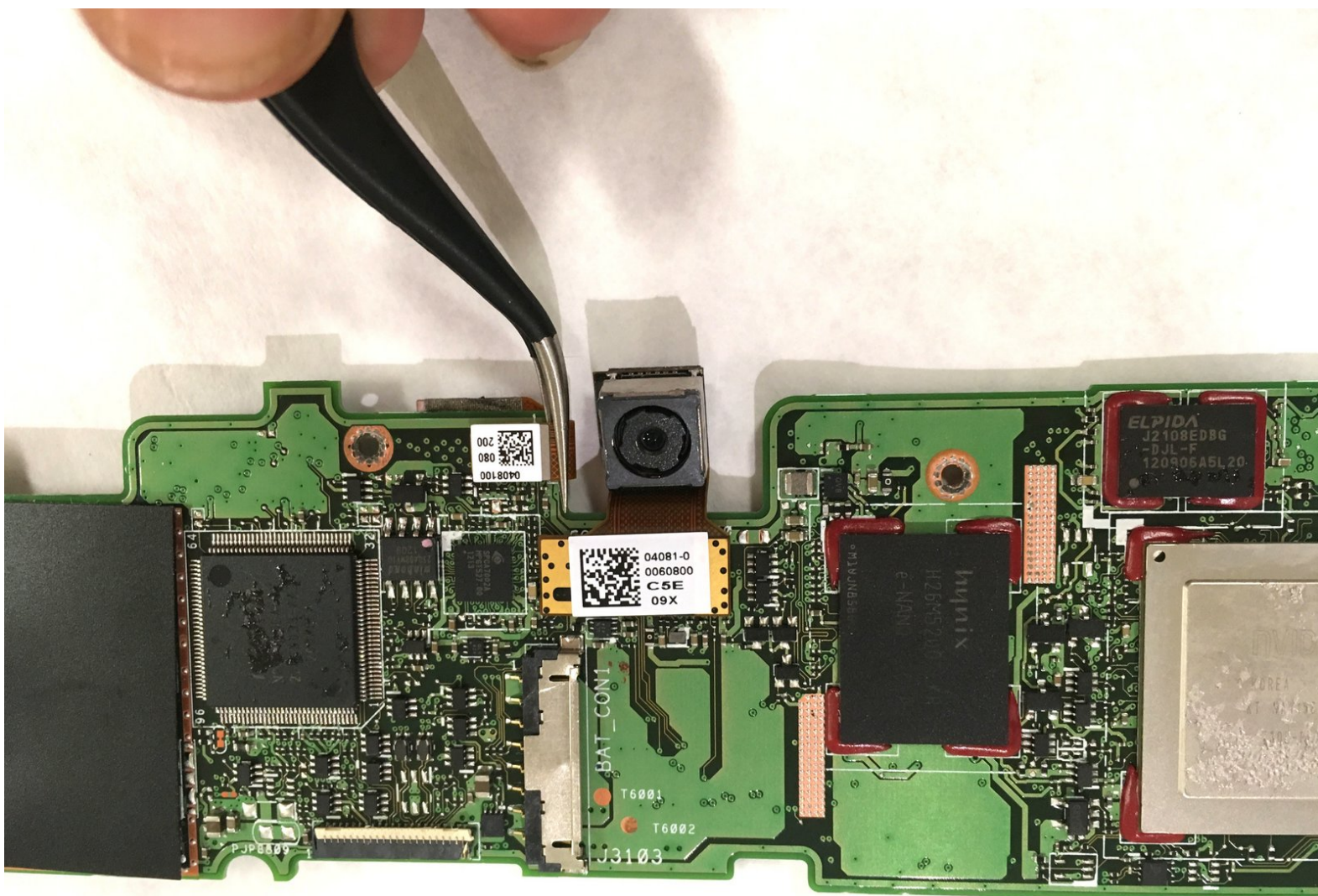




Asus TF300T Tablet Front Facing Camera Replacement

This guide details the removal of the front facing camera for replacement.

Written By: Emma Sloan



INTRODUCTION

The front facing camera is protected by the screen but if the screen is broke , it might affect the front facing camera. A quick replacement of front facing camera can help the user in the future.



TOOLS:

- [Phillips #00 Screwdriver](#) (1)
- [iFixit Opening Tools](#) (1)
- [Tweezers](#) (1)



PARTS:

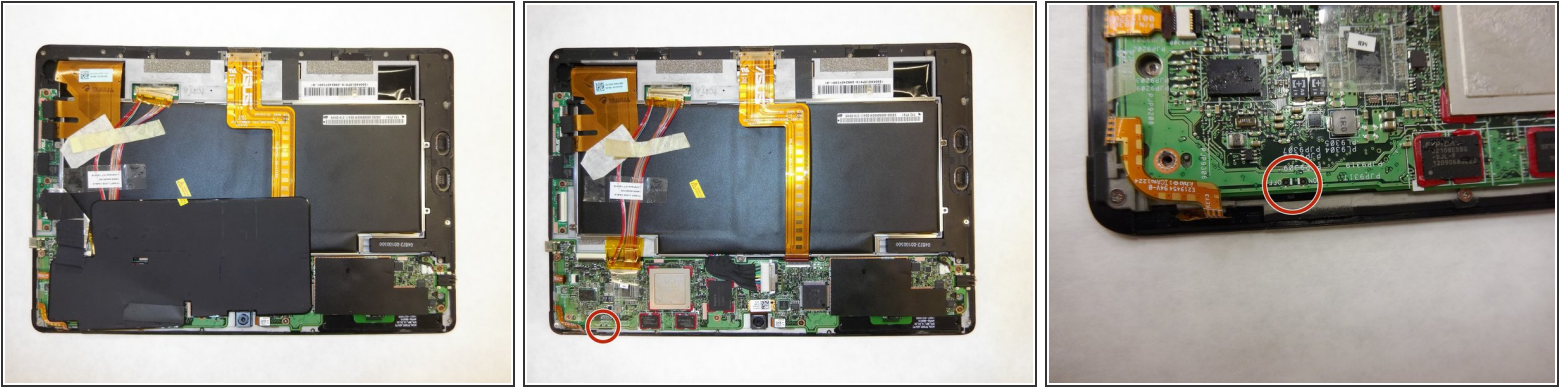
- [ASUS Transformer Pad \(TF300T\) Front Facing Camera](#) (1)

Step 1 — Front Facing Camera



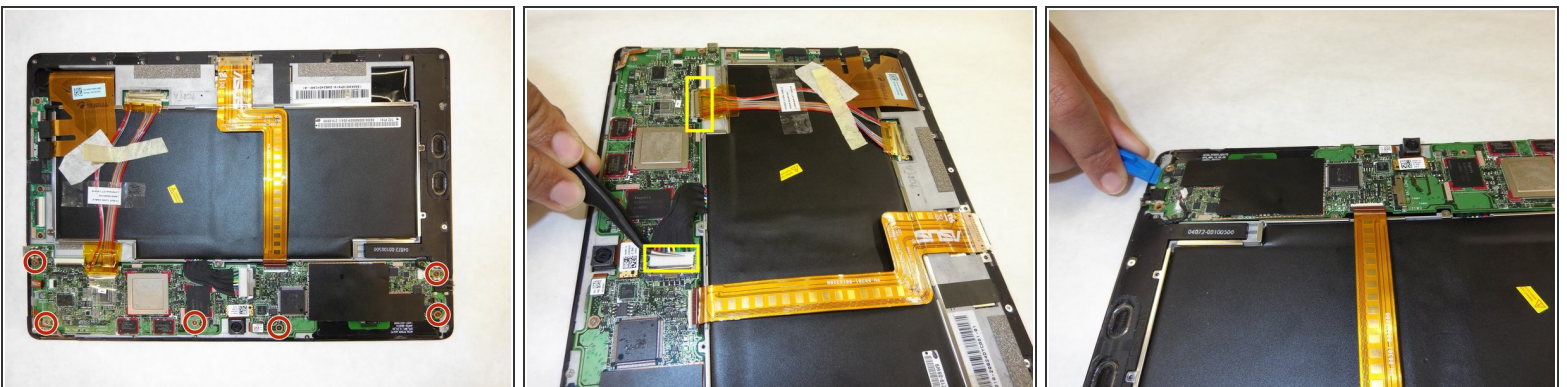
- Disconnect the dock and make sure the power is turned off.
- Use plastic opening tool to pry screen up and remove the main tablet body from outer rim casing.
- Be gentle with the plastic opening tool near charging port. The thinner plastic may break easily.

Step 2



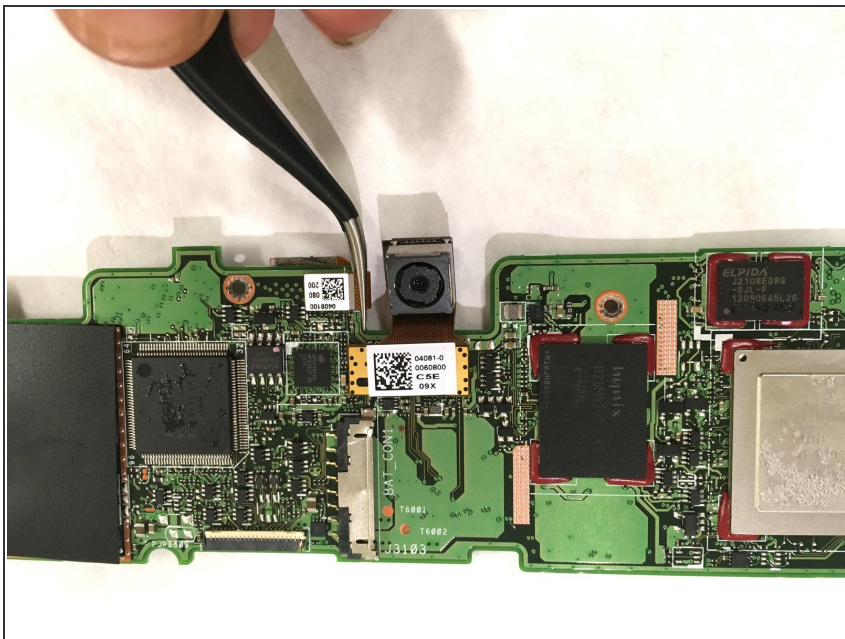
- Pull up on the black circuit board protector.
- Turn off the hard power switch before working with the tablet. Use plastic tool to slide the switch to the position marked "off".
- ⓘ For most of the replacement operation, you do not have to remove the battery once you turned off the switch. Make sure that you do not short anything with the metal tools.

Step 3



- Use a Phillips #00 Screwdriver to remove the six 3mm screws that connect the upper part of the motherboard.
- Use tweezers to remove red connecting wires. Remove the motherboard by lifting it upward.

Step 4



- Use tweezers to pull out the gold flap connected to the front camera.
- Pull the disconnected gold flap to take out the camera.

To reassemble your device, follow these instructions in reverse order.