



Asus ROG G750JS keyboard (palmrest)

Replacement

How to detach and reattach palmrest part (the plate with keyboard, touchpad, power button etc.)

Written By: [hornikmartinrepair](#)



INTRODUCTION

How to detach and reattach palmrest part (the plate with keyboard, touchpad, power button etc.)



TOOLS:

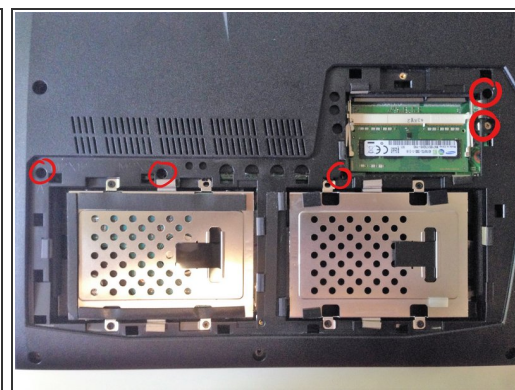
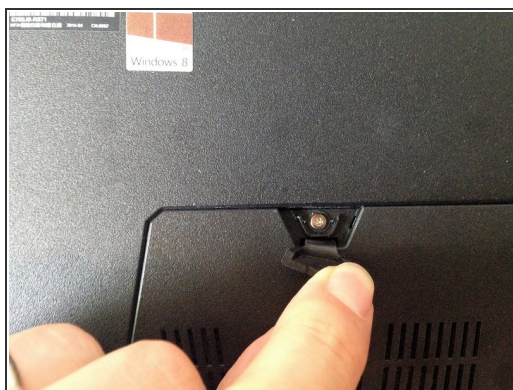
- [Mako Driver Kit - 64 Precision Bits](#) (1)
 - [iFixit Opening Tools](#) (1)
 - [Tweezers](#) (1)
-

Step 1 — pull out battery



- Flip the laptop
- Unlock and pull out the battery

Step 2 — unscrew back panel access



- Locate and unscrew the screw under the rubber cover
- pop out the plastic cover
- unscrew 5 screws marked in the picture (keep the screws separated by length and color)

Step 3 — unscrew the outer screws



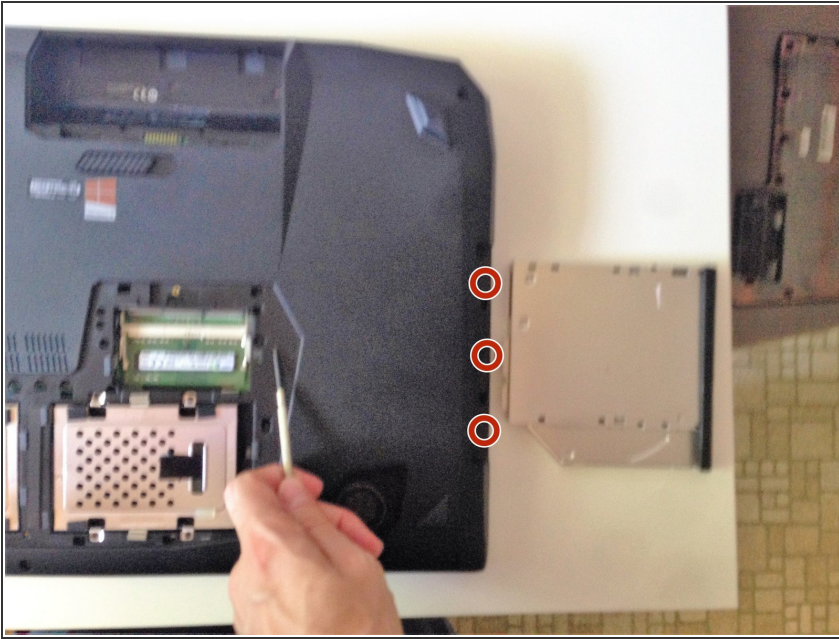
- pop out the rubbers plugs (7) around the laptop
- unscrew screws under the plugs

Step 4 — remove screws under battery



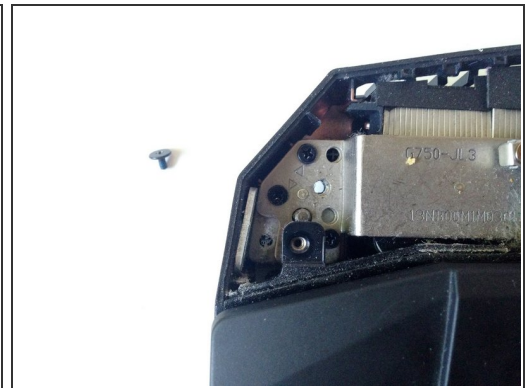
- remove 5 screws from the battery panel

Step 5 — remove optical drive



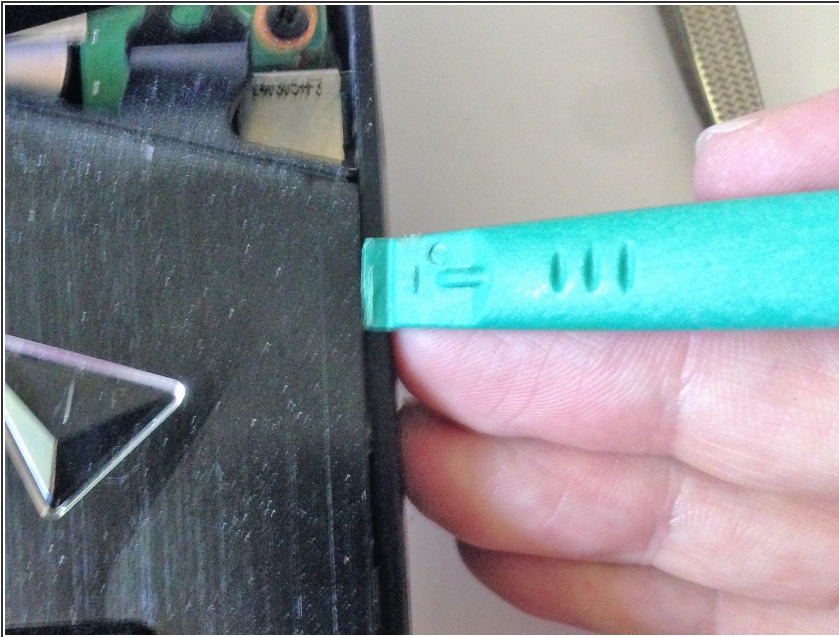
- If you have removed screw C in step 3 (pointed at in the picture) you can pull out the optical drive
- remove all 3 screws revealed by removing the drive

Step 6 — remove speakers



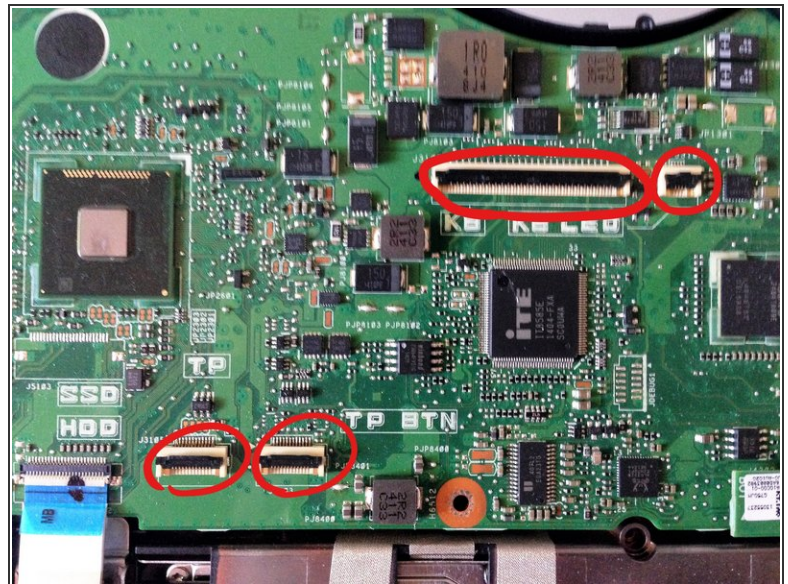
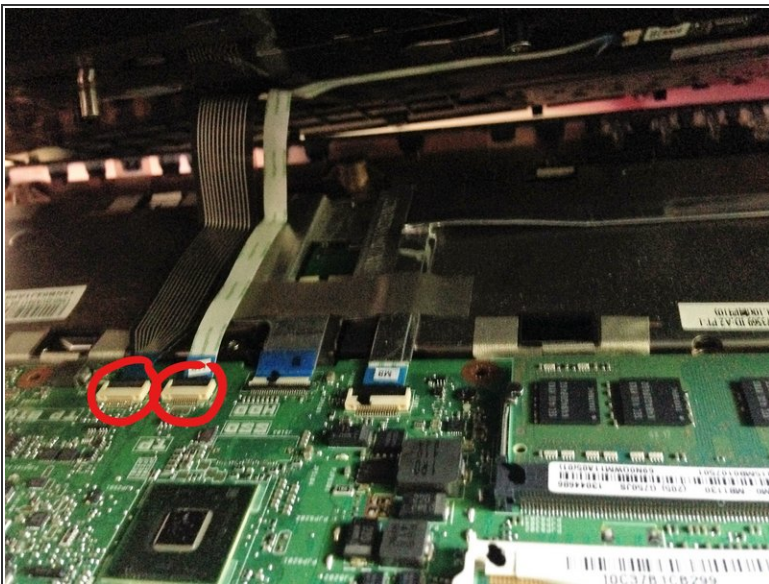
- flip laptop
- pop open the speaker part
- unplug speakers
- remove 1 black screw on both sides

Step 7 — pop out the front plate



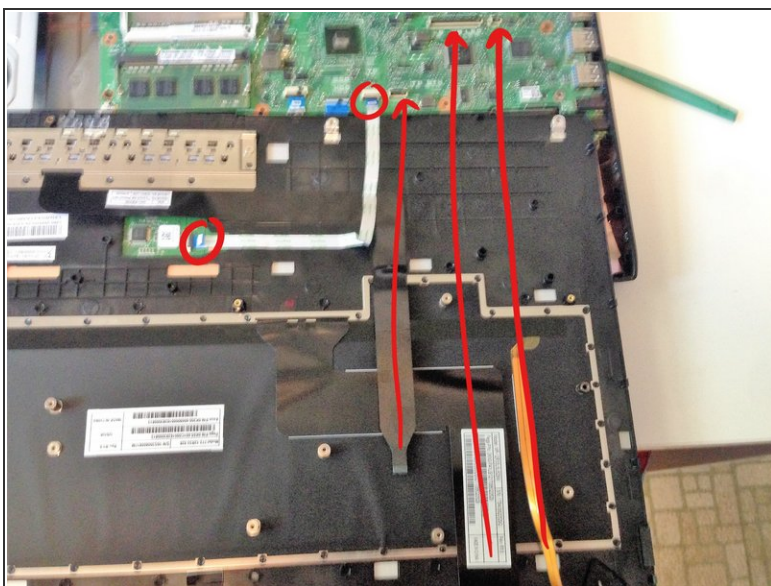
- using a plastic prying tool separate the front plate(keyboard) from the rest of the laptop

Step 8 — detach the keyboard



- gently lift the front plate
- detach all four ribbons connecting the front plate to the motherboard
- keep the light colored ribbon (it can be detached from the front plate as well)

Step 9 — connect and push in the new part



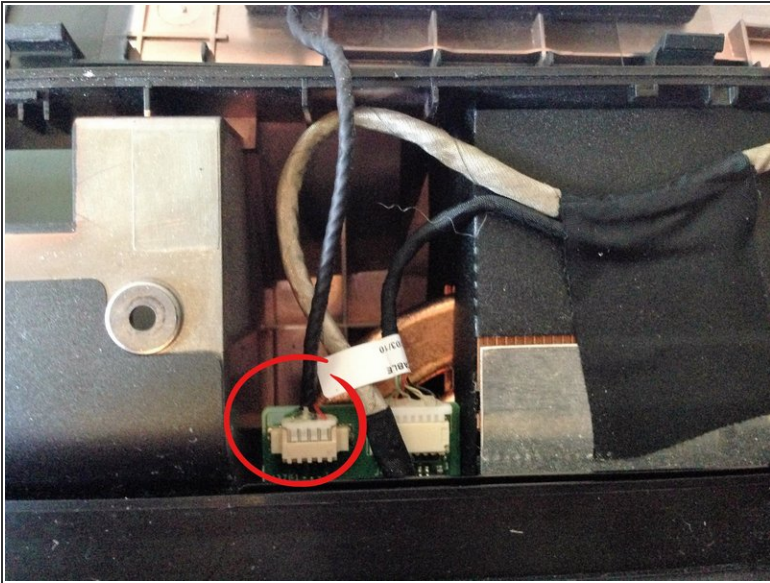
- connect the new front plate in the same spots as the old one
- if needed reconnect the light colored ribbon on both the front plate and the motherboard
- push the new plate back in place, make sure all sides are in

Step 10 — put back the black screws



- put back the black screws holding the front plate

Step 11 — reconnect and close the speaker panel



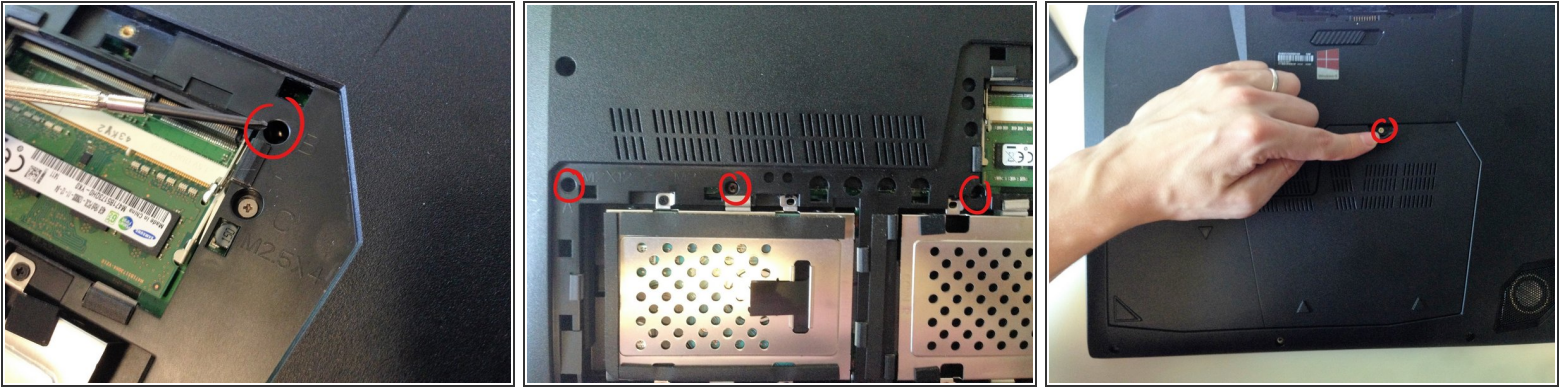
- reconnect the speakers
- push in place the whole speaker panel

Step 12 — put back the optical drive



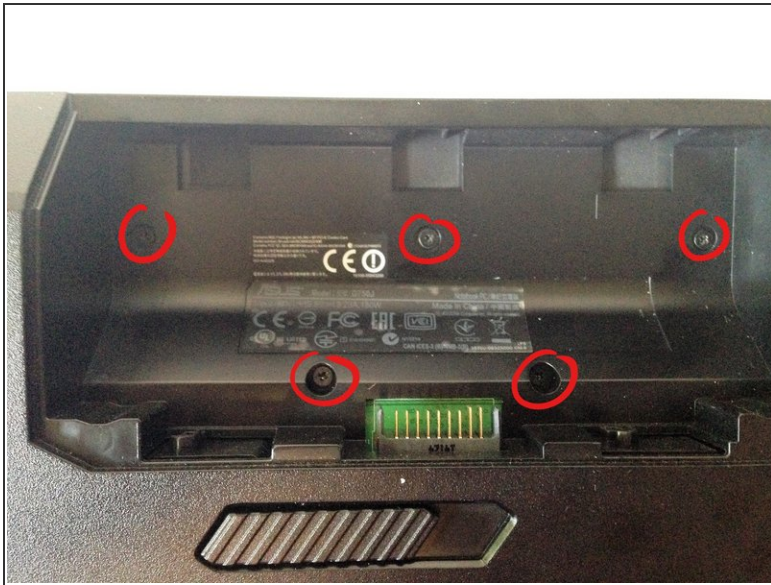
- screw back the 3 screws in the optical drive slot
- slide in the drive
- secure with screw C (circled in second picture)

Step 13 — return back panel



- put in place all screws in the back panel
- the screw on the very left is the longest
- push back in the plastic cover
- return the silver screw covered by the rubber cover

Step 14 — put back in the battery



- screw in the last 5 screws in the battery panel
- push back in the battery
- done!

To reassemble your device, follow these instructions in reverse order.