



Replacing Nikon Coolpix L20 LCD

This will show how to replace the LCD on a Nikon Coolpix L20

Written By: oldturkey03



INTRODUCTION

Use this guide to replace the LCD.



TOOLS:

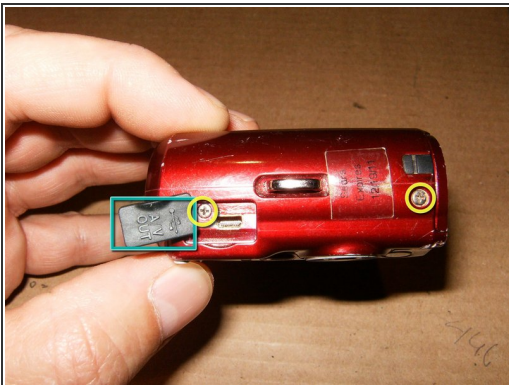
- [Phillips #00 Screwdriver](#) (1)
-

Step 1 — LCD



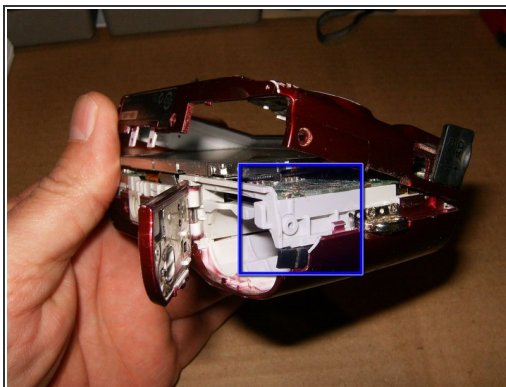
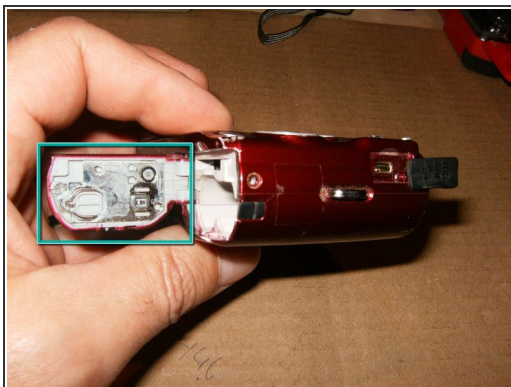
- Okay, so here is Nikon Coolpix L20 purchased for \$8.00. Only issue identified is an obviously cracked LCD screen

Step 2



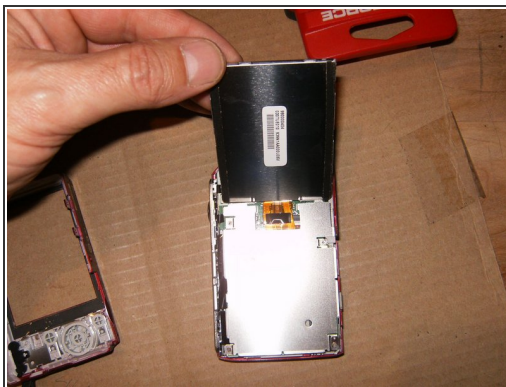
- Open the USB cover
- Remove the two Phillips screws on this side.
- Remove the one Phillips screw the left side
- Remove the three Phillips screws on the bottom

Step 3



- Open the battery cover.
- Separate the rear cover from the front by simply gently pulling the two halves apart. You may have to use your fingernails to separate them. Start at the bottom side, by the AC Power cover. Work your way around the bottom.
- Once the bottom part of the halves is released, gently pull the back cover in an upward motion. The top is secured by some tabs to the front part.

Step 4



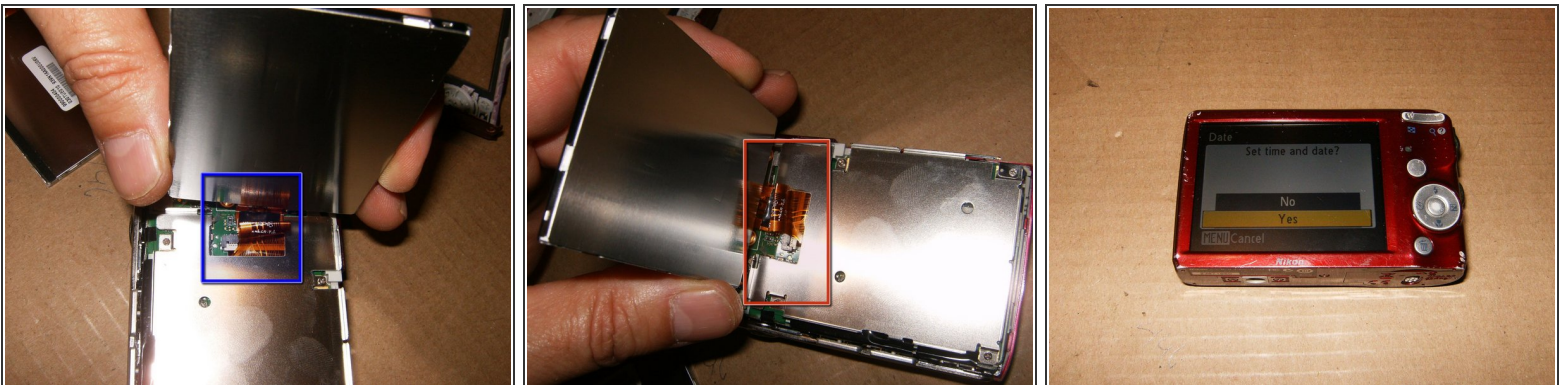
- With the halves separated, you are now looking at the LCD in the bracket unit.
- gently fold the LCD toward the ribbon cable out of the bracket unit. DO NOT try to remove the LCD or to loosen the cable.
- Remove the four screws from the bracket unit.

Step 5



- When you remove this screw, make sure that the shield plate on top of the bracket plate, is just slightly pushed out of the way. This will free the bracket plate.
- After the removal of the bracket plate, you have access to the connector. Move the white clip gently to the lift (upright) position, to free the cable.
- The LCD should now easily separate from the logic board.

Step 6



- For the reassembly, the trickiest part is to bend the LCD ribbon cable so that it fold under the LCD into the bracket unit.

⚠ Use caution and patience so as to not cut the cable on the bracket unit.

- After reassembly, you should hopefully have the same result as I did. Total cost \$8.00 for the camera, \$15.00 for the LCD and one hour of my time...

To reassemble your device, follow these instructions in reverse order.