



# HP Chromebook 11 G3 Screen Bezel Replacement

Remove the Screen Bezel of the HP Chromebook 11 G3.

Written By: Rahul Goyal



## INTRODUCTION

This guide walks through removing the display assembly and opening the screen bezel. It requires removing the keyboard mount. It requires using a Phillips head screwdriver, a plastic opening tool, and a spudger to finish removal.



### TOOLS:

- [iFixit Opening Tools](#) (1)
  - [Tweezers](#) (1)
  - [Phillips #00 Screwdriver](#) (1)
  - [Spudger](#) (1)
-

## Step 1 — Keyboard Mount



- Flip the laptop upside down so that the lid lies flat on the table.
- Remove the nine 6mm Phillips #00 screws that line the border.

## Step 2



- Remove the two rubber feet closest to the hinge using tweezers.
- Remove the two 6mm Phillips #00 screws revealed under these rubber feet.
- ⓘ The rubber feet may tear while removal; preventing this can be difficult, but it won't harm the laptop. If desired, replace these rubber feet during reassembly.

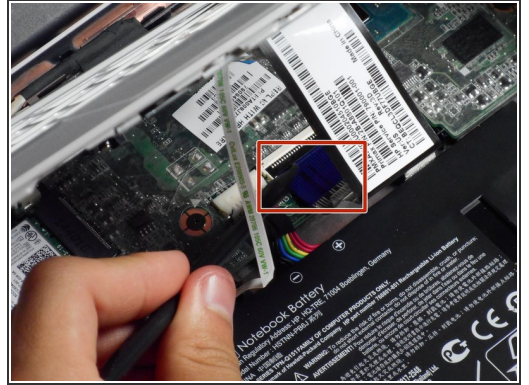
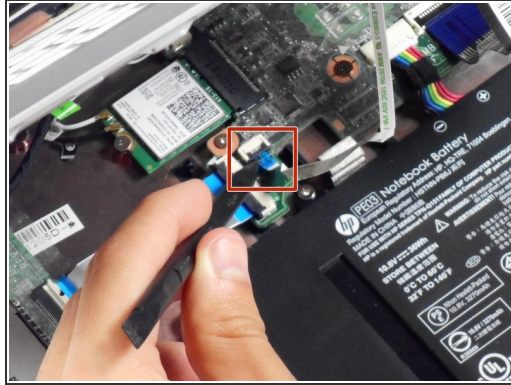
## Step 3



- Flip the laptop so it is in the upright position.
- Open the lid.
- Unsnap the keyboard mount along the border of the laptop using a plastic opening tool.
- ⓘ This may require more force than expected. Hearing loud clicks as the plastic opening tool slides along the seam is normal.



## Step 4



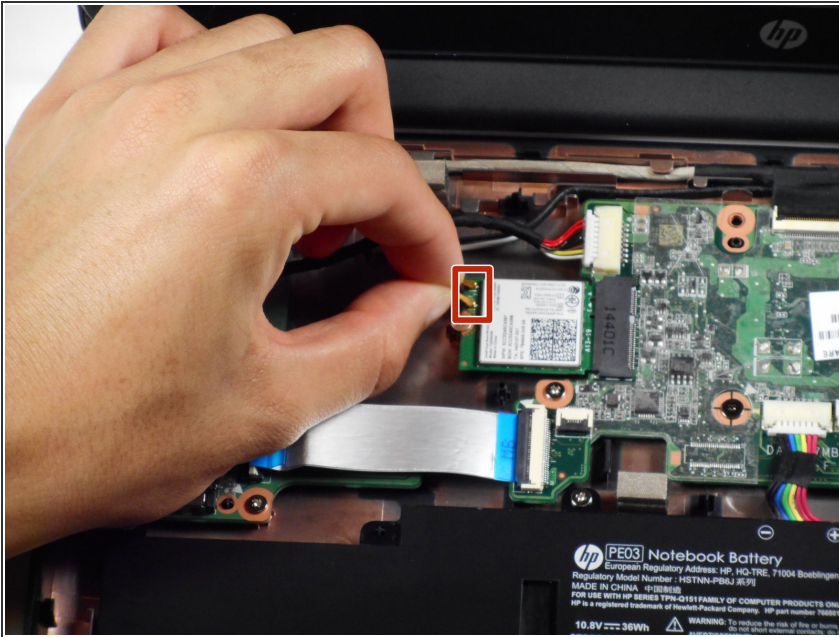
- Tilt the keyboard mount up.
- Use a spudger to flip up the two ZIF connector retaining flaps for the ribbon cables that connect the keyboard mount to the motherboard.
- Gently remove both ribbon cables.

## Step 5



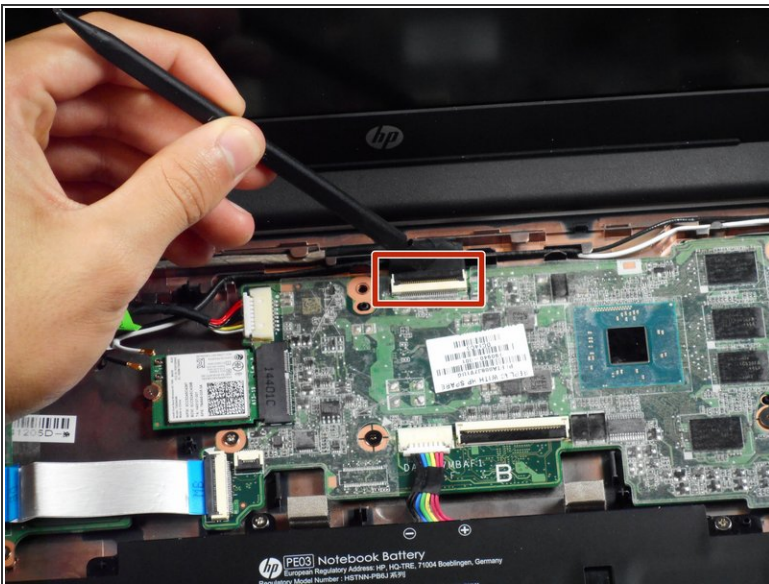
- Lift the keyboard mount out of the laptop.

## Step 6 — Display Assembly



- Gently tug on the black and white wires connected to the Wi-Fi module to disconnect them.

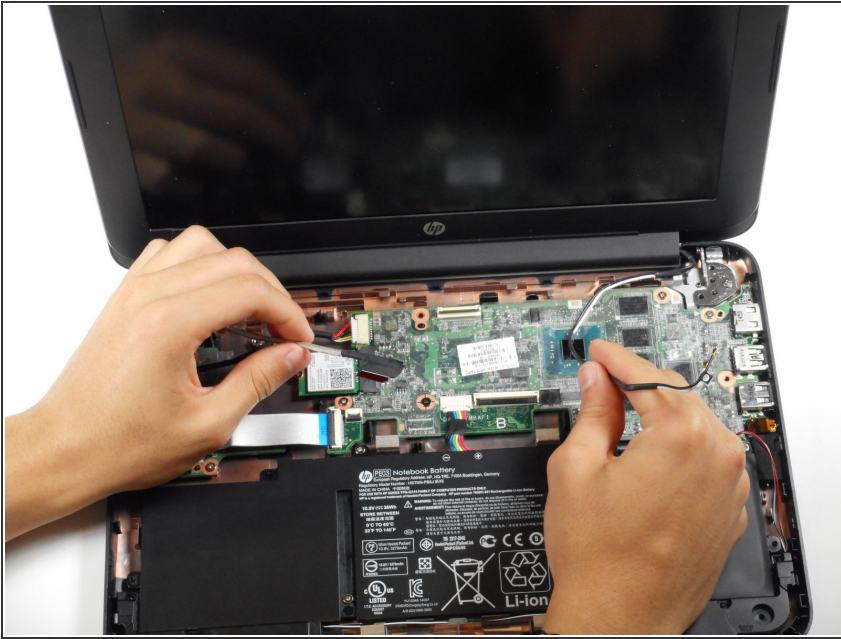
## Step 7



- Using a spudger, lift the ZIF retaining flap that secures the display's ribbon cable to the motherboard.
- Gently pull the ribbon cable out of its socket.

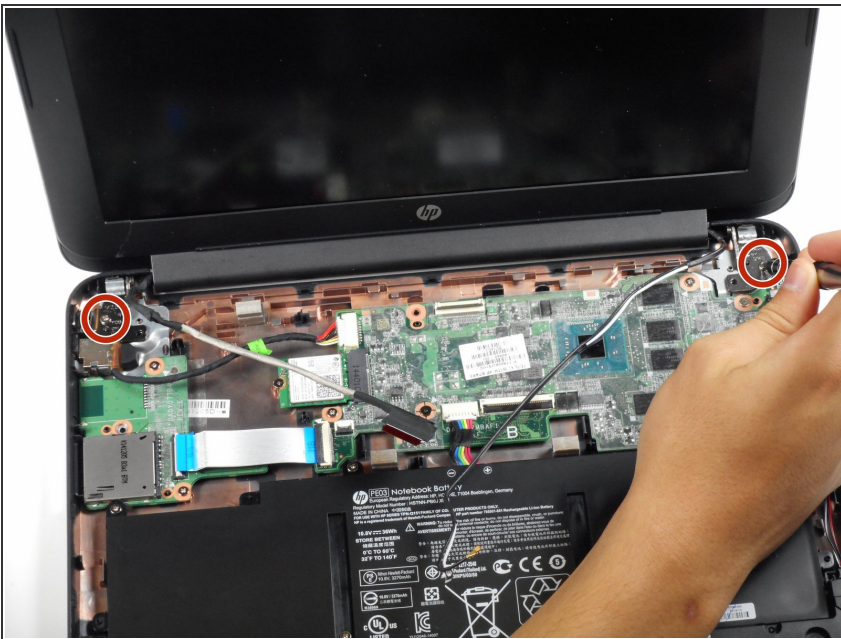


## Step 8



- Free the wire from the casing.

## Step 9



- Remove the two 6mm Phillips #00 screws located near the upper left and right corners of the hinge mounts.
- ⓘ Hold the lid so that it is folded slightly inwards while removing the screws so that the lid doesn't fall.

## Step 10





- Rotate the lid to a 90-degree angle with the table.
- Shimmy the lid out of the laptop.

## Step 11 — Screen Bezel



- Use the plastic opening tool to pry the left and right side of the top of the lid, and proceed inwards from the sides.

 Do not attempt to remove the entire frame; this isn't necessary for removing the camera.

 Do not pry at the center of the lid; this may damage the camera inside.

To reassemble your device, follow these instructions in reverse order.