



BLU Life X8 Motherboard Replacement

Replace your BLU Life X8 motherboard to fix the memory or make the programs function better.

Written By: Alexander Prasil



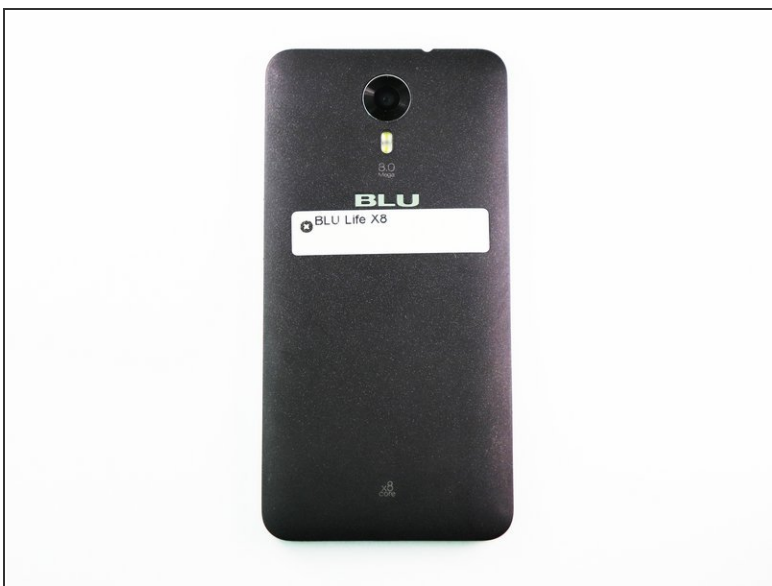
INTRODUCTION

The motherboard of the phone is the main circuit board that holds the memory and the CPU. Since replacing it is a difficult and sometimes necessary process, this guide will explain how to access, remove, and replace your BLU Life X8 motherboard.

TOOLS:

- [Phillips #00 Screwdriver](#) (1)
 - [iFixit Opening Tools](#) (1)
 - [Tweezers](#) (1)
-

Step 1 — Battery



- Flip the phone over so that the screen is facing down.
- Slide the opening tool between the micro-USB port and the back cover.
- Use the opening tool to create a gap.

Step 2



- Use your thumb to pry off the back panel once the gap is large enough.

Step 3



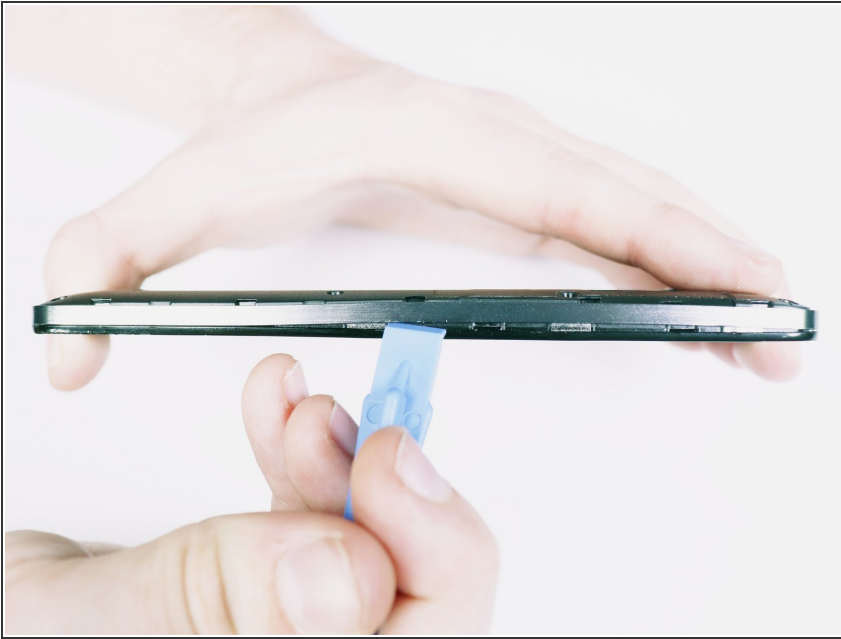
- Once the back panel is off, locate the indent at the bottom of the battery.
- Use your thumb to slip the battery out of the case.

Step 4 — Motherboard



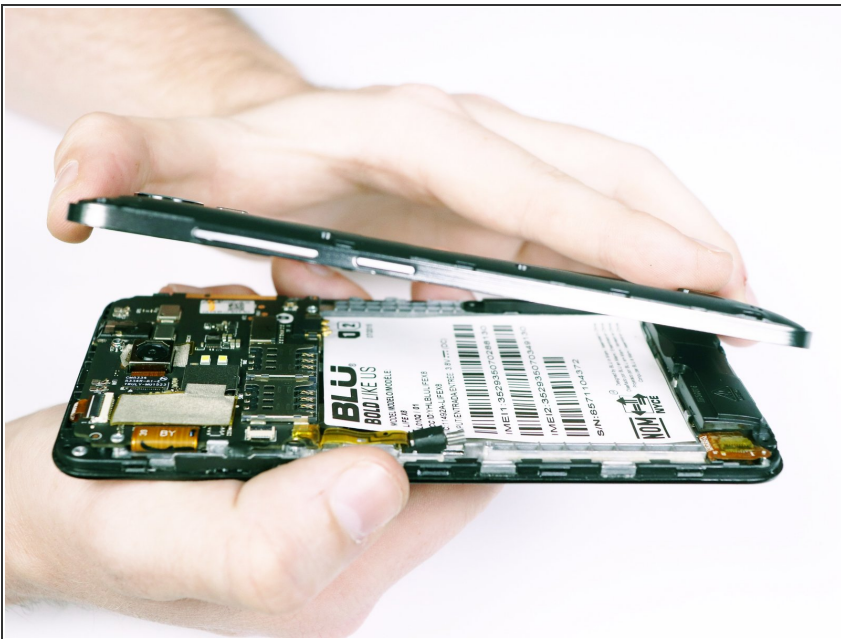
- Use the Phillips #00 bit to undo the nine 1.5mm screws from the back of the device.

Step 5



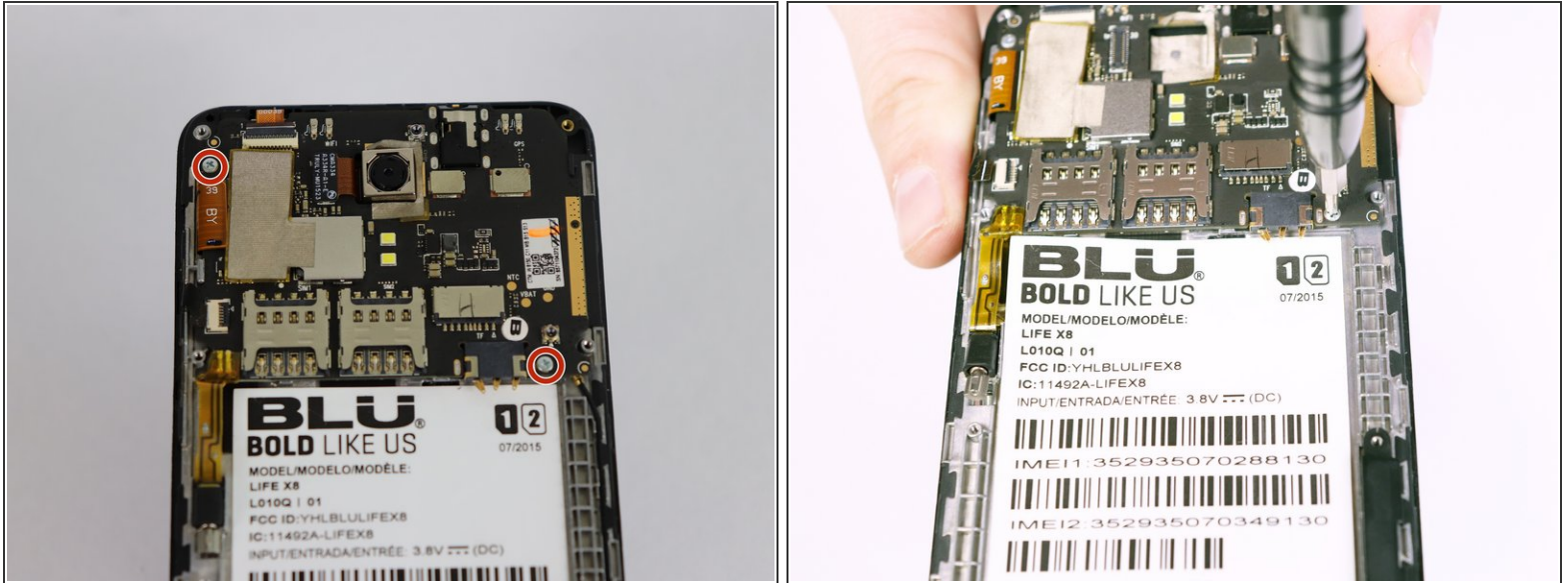
- Wedge the opening tool into the seam of between the screen and the gray frame.
- Run the opening tool along the seam to release the clips that hold the two pieces together.
- ❗ You may need to use the opening picks to prevent the clips from re-engaging.

Step 6



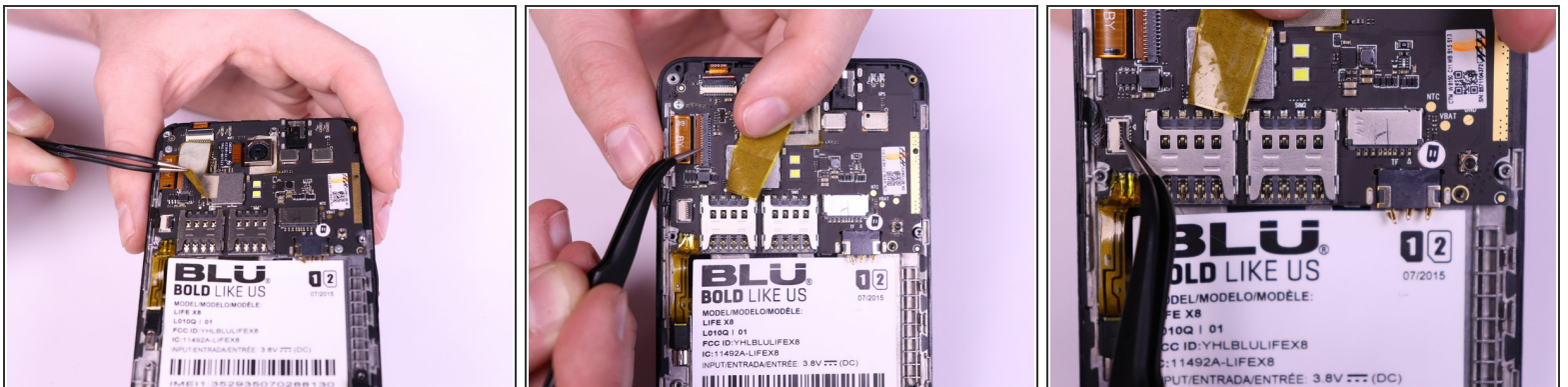
- Once all the clips have been released, lift the frame and set it aside.

Step 7



- Use the Phillips #00 Phillips bit to undo the two 1.5mm screws from the motherboard.

Step 8



- Use the tweezers to peel away the mesh tape and reveal the ribbon connectors.
- Use the tweezers to lift the brown and black tabs to release the ribbon cables and unlock them.

Step 9



- The ribbon cables should be free. Pull back on the ribbons to release them from their connectors.

Step 10



- Slowly lift the vibration motor away from the frame and peel up the tape.

To reassemble your device, follow these instructions in reverse order.