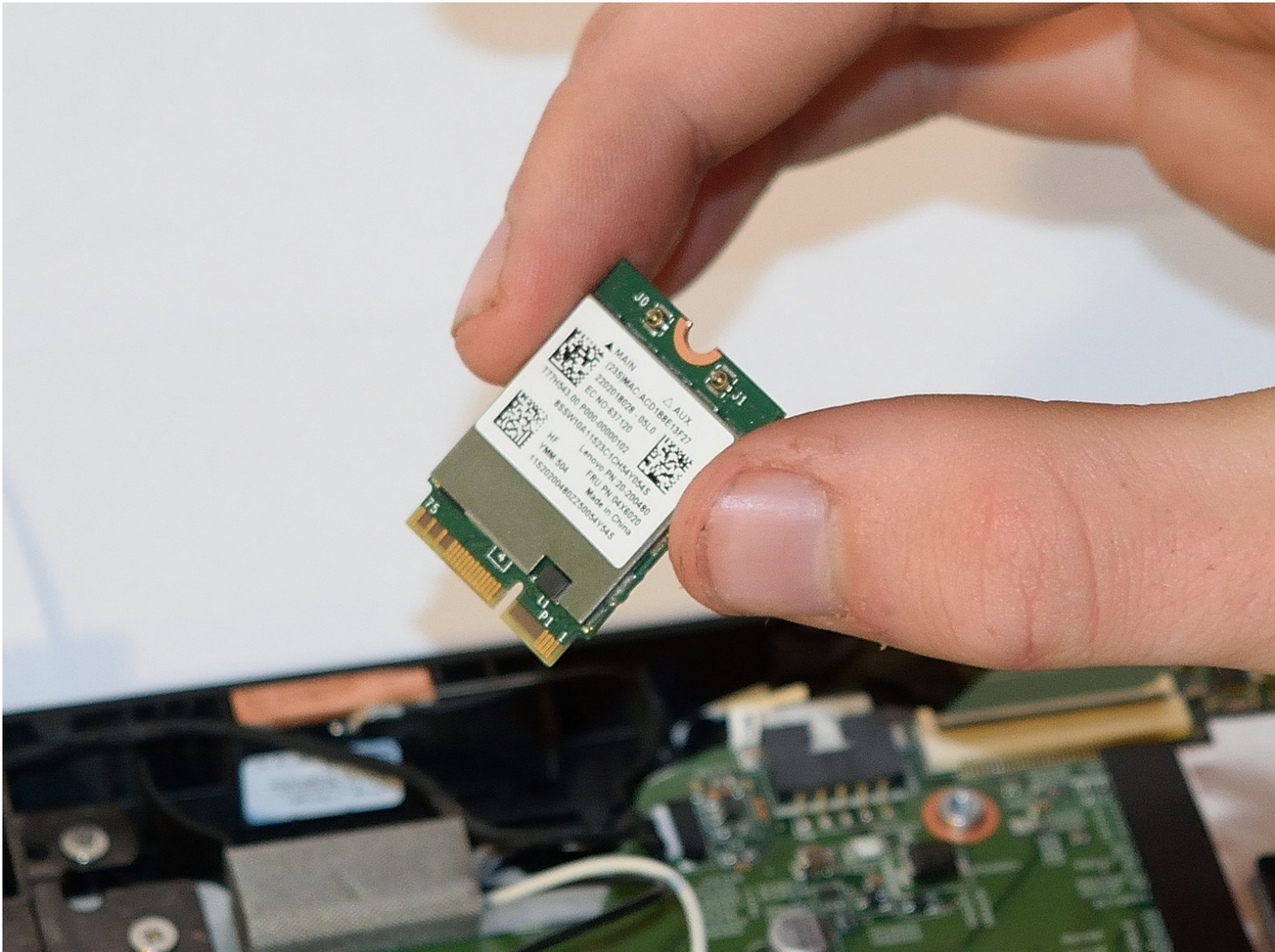




# Lenovo Edge 15 Wireless LAN Card Replacement

This guide will show you how to replace the wireless LAN unit in your lenovo edge 15

Written By: ryan sanders



## INTRODUCTION

This guide will give you step by step instructions on how to replace the Wireless LAN card in your Lenovo Edge 15.



### TOOLS:

- [Phillips #0 Screwdriver](#) (1)
- [Phillips #1 Screwdriver](#) (1)



### PARTS:

- [PCIe wireless LAN module](#) (1)

## Step 1 — Wireless LAN Card



- With the laptop upside-down, remove all 11 M2 x 6.0mm screws from the cover plate using the Phillips #0 screwdriver.

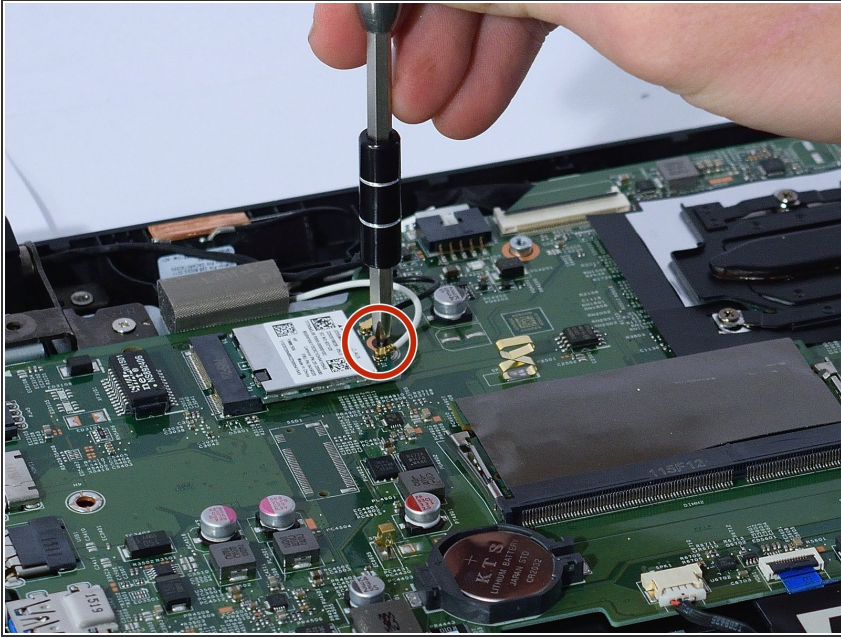
## Step 2



- Gently lift the cover plate off the body of the laptop, ensuring that it does not pull on any components such as the USB ports.

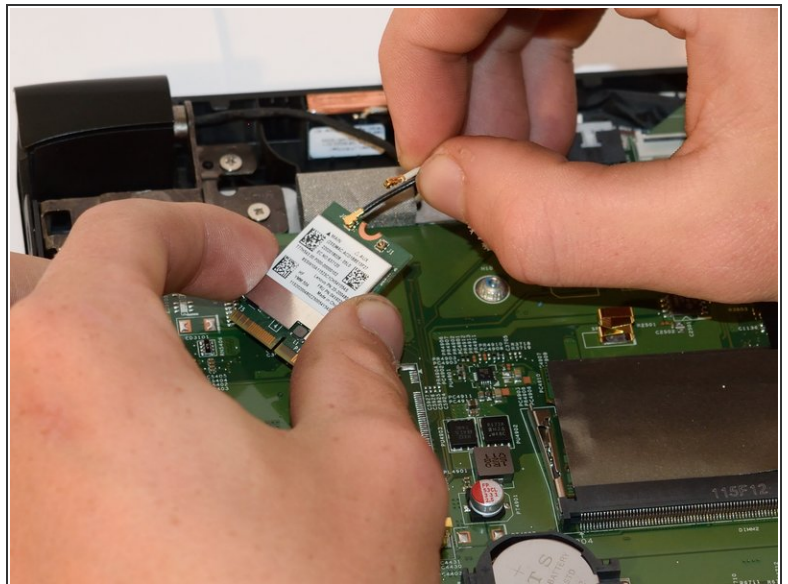
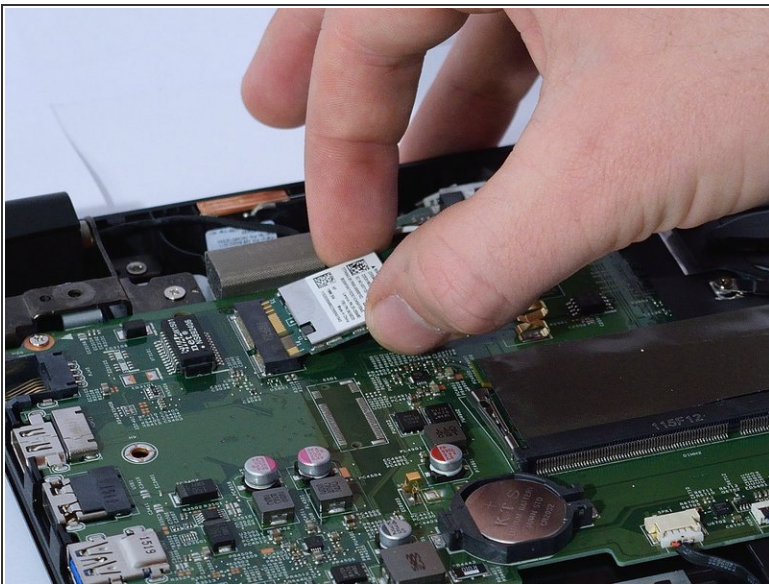


### Step 3




- Remove single 3mm screw holding down the end of the card using a Phillips #1 screwdriver.

### Step 4



- Use hands to disconnect card from slot and remove both cables.

 When replacing connectors be sure to reconnect to proper terminal. Do this by orienting as is in the picture and attaching black cable to left side and white cable to right side.

To reassemble your device, follow these instructions in reverse order. Make sure that connectors are in proper position as shown in step 3.