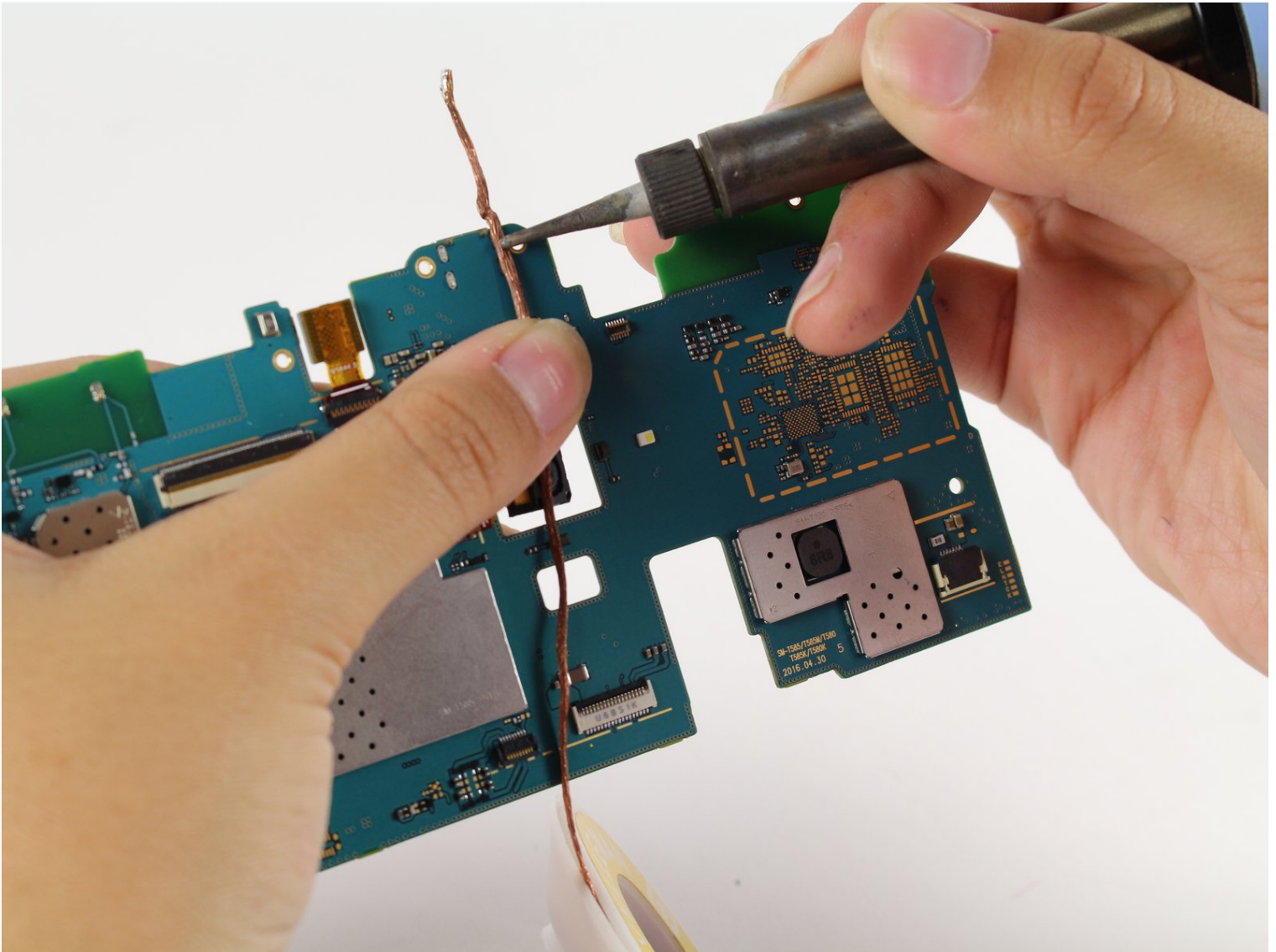




# Samsung Galaxy Tab A 10.1 Charging Port Replacement

If your tablet is not charging and you have...

Written By: Isabella Li



# INTRODUCTION

If your tablet is not charging and you have made sure your charger works, you may need to replace your charging port.

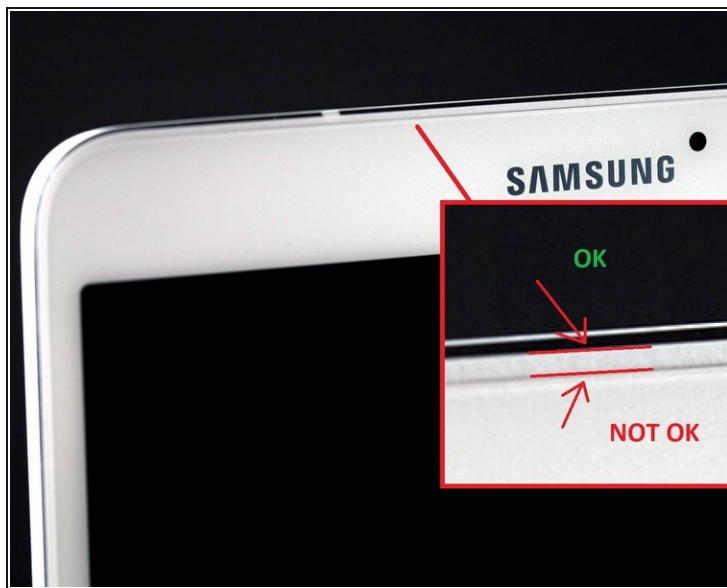
## TOOLS:

iFixit Opening Tool (1)  
Soldering Iron 60w Hakko 503F (1)  
Lead-Free Solder (1)  
Desoldering Braid (1)


## PARTS:

Galaxy Tab A 10.1 Charging Port (1)

### Step 1 — Back Panel



- Have the front of the device facing you.
- Begin near one of the curved edges of the device (see photo two for visual example).
- Place a plastic opening tool between the front and back panels.

 If a plastic opening tool doesn't work, using a metal spudger may work, but it may damage the plastic on the device.

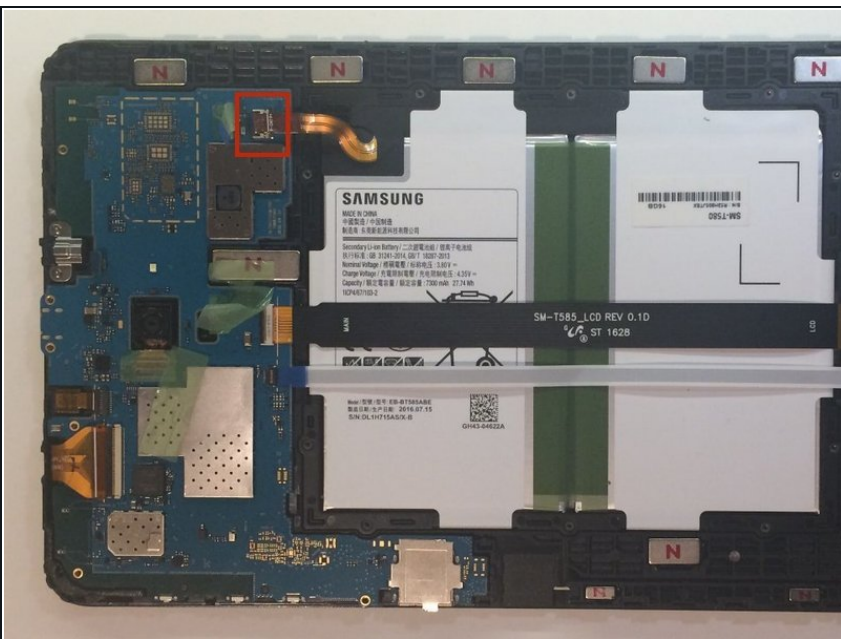
 Remember to remove the micro SD card (if present) before you begin.

## Step 2



- Once the plastic opening tool is fully inserted, wedge it around the device's edges to separate the panels.
- Lift the back panel off of the device.
- ⓘ The back panel will make a clicking noise while being lifted off of the device.

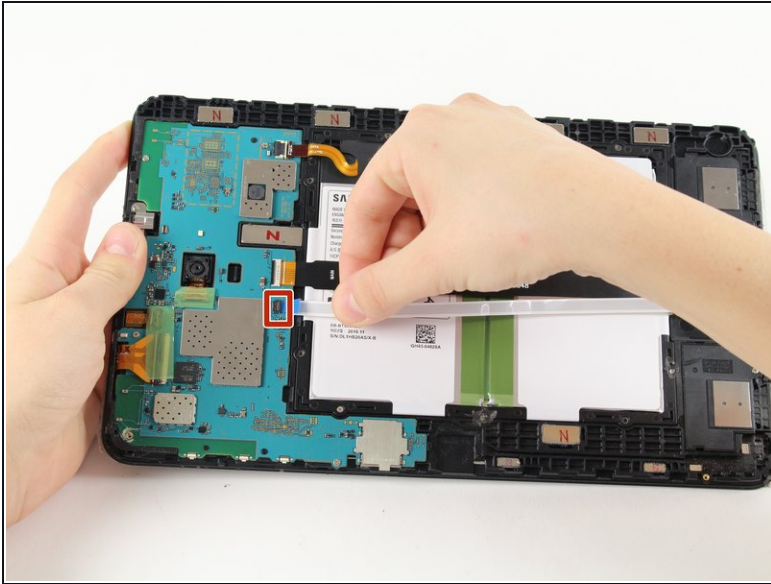
## Step 3 — Disconnecting the battery



- Remove the adhesive film and flip up the retaining flap on the ZIF battery connector.
- Slide the orange battery ribbon cable out of the ZIF connector.

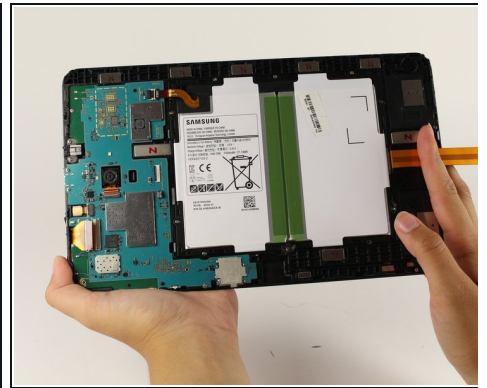
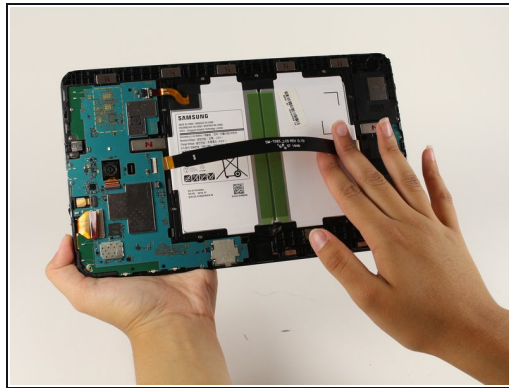
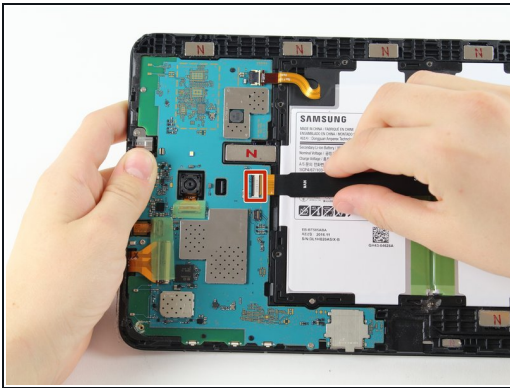


## Step 4



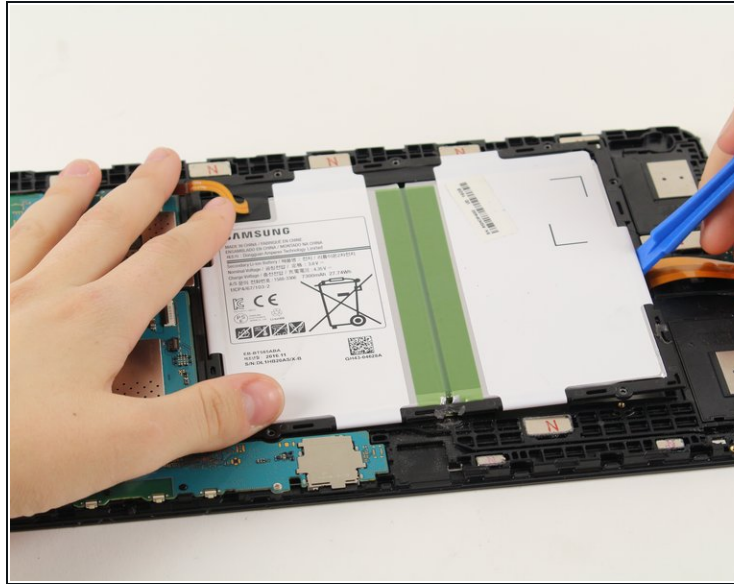
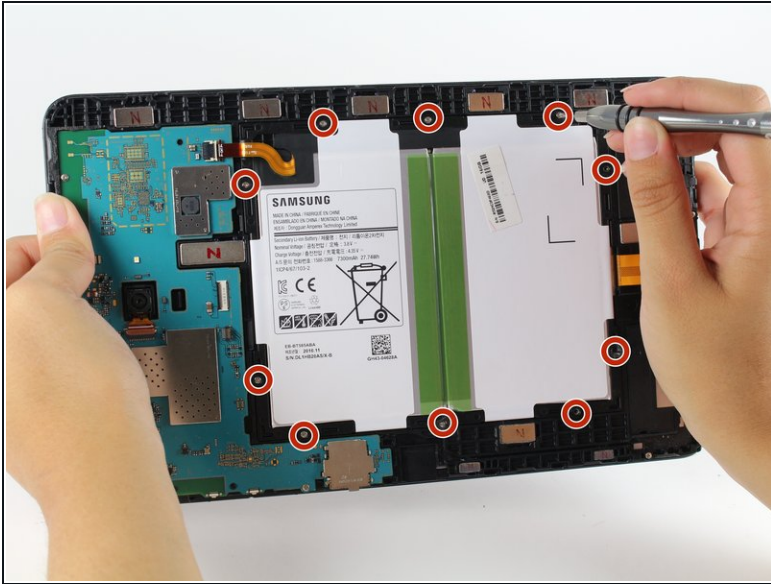
- Remove the adhesive film, lift the retaining tab and withdraw the white speaker ribbon.

## Step 5



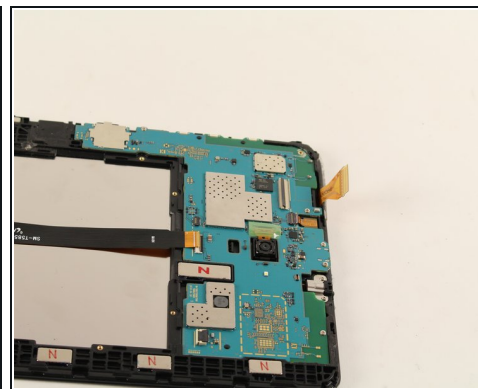
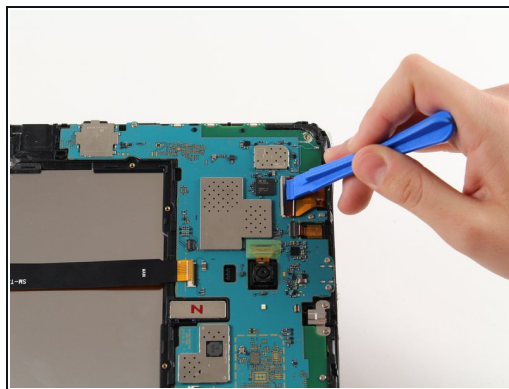
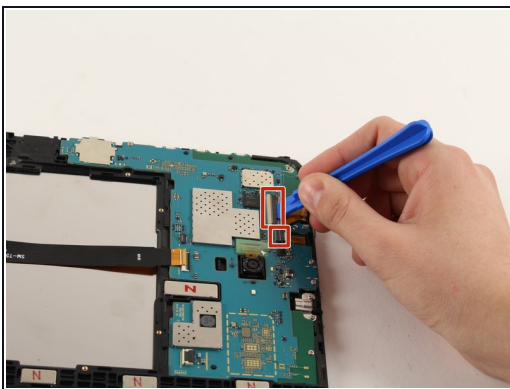
- Lift the retaining tab and withdraw the black LCD ribbon.

## Step 6 — Battery removal



- Using a Phillips #000 screwdriver, remove the ten 4 mm screws around the battery.
  - Slide a plastic opening tool under the bottom of the battery close to the speakers and lift up.
- ⚠ The large rectangular white and black piece is the entire battery. Be careful not to puncture it.

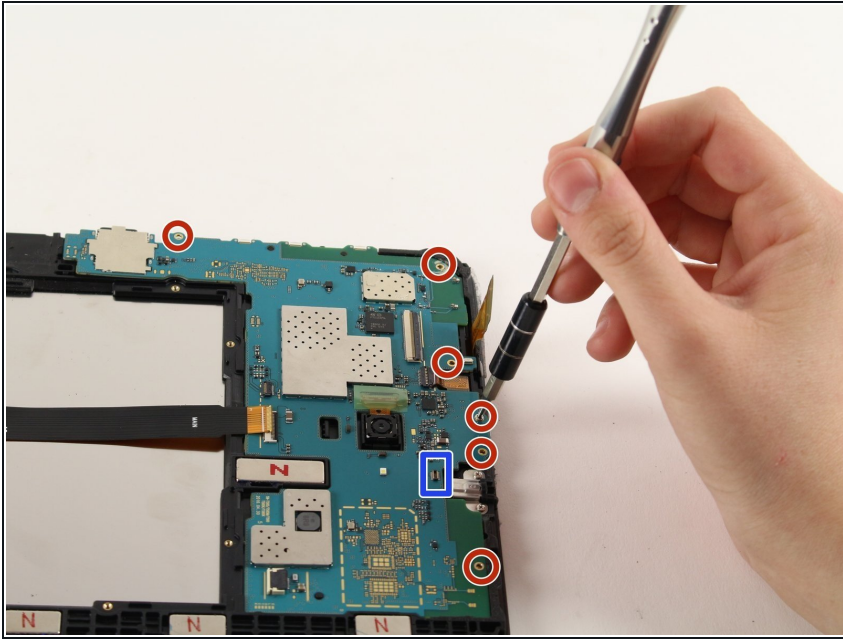
## Step 7 — Motherboard



- Flip up the two ZIF connectors on the motherboard using the plastic opening tool.
- Slide the orange ribbon cables out of the ZIF connectors.
- Remove the front-facing camera.

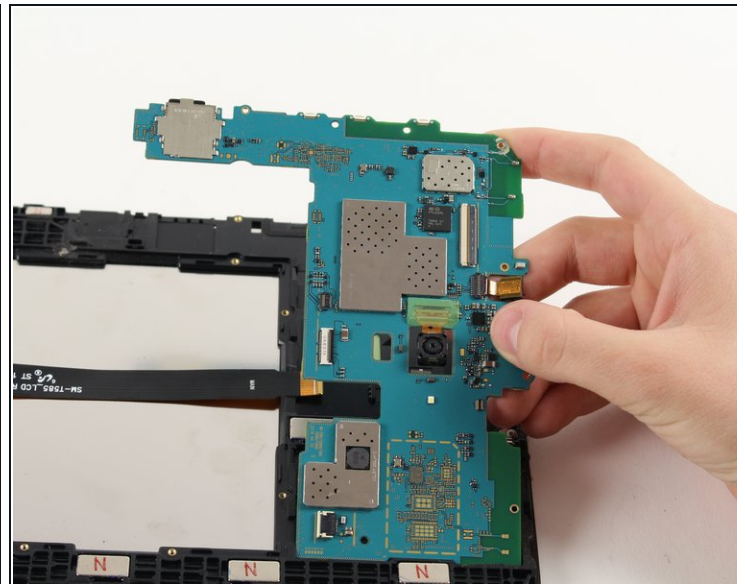


## Step 8



- Disconnect the headphone jack from the motherboard.
- Use a Phillips # 000 to remove six 4mm screws.

## Step 9

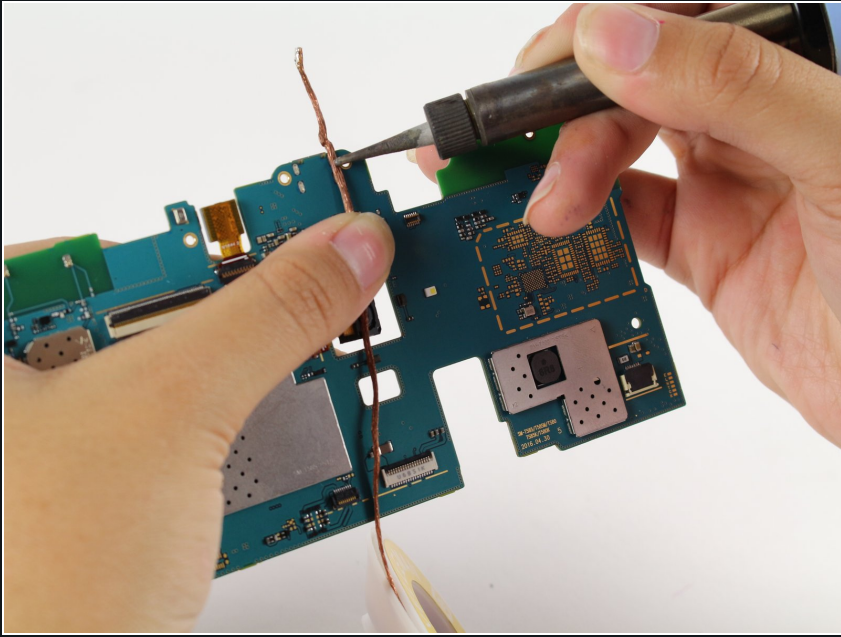


- Lodge the plastic opening tool under and lift the motherboard out of the tablet.

⚠ Be careful not to snag any connectors.

- Remove the metal bracket that was underneath the charging port and set aside.

## Step 10 — Charging Port

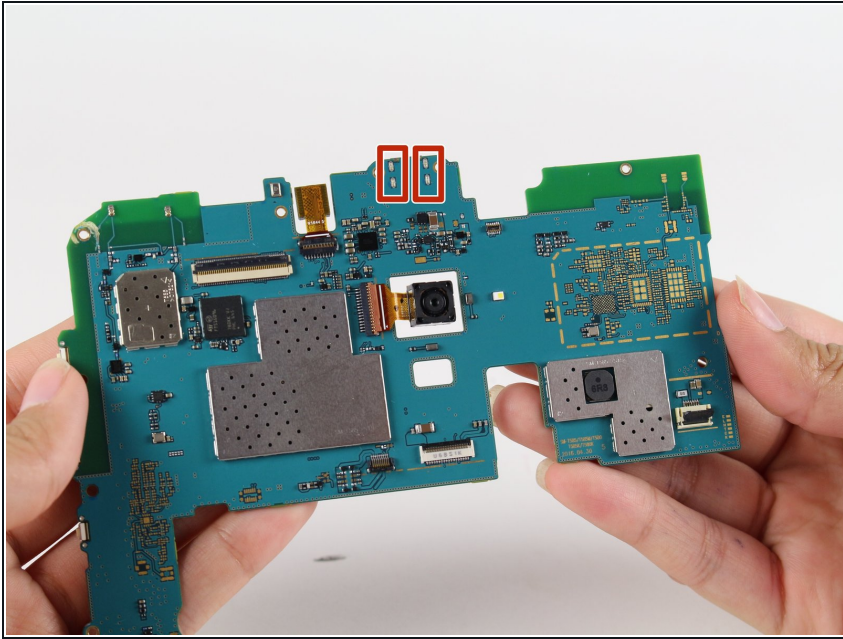


- Place desoldering braid on one of four holes at top back of motherboard.
- Place soldering iron on top of the desoldering braid on the gray part of hole to lift solder. If confused [here's](#) a reference.

- ❗ If desoldering braid gets covered with solder and won't lift anymore, just use a new part of the solder wick.
- ❗ If you're struggling to desolder the charging port, use a heat gun to warm up the entire board. **There are a set of tiny square contacts under the charging port that can move around while heating the area. They must be put back if they move.**

⚠ Soldering iron will be very hot and can both burn your hand and possibly damage the device. Lay the motherboard down and do not hold the board while you solder (despite the image.)

## Step 11



- Follow same steps on other three holes.
- Lift small gray metal piece from the motherboard.

To reassemble your device, place a new metal piece where old one was and solder it to the motherboard in the four holes on the opposite side of the motherboard.