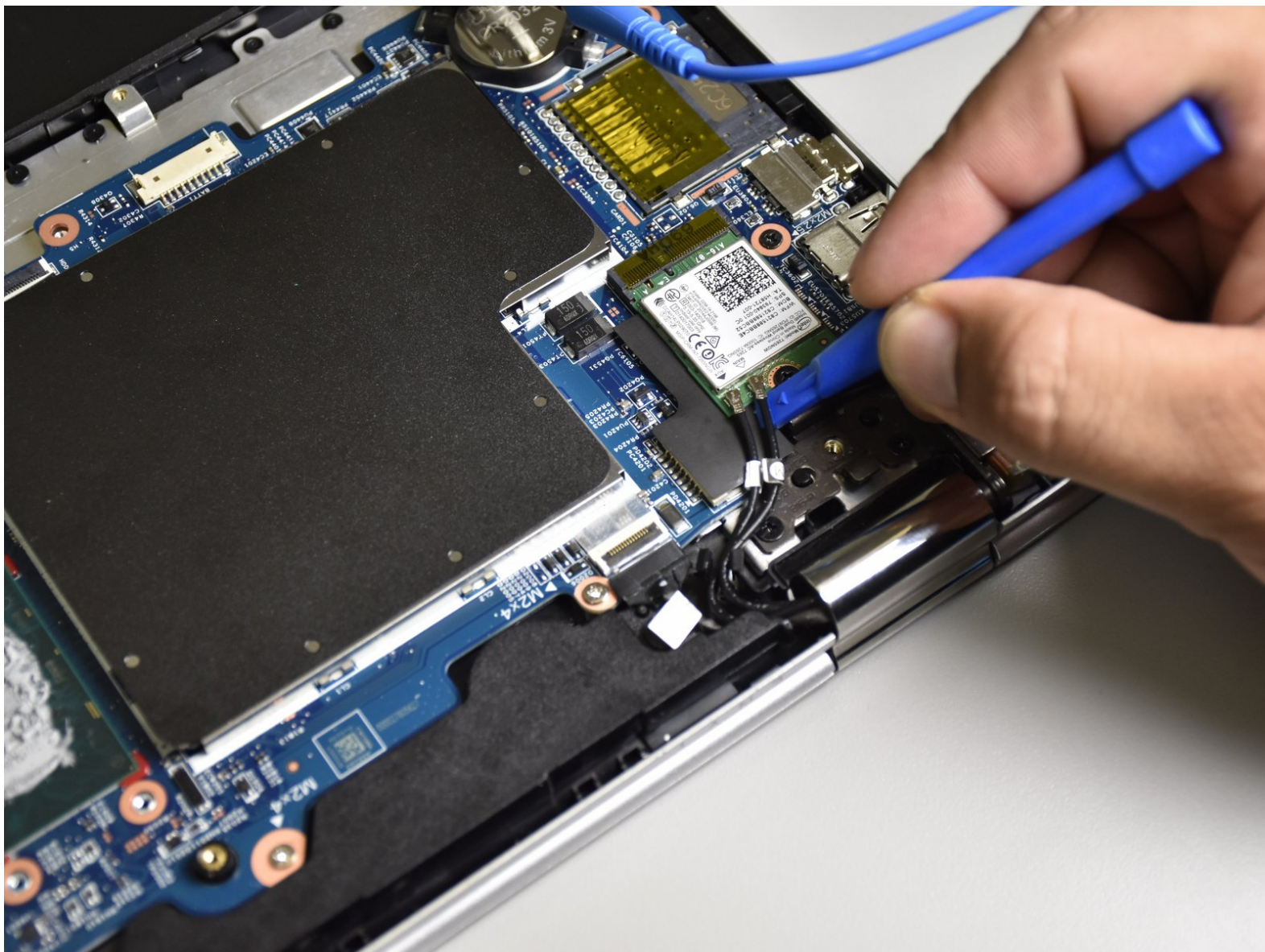




HP Envy x360 m6-aq103dx Wireless Module Replacement

How to replace the HP Envy x360 m6-aq103dx Wireless Module.

Written By: Joey Chen



INTRODUCTION


This guide is for the replacement of the Wireless Module. You will need a small plastic opening tool and a standard Phillips Head 1 Screwdriver.

TOOLS:

- [Spudger](#) (1)
 - [Phillips #1 Screwdriver](#) (1)
 - [iFixit Opening Tools](#) (1)
 - [T5 Torx Screwdriver](#) (1)
-

Step 1 — Bottom Cover



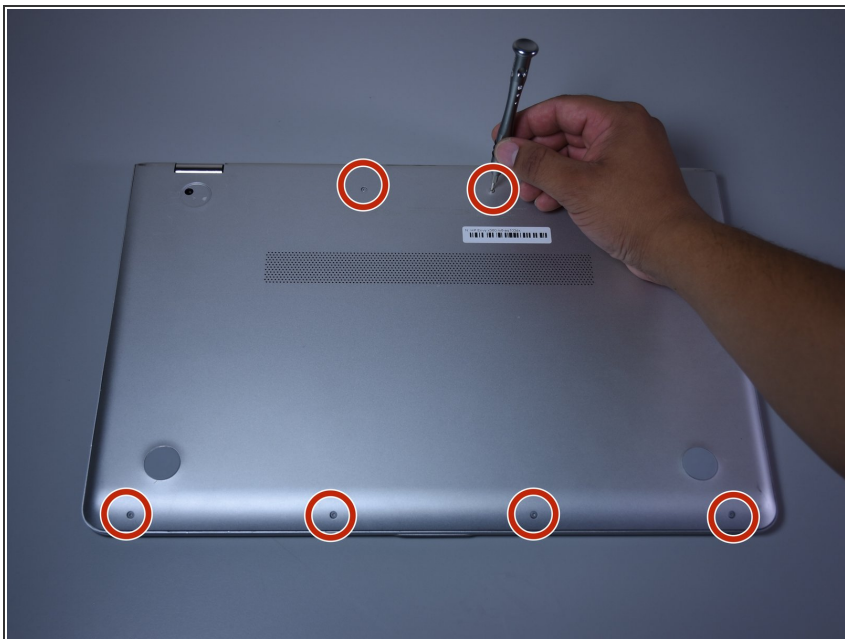
- Flip the laptop over to expose the underside.
 - Remove the two grip pads with blue plastic opening tool by inserting the tool between the laptop and the pads and slowly lifting up.
-  The grip pads are tacky, remove slowly to avoid separating the adhesive.

Step 2



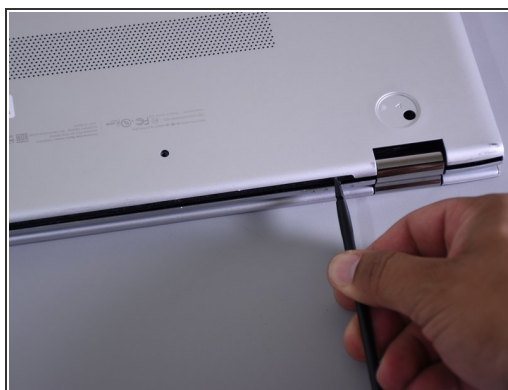
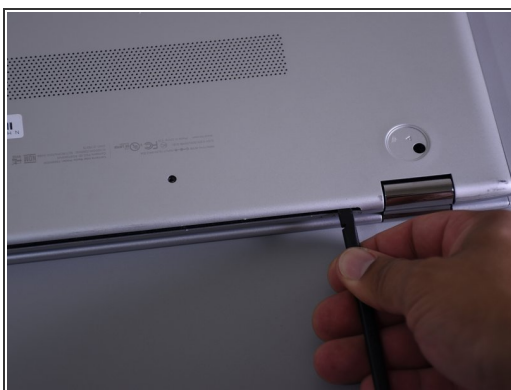
- Remove the two 8 mm Phillips Head screws that were under the grip pads using a Phillip's Head 1 Screwdriver.

Step 3



- Remove the six 5 mm Torx screws using a T5 Torx Screwdriver.

Step 4



- Use the nylon spudger to pop off the bottom cover by inserting it into the heat vent and twisting to the left or right.

 You may hear a slight clicking or popping, but that is normal.

Step 5 — Battery



- Use the Phillips Head 1 Screwdriver to remove the six 4 mm screws.

Step 6



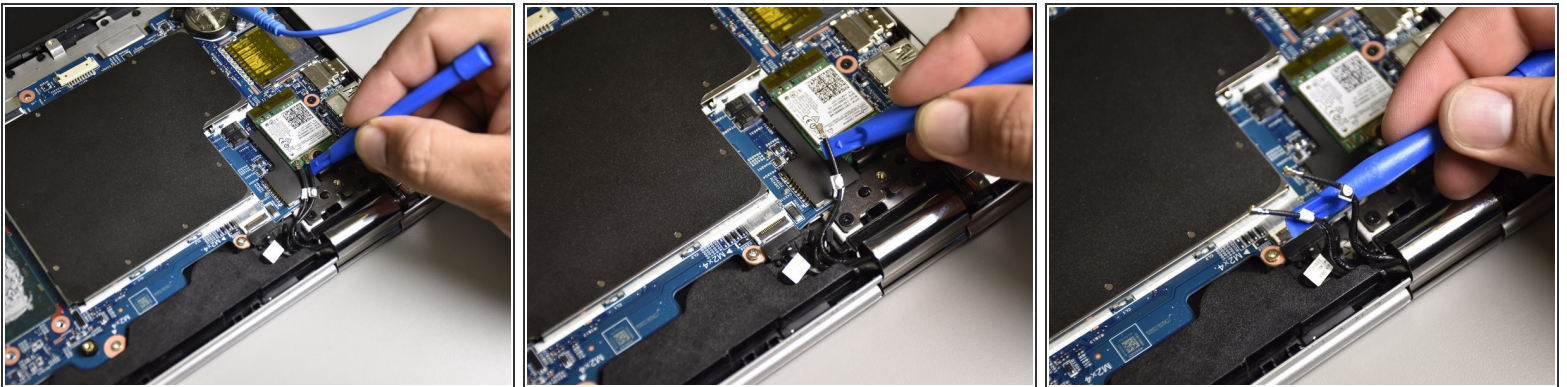
- Disconnect the battery port from the motherboard by gently lifting it on both sides with the plastic opening tool.
- Lift up the port with the tool.

Step 7



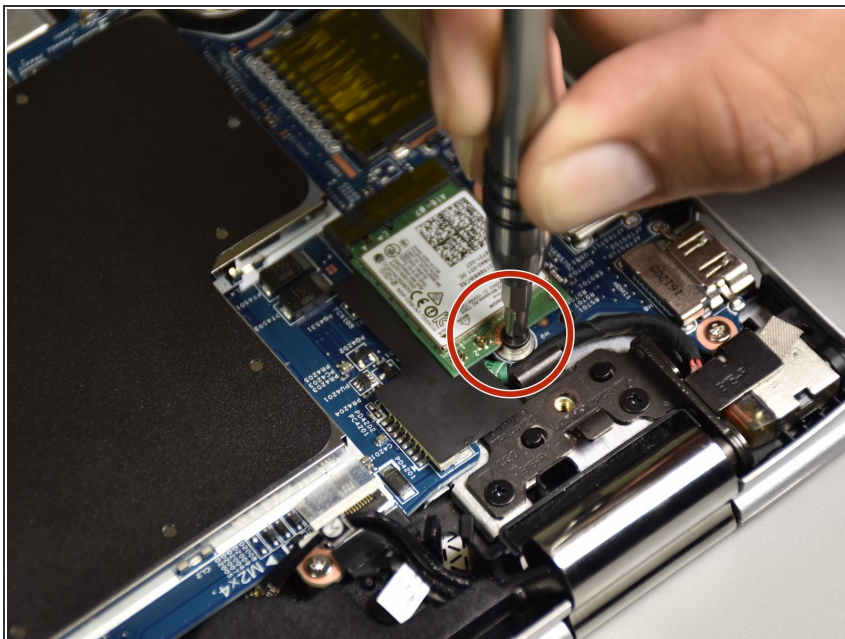
- Lift the battery out of the laptop with your hands.

Step 8 — Intel Wireless Module



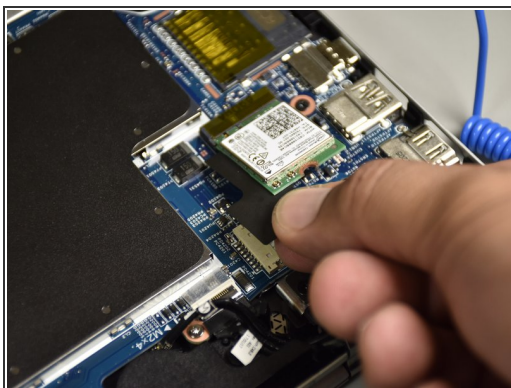
- Remove the two antenna cables connected to the wireless module by wedging the small plastic opening tool between the cables and the wireless module and lifting up.

Step 9



- Remove the 3.5 mm Phillips Head screw with the Phillip Head 1 screwdriver.

Step 10



- Slide the wireless module towards the back of the computer to remove it.

To reassemble your device, follow these instructions in reverse order.