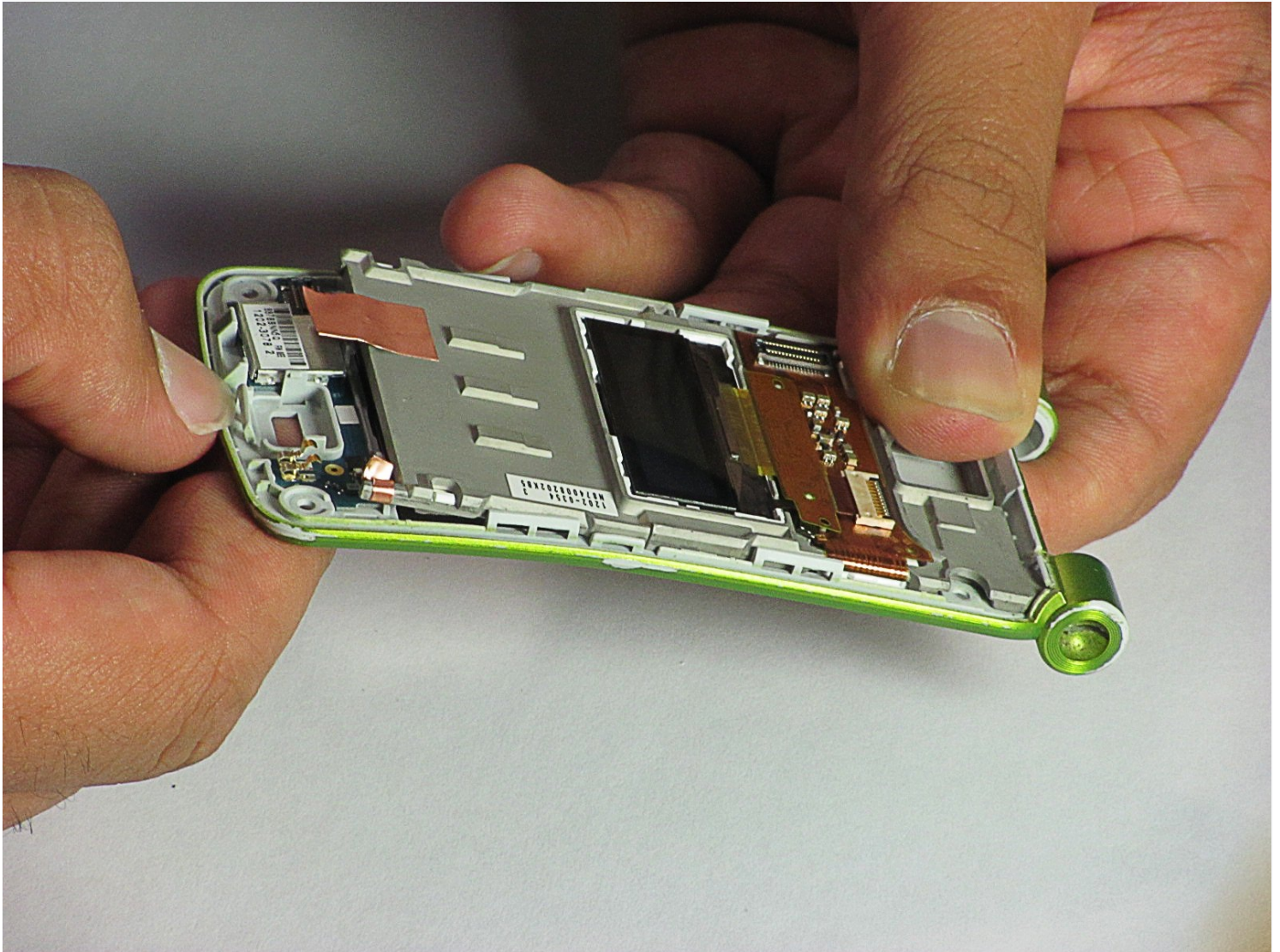




Sony Ericsson TM506 Screen Replacement

This guide provides instruction for installing...

Written By: Daniel



INTRODUCTION

This guide provides instruction for installing a screen for the Sony Ericsson TM506 cell phone.

TOOLS:

[Paper Clip](#) (1)

[iFixit Opening Tool](#) (1)

[Push Pin](#) (1)

[T5 Torx Screwdriver](#) (1)

[T6 Torx Screwdriver](#) (1)

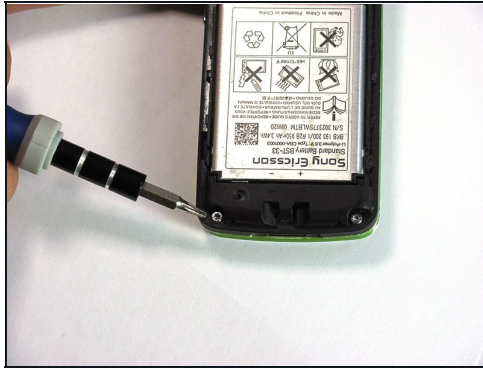
[Tweezers](#) (1)

Step 1 — Battery Cover



- Firmly hold the phone between your fingers with your thumb on the battery cover.
- Push down with your thumb until the battery cover comes off.

Step 2 — Back Case



- Unscrew the bottom two 5.4mm screws with a Torx T6 screwdriver.

Step 3



- Remove the two rubber casings for the top two screws with a plastic opening tool.

Step 4



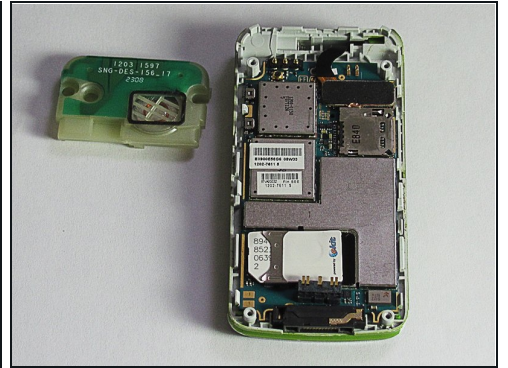
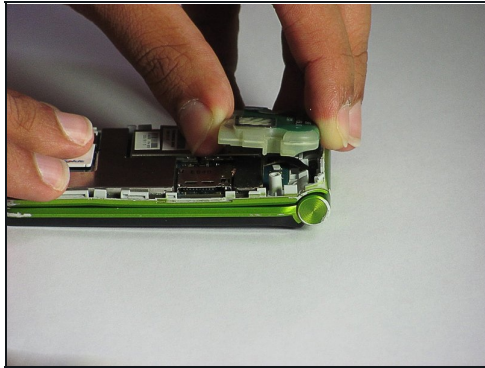
- Unscrew these two 5.4mm screws with a Torx T6 screwdriver.

Step 5



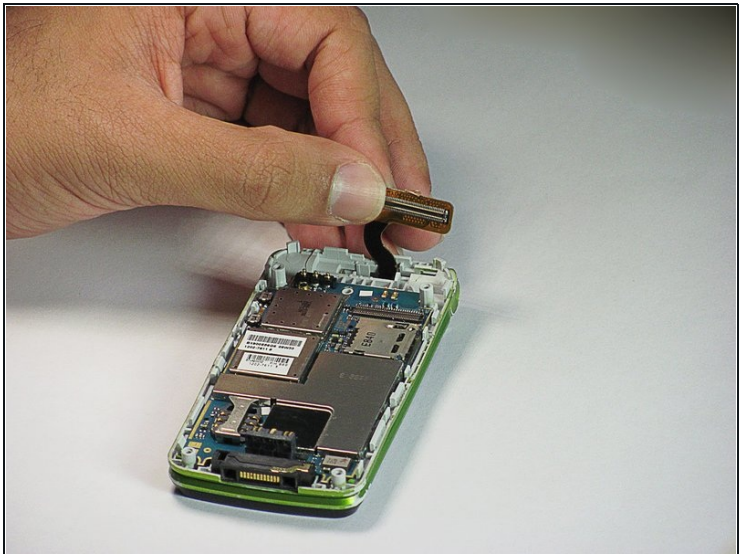
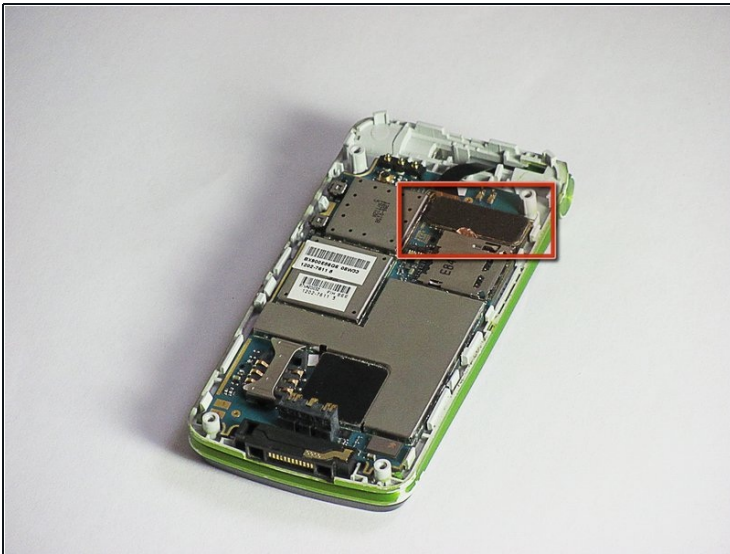
- There are eight snap hooks located around the outer case. Carefully snap these to remove the outer case.

Step 6 — Sound Box



- The sound box is attached to the case by two snap hooks.
- Lift the sound box up to remove it from the case.

Step 7 — Motherboard



- Locate the 80-pin connector.
- Carefully, lift up on the connector to separate it from the board.

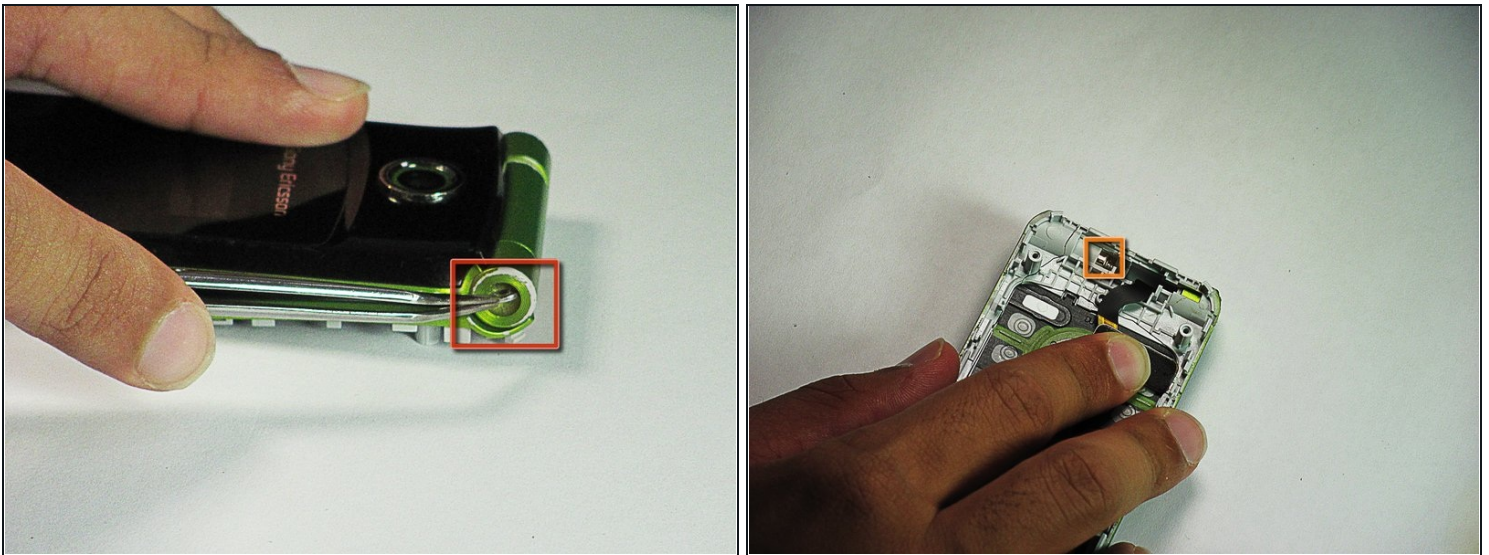
Step 8



- There are two snap hooks that attach the motherboard to the case.
- Using a plastic opening tool, carefully lift up on the motherboard to detach it.

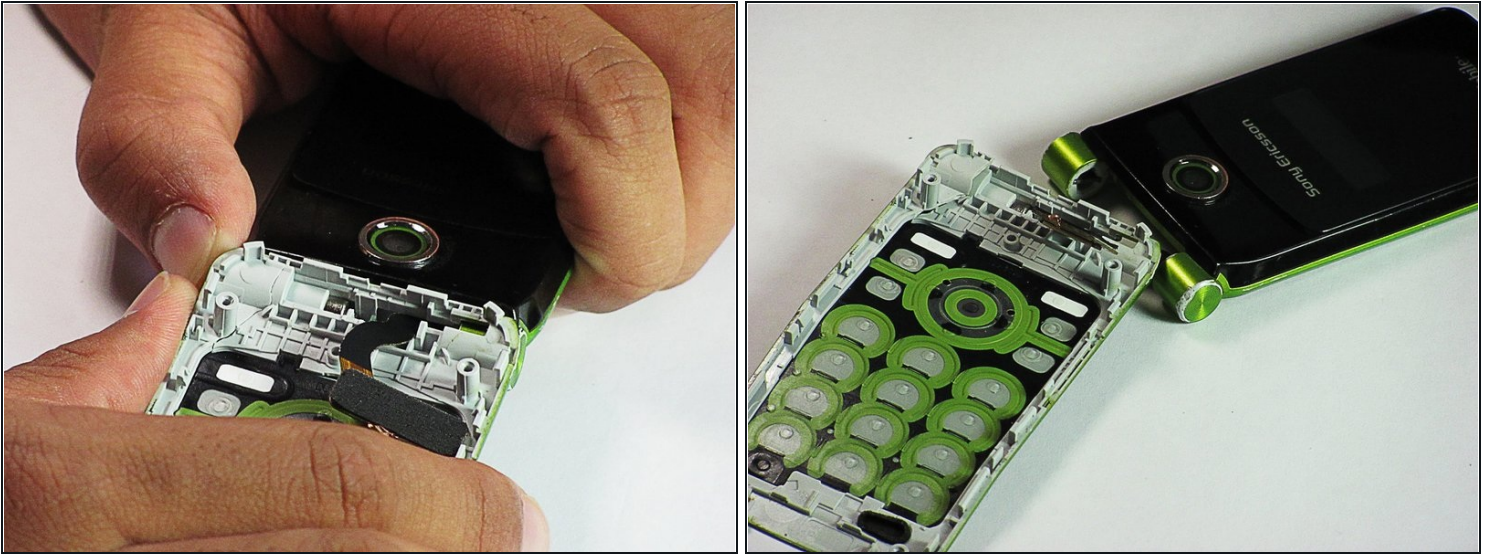
⚠ The motherboard is extremely fragile. Try to be forceful yet delicate in the removal because it will not come off easily.

Step 9 — Speaker, GPS, and Camera



- Use [tweezers](#) to push the hinge stopper in until it can no longer be moved.
- The hinge stopper should be about 5.5mm in.

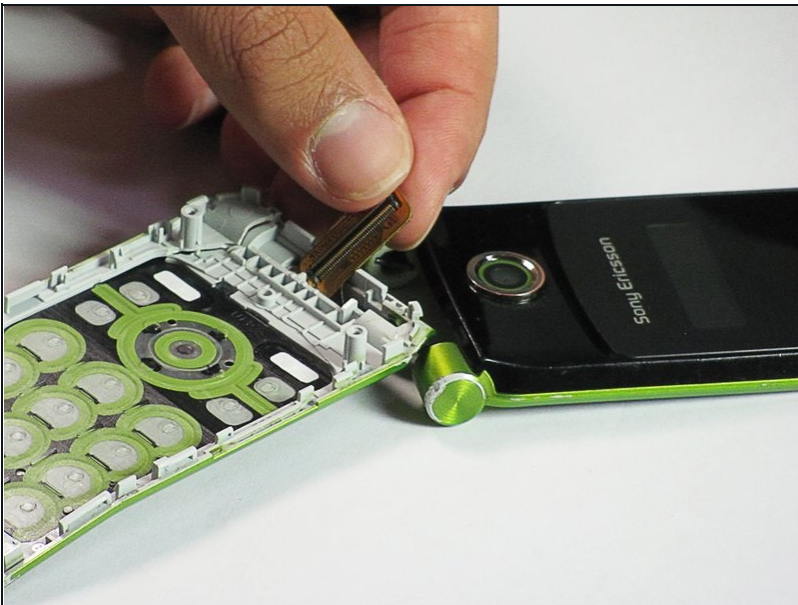
Step 10



- Separate the bottom and top half of the phone from the hinge they are connected by.

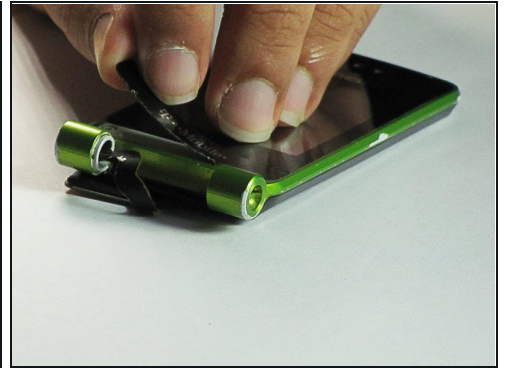
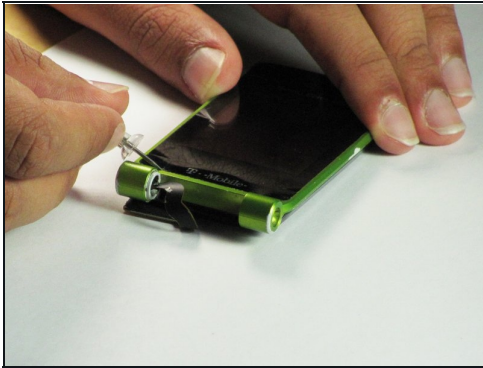
⚠ Don't completely pull apart the two pieces or you will damage the ribbon.

Step 11



- Pull the ribbon through the opening in the hinge to completely separate the upper and lower halves of the phone.

Step 12



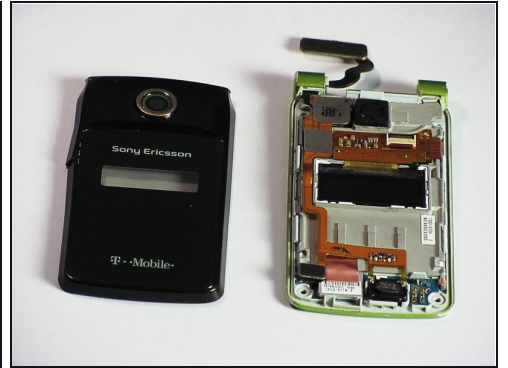
- The top and bottom covers are held in place by adhesive. To remove them, use a pushpin in the four indentations indicated to remove.

Step 13



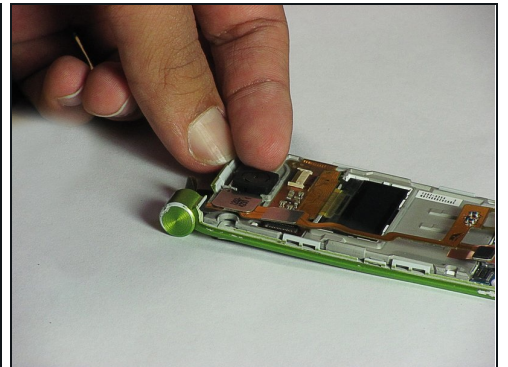
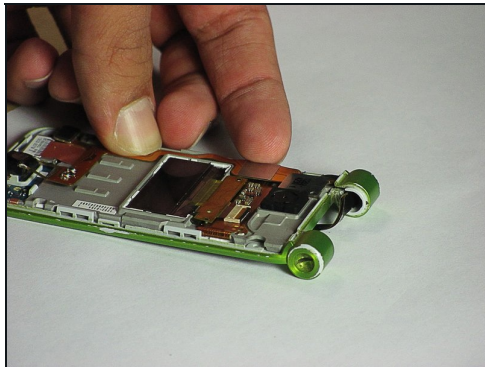
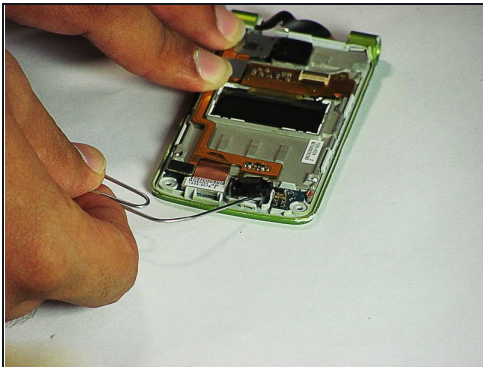
- Remove the four 5.4 mm screws with a Torx T5 screwdriver.

Step 14



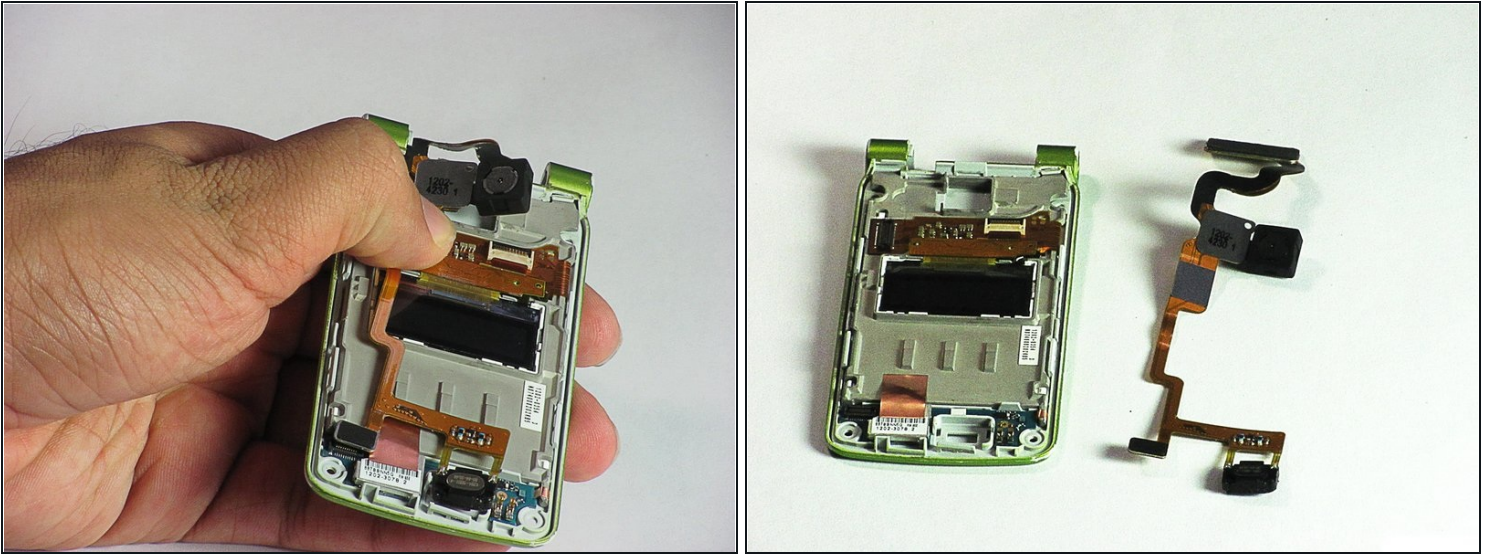
- Use a plastic opening tool in the indicated location and apply pressure until the case hook is detached. Then lift the case up until the two pieces are detached.

Step 15



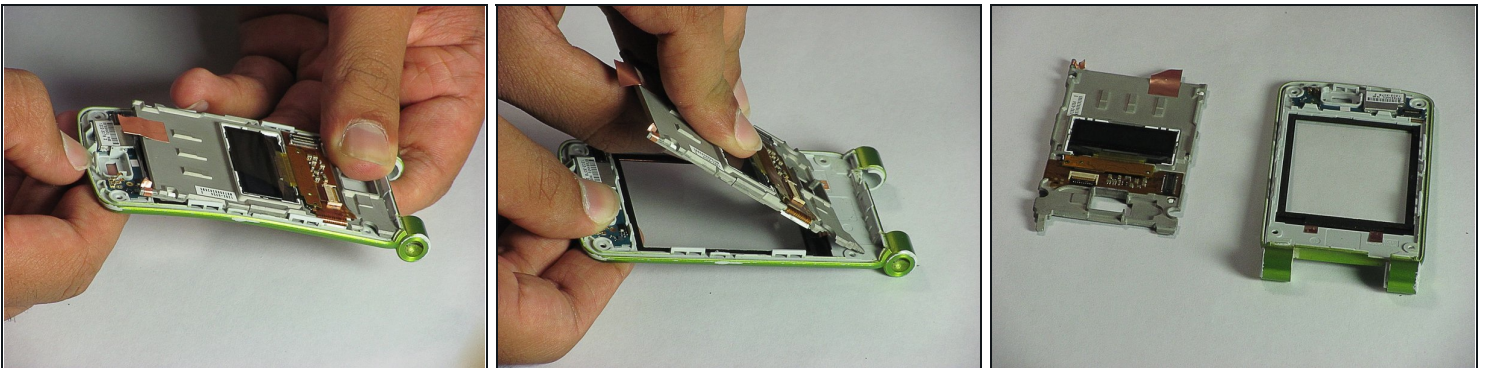
- Use a paperclip to detach the speaker from the case.
- Detach the GPS from the case by carefully lifting it up from the case.
- Detach the camera with your hands or by using a paperclip similar to the way the speaker was removed.

Step 16



- Once the three components are detached, removing the ribbon is possible.
- Simply, move the ribbon to the right and it will be completely detached from the case.

Step 17 — Screen



- Pull apart the screen and the case at one end. Then slide the screen out to completely detach them.

To reassemble your device, follow these instructions in reverse order.