



# Acer Aspire ES1-111M-C7DE Hard Drive Replacement

Guide on how to take out a hard drive in an Acer Aspire ES1-111M-C7DE in order to replace or upgrade it.

Written By: Mason Devinney



---

## INTRODUCTION

The hard drive is a relatively easy component to replace. That being said, you do have to be careful when removing it to not damage the connector.



### TOOLS:

- [JIS #0 Screwdriver](#) (1)
  - [iFixit Opening Tools](#) (1)
-

## Step 1 — Back Cover



- Unscrew the 13 6.2mm screws located on the bottom of the laptop using the JIS #0 screwdriver.

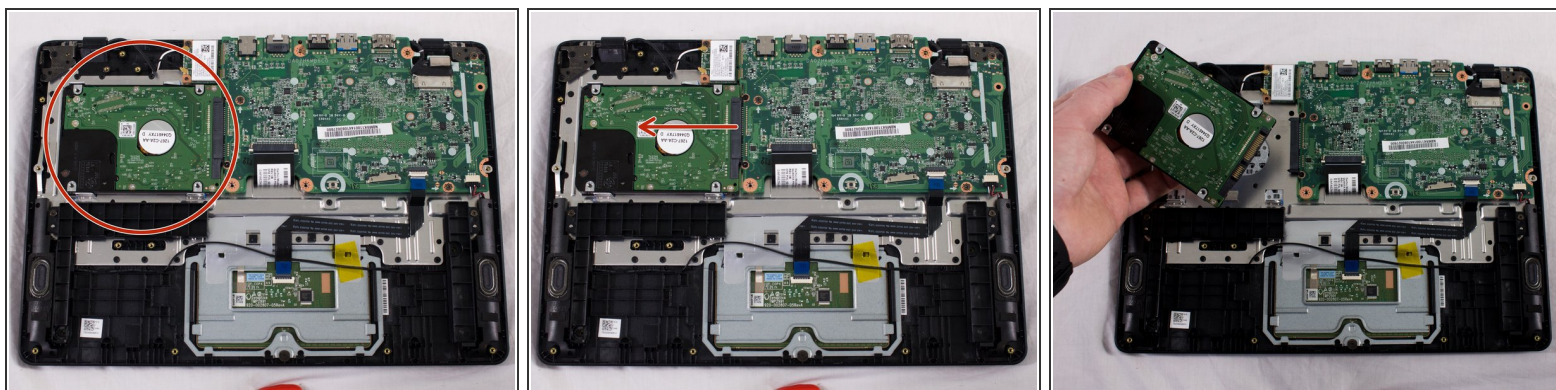
## Step 2



- Using a plastic opening tool, gently pry the lower case off. Place aside.



## Step 3 — Hard Drive



- Locate the hard drive and slide the hard drive to the left until it disconnects from the mother board.

To reassemble your device, follow these instructions in reverse order.