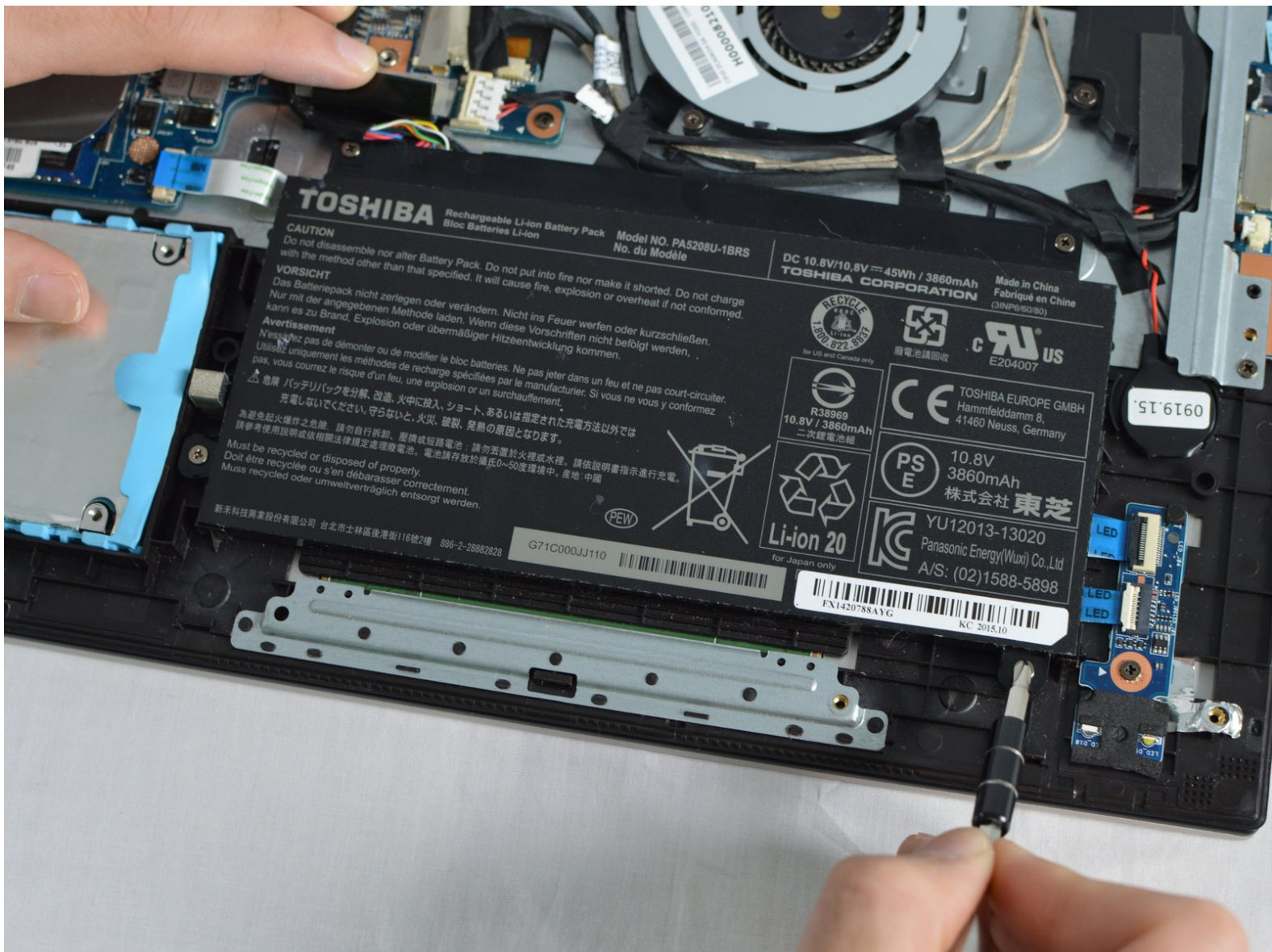




Toshiba Satellite P50W-C Battery Replacement

This guide will show you how to replace the battery of the Toshiba Satellite P50W-C.

Written By: Lawrence Lozada



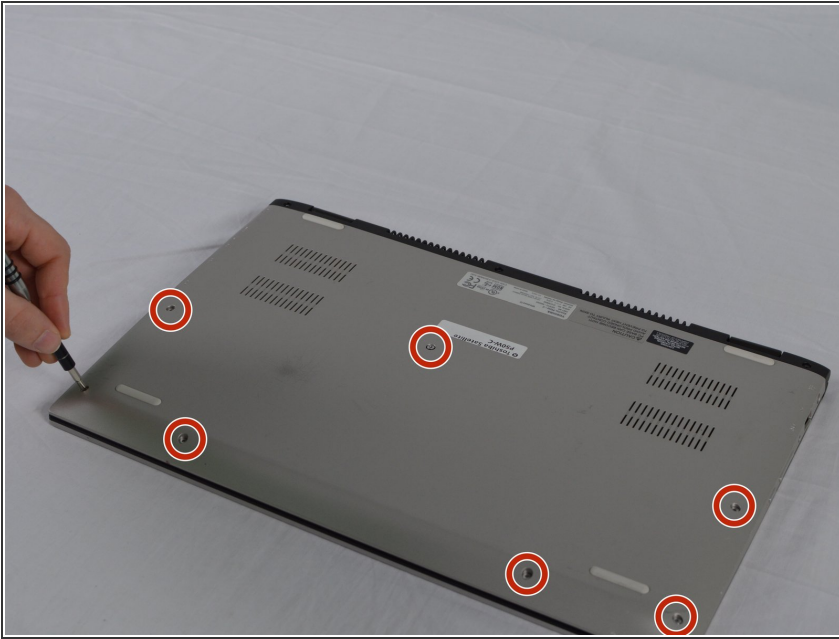
INTRODUCTION

The battery is the main source of the device. Be sure to unplug the device from any power source before attempting to remove the battery.

TOOLS:

- [JIS #1](#) (1)
 - [Heavy-Duty Spudger](#) (1)
 - [Tweezers](#) (1)
-

Step 1 — Back Cover



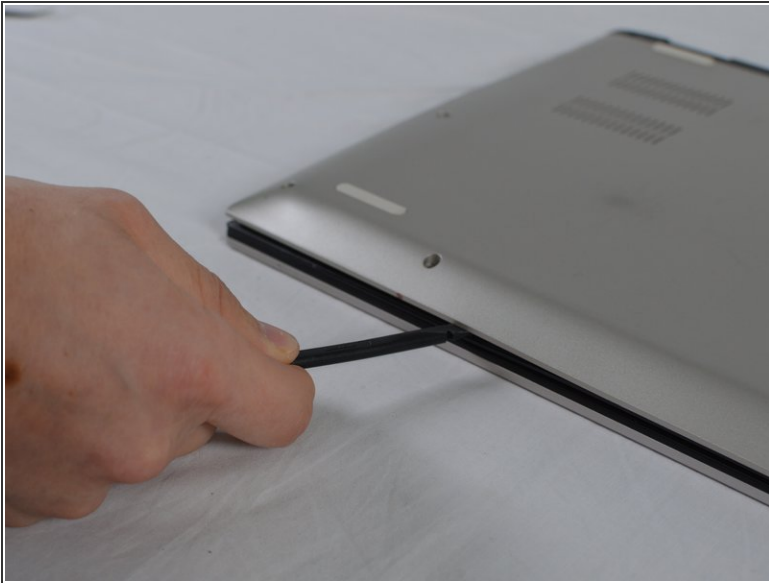
- ⚠ Turn the laptop off, unplug the AC adapter, and any other auxiliary components.
- Turn over the laptop and proceed to take out the seven 5mm silver JIS #1 head screws. If some of the screws are difficult to take out use the tweezers to help.

Step 2



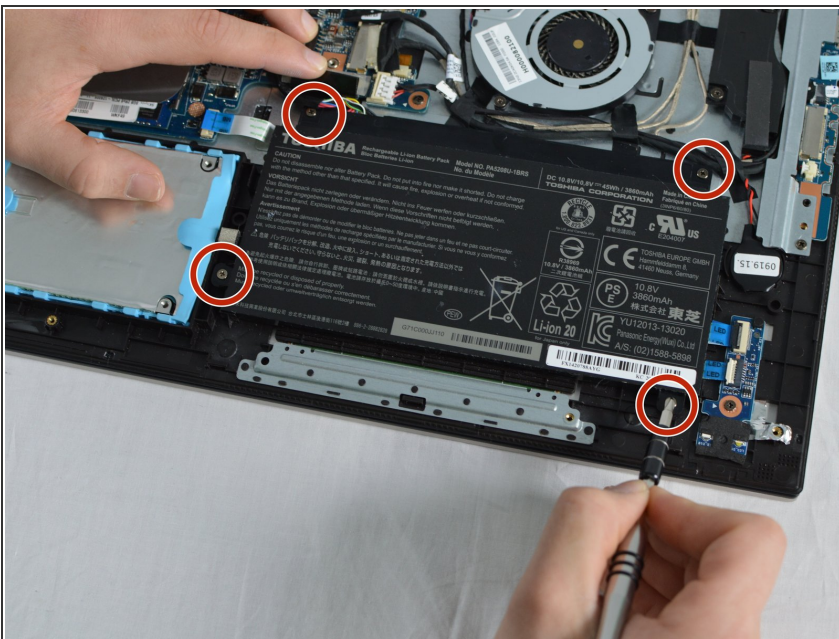
- Use the screwdriver to take out the three 5mm black JIS #1 head screws that are located on the hinge.

Step 3



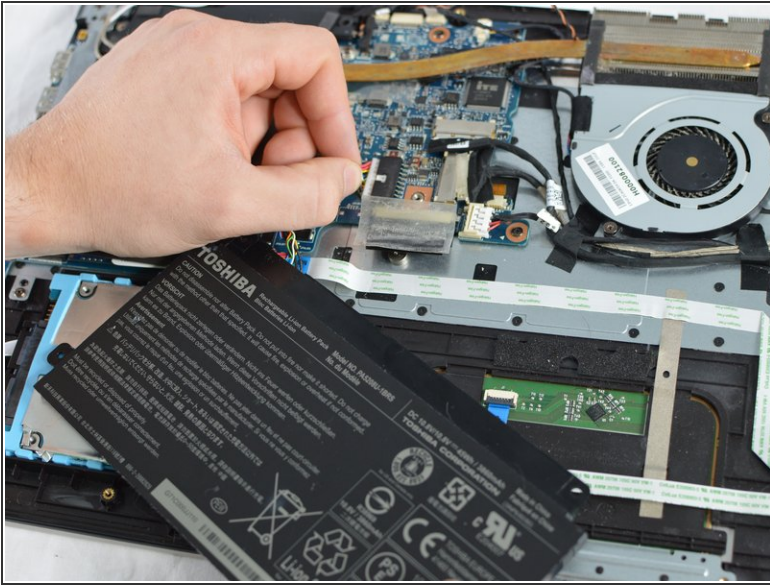
- Use the spudger to pry under the back cover until it pops off.

Step 4 — Battery



- Unscrew the four 5 mm JIS #1 head screws holding the battery to the device and gently remove the battery.

Step 5



- Disconnect the battery from the motherboard by gently pulling out the black connector.

To reassemble your device, follow these instructions in reverse order.