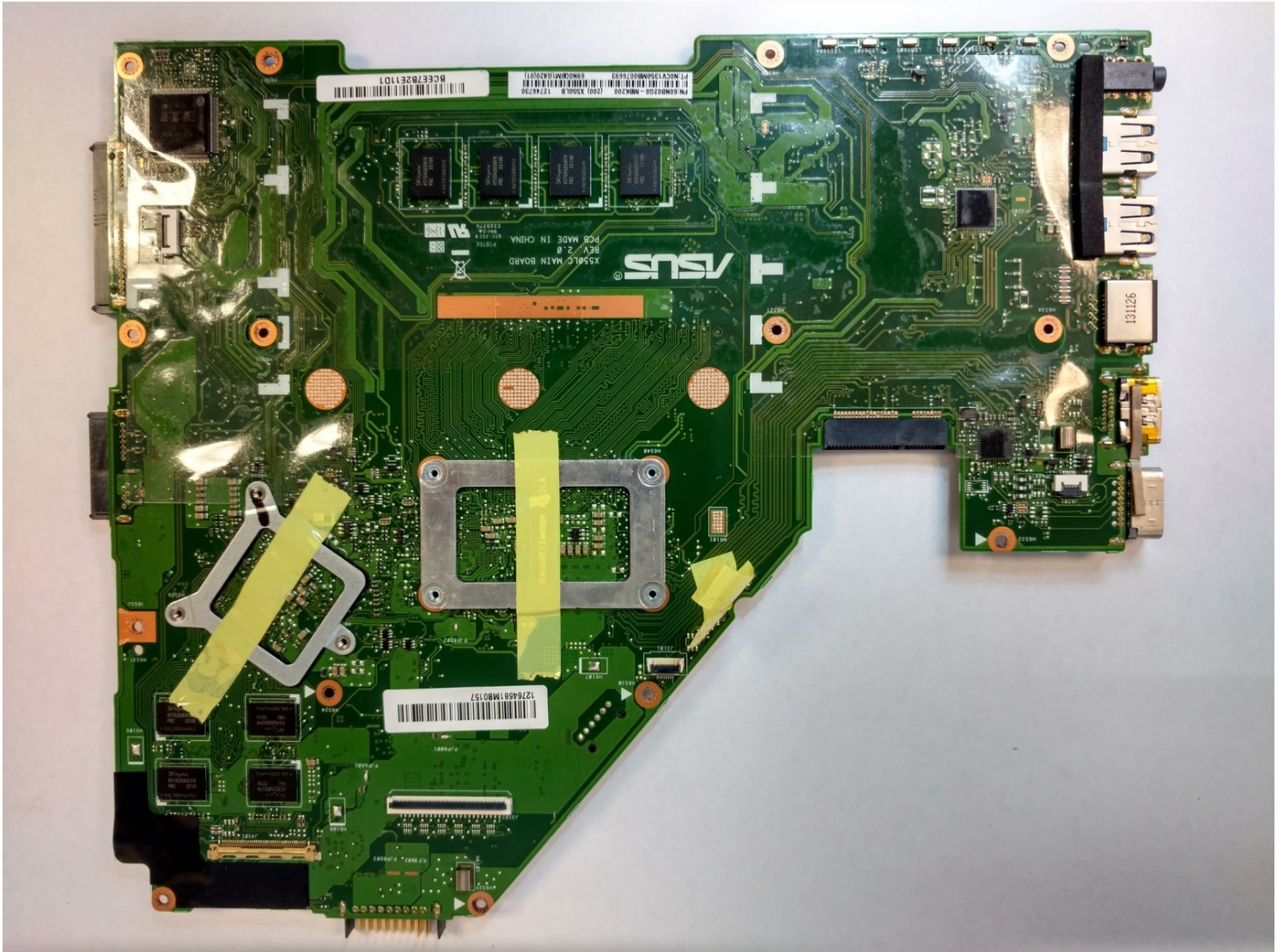




ASUS X550LB-DS71 Motherboard Replacement

The motherboard is a large, crucial component...

Written By: Nathan Dyer



INTRODUCTION

The motherboard is a large, crucial component of the laptop that communicates with the rest of the components and controls most of the major functions. As such, it is also known as the heart of the laptop.

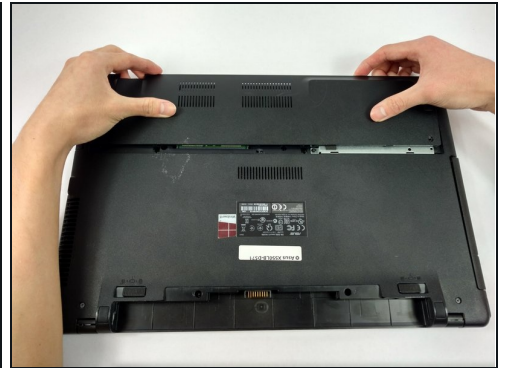
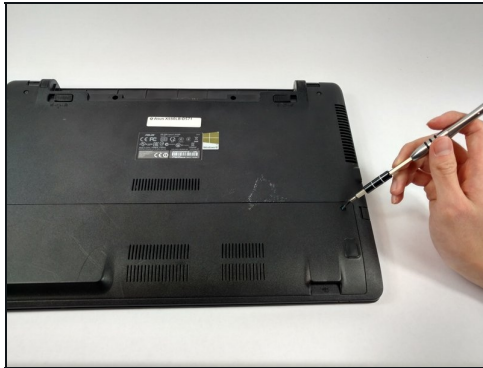
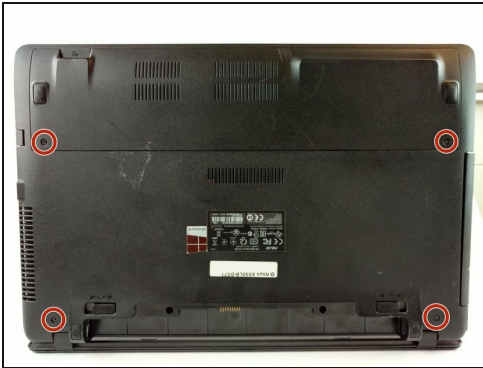
TOOLS:

[iFixit Opening Tool](#) (1)

[Phillips #0 Screwdriver](#) (1)

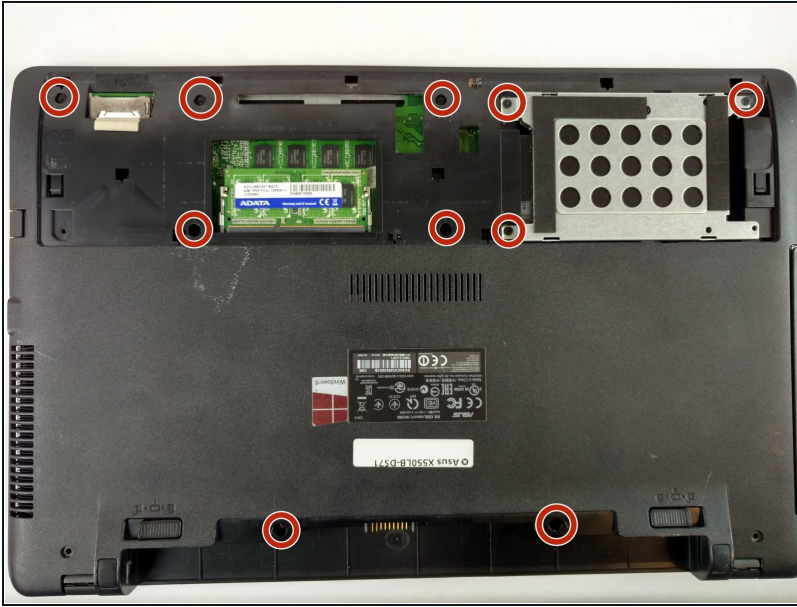
[Phillips #1 Screwdriver](#) (1)

Step 1 — Motherboard



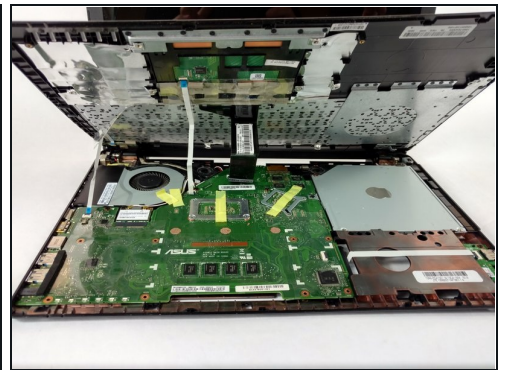
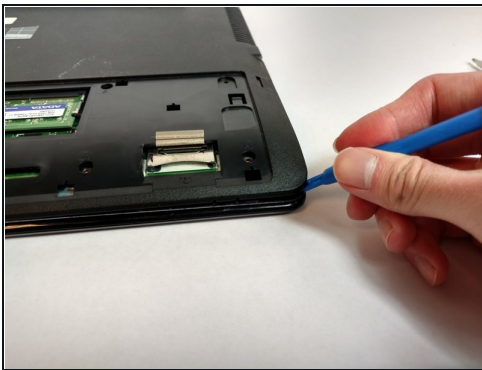
- ① Make sure to switch off your laptop before starting.
- Place the laptop on a flat surface with the bottom side facing upwards.
- Using the Phillips #1 Screwdriver, remove the four 4mm screws in the back panel.
- Using both hands, slide the back panel away from the laptop horizontally.

Step 2



- Using the Phillips #0 Screwdriver, remove the ten 2mm screws at the marked locations.
- ⓘ At this point, it is advised to disconnect the hard drive from the motherboard.

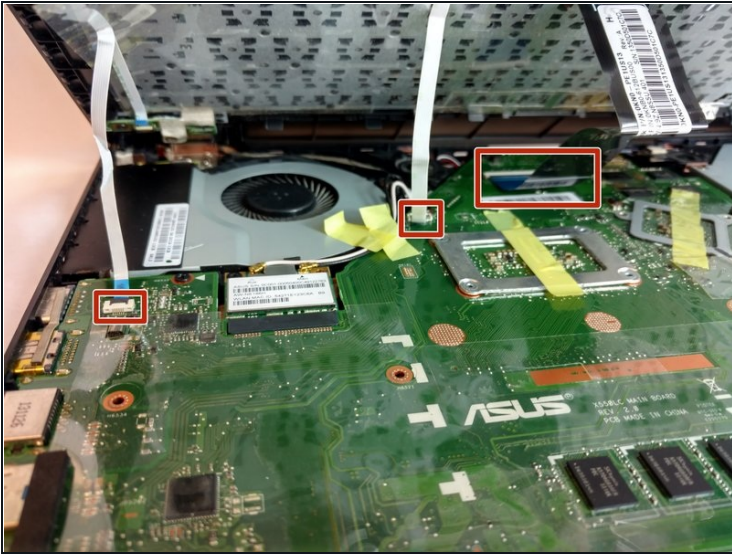
Step 3



- Using the plastic opening tool, open the back cover of the laptop.
- ⓘ It is recommended that you start from a corner and run the tool along the edge of the cover.

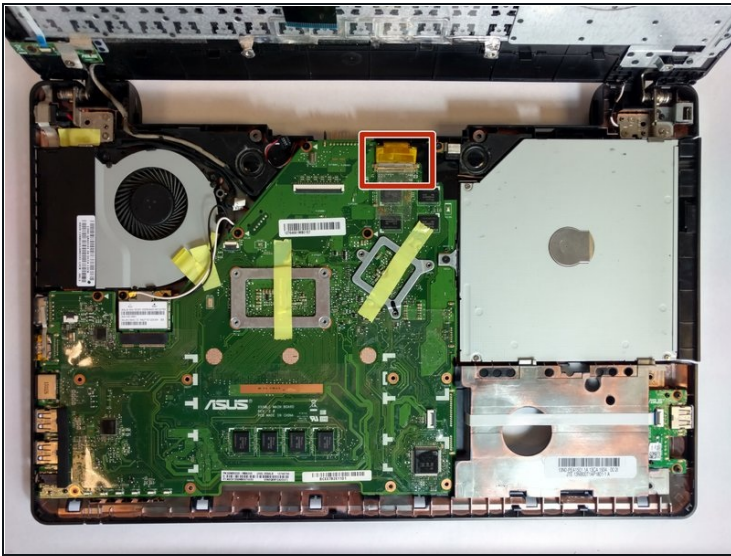
⚠ Be careful not to bend or crack the cover.

Step 4



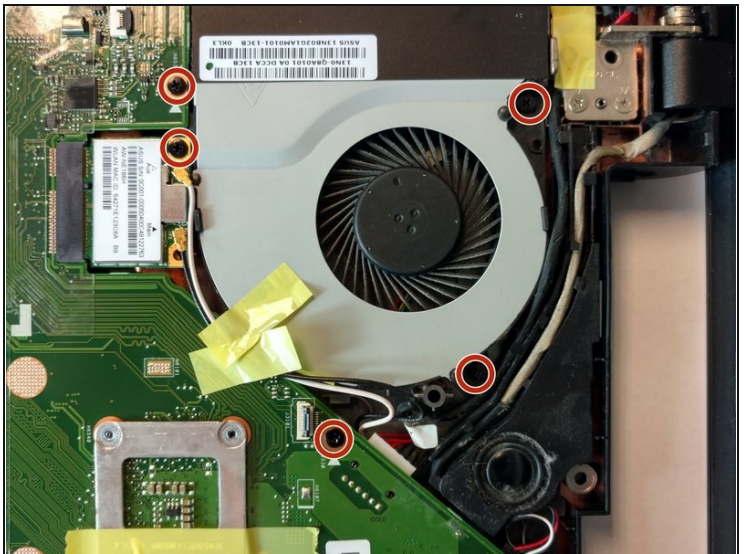
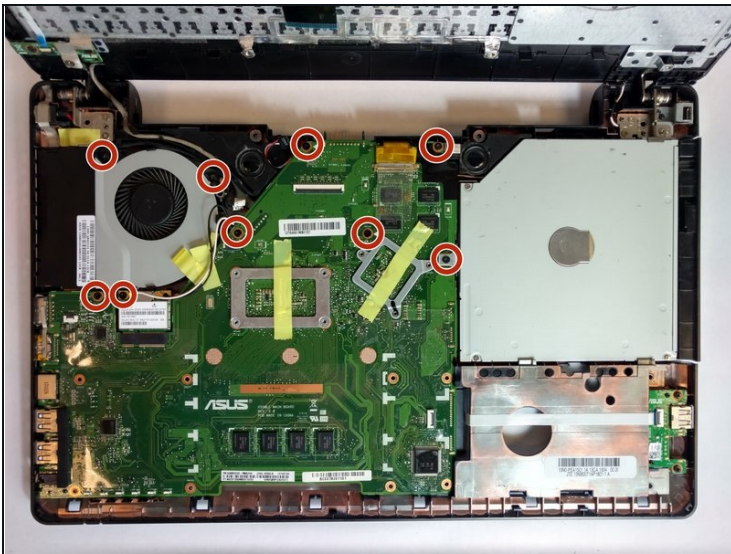
- Locate the three ribbon connectors.
 - Using the plastic opening tool, flip up all three gray tabs and remove the ribbon connectors from the motherboard.
- ⚠ Once the tabs are released, the ribbons will be easy to remove. Do not pull on the ribbons.

Step 5



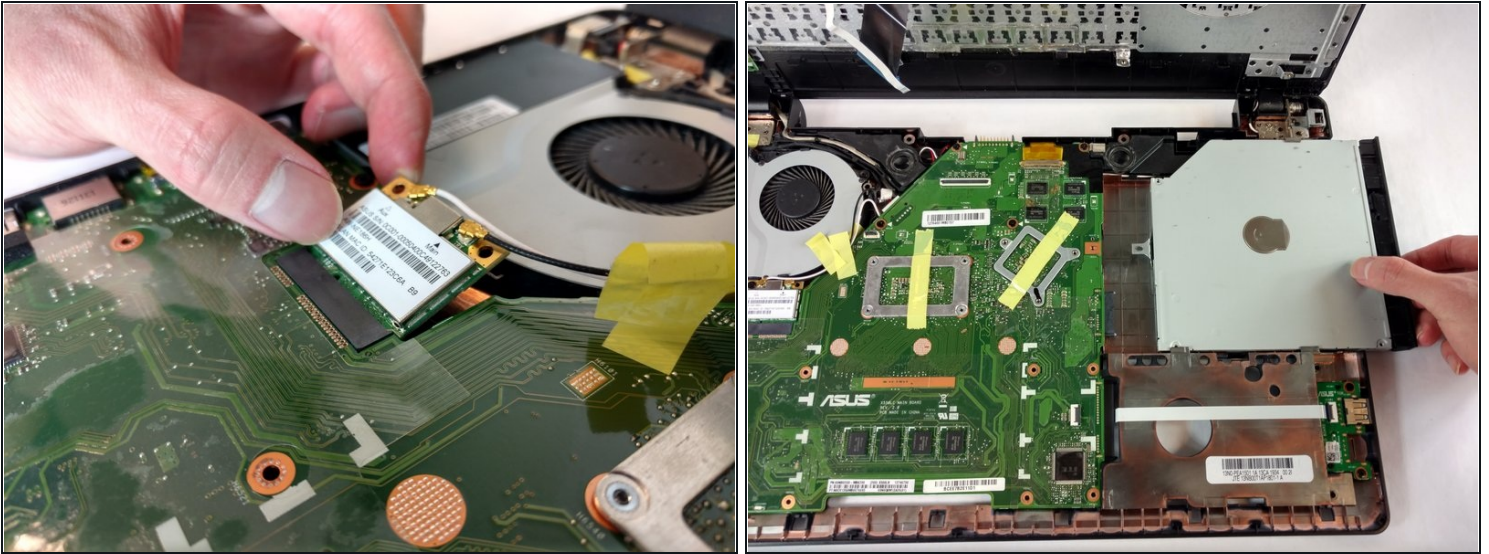
- Locate the gold ribbon connecting the motherboard to the display.
- Lift up the tape and disconnect the ribbon.

Step 6



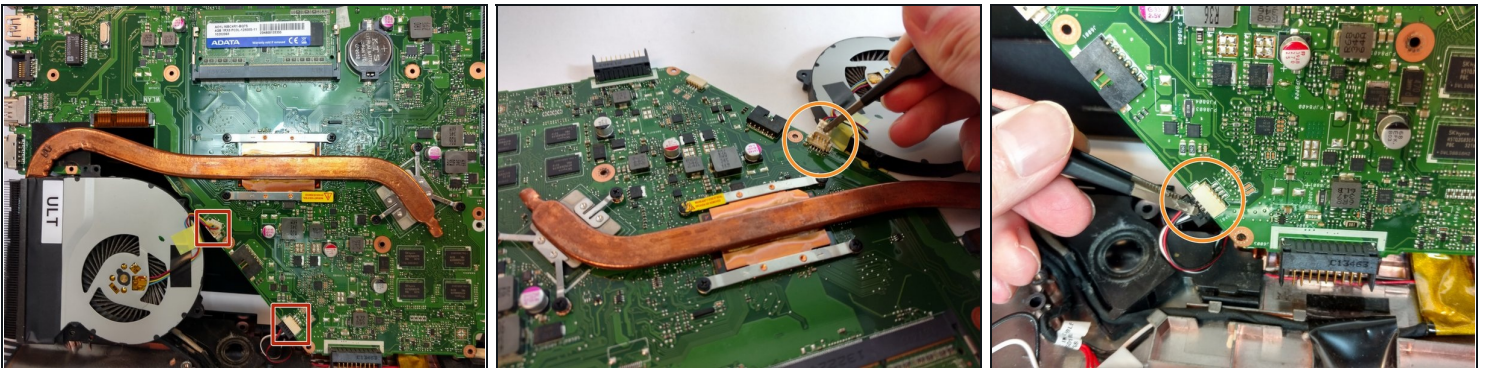
- Using the Phillips #0 Screwdriver, remove the nine 2mm screws at the marked locations.

Step 7



- Disconnect the WLAN Card from the motherboard by pulling the connector upwards.
- Disconnect the optical drive from the motherboard by sliding it to the right.

Step 8



- Flip the motherboard to show the underside.
- Locate the two square connections attached to the motherboard.
- Disconnect them using blunt [tweezers](#).

Step 9



- Using the Phillips #0 Screwdriver, remove the seven 2mm screws at the marked locations.
- Remove the heat sink from the motherboard.

To reassemble your device, follow these instructions in reverse order.