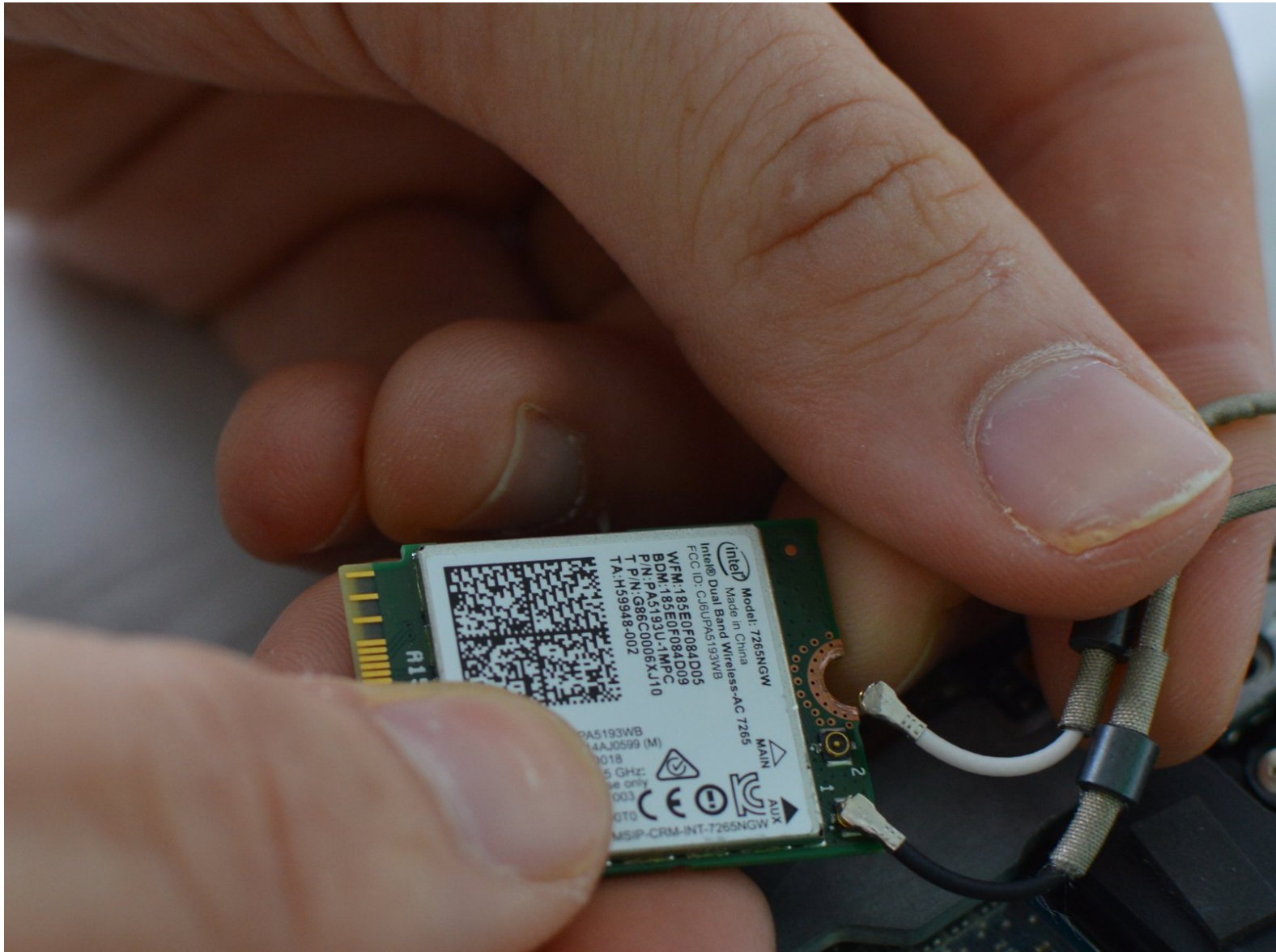




# Toshiba Satellite P50W-C Wifi Module Replacement

This guide will show how to replace the wifi module in the Toshiba Satellite P50W-C

Written By: Sarah Fordjour



---

## INTRODUCTION

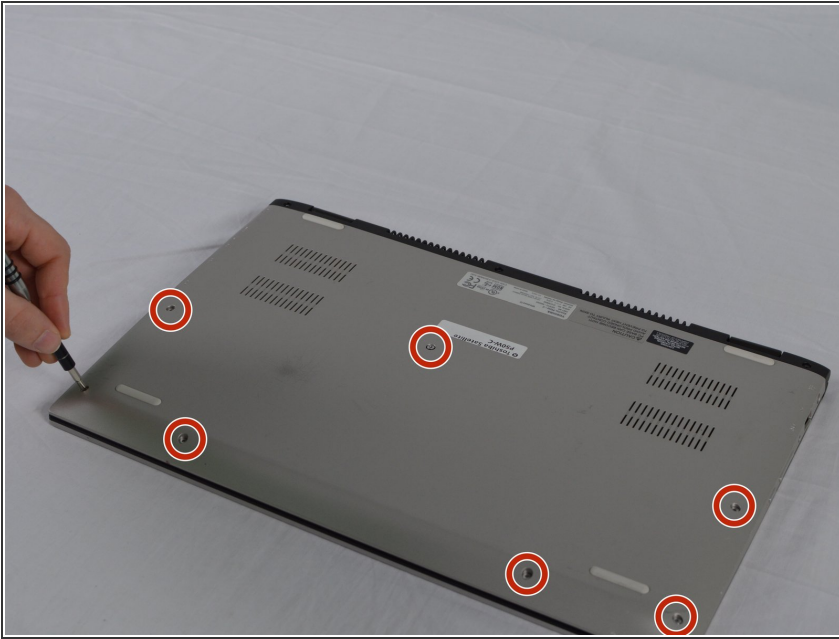
The wifi module connects the device to wireless internet networks. Be careful when handling the wifi module.



### TOOLS:

- [JIS #1](#) (1)
  - [Heavy-Duty Spudger](#) (1)
  - [Tweezers](#) (1)
-

## Step 1 — Back Cover



- ⚠ Turn the laptop off, unplug the AC adapter, and any other auxiliary components.
- Turn over the laptop and proceed to take out the seven 5mm silver JIS #1 head screws. If some of the screws are difficult to take out use the tweezers to help.

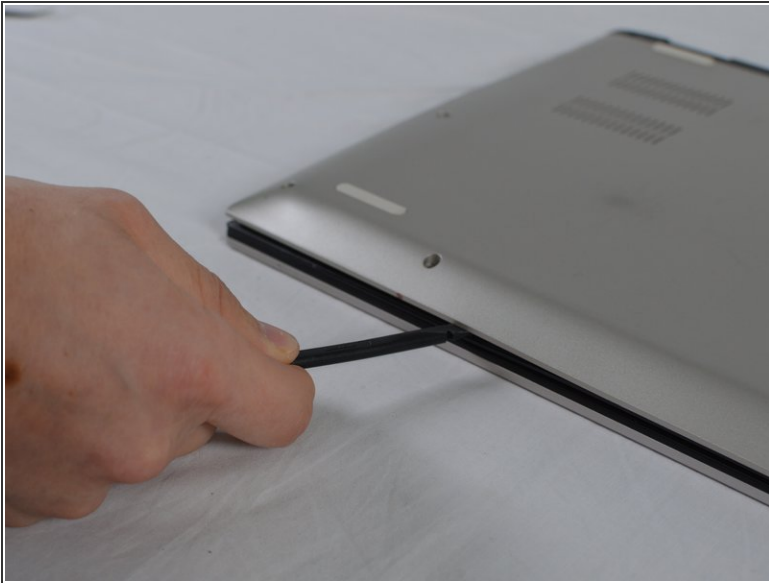
## Step 2



- Use the screwdriver to take out the three 5mm black JIS #1 head screws that are located on the hinge.

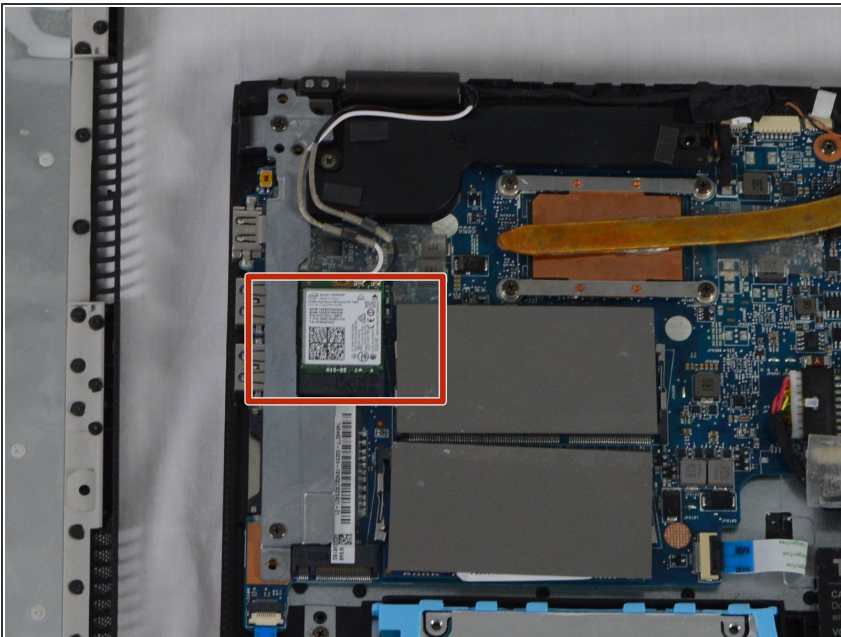


### Step 3



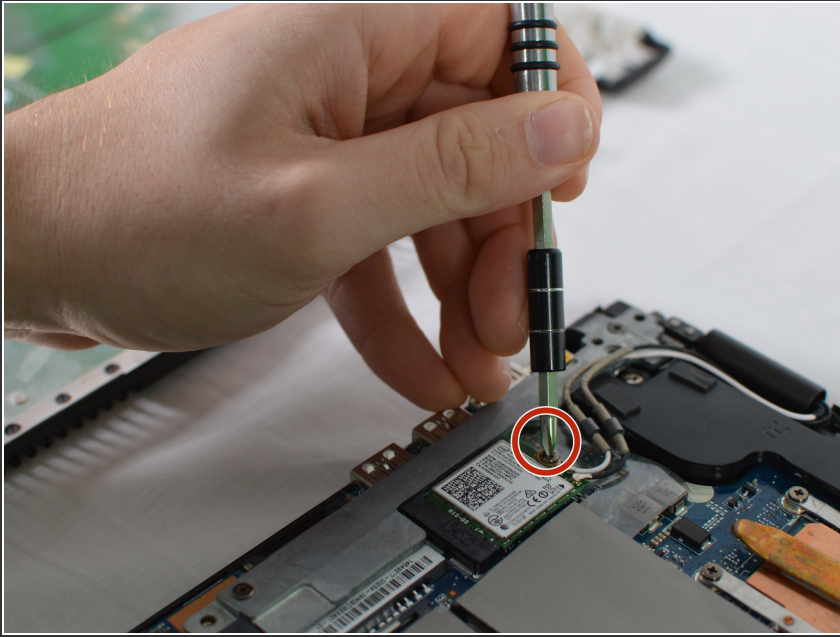
- Use the spudger to pry under the back cover until it pops off.

### Step 4 — Wifi Module



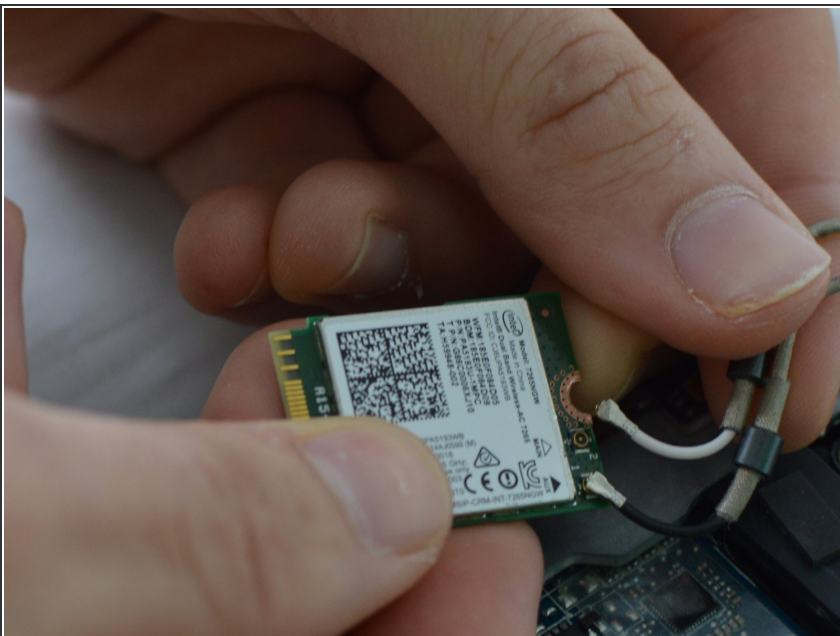
- Locate the Wi-Fi module in the device which is located next to the ram.

## Step 5



- Unscrew the 3mm JIS head screw with J1#1. This screw is holding the Wi-Fi module to the device

## Step 6



- Remove the black and white wires that are connected to the device by gently pulling on it.

To reassemble your device, follow these instructions in reverse order.