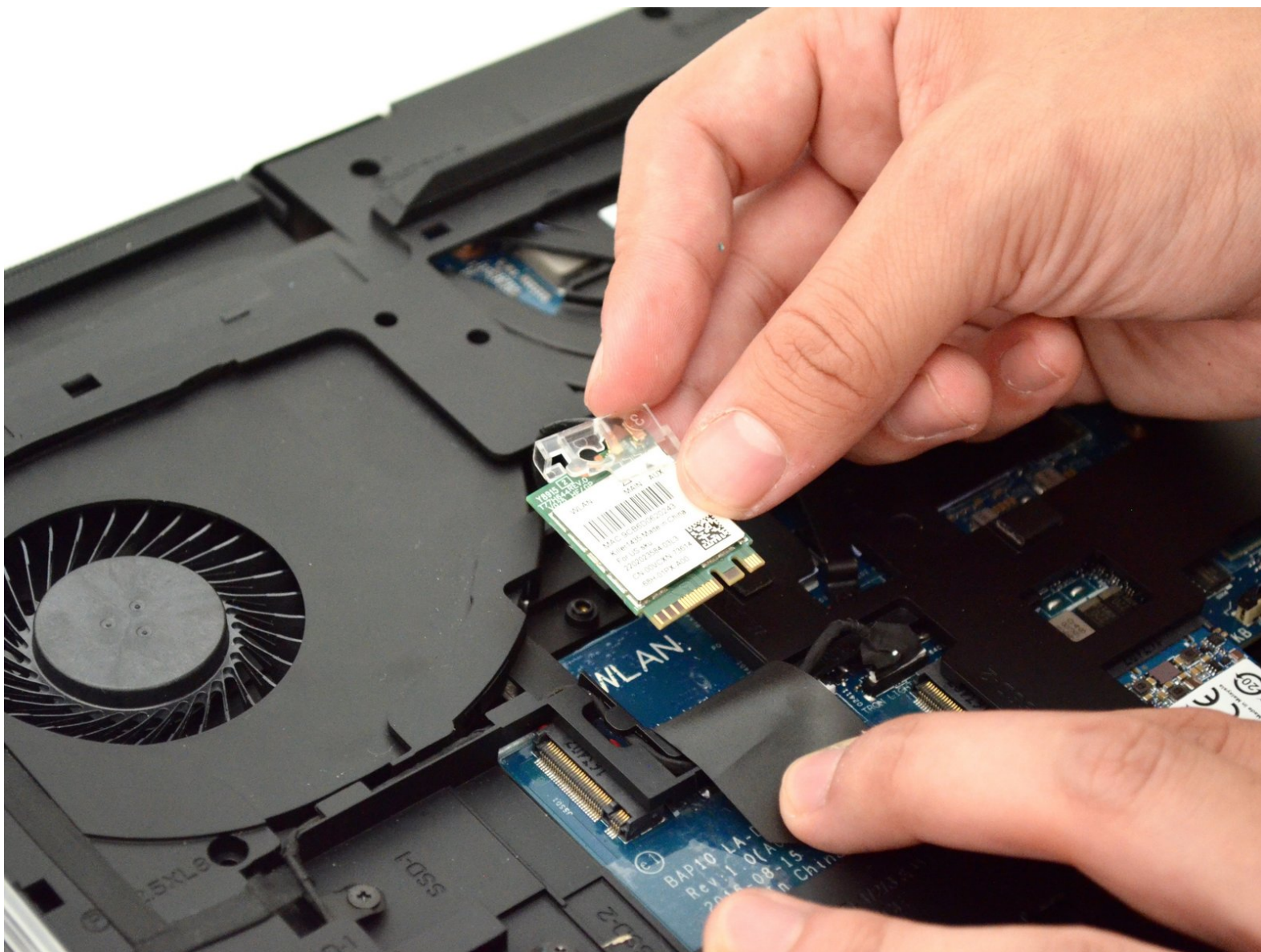




Alienware 17 R4 Wi-Fi Card Replacement

This guide will teach you how to remove the...

Written By: Hector Mendez III



INTRODUCTION

This guide will teach you how to remove the wi-fi card.



TOOLS:

- [Phillips Head Screwdriver: Size PH1](#) (1)
 - [iFixit Opening Tool](#) (1)
-

Step 1 — Base Cover



- Use a **PH1 screwdriver bit** to remove the **six M2.5x13 screws (2.4 mm)** on the back of the laptop.
- Use a **PH1 screwdriver bit** to loosen the **one M2x3 screw (1.9 mm)**.
- ⓘ The **M2x3 screw (1.9 mm)** does not come out completely.

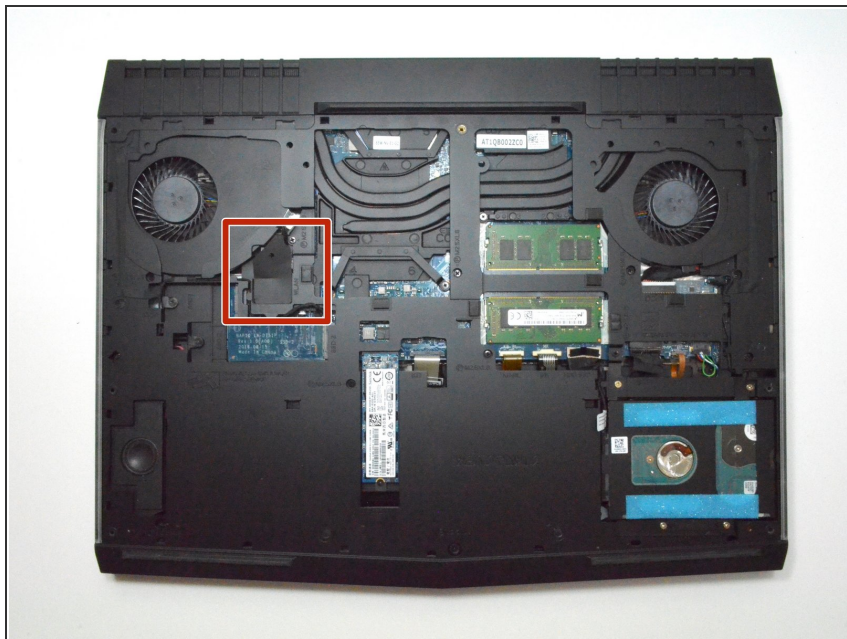
Step 2



- Pull the base cover up to remove it.
- If you are having trouble, insert a **plastic opening tool** into the divots along the laptop's edges to loosen.
- ⓘ Removing the cover may require some force.

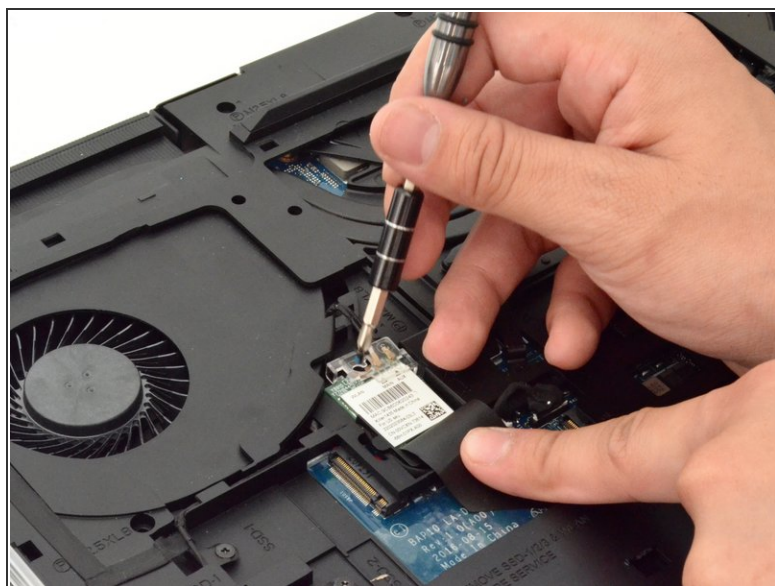
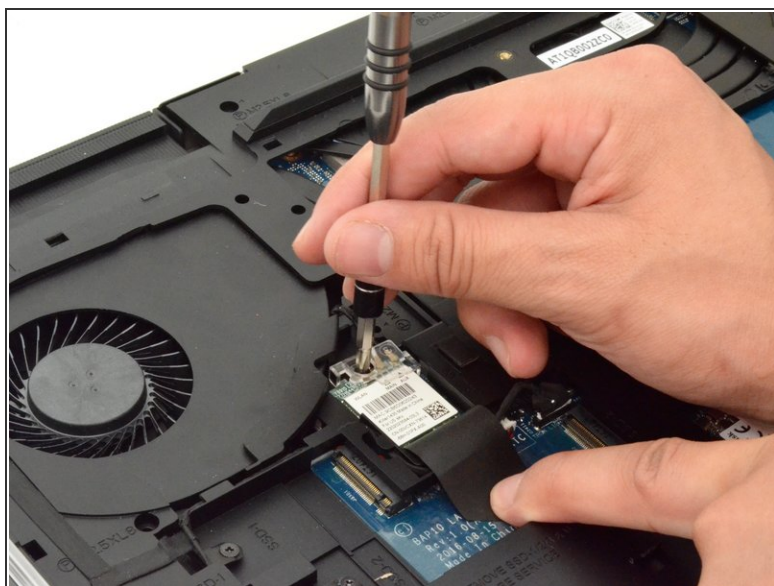
This document was generated on 2023-01-08 08:19:09 PM (MST).

Step 3 — Wi-Fi card



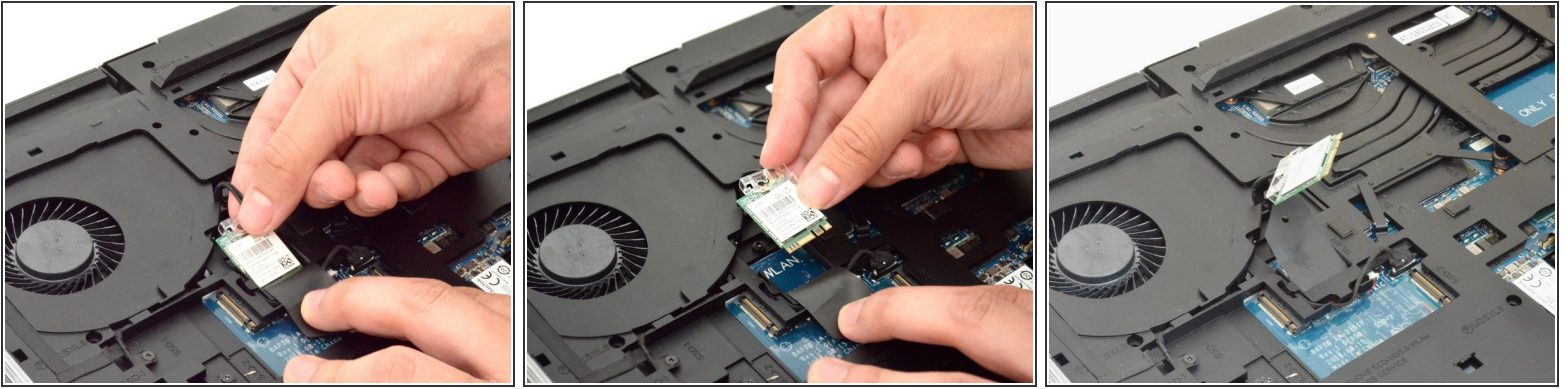
- Locate the WI-FI card.

Step 4



- Peel back plastic cover of wi-fi card.
- Use a **PH1 screwdriver bit** and remove the **one M2x3 screw (1.9 mm)**

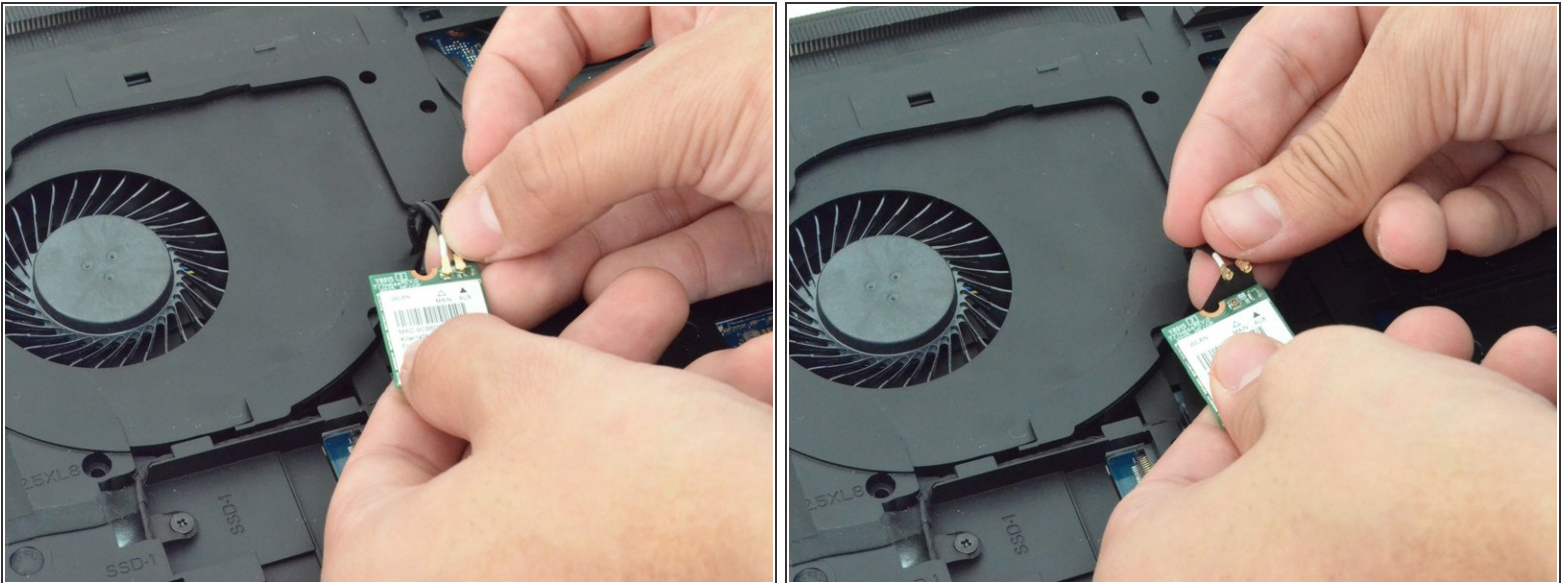
Step 5



- **Gently** undo the clips attached to the wi-fi card.

⚠ If the clip is not gently removed it is possible that the entire base will be torn off the wi-fi card. You will need to purchase a new wi-fi card if this occurs.

Step 6



- Locate the cables that connect the wi-fi card.
- Gently pull upwards to remove cables and slide the wi-fi card out from its slot.

To reassemble your device, follow these instructions in reverse order.