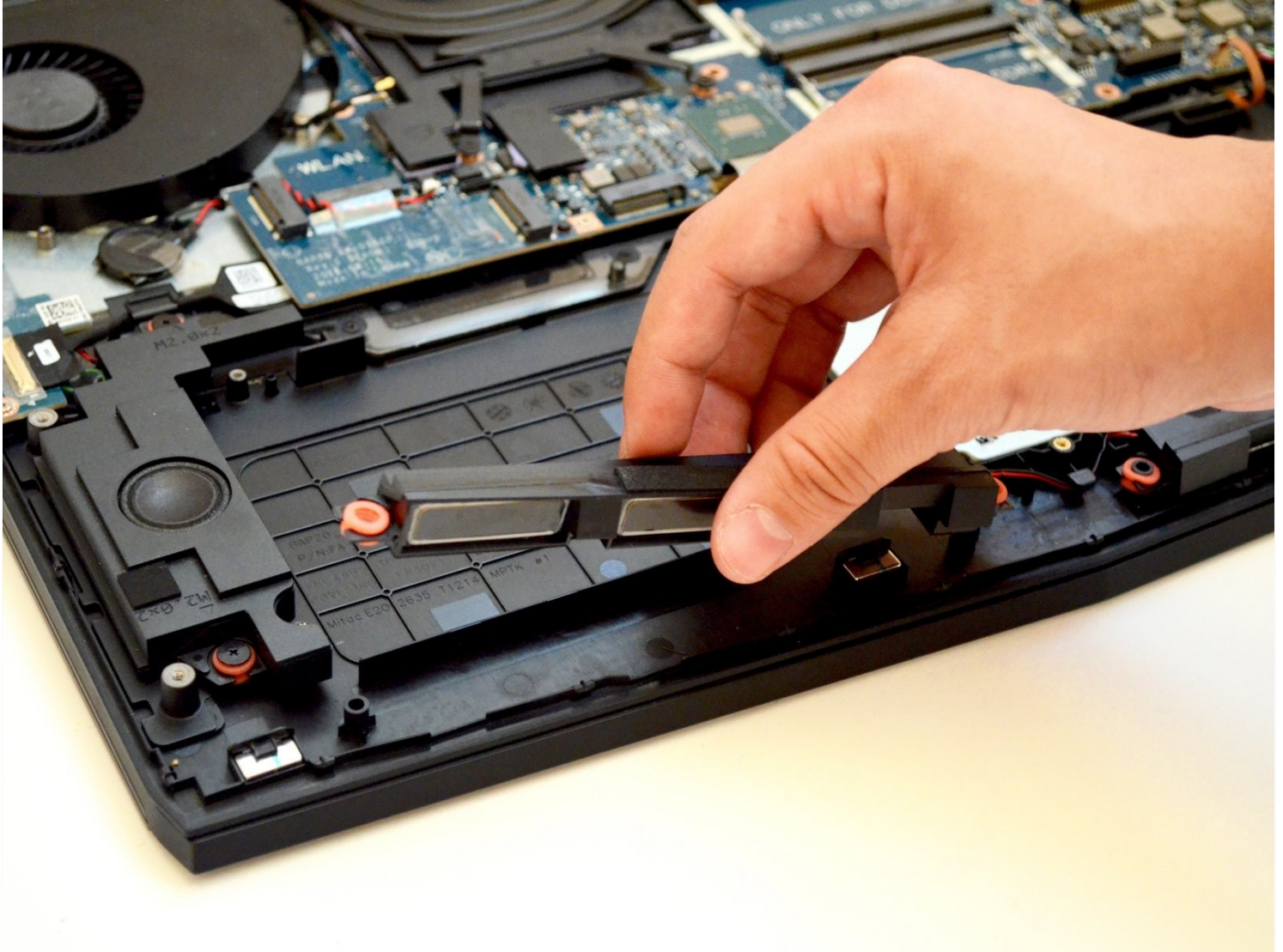




# Alienware 17 R4 Front Speakers Replacement

This guide will show you how to remove the...

Written By: Hector Mendez III



# INTRODUCTION

This guide will show you how to remove the front speakers from your device.

## TOOLS:

Phillips Head Screwdriver: Size PH1 (1)

iFixit Opening Tool (1)

## Step 1 — Base Cover



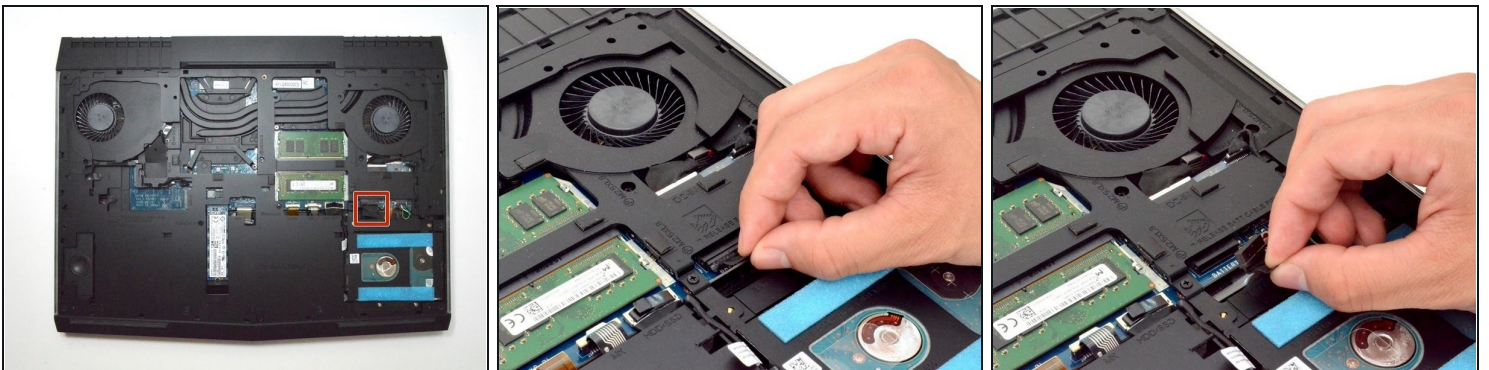
- Use a **PH1 screwdriver bit** to remove the **six M2.5x13 screws (2.4 mm)** on the back of the laptop.
- Use a **PH1 screwdriver bit** to loosen the **one M2x3 screw (1.9 mm)**.
  - ⓘ The **M2x3 screw (1.9 mm)** does not come out completely.

## Step 2



- Pull the base cover up to remove it.
  - If you are having trouble, insert a **plastic opening tool** into the divots along the laptop's edges to loosen.
- ⓘ Removing the cover may require some force.

## Step 3 — Hard Disk Drive (HDD)

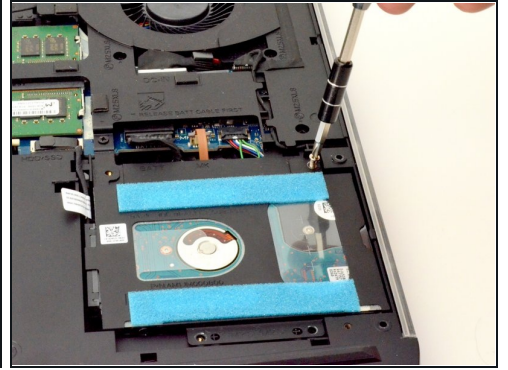
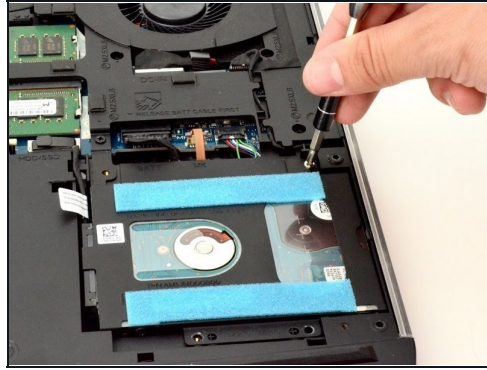
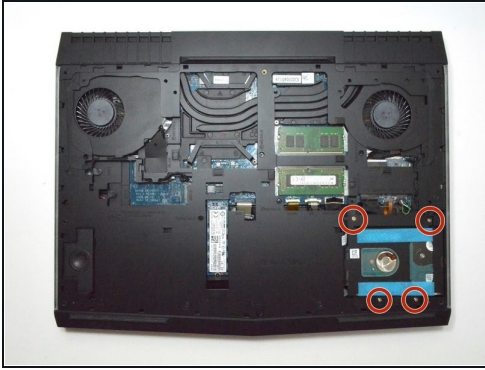


- Disconnect the **battery connector cable**, located on the right side of the laptop, above the hard disk drive.

ⓘ Once you have removed the cable, wait **5-10 minutes** to allow the laptop to power down.

⚠ Failure to remove the battery connector cable properly may damage other parts of the laptop.

## Step 4



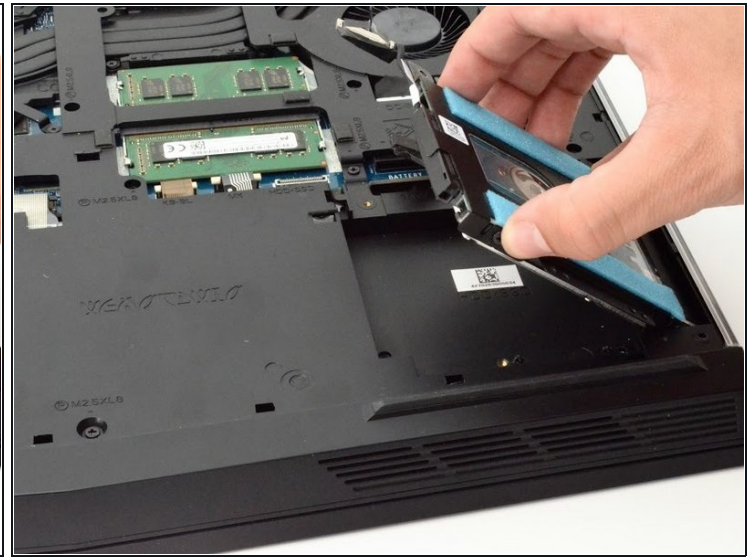
- Use a **PH1 screwdriver bit** to remove the **four M2.5x5 screws (2.4 mm)** on the hard disk drive.

## Step 5



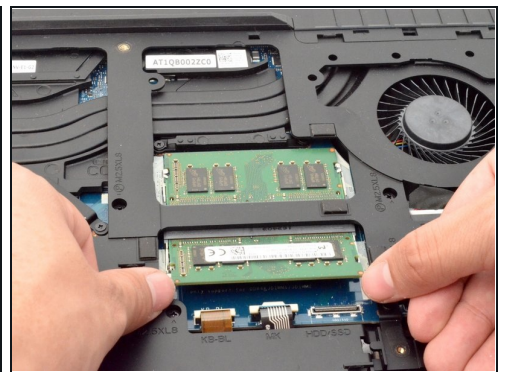
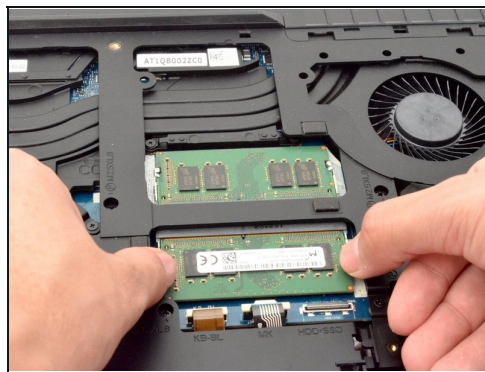
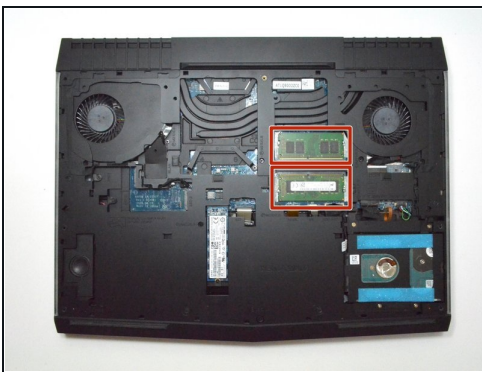
- **Gently** lift the HDD cable to disconnect it from the laptop.

## Step 6



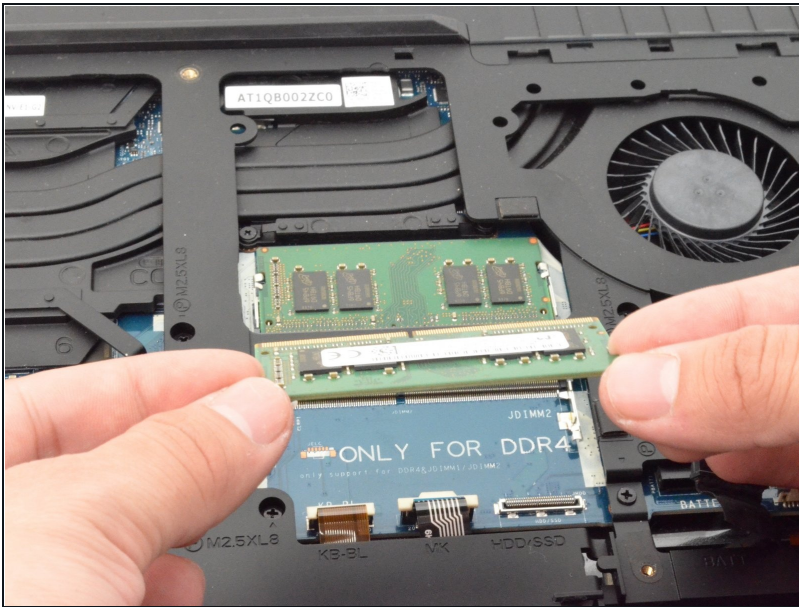
- Pull the hard drive up to remove.

## Step 7 — RAM



- Move the metal sidings outward to release the RAM card.

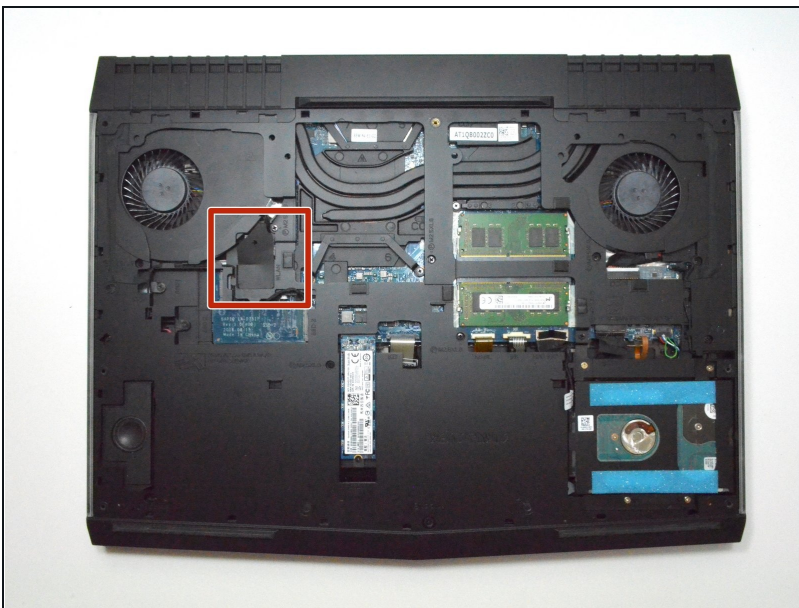
## Step 8



- Slide the RAM card out towards yourself to remove it.
- Repeat the same step for the RAM card above.

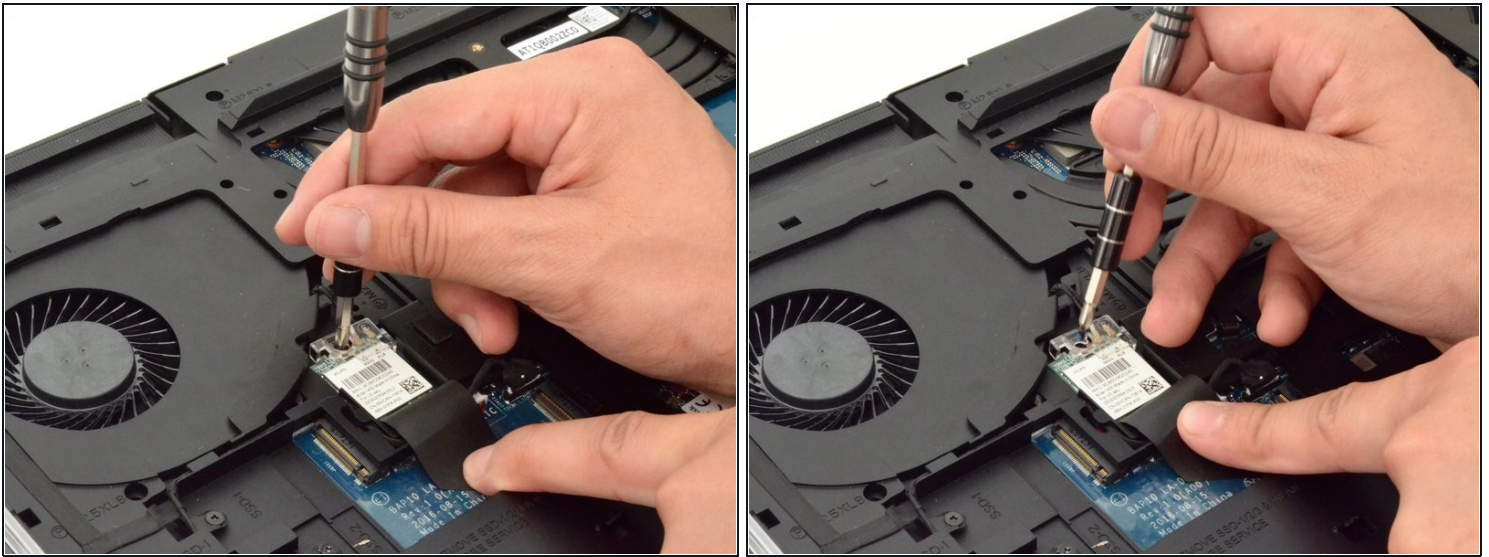
⚠ Slide the RAM card out carefully to avoid damaging it.

## Step 9 — Wi-Fi card



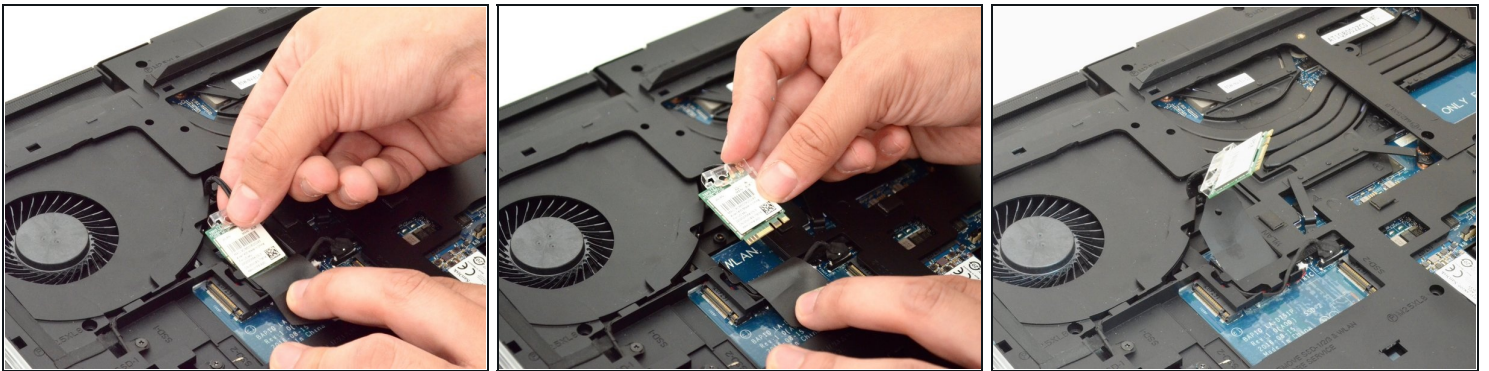
- Locate the WI-FI card.

## Step 10



- Peel back plastic cover of wi-fi card.
- Use a **PH1 screwdriver bit** and remove the **one M2x3 screw (1.9 mm)**

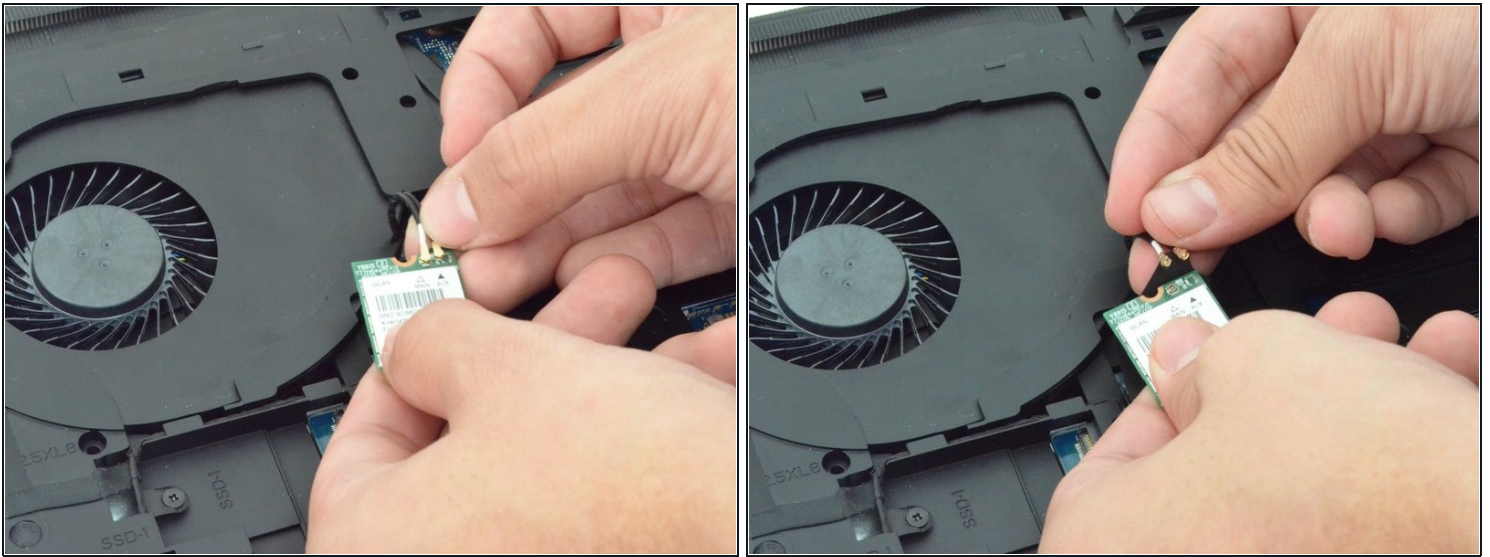
## Step 11



- **Gently** undo the clips attached to the wi-fi card.

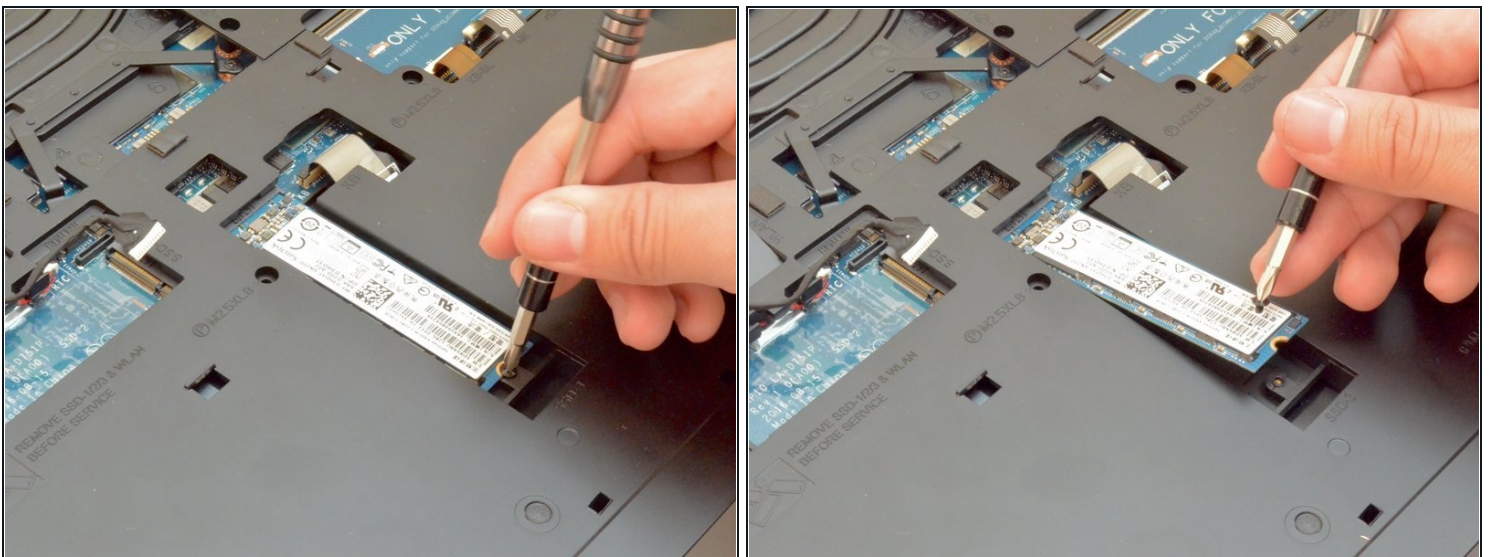
⚠ If the clip is not gently removed it is possible that the entire base will be torn off the wi-fi card. You will need to purchase a new wi-fi card if this occurs.

## Step 12



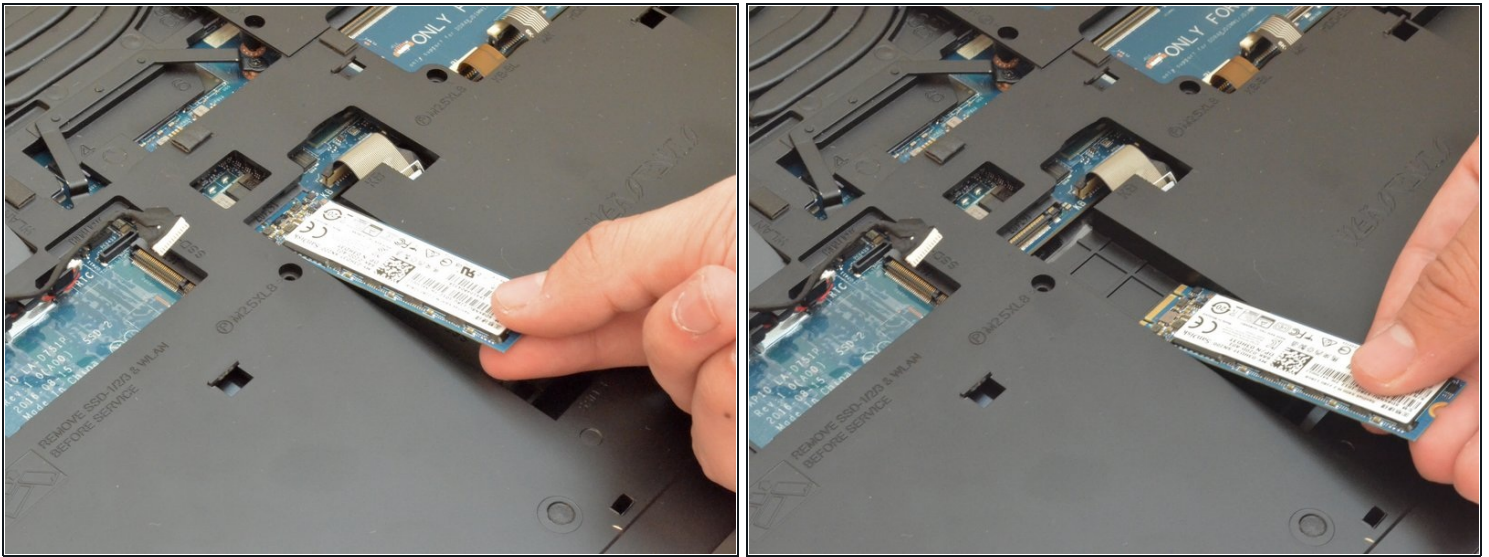
- Locate the cables that connect the wi-fi card.
- Gently pull upwards to remove cables and slide the wi-fi card out from its slot.

## Step 13 — Solid State Drive



- Remove the **one M2x3 screw (1.9 mm)** using a **PH1 screwdriver bit**

## Step 14



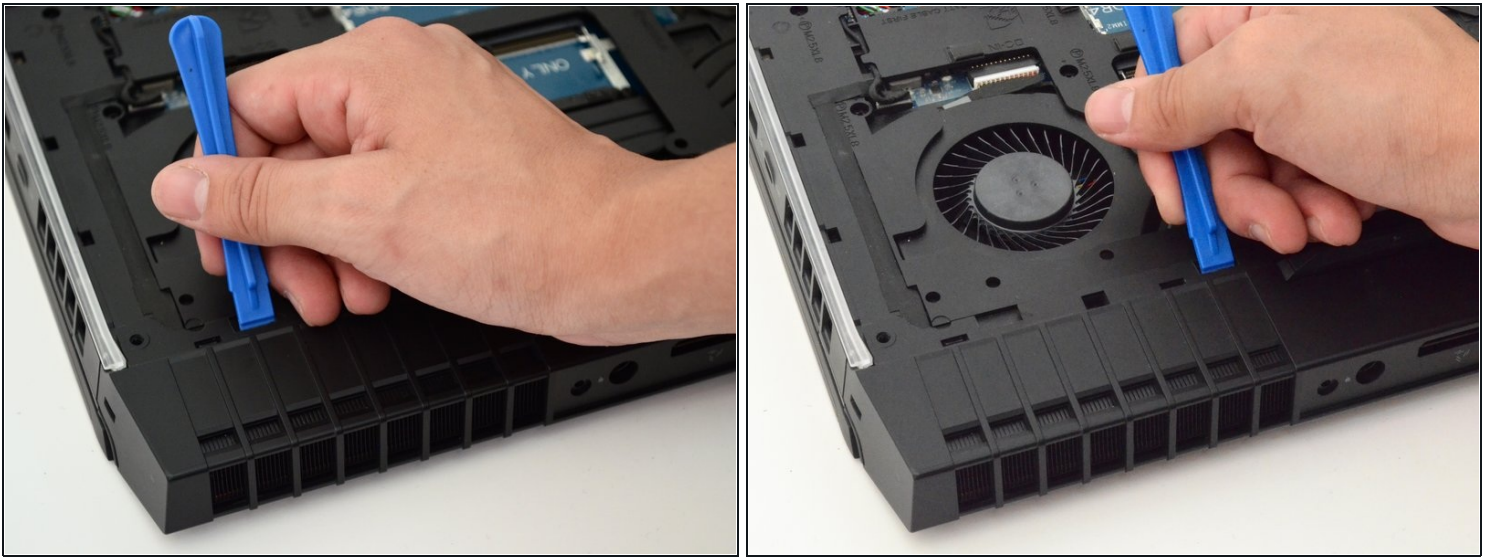
- Slide the solid state drive towards yourself to prevent damage to the card.

## Step 15 — Fan Shroud



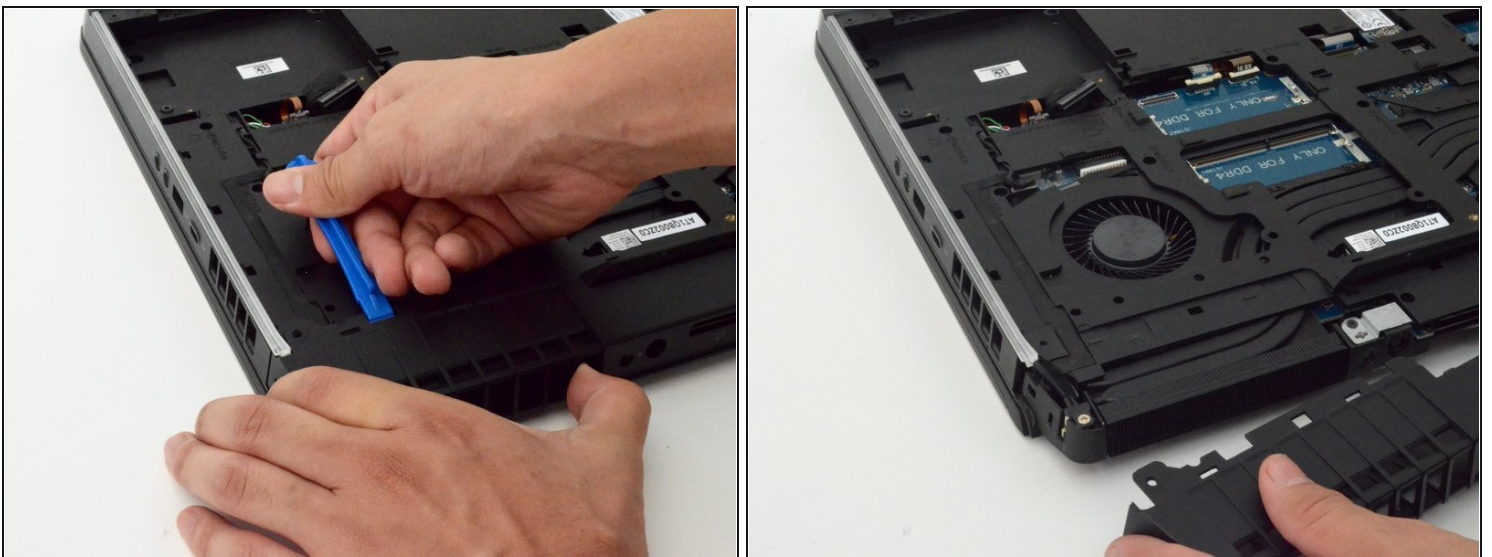
- Remove the **two M2.5x7 screws (2.44 mm)** located on the rear panel using a **PH1 screwdriver bit**.

## Step 16



- Insert the **plastic opening tool** under the fan shroud to slowly lift it up.
- Repeat process on the middle and opposite side.

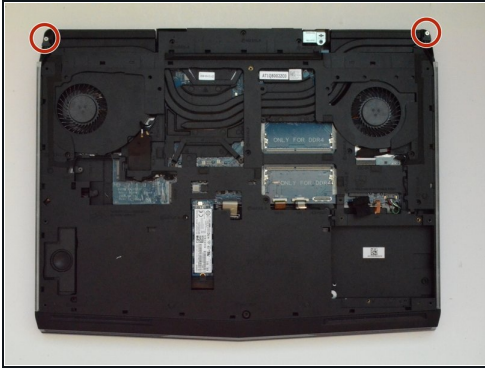
## Step 17



- Firmly lift the **plastic opening tool** and pull the fan shroud towards you.
- ⓘ This will take a large amount of force and will not come out easily the first time.

⚠ Careful not to tear out the piece causing damage to the fan shroud

## Step 18 — Plastic Cover



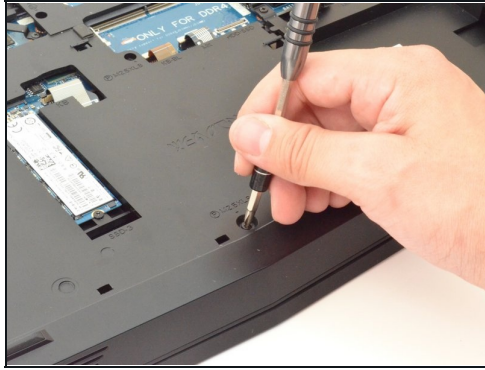
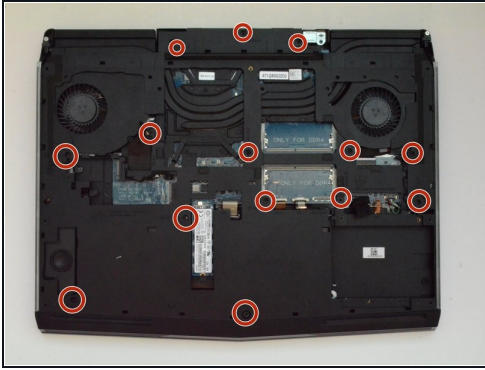
- Unscrew the **two M2x3 screws (1.9 mm)** at the top right and top left of the laptop that hold the tron lights in place.

## Step 19



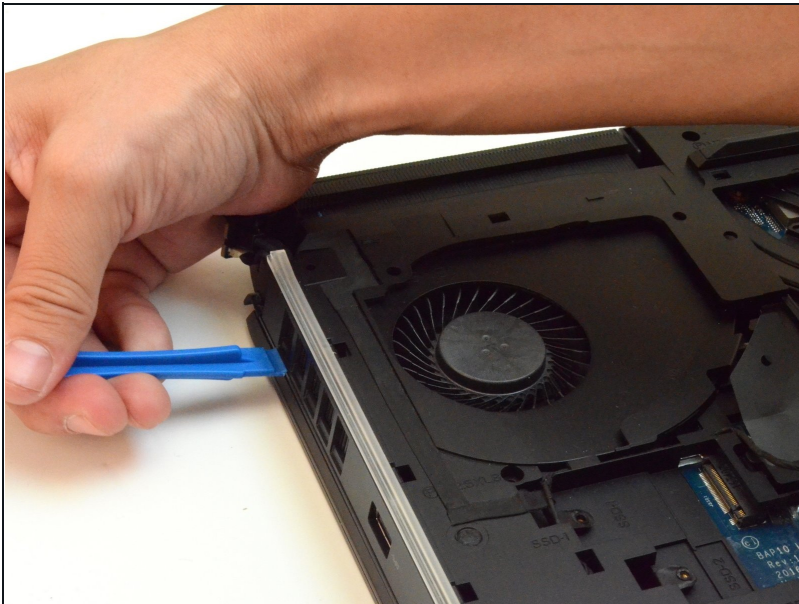
- Follow the wiring to unplug the tron lights.

## Step 20



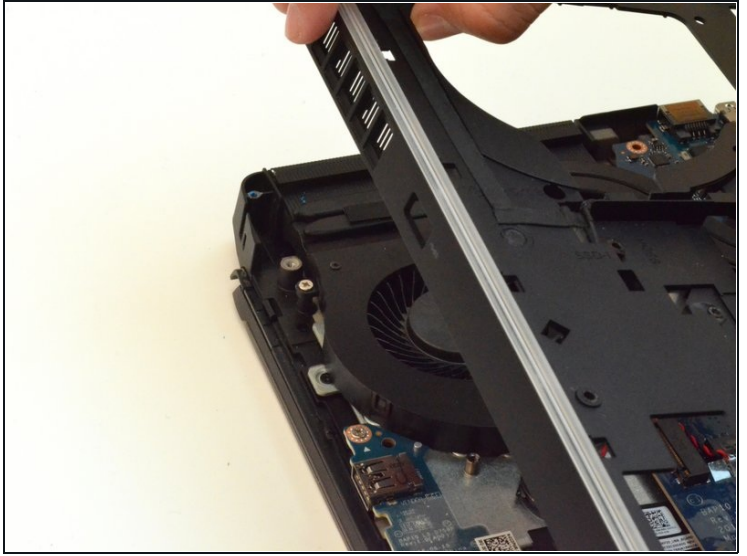
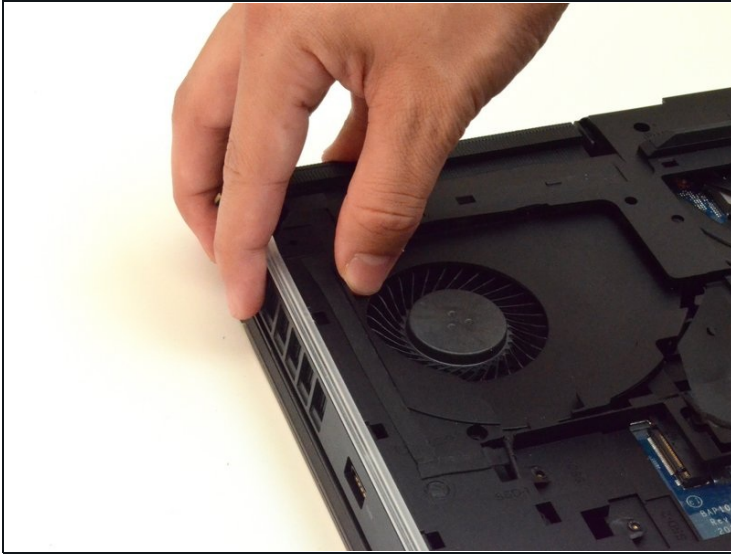
- Remove the **fourteen M2.5XL8' screws (2.4 mm)** located in the plastic cover using the **PH1 screwdriver**.

## Step 21



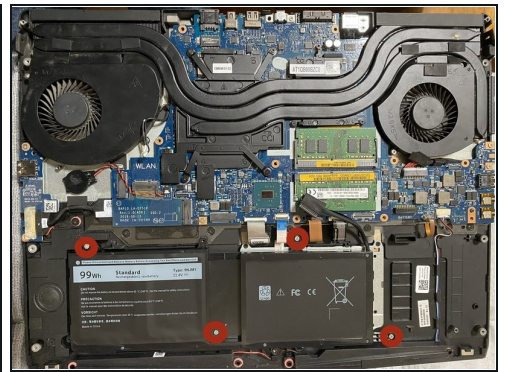
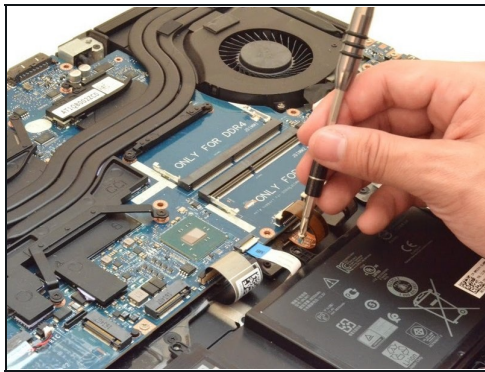
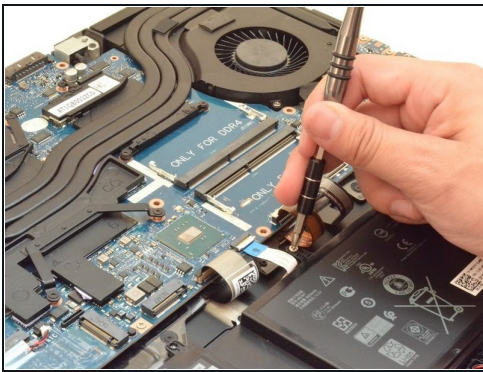
- Use the **plastic opening tool** to gently lift the sides of the cover.

## Step 22



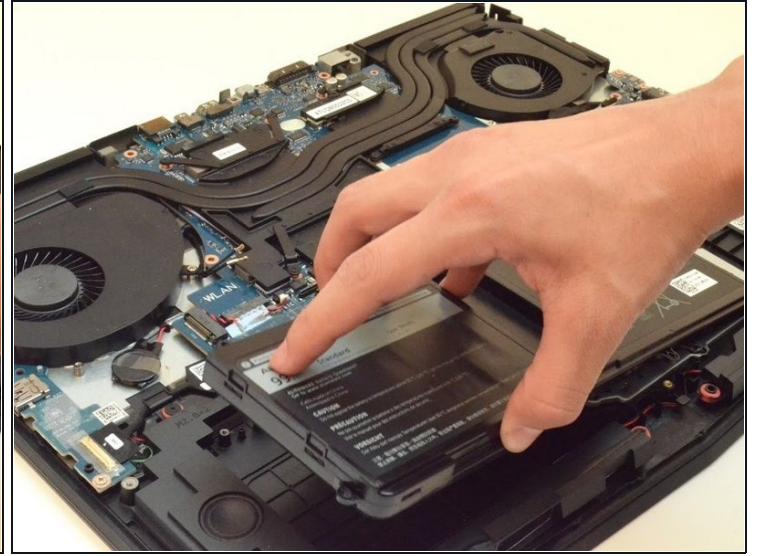
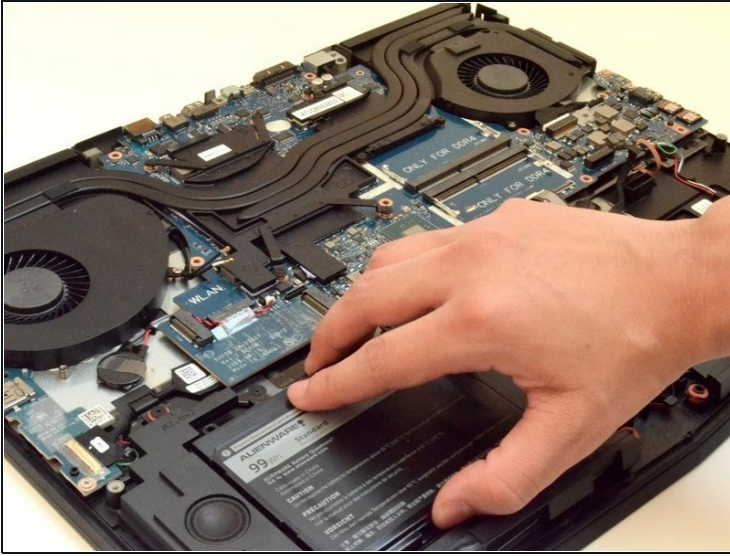
- Slowly lift up the plastic cover.

## Step 23 — Battery



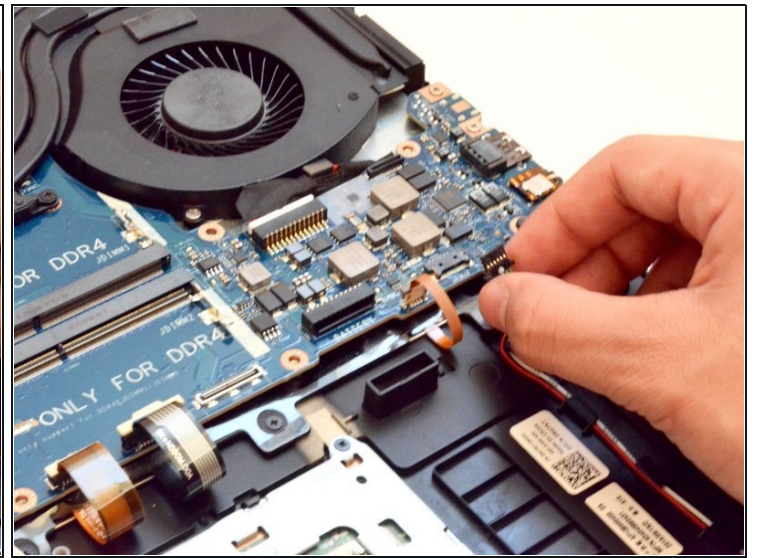
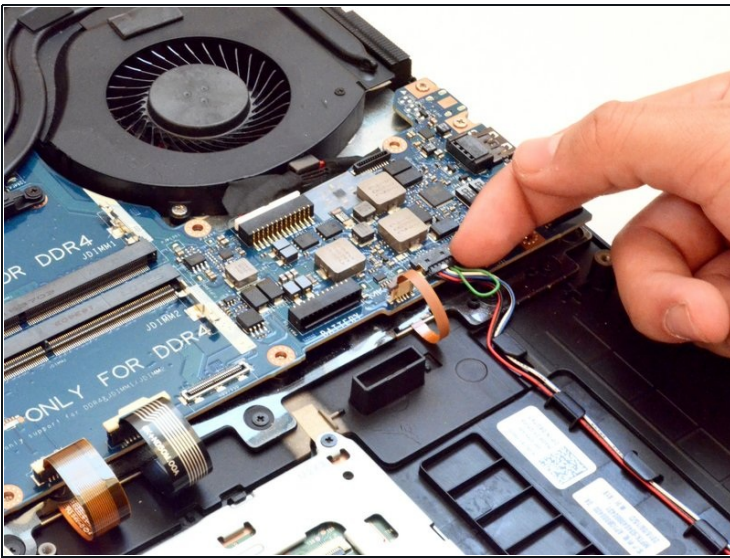
- Unscrew the **four M2.5 screws (2.4 mm)** with a **PH1 screwdriver bit**.

## Step 24



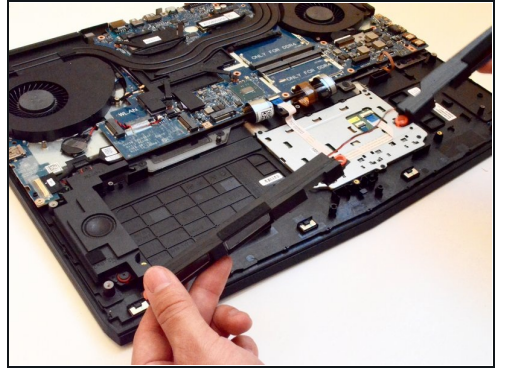
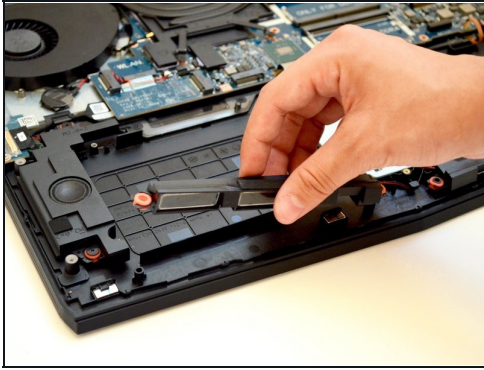
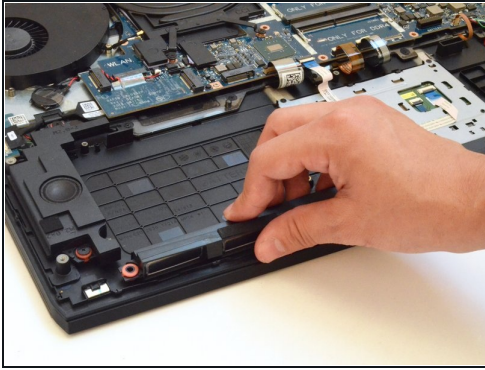
- Lift the battery up to remove it.

## Step 25 — Front Speakers



- Unplug the wire that connects the front speakers to the laptop.

## Step 26



- **Gently** lift up the front speakers.

ⓘ The speaker does not have screws holding it in place.

---

To reassemble your device, follow these instructions in reverse order.