



How to Patch a Torn Window Screen

A tear on your window screen renders the screen...

Written By: Alexis



INTRODUCTION

A tear on your window screen renders the screen useless. But if the tear has not pulled the mesh out of the frame and/or is not extremely large, then a full replacement—which can be costly and labor intensive—should not be necessary. This fix will guide you through fixing a tear on a screen easily and cost effectively. All you will need are some scissors, pliers or tweezers, and some patching mesh.

TOOLS:

Scissors (1)

Ruler (1)

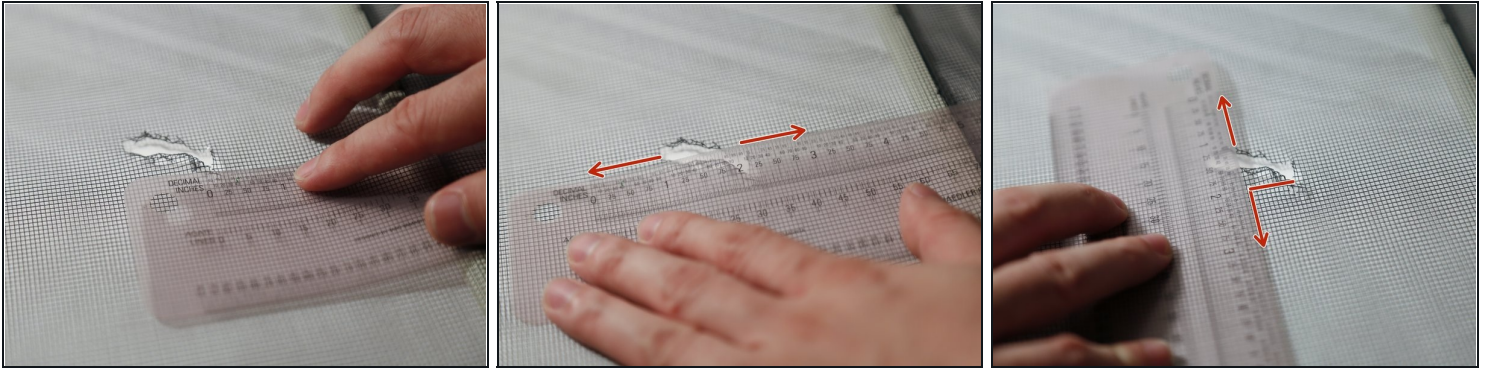
Large Needle Nose Pliers (1)

Step 1 — How to Patch a Torn Window Screen



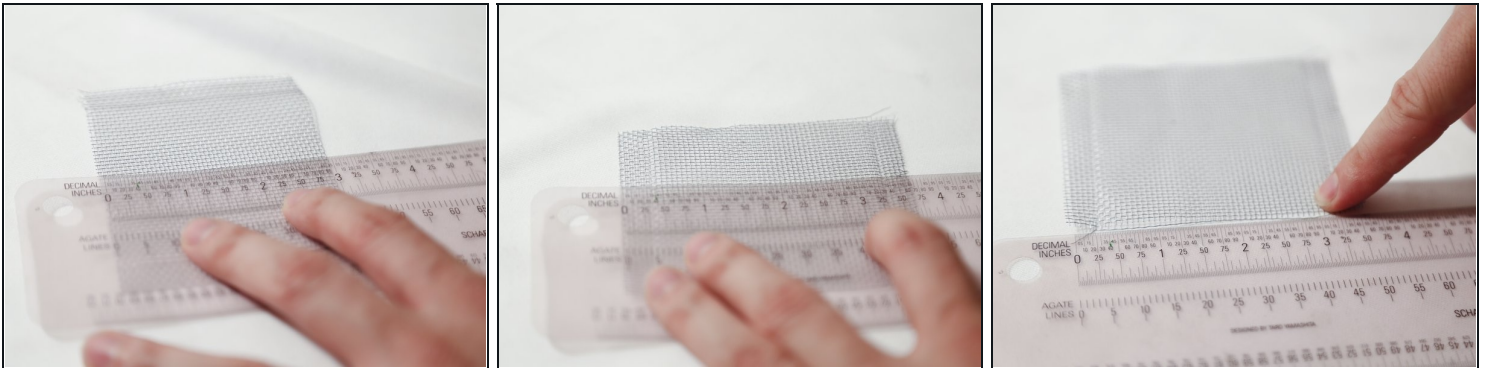
- Remove the screen from the window frame and place it in your work space.
- ① Removing the screen is not necessary but will make the fix easier. You can easily work through this fix with the screen on the frame as long as you can reach the tear from both sides of the screen.

Step 2



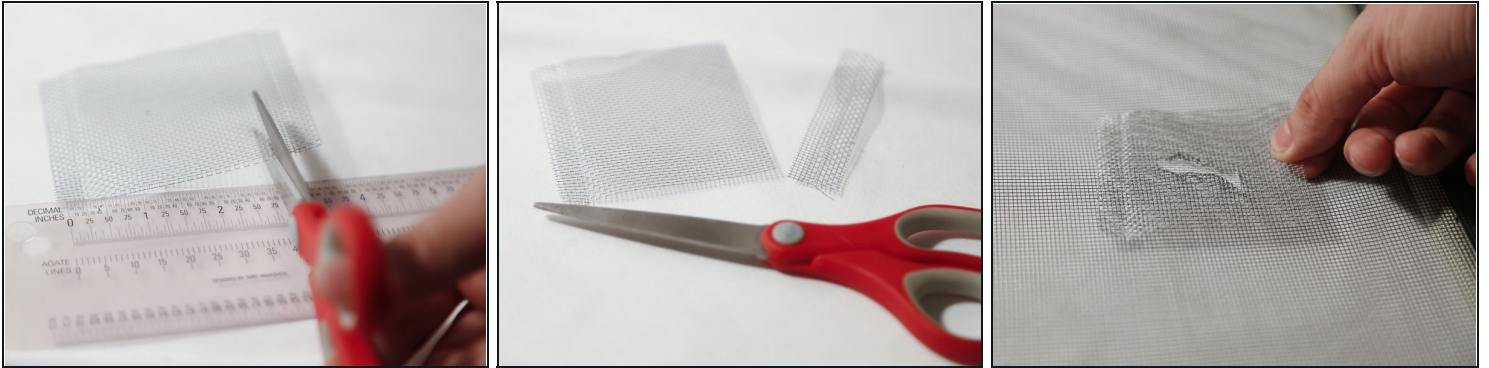
- From where the tear ends, measure one inch from the left, right, bottom, and top of the tear.
 - ① Make note of these measurements as they will be the required size of your patch.

Step 3



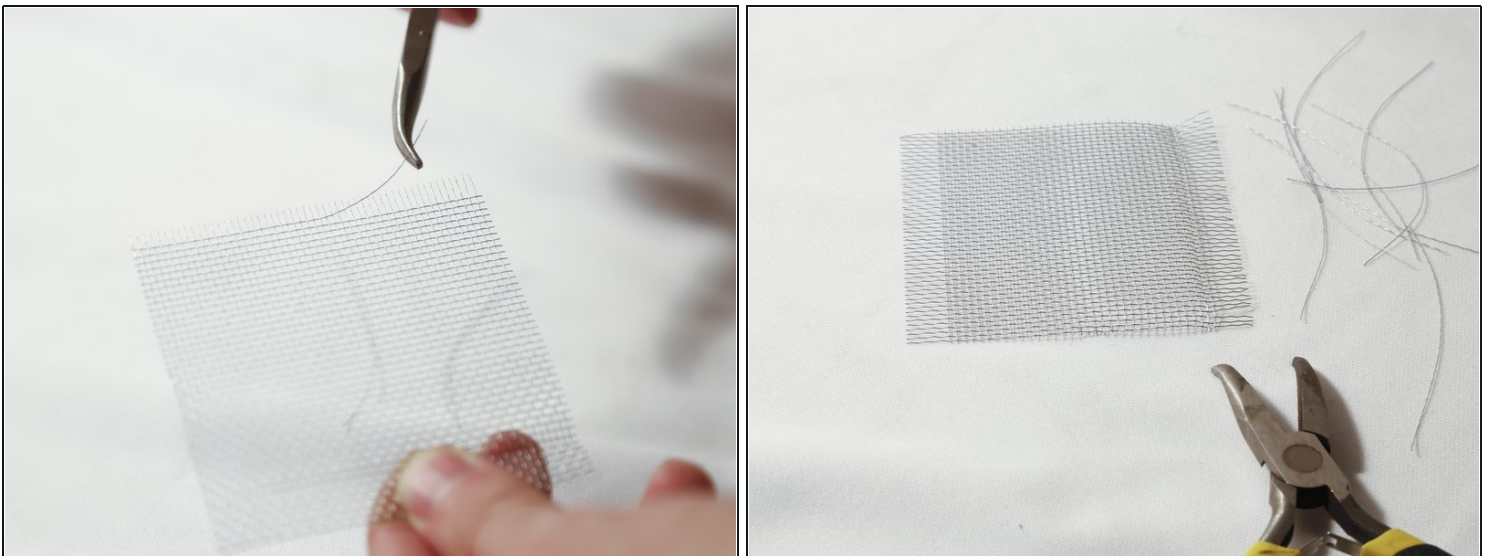
- Measure your patch using the dimensions determined in step 2.
- If the patch is larger than said dimensions, mark where you will cut it.

Step 4



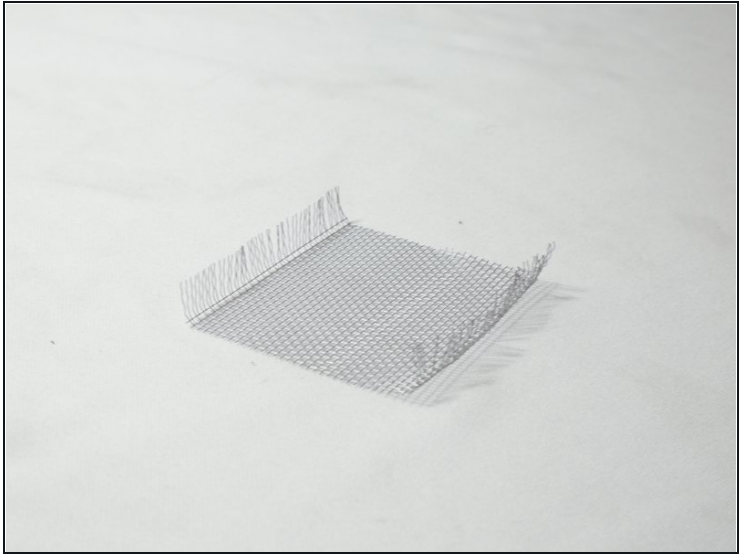
- Use scissors to cut the patch to size.
- Place your patch over the tear to confirm it extends one inch from every side.

Step 5



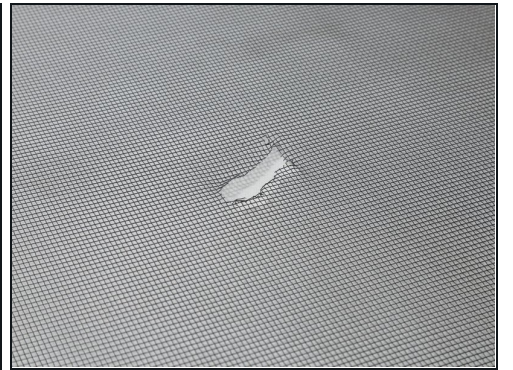
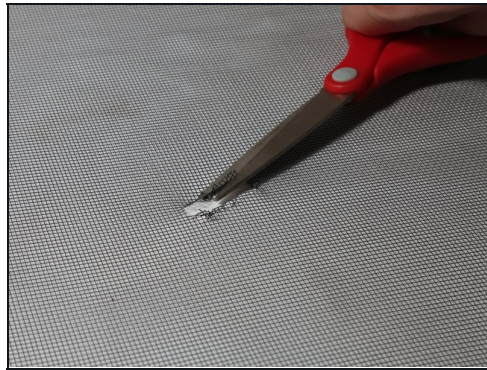
- Using the pliers or [tweezers](#), remove some threads from two opposite sides of the patch.
- Stop when approximately half an inch of threads are exposed on each side.

Step 6



- Bend the exposed threads 90 degrees on both sides of the patch.

Step 7



- Use scissors to cut away the frayed sections of the tear.

Step 8



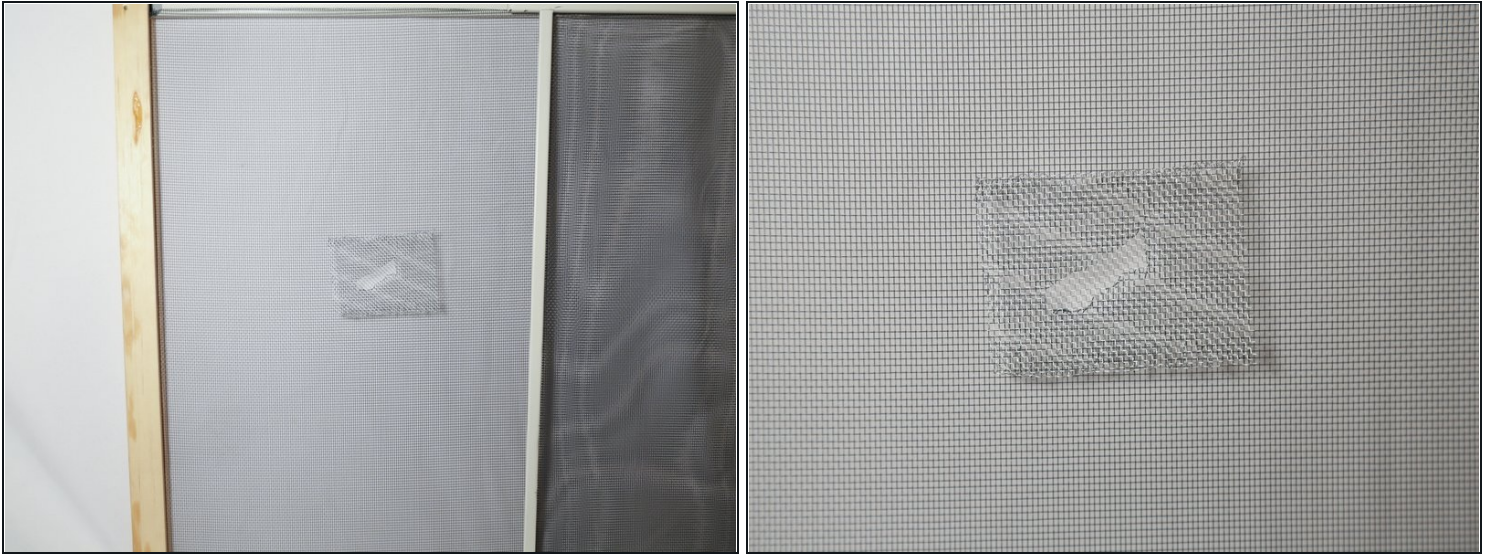
- Center the patch over the tear.
- Press the exposed patch threads through the screen.
 - ① Try to keep the wires as even as possible. This will make the patch look nicer in the end.

Step 9



- Gently, but firmly, bend the threads back in the direction of the tear to secure the patch.
 - ① If you are working with a screen still on its frame, place one hand on the side with the patch, while using the other to bend the threads on the other side. This will ensure you do not break your screen by pushing only from one side.
- Do this for both sides, making sure the patch does not move around when both sides have been bent.

Step 10



- Check that the patch is secure and covers the tear well.
- If the screen was removed from the frame, reinsert the screen back on the frame.

Your window screen is now patched. Feel free to once again open your window and let the breeze in without any pesky bugs or debris flying through the tear!