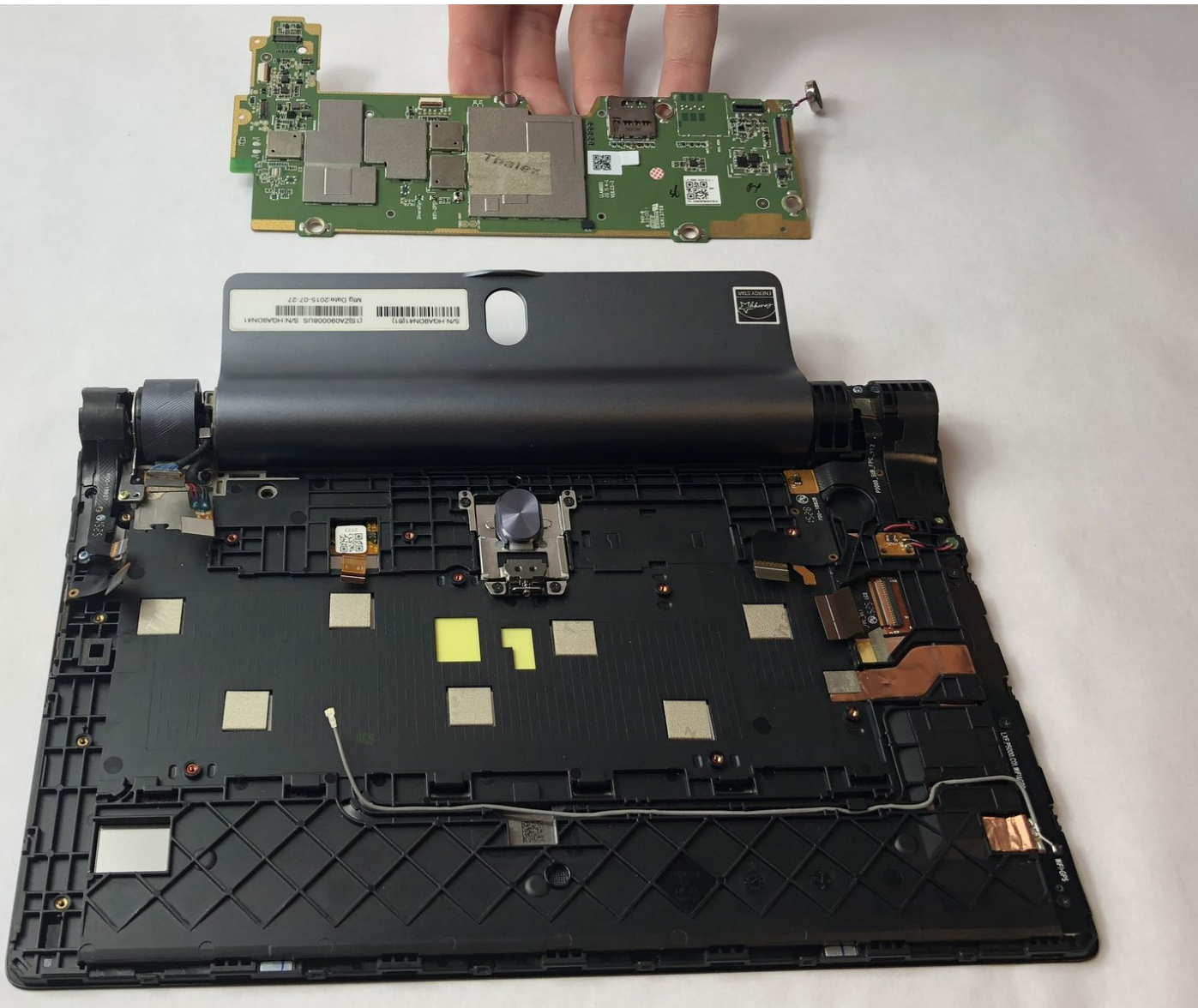




Lenovo Yoga Tab 3 8 Motherboard Replacement

Removal of the motherboard in the Lenovo Yoga Tab 3 8 for replacement.

Written By: Nicklaus Krems



INTRODUCTION

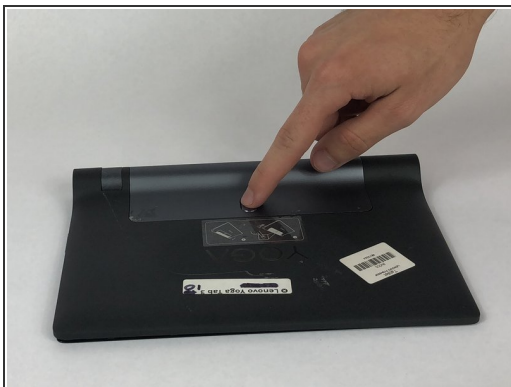
If you are following this guide, that means your Motherboard is causing you issues on your Lenovo Yoga Tab 3 8. Before starting to work on your device, it is advised to back up any important files just in case something happens. You will want to make sure you have the device powered off to prevent harming yourself or damaging your hardware. To make reassembly easier, be sure to avoid misplacing the small screws by keeping track of them as you go.



TOOLS:

- [Tweezers](#) (1)
 - [Phillips #00 Screwdriver](#) (1)
 - [iFixit Opening Tools](#) (1)
 - [JIS #00 Screwdriver](#) (1)
-

Step 1 — Back Cover



- Open the kickstand by pressing the release button in the center.
- Remove the identification sticker with a pair of tweezers to allow access to the two 2mm screws underneath.

Step 2



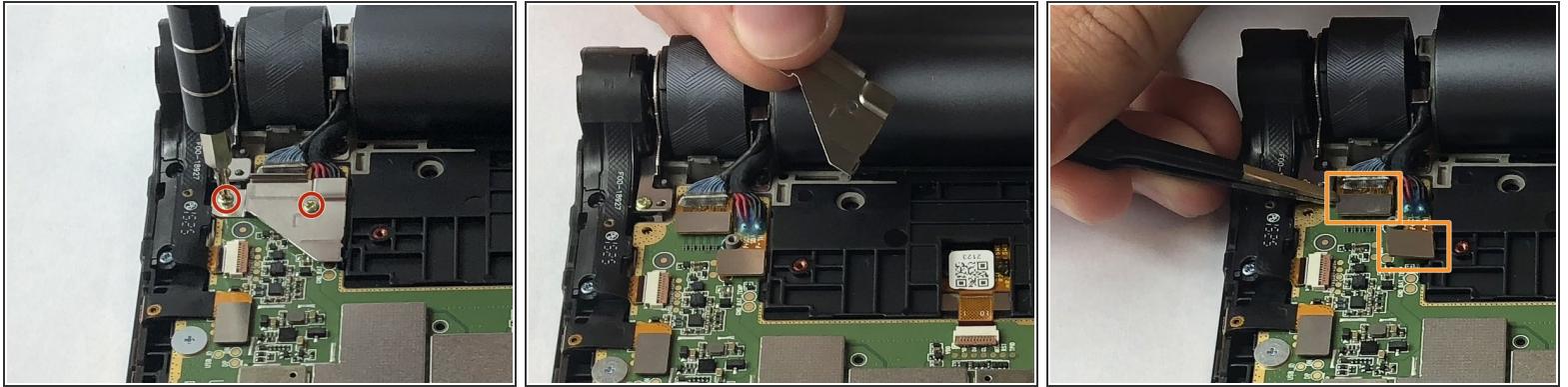
- Remove the three 2mm screws under the kickstand with a PH00 screwdriver.
- ⓘ The third 2mm screw to the right may have an S sticker covering it which you can scrape off.

Step 3



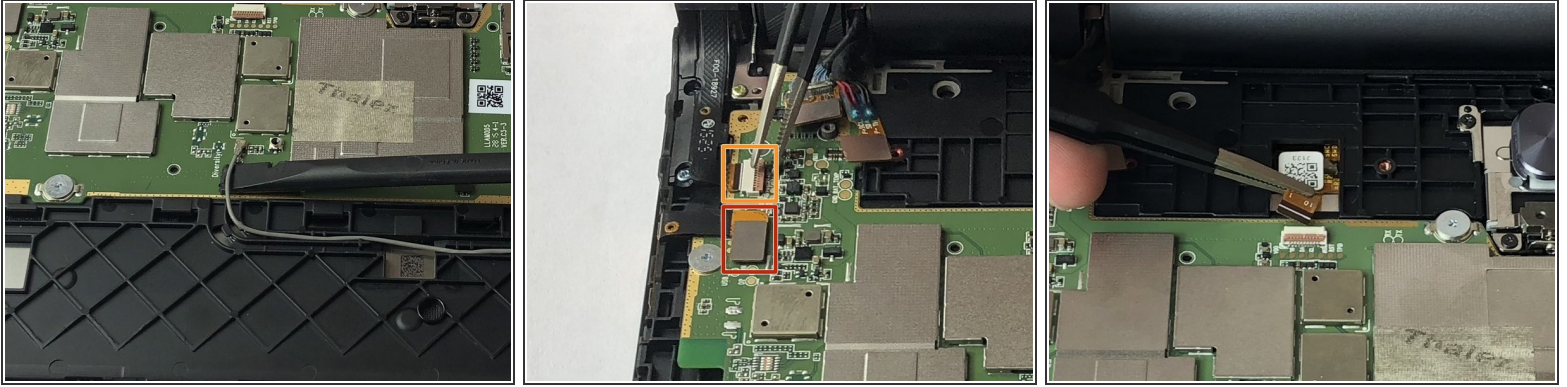
- Starting along the edge opposite of the hinge, insert a plastic opening tool between the screen and the backing to begin separating the small clips holding the backing on.
- Work along the edge and then up the sides, separating the clips with the plastic opening tool.
- ⓘ There is adhesive underneath the slot for the SD card so you will need to slowly apply some force to break the adhesive.
- ⚠ As the back is separated from the device, be careful to not lose the power button. It may come loose and fall out.

Step 4 — Motherboard



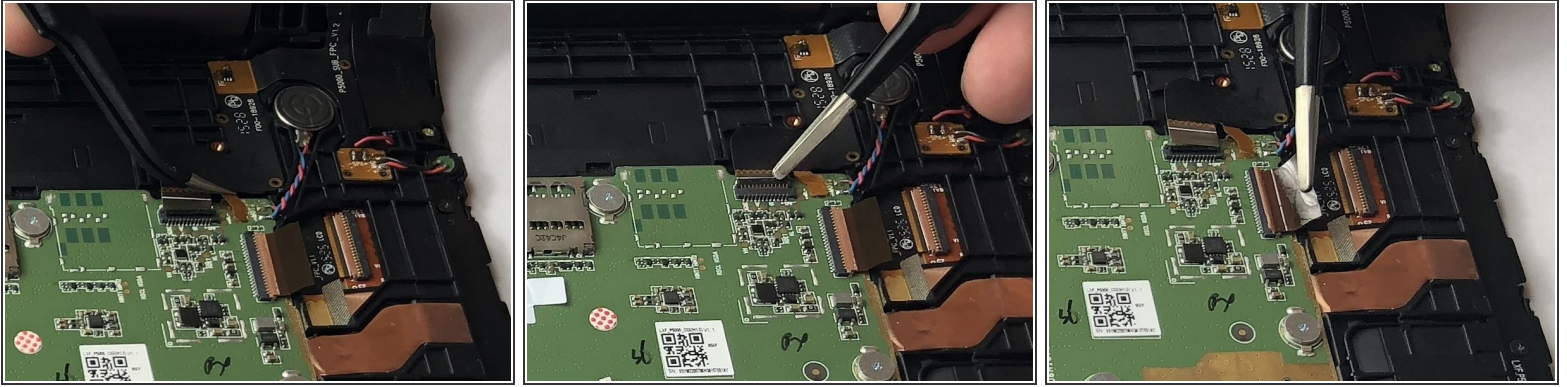
- With the device oriented screen side down and hinge opposite of you, locate the silver metal bracket on the top left covering the battery and camera connections. Remove the two 3mm screws with a PH00 screwdriver.
- Remove the bracket with your fingers to reveal the two silver battery and camera connections underneath.
- Gently lift the connections off using tweezers.

Step 5



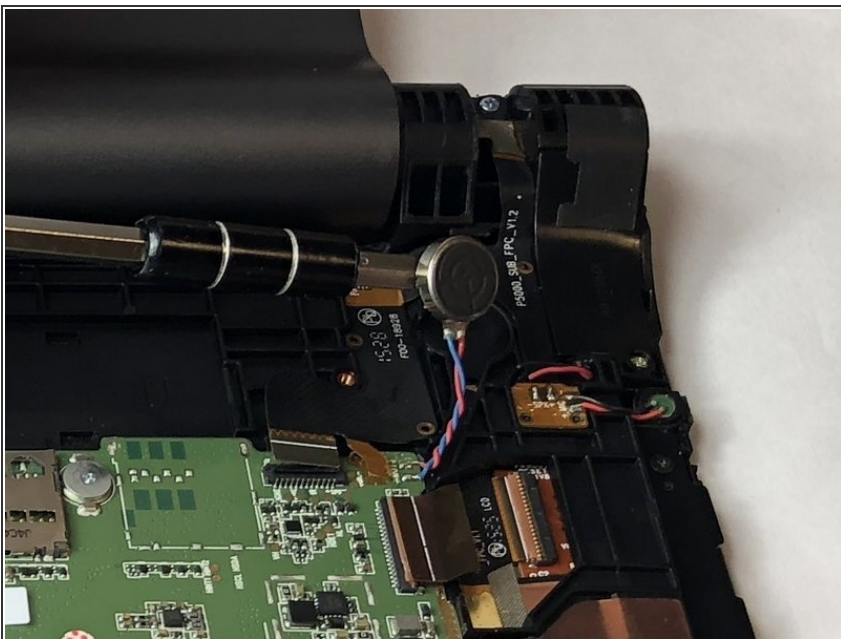
- Locate the WiFi module connection on the motherboard by following the grey wire along the bottom. Use a spudger to gently pry it off.
- Locate the volume control connector on the left side of the motherboard. Gently lift the silver connector off with a pair of tweezers.
- Continuing up the left side of the motherboard, locate the white power button connector. Disengage the beige lock on the top of the connector by flipping it up with a pair of tweezers. Gently pull the wire from the connector using the tweezers.
- Continuing along the top of the motherboard, disconnect the white LCD connection by disengaging the beige lock and pulling the wire out with tweezers.

Step 6



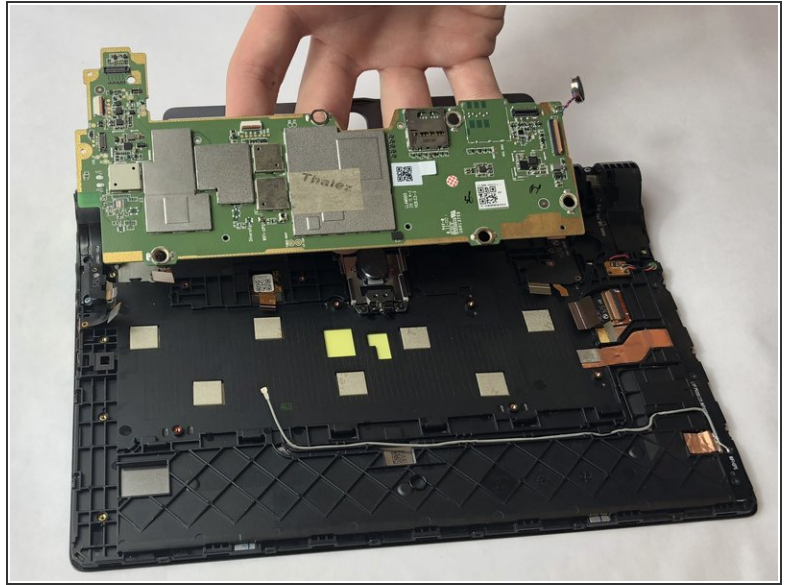
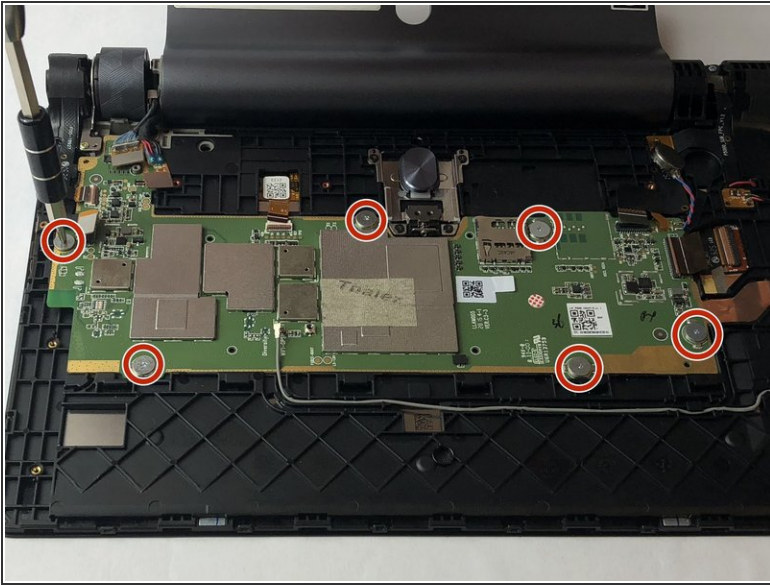
- Continuing to the right along the top of the motherboard, the next wire connects to the motherboard in two places. First, gently lift pry off the gold connector on the right with a pair of tweezers, then use the tweezers to disengage the brown lock on the black connector to the left. Use the tweezers to gently pull out the wire.
- The final black connector is located on the right side of the motherboard. Disengage the brown lock and pull out the wire with tweezers.

Step 7



- Locate the blue and red coiled wire coming from the top right of the motherboard and follow it to the round metal component. Gently pry out the component with a metal spudger. It is held down by some adhesive.
- ❗ A flat head screw driver was used in the picture but you should use a metal spudger if possible.

Step 8



- Remove the six 2mm screws holding down the motherboard using a JIS00 screwdriver.
- Lift out the motherboard with your fingers.

To reassemble your device, follow these instructions in reverse order.