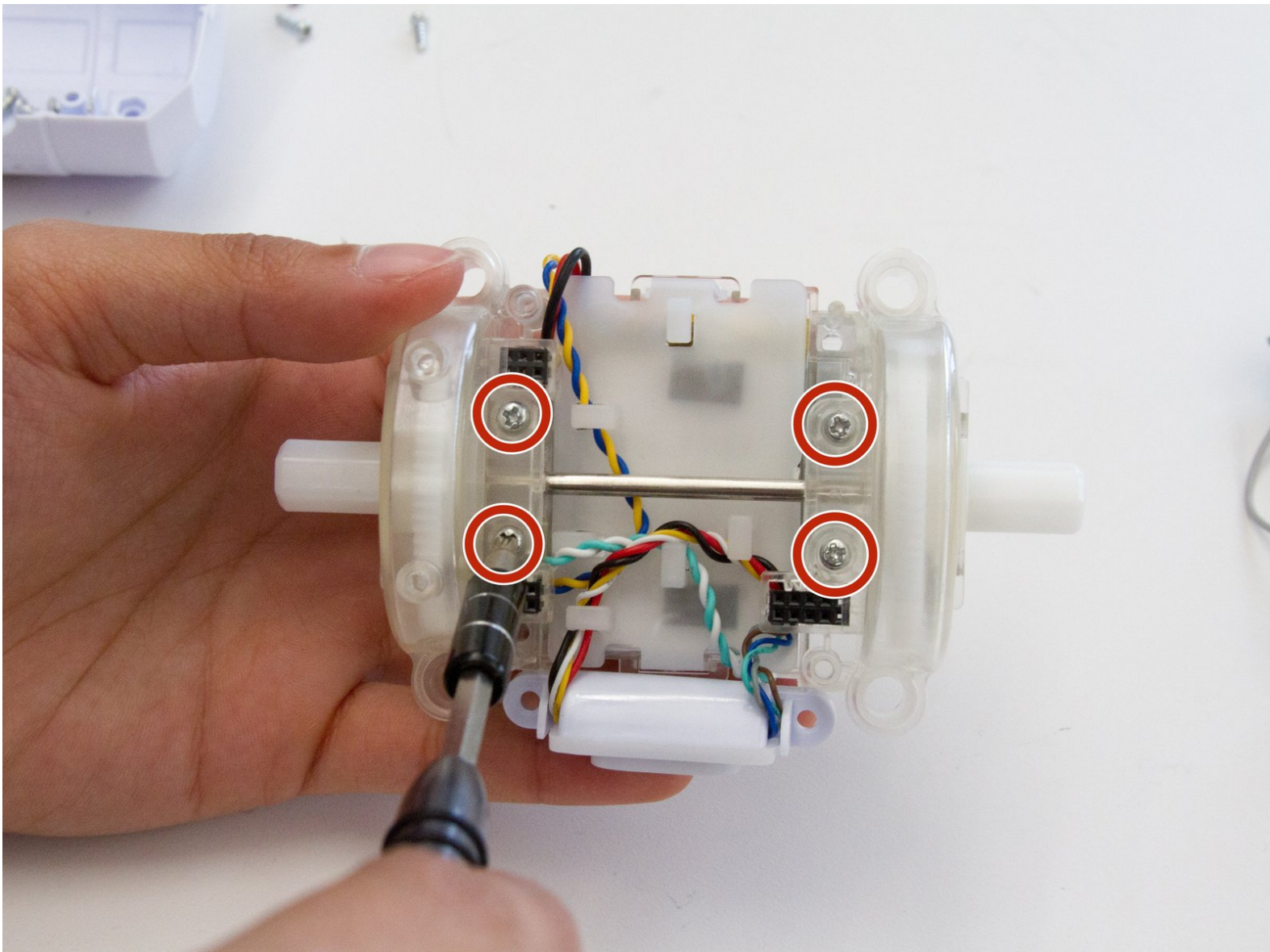




Sphero Ollie Battery Replacement

Replace your Ollie's battery if it is dying too fast, if it doesn't charge, or charges slowly.

Written By: Krystal Hedrick



INTRODUCTION

The battery is like the heart of the Sphere Ollie. Without the battery, the Ollie will be useless and inactive. To replace your battery, you will need a Blue Opening Tool and Phillip's Head Screwdriver to gain access to it.

TOOLS:

- [iFixit Opening Tools](#) (1)
 - [Phillips #1 Screwdriver](#) (1)
-

Step 1 — Tires and Hubcaps



- Firmly grasp Ollie in one hand.
- Remove the blue rubber tire in a peeling motion with your opposite hand.

Step 2



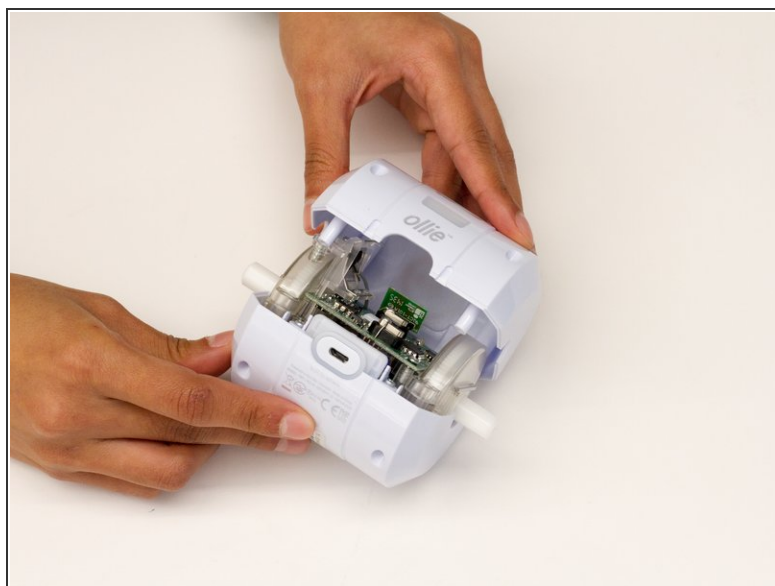
- Continue to firmly hold Ollie in one hand.
- Use a Plastic Opening Tool to gently pry off the hubcap.
- ⓘ Avoid inserting the Plastic Opening Tool into the empty holes, but instead use the tool near the tabs holding the hubcap in.
- ⚠ Do not aim the hubcap towards another person as it may pop off with force.

Step 3 — Motherboard



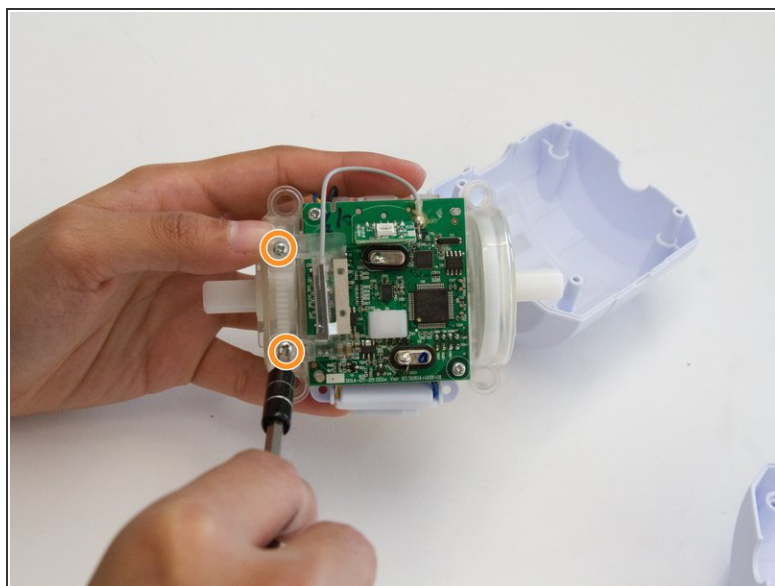
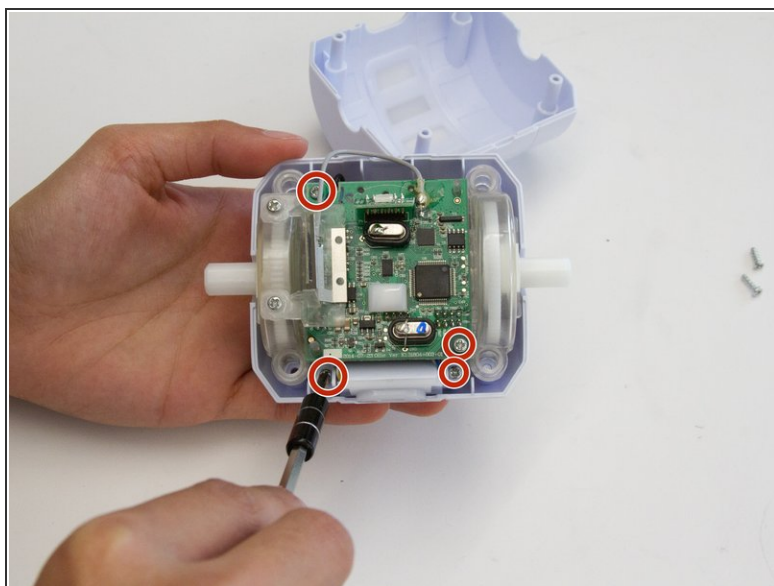
- Loosen and remove the 10mm screw on each side of the device using a JIS 1 screwdriver tip.
- Remove the plastic tire frame from the device

Step 4



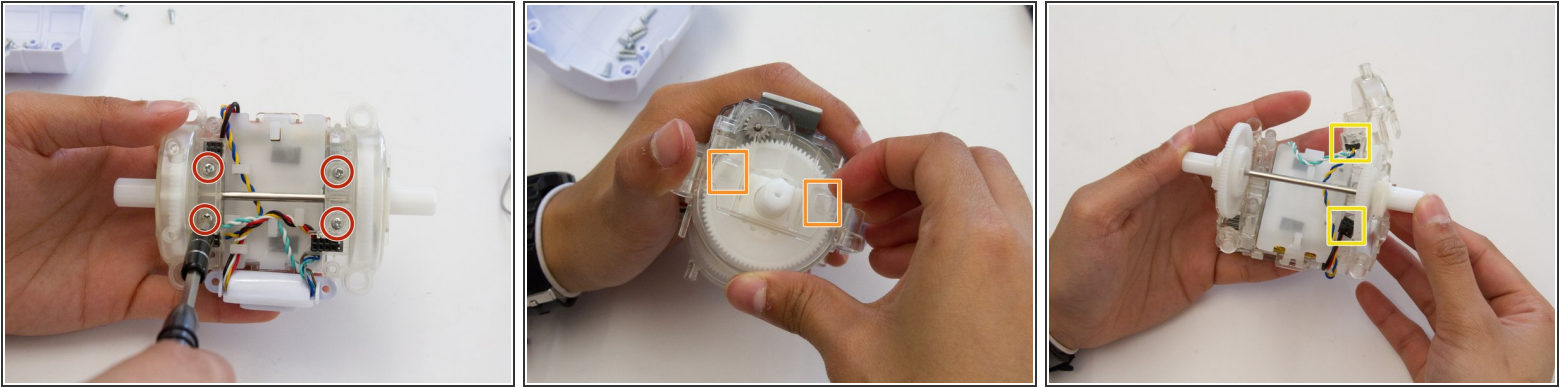
- Loosen and remove the four 10mm Screws on the underside of the device using a JIS 1 tip.
- Firmly grasp the bottom of the device and pull the top half of the outer case off of the bottom.

Step 5



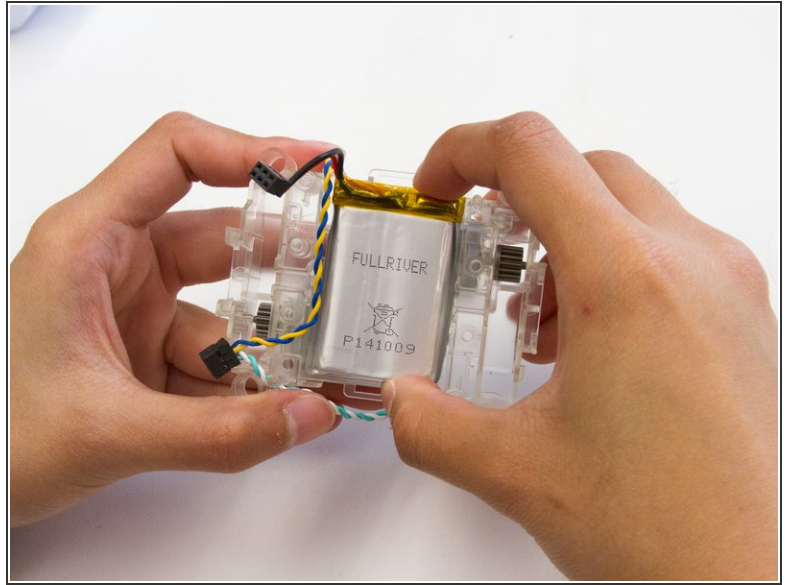
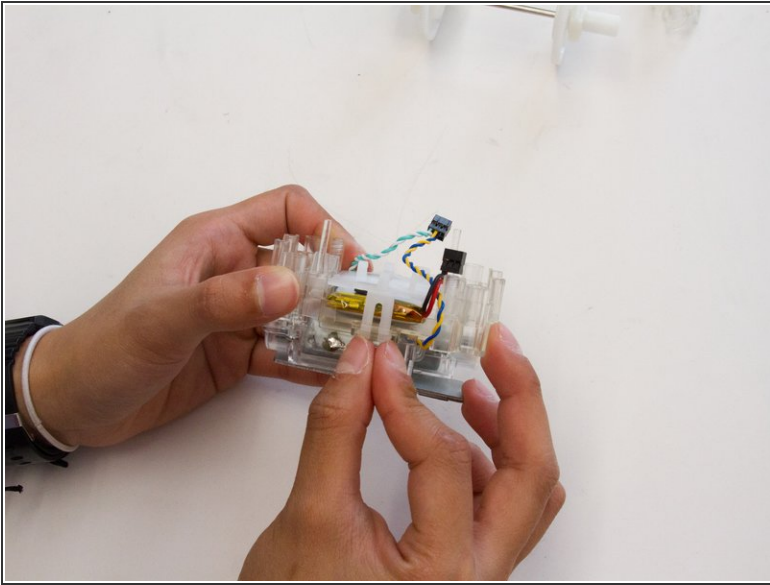
- Loosen and remove the 10mm screws holding the blue tooth connector as well as the two 1 10 screws holding the motherboard to the case using the JIS #1 screwdriver
- Loosen and remove the 10mm screws holding the antenna to the case.
- Gently remove mother board from the case with an upward motion.

Step 6 — Battery



- After you have removed the motherboard, use a JIS #1 screwdriver to remove the **four** 10mm Screws holding in the cog shields.
- Next, you want to pull apart the clips (**two on each side**) holding the top piece of the shield to the frame.
- Then, once you have freed the cogs, you can lift the cog and remove it from the frame.
- ⓘ To completely remove the cog shield out of the way, carefully remove the black pin connectors from the slot in the shield.

Step 7



- Once you have removed the cog out of the way, you can then pinch the clip to access the battery.
- To remove the battery, simply pull on it with slight force as it is held tight by adhesives.

To reassemble your device, follow these instructions in reverse order.