



# Toshiba Satellite S50-B Battery Replacement

How to replace the battery of the Toshiba Satellite S50-B.

Written By: Avery Williams



---

## INTRODUCTION

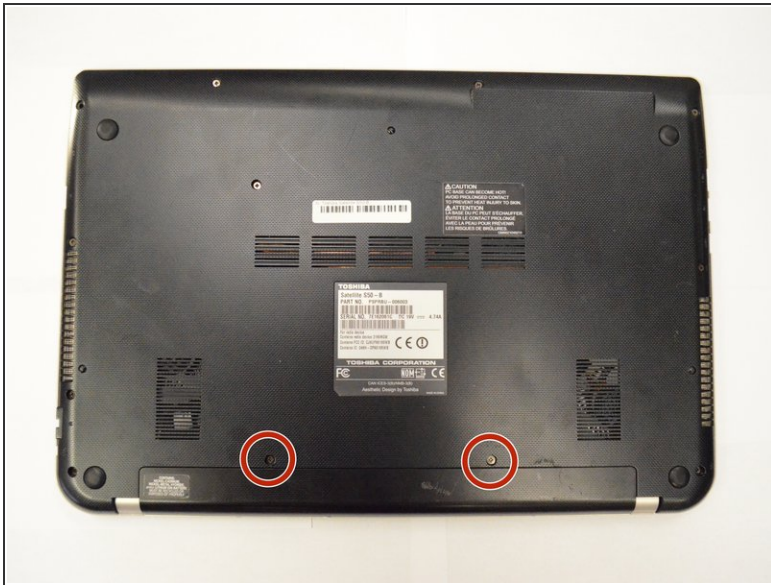
This guide will demonstrate how to replace the battery on the Toshiba Satellite S50-B laptop. The only tool that is necessary is a Phillips #0 Screwdriver.

---

### TOOLS:

- [Phillips #0 Screwdriver](#) (1)
-

## Step 1 — Battery



- i** Make sure you turn off the laptop first.
- Unscrew the two 6.5mm screws below the battery using a Phillips #0 Screwdriver.

## Step 2



- Place thumbs on corners of the battery. Pinch the battery between the thumb and index finger and pull.

To reassemble your device, follow these instructions in reverse order.